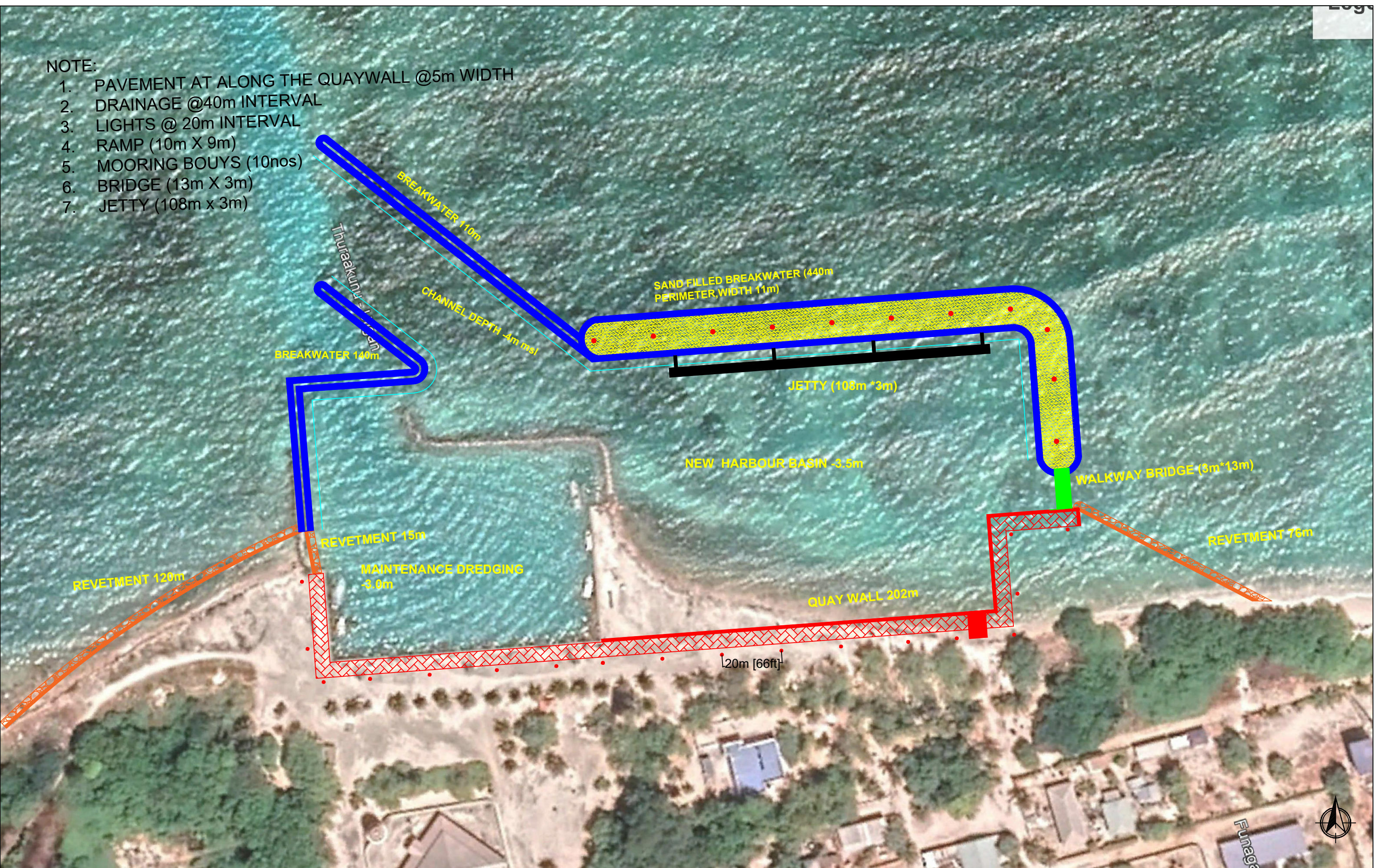


- NOTE:
- 1. PAVEMENT AT ALONG THE QUAYWALL @5m WIDTH
 - 2. DRAINAGE @40m INTERVAL
 - 3. LIGHTS @ 20m INTERVAL
 - 4. RAMP (10m X 9m)
 - 5. MOORING BOUYS (10nos)
 - 6. BRIDGE (13m X 3m)
 - 7. JETTY (108m x 3m)



HA.ULIGAN COUNCIL STAMP

LEGEND

	QUAY WALL		REVTMENT
	PAVEMENT		SAND FILLED BREAKWATER
	BREAKWATER		JETTY
	HARBOUR LIGHTS		

NOTES: FISHING VESSEL 7, SPEED BOAT 1, DINGHY 7

DRAWN BY IBRAHIM JALEEL
CHECKED BY FATHIMATH SHIMYA

SCALE 1 : 1100 PAPER SIZE A3

MINISTRY OF
NATIONAL
PLANNING AND
INFRASTRUCTURE

PROJECT TITLE
HA.ULIGAMU HARBOUR CONCEPT

DATE	DWG NO	REV
23/2/2020		1