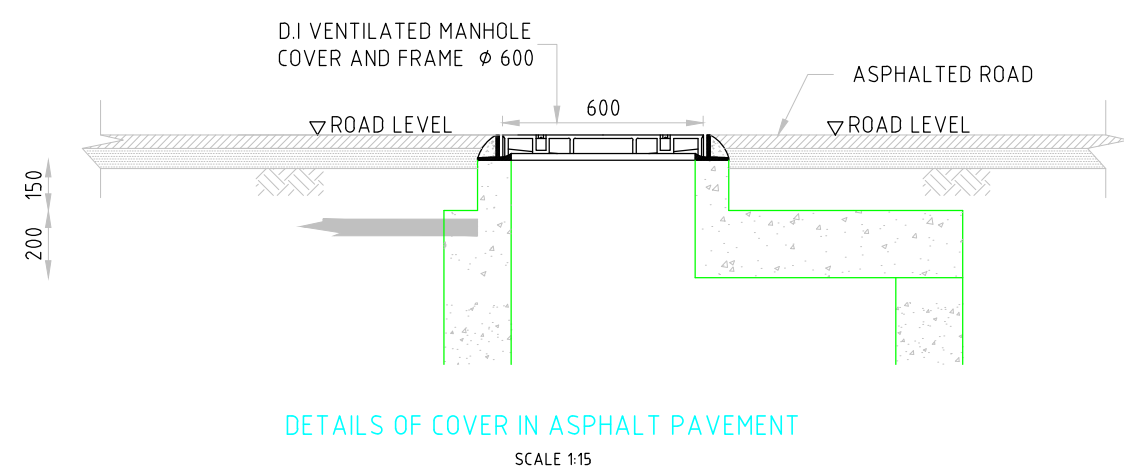
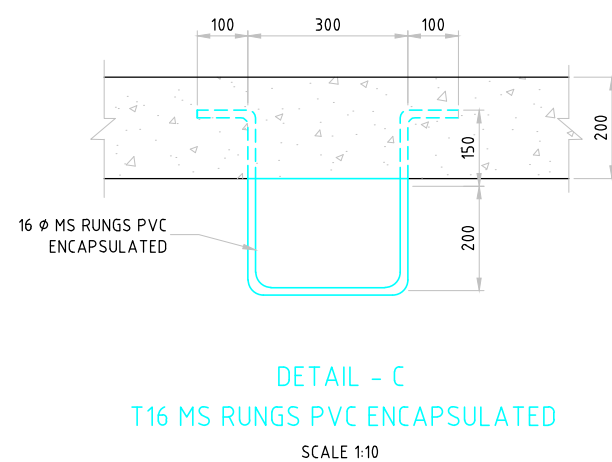
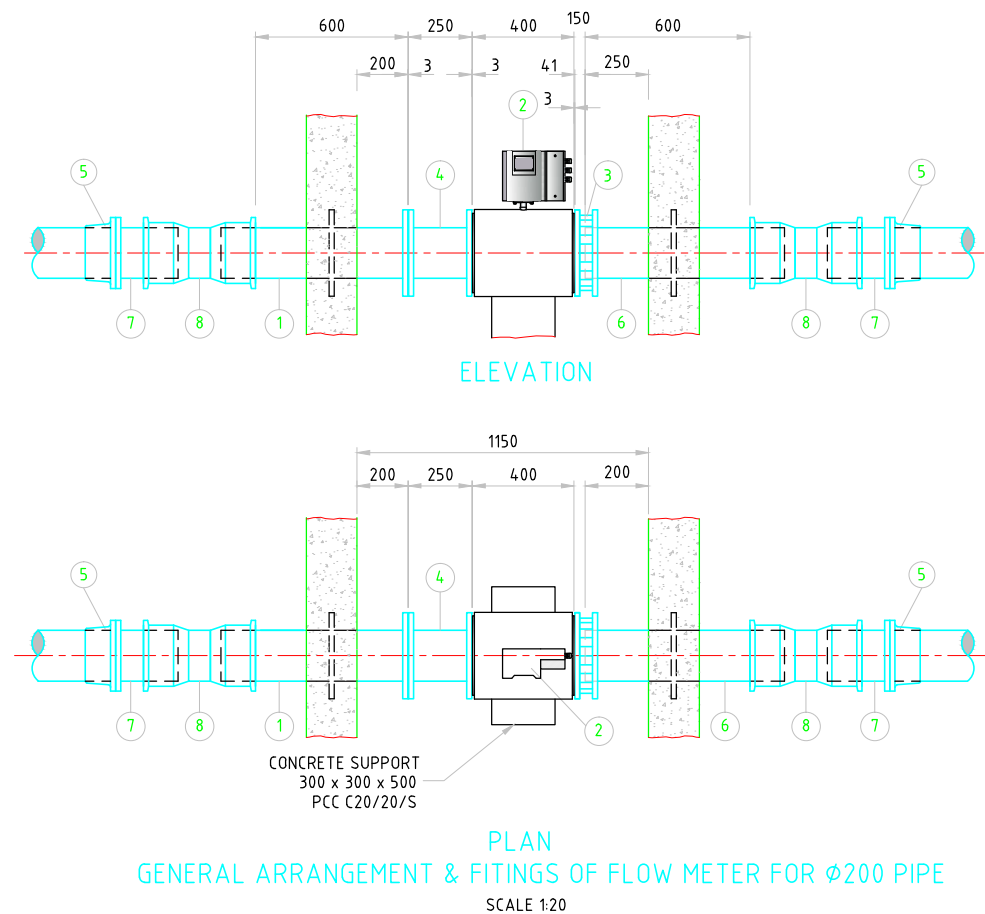
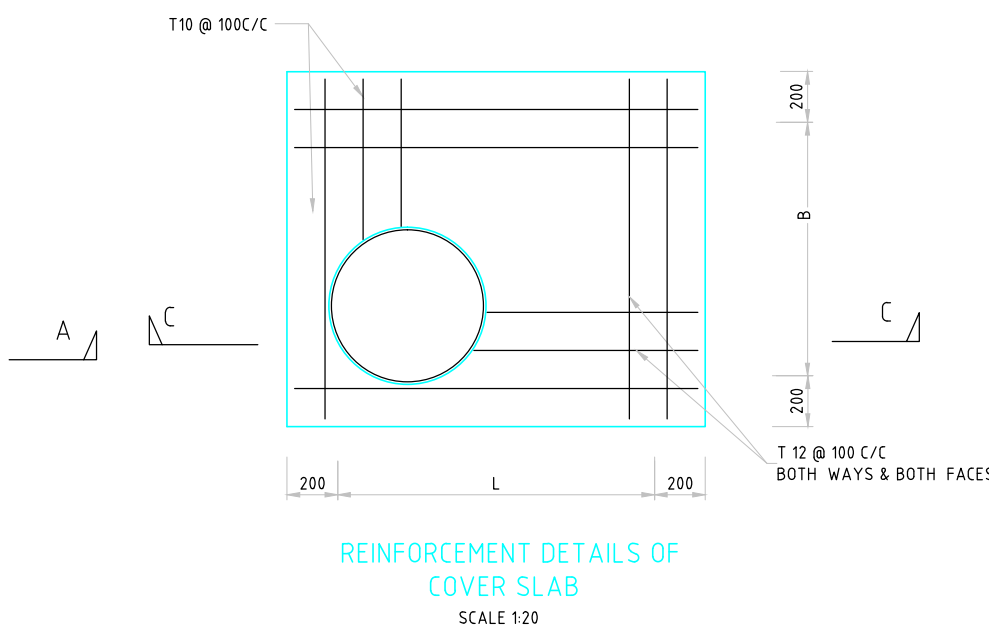


ITEM	SPECIALS AND FITTINGS	QTY
1	DI - SPIGOT PIPE WITH WELDED THRUST FLANGE	1
2	FLOW METER	1
3	FLANGED ADAPTOR	1
4	DI FLANGED-SPIGOT PIECE	1
5	DI/PE ADAPTOR	2
6	DI FLANGED SPIGOT PIPE WITH WELDED PUDDLE FLANGE	1
7	DI SHORT LENGTH FLANGED SPIGOT PIECE	2
8	DI COLLAR	2

Dia of Pipe (d)	L	B	a
80-200	1200	1200	250
250	1450	1250	425
300	1750	1300	650
350	2000	1350	875
400	2300	1400	1100
450	2500	1450	1325
500	2850	1500	1575




1. All dimensions are in mm
2. For location and depths of Gate valve chamber refer to drawings of pipeline plans and profiles
3. The specials and pipe fittings shall be selected to suit the supply pipe line
4. All the valves , specials and pipes inside the chamber should be of Ductile iron
5. Flow meter shall comply with BS 5150
6. DI pipe & Fitting shall comply with BS 4772
7. Building materials:-  
Description of building materials is as follows


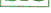
Compressive strength of concrete	$\uparrow$ C 30 / 20 / S	$\uparrow$ Sulphate resistant cement
	$\uparrow$ maximum size of aggregate	

8. Concrete:
  - a. mixes shall comply with BS 8110
  - b. minimum 28 day characteristic strength in accordance with BS 8110
9. Cover to reinforcement to be 50mm,
10. The steel used shall be of fy 350 grade.
11. The tanking shall be with two layers of Bituminous Pave for external surfaces of Valve chamber
12. Gate Valve Chamber to be provided for Pipe dia 200 to 300 mm
13. MH Cover Should Comply to BS EN 124 (Class D400)

PIL - PIPE INVERT LEVEL.  
MS - MILD STEEL.  
DI - DUCTILE IRON.  
PE - POLY ETHYLENE  
RCC -REINFORCED CEMENT CONCRETE  
PCC - PLAIN CEMENT CONCRETE

No.	DATE	DESCRIPTION	DRG. No.	DESCRIPTION
REVISION			REFERENCE DRAWINGS	

	<b>MINISTRY OF ENVIRONMENT AND ENERGY</b> MALE, REPUBLIC OF MALDIVES
	<b>CONSULTANCY SERVICES FOR SURVEY, DESIGN OF WATER SUPPLY FACILITIES          IN THE ISLAND HDH. NOLHIVARANFARU, MALDIVES</b>
<b>TITLE</b>	<b>TYPICAL DRAWING OF BULK FLOW METER CHAMBER</b>

		SHAH TECHNICAL CONSULTANTS PVT. LTD., INDIA			
		In Association With DEVELOPMENT TECHNOLOGIES MALDIVES, MALDIVES			
APPROVED		CHECKED		DESIGNED	DRAWN
SSS		SSS		RKC	SSN
SCALE	DATE	DRAWING No.			REVISION
AS SHOWN	NOV 2017	HDh.Nolhivaranfaru/WS/07			0