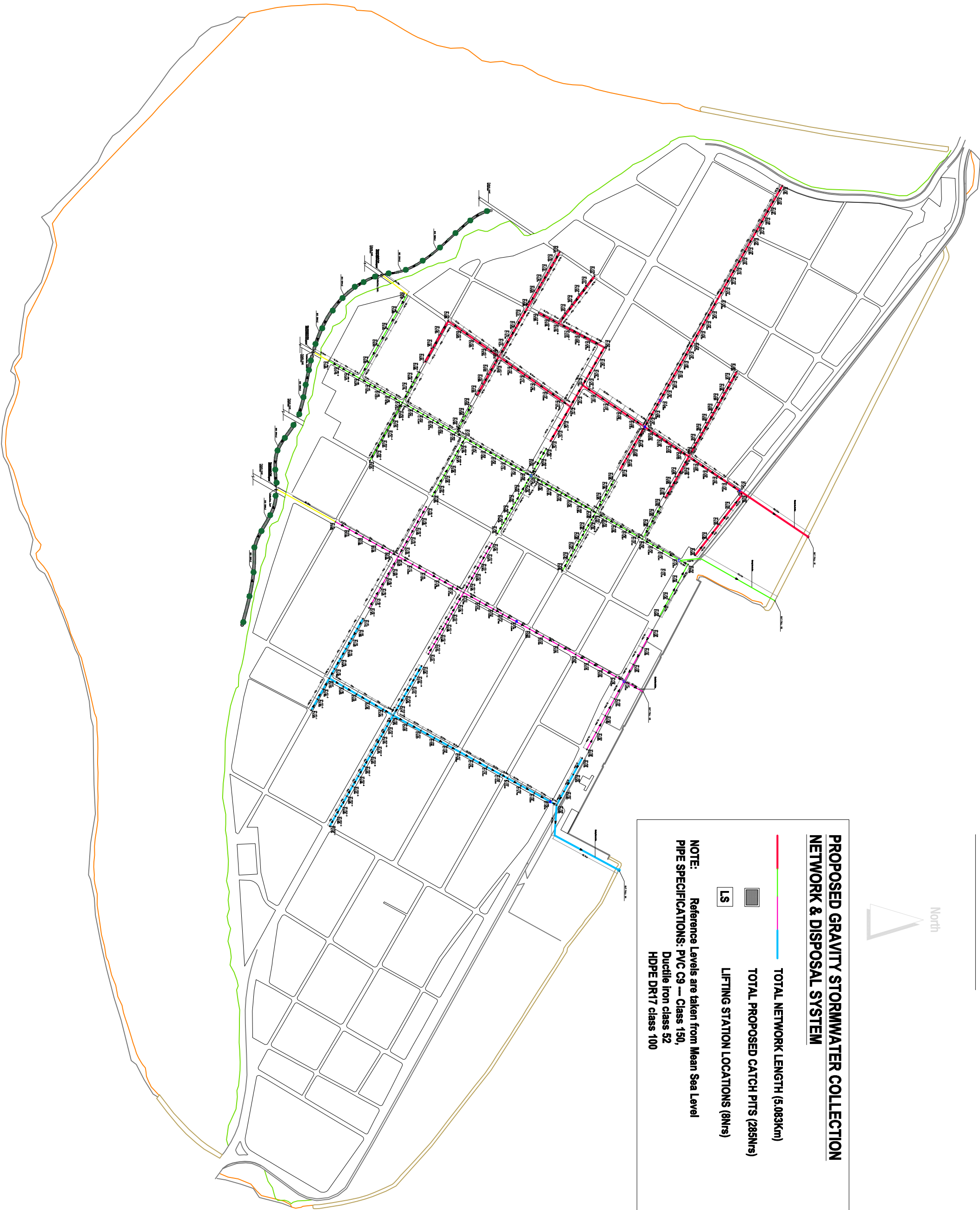
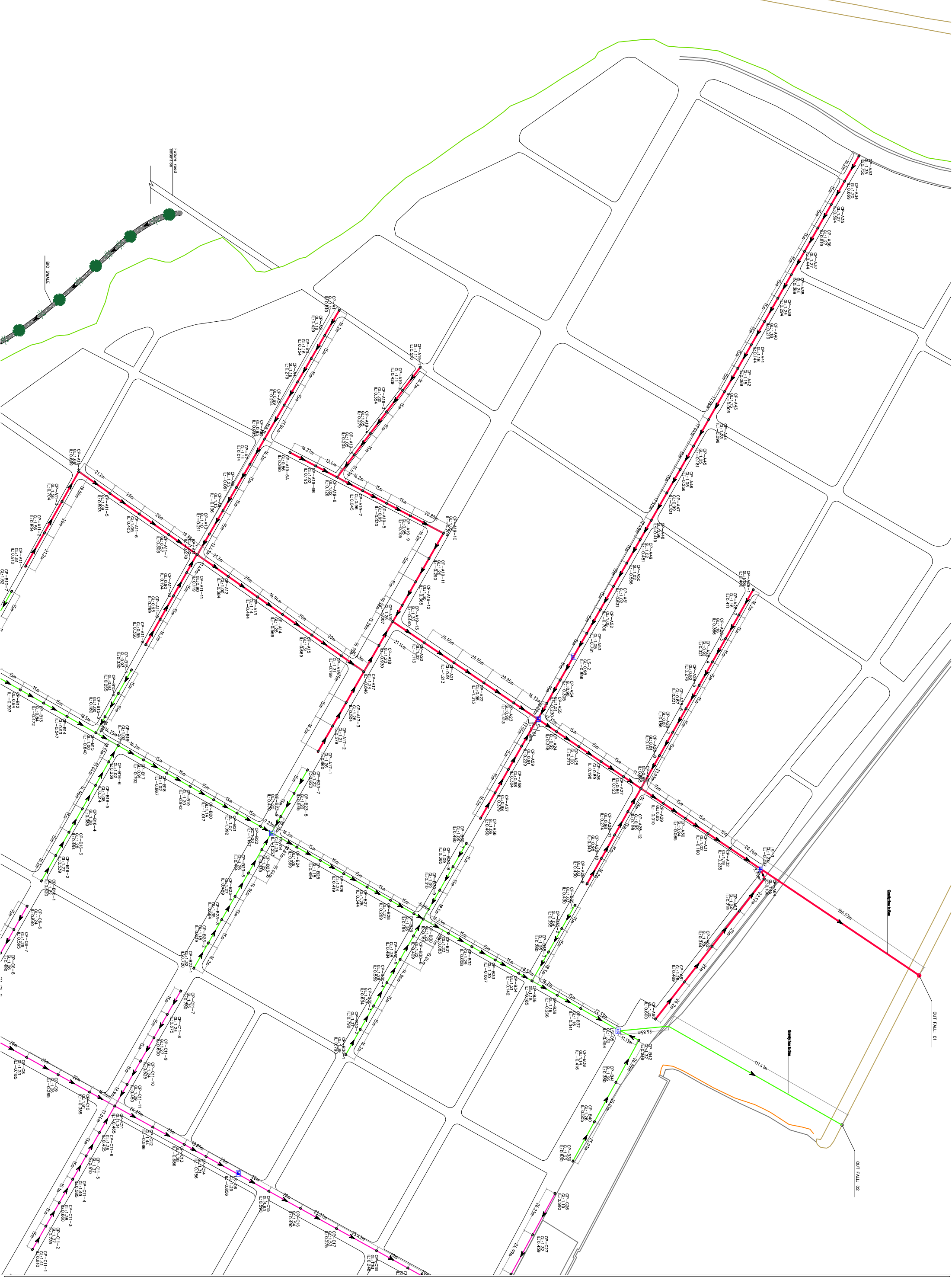


# S.FEYDHOO

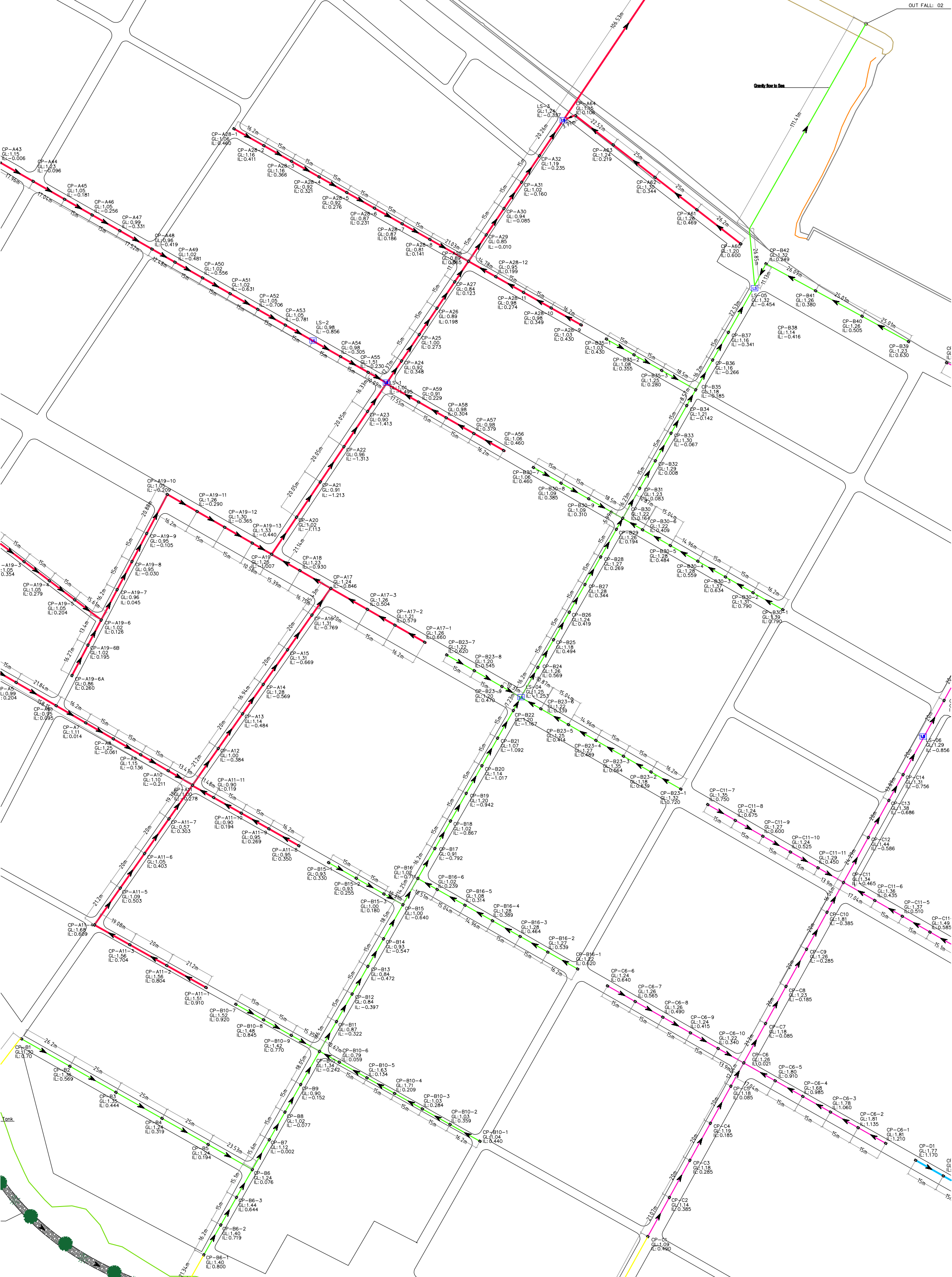


PROJECT : S.FEYDHOO STORMWATER DRAINAGE SYSTEM	TITLE : NETWORK DRAWING	DRAWN BY: DESIGNED BY:	WATER SOLUTIONS PVT. LTD WATER SOLUTIONS PVT. LTD	DATE SCALE AS GIVEN PROJECT No	DECEMBER 2017	PAGE NO. 1
	CLIENT : MINISTRY OF ENVIRONMENT & ENERGY			IF IN DOUBT - ASK - DO NOT SCALE		

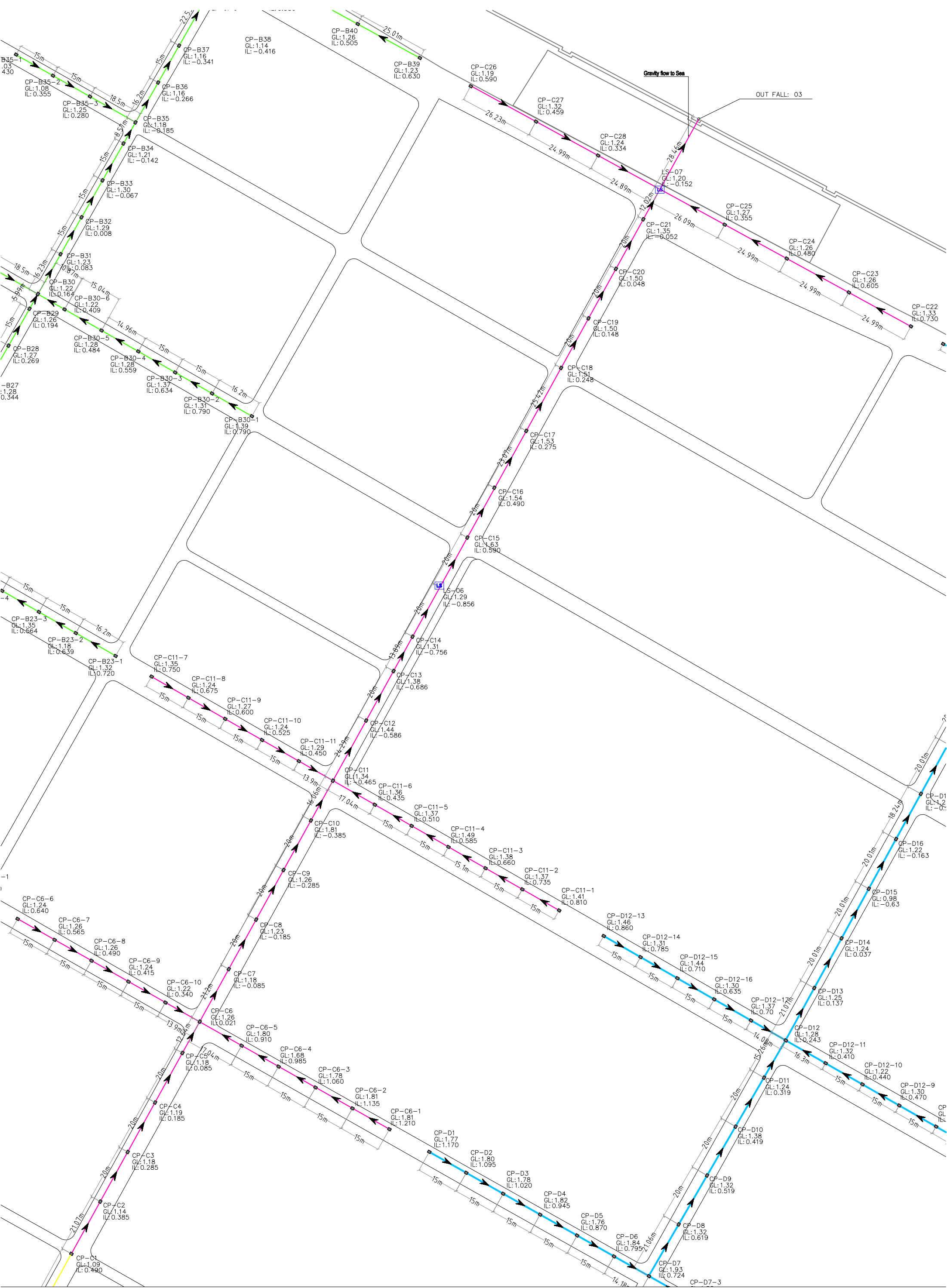


PROJECT : S.FEYDHOO STORMWATER DRAINAGE SYSTEM	TITLE :	DRAWN BY:	WATER SOLUTIONS PVT. LTD	DATE	DECEMBER 2017	PAGE NO.
	NETWORK DRAWING			SCALE AS GIVEN		
	CLIENT :			PROJECT No		
	MINISTRY OF ENVIRONMENT & ENERGY		IF IN DOUBT - ASK - DO NOT SCALE			2

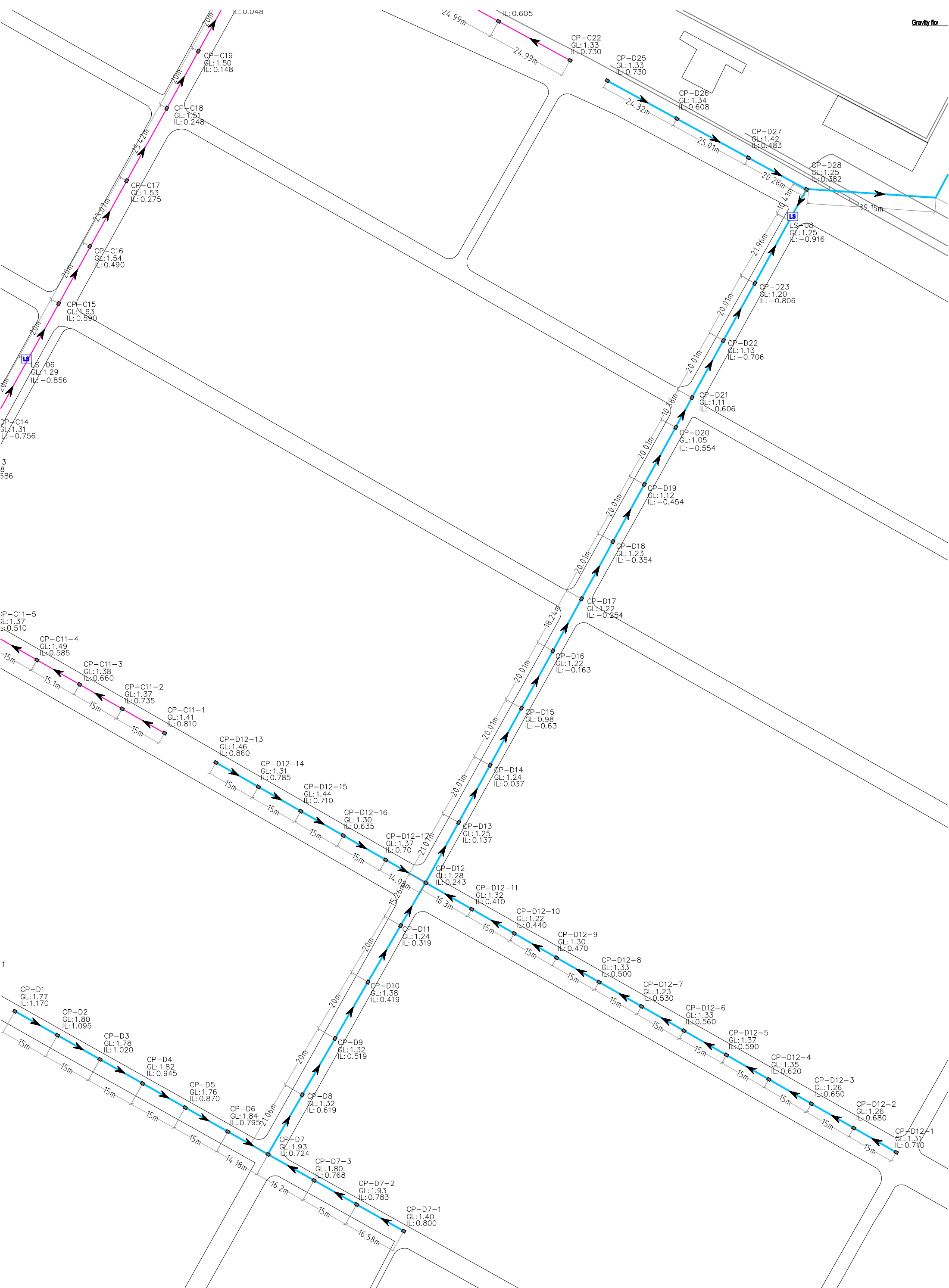




PROJECT : <u>S.FEYDHOO STORMWATER DRAINAGE SYSTEM</u>	TITLE :	DRAWN BY: DESIGNED BY:	WATER SOLUTIONS PVT. LTD	DATE	DECEMBER 2017	PAGE NO.  3	
	CLIENT :		WATER SOLUTIONS PVT. LTD	SCALE AS GIVEN			
			MINISTRY OF ENVIRONMENT & ENERGY		PROJECT No		
				IF IN DOUBT - ASK - DO NOT SCALE			



PROJECT : <u>S.FEYDHOO STORMWATER DRAINAGE SYSTEM</u>	TITLE :	DRAWN BY:	WATER SOLUTIONS PVT. LTD	DATE	DECEMBER 2017	PAGE NO.
	NETWORK DRAWING	DESIGNED BY:	WATER SOLUTIONS PVT. LTD	SCALE AS GIVEN		
	CLIENT :			PROJECT No		
	MINISTRY OF ENVIRONMENT & ENERGY		IF IN DOUBT - ASK - DO NOT SCALE	SCALE		
						4



PROJECT : S.FEYDHOO STORMWATER DRAINAGE SYSTEM	TITLE :	DRAWN BY:	WATER SOLUTIONS PVT. LTD	DATE	DECEMBER 2017	PAGE NO.
	NETWORK DRAWING		WATER SOLUTIONS PVT. LTD	SCALE AS GIVEN		
	CLIENT :			PROJECT No		
	MINISTRY OF EMVRONMENT & ENERGY		IF IN DOUBT - ASK - DO NOT SCALE			





PROPOSED GRAVITY STORMWATER COLLECTION  
NETWORK & DISPOSAL SYSTEM

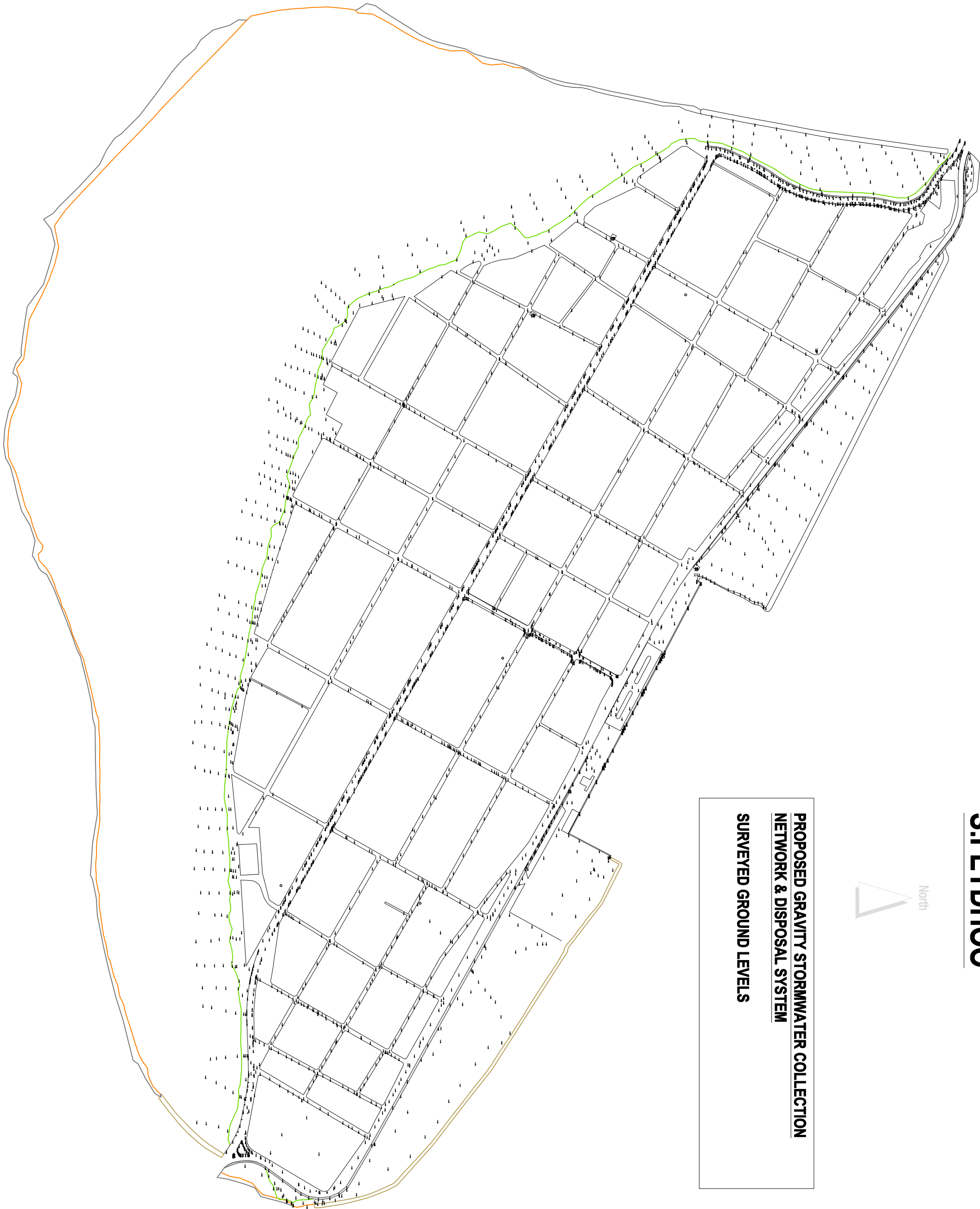
- Ø375mm PVC Pipes (1.127km)
- Ø300mm PVC Pipes (3.956km)



PROJECT : <u>S.FEYDHOO STORMWATER DRAINAGE SYSTEM</u>	TITLE : NETWORK DRAWING	DRAWN BY: DESIGNED BY:	WATER SOLUTIONS PVT. LTD WATER SOLUTIONS PVT. LTD	DATE SCALE AS GIVEN	DECEMBER 2017	PAGE NO.
	CLIENT : MINISTRY OF ENVIRONMENT & ENERGY			PROJECT No		6
			IF IN DOUBT - ASK - DO NOT	SCALE		



PROPOSED GRAVITY STORMWATER COLLECTION  
NETWORK & DISPOSAL SYSTEM  
SURVEYED GROUND LEVELS

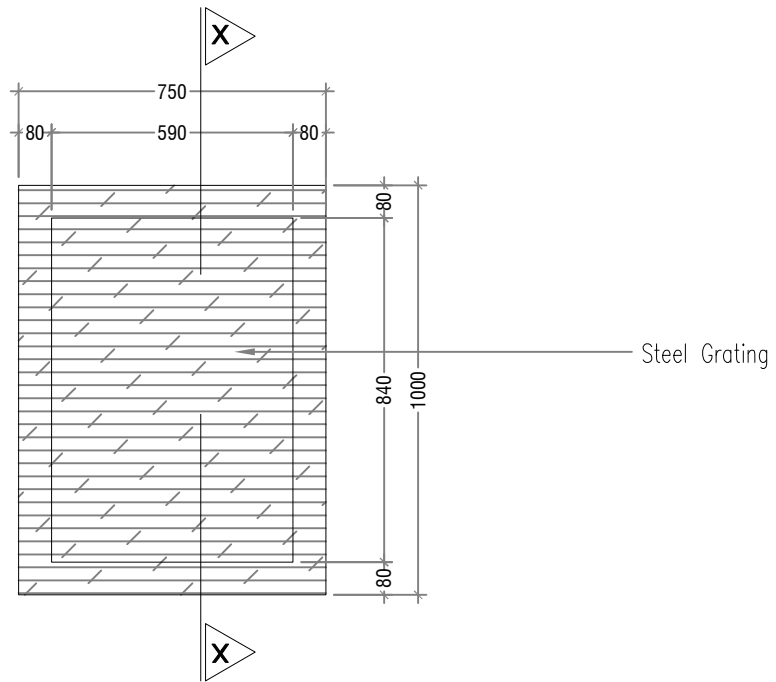


PROJECT : <u>S.FEYDHOO STORMWATER DRAINAGE SYSTEM</u>	TITLE : NETWORK DRAWING	DRAWN BY: DESIGNED BY:	WATER SOLUTIONS PVT. LTD WATER SOLUTIONS PVT. LTD	DATE SCALE AS GIVEN PROJECT No	DECEMBER 2017	PAGE NO.
	CLIENT : MINISTRY OF ENVIRONMENT & ENERGY					7
			IF IN DOUBT - ASK - DO NOT SCALE			



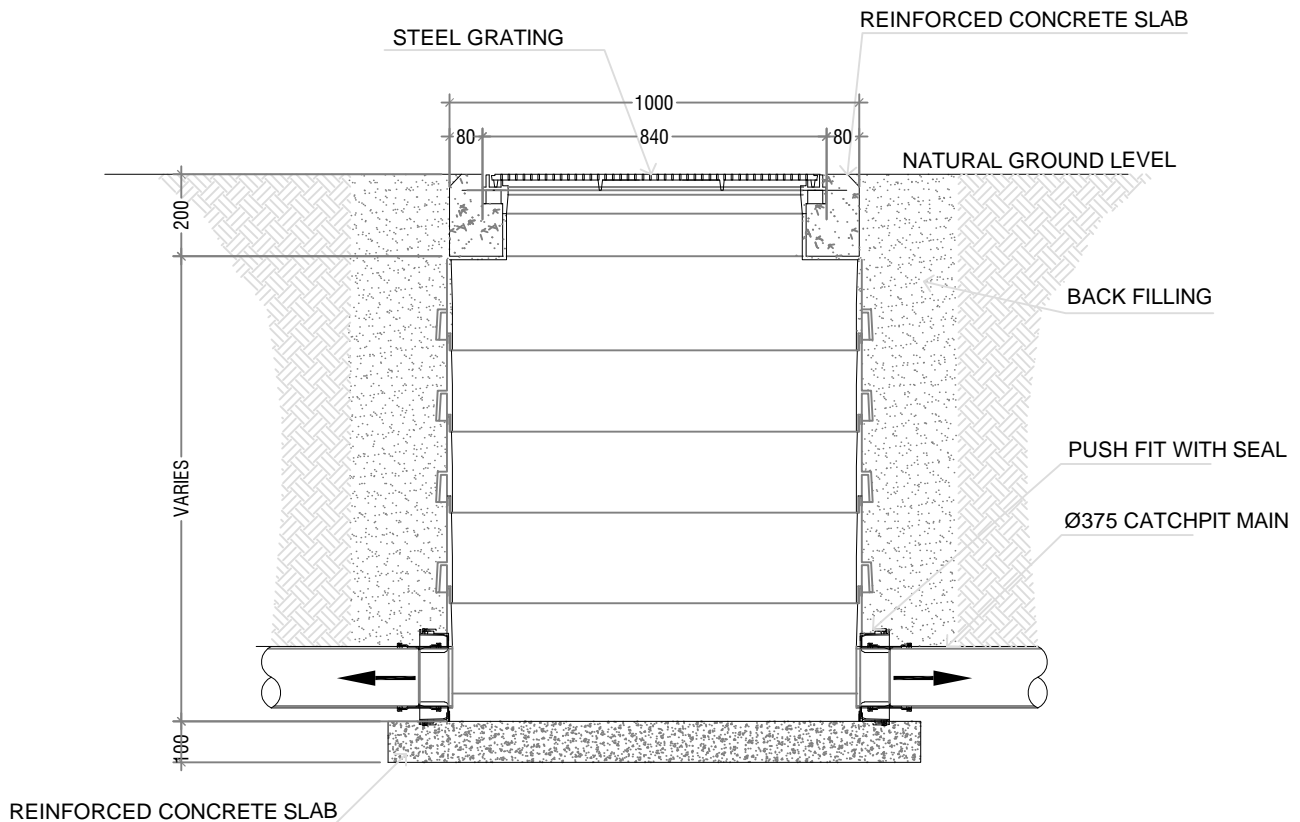
PROJECT : <u>S.FEYDHOO STORMWATER DRAINAGE SYSTEM</u>	TITLE :	DRAWN BY :	WATER SOLUTIONS P.V.T. LTD	DATE	DECEMBER 2017	PAGE NO.  <b>8</b>
	NETWORK DRAWING	DESIGNED BY :	WATER SOLUTIONS P.V.T. LTD	SCALE AS GIVEN		
	CLIENT :			PROJECT No		
	MINISTRY OF ENVIRONMENT & ENERGY		IF IN DOUBT - ASK - DO NOT SCALE			





## CATCH PIT - PLAN VIEW

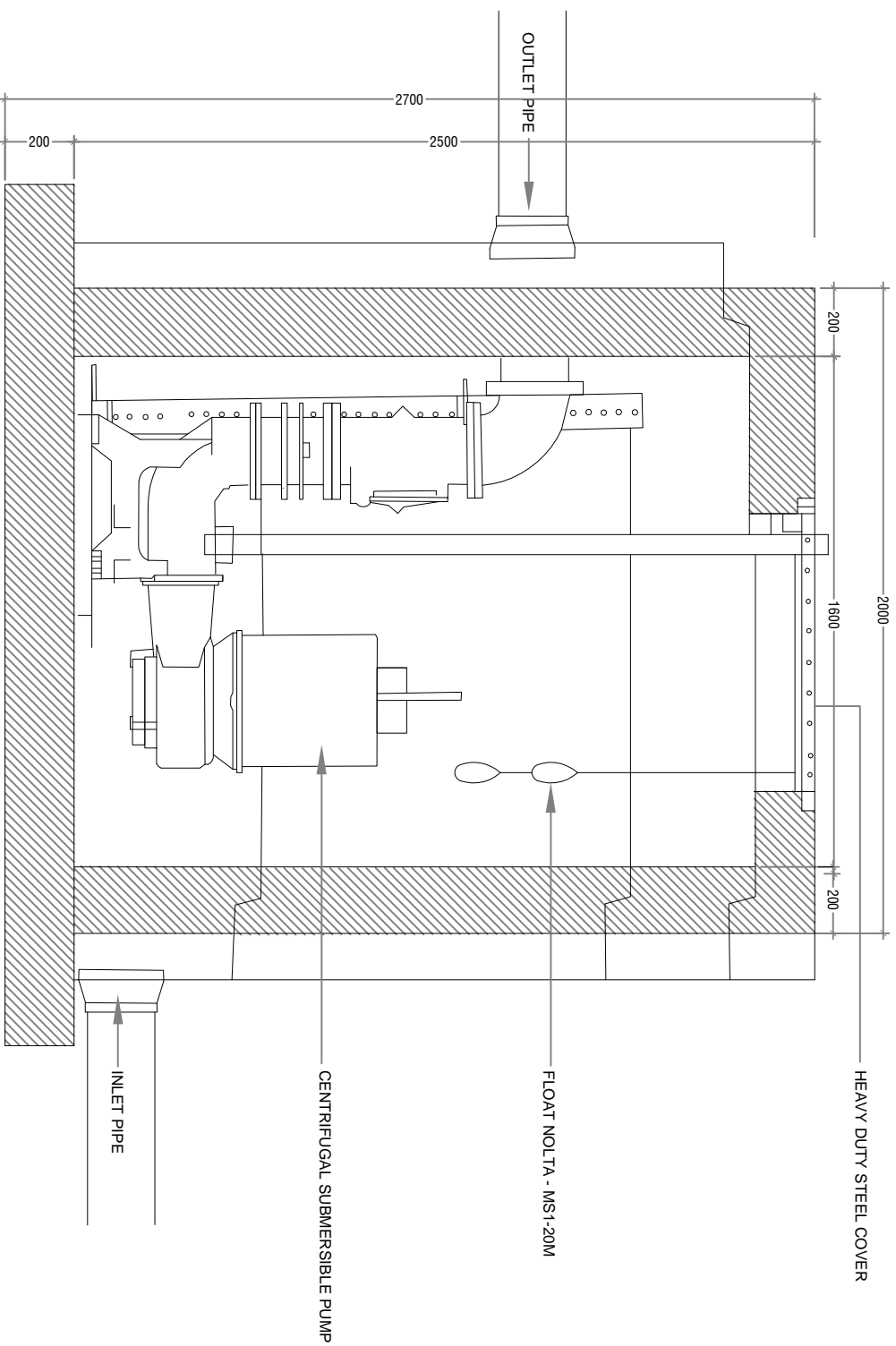
NTS



## SECTION-X-X

NTS

PROJECT : S.FEYDHOO STORMWATER DRAINAGE SYSTEM	TITLE : NETWORK DRAWING	DRAWN BY: DESIGNED BY:	WATER SOLUTIONS PVT. LTD WATER SOLUTIONS PVT. LTD	DATE SCALE AS GIVEN	DECEMBER 2017	PAGE NO.
	CLIENT : MINISTRY OF ENVIRONMENT & ENERGY			PROJECT No		9
			IF IN DOUBT - ASK - DO NOT SCALE			



NTS

PROJECT : <u>S.FEYDHOO STORMWATER DRAINAGE SYSTEM</u>		TITLE : <u>NETWORK DRAWING</u>		DRAWN BY: <u>WATER SOLUTIONS PVT. LTD</u>	DATE	DECEMBER 2017	PAGE NO.
CLIENT : <u>MINISTRY OF ENVIRONMENT &amp; ENERGY</u>		DESIGNED BY: <u>WATER SOLUTIONS PVT. LTD</u>	SCALE <u>AS GIVEN</u>	PROJECT No			10
				IF IN DOUBT - ASK - DO NOT SCALE			





S.FEYDHOO STORM WATER NETWORK - CP-A

Profile no.	Particulars of Flood		Length	Dia. of pipe (ID)	Material	Slope	Cover Level		Invert Level		Pipe Depth	
	From CP	To CP					Upper CP	Lower CP	Upper CP	Lower CP	Upper CP	Lower CP
1	CP-A01	CP-A02	16.20	375	Upvc	0.0050	1.110	1.180	0.510	0.429	0.60	0.75
	CP-A02	CP-A03	15.00	375	Upvc	0.0050	1.180	1.160	0.429	0.354	0.75	0.81
	CP-A03	CP-A04	15.00	375	Upvc	0.0050	1.160	1.160	0.354	0.279	0.81	0.88
	CP-A04	CP-A05	15.00	375	Upvc	0.0050	1.160	0.990	0.279	0.204	0.88	0.79
	CP-A05	CP-A06	21.84	375	Upvc	0.0050	0.990	0.950	0.204	0.095	0.79	0.86
	CP-A06	CP-A07	16.20	375	Upvc	0.0050	0.950	1.110	0.095	0.014	0.86	1.10
	CP-A07	CP-A08	15.00	375	Upvc	0.0050	1.110	1.250	0.014	-0.061	1.10	1.31
	CP-A08	CP-A09	15.00	375	Upvc	0.0050	1.250	1.150	-0.061	-0.136	1.31	1.29
	CP-A09	CP-A10	15.00	375	Upvc	0.0050	1.150	1.100	-0.136	-0.211	1.29	1.31
	CP-A10	CP-A11	13.41	375	Upvc	0.0050	1.100	1.000	-0.211	-0.278	1.31	1.28
	CP-A11	CP-A12	21.20	375	Upvc	0.0050	1.000	1.000	-0.278	-0.384	1.28	1.38
	CP-A12	CP-A13	20.00	375	Upvc	0.0050	1.000	1.140	-0.384	-0.484	1.38	1.62
	CP-A13	CP-A14	16.94	375	Upvc	0.0050	1.140	1.280	-0.484	-0.569	1.62	1.85
	CP-A14	CP-A15	20.00	375	Upvc	0.0050	1.280	1.310	-0.569	-0.669	1.85	1.98
	CP-A15	CP-A16	20.00	375	Upvc	0.0050	1.310	1.310	-0.669	-0.769	1.98	2.08
	CP-A16	CP-A17	15.43	375	Upvc	0.0050	1.310	1.240	-0.769	-0.846	2.08	2.09
	CP-A17	CP-A18	16.75	375	Upvc	0.0050	1.240	1.230	-0.846	-0.930	2.09	2.16
	CP-A18	CP-A19	15.39	375	Upvc	0.0050	1.230	1.260	-0.930	-1.007	2.16	2.27
	CP-A19	CP-A20	21.14	375	Upvc	0.0050	1.260	1.020	-1.007	-1.113	2.27	2.13
	CP-A20	CP-A21	20.05	375	Upvc	0.0050	1.020	0.910	-1.113	-1.213	2.13	2.12
	CP-A21	CP-A22	20.05	375	Upvc	0.0050	0.910	0.960	-1.213	-1.313	2.12	2.27
	CP-A22	CP-A23	20.05	375	Upvc	0.0050	0.960	0.900	-1.313	-1.413	2.27	2.31
	CP-A23	LS-01	16.33	375	Upvc	0.0050	0.900	1.010	-1.413	-1.495	2.31	2.50
	LS-01	CP-A24	12.37	375	Upvc	0.0050	1.010	0.920	0.410	0.348	0.60	0.57
	CP-A24	CP-A25	15.00	375	Upvc	0.0050	0.920	1.000	0.348	0.273	0.57	0.73
	CP-A25	CP-A26	15.00	375	Upvc	0.0050	1.000	0.890	0.273	0.198	0.73	0.69
	CP-A26	CP-A27	15.00	375	Upvc	0.0050	0.890	0.840	0.198	0.123	0.69	0.72
	CP-A27	CP-A28	11.70	375	Upvc	0.0050	0.840	0.890	0.123	0.065	0.72	0.83
	CP-A28	CP-A29	15.00	375	Upvc	0.0050	0.890	0.850	0.065	-0.010	0.83	0.86
	CP-A29	CP-A30	15.00	375	Upvc	0.0050	0.850	0.940	-0.010	-0.085	0.86	1.03
	CP-A30	CP-A31	15.00	375	Upvc	0.0050	0.940	1.020	-0.085	-0.160	1.03	1.18
	CP-A31	CP-A32	15.00	375	Upvc	0.0050	1.020	1.190	-0.160	-0.235	1.18	1.43
	CP-A32	LS-03	20.26	375	Upvc	0.0050	1.190	1.240	-0.235	-0.337	1.43	1.58
2	CP-A11-1	CP-A11-2	21.20	300	Upvc	0.0050	1.510	1.560	0.910	0.804	0.60	0.76
	CP-A11-2	CP-A11-3	20.00	300	Upvc	0.0050	1.560	1.560	0.804	0.704	0.76	0.86
	CP-A11-3	CP-A11-4	19.08	300	Upvc	0.0050	1.560	1.680	0.704	0.609	0.86	1.07
	CP-A11-4	CP-A11-5	21.20	300	Upvc	0.0050	1.680	1.090	0.609	0.503	1.07	0.59
	CP-A11-5	CP-A11-6	20.00	300	Upvc	0.0050	1.090	1.050	0.503	0.403	0.59	0.65
	CP-A11-6	CP-A11-7	20.00	300	Upvc	0.0050	1.050	0.570	0.403	0.303	0.65	0.27
	CP-A11-7	CP-A11	19.38	300	Upvc	0.0050	0.570	1.000	0.303	0.206	0.27	0.79
3	CP-A11-8	CP-A11-9	16.20	300	Upvc	0.0050	0.950	0.950	0.350	0.269	0.60	0.68
	CP-A11-9	CP-A11-10	15.00	300	Upvc	0.0050	0.950	0.900	0.269	0.194	0.68	0.71
	CP-A11-10	CP-A11-11	15.00	300	Upvc	0.0050	0.900	0.900	0.194	0.119	0.71	0.78
	CP-A11-11	CP-A11	11.48	300	Upvc	0.0050	0.900	1.000	0.119	0.062	0.78	0.94
4	CP-A17-1	CP-A17-2	16.20	300	Upvc	0.0050	1.260	1.210	0.660	0.579	0.60	0.63
	CP-A17-2	CP-A17-3	15.00	300	Upvc	0.0050	1.210	1.260	0.579	0.504	0.63	0.76
	CP-A17-3	CP-A17	20.00	300	Upvc	0.0050	1.260	1.240	0.504	0.404	0.76	0.84
5	CP-A19-1	CP-A19-2	16.20	300	Upvc	0.0050	1.110	1.110	0.510	0.429	0.60	0.68
	CP-A19-2	CP-A19-3	15.00	300	Upvc	0.0050	1.110	1.050	0.429	0.354	0.68	0.70
	CP-A19-3	CP-A19-4	15.00	300	Upvc	0.0050	1.050	1.050	0.354	0.279	0.70	0.77
	CP-A19-4	CP-A19-5	15.00	300	Upvc	0.0050	1.050	1.050	0.279	0.204	0.77	0.85
	CP-A19-5	CP-A19-6	15.60	300	Upvc	0.0050	1.050	1.020	0.204	0.126	0.85	0.89
	CP-A19-6	CP-A19-7	16.20	300	Upvc	0.0050	1.020	0.960	0.126	0.045	0.89	0.92
	CP-A19-7	CP-A19-8	15.00	300	Upvc	0.0050	0.960	0.950	0.045	-0.030	0.92	0.98
	CP-A19-8	CP-A19-9	15.00	300	Upvc	0.0050	0.950	0.950	-0.030	-0.105	0.98	1.06
	CP-A19-9	CP-A19-10	20.88	300	Upvc	0.0050	0.950	1.050	-0.105	-0.209	1.06	1.26
	CP-A19-10	CP-A19-11	16.20	300	Upvc	0.0050	1.050	1.260	-0.209	-0.290	1.26	1.55
	CP-A19-11	CP-A19-12	15.00	300	Upvc	0.0050	1.260	1.300	-0.290	-0.365	1.55	1.67
	CP-A19-12	CP-A19-13	15.00	300	Upvc	0.0050	1.300	1.330	-0.365	-0.440	1.67	1.77
	CP-A19-13	CP-A19	10.58	300	Upvc	0.0050	1.330	1.260	-0.440	-0.493	1.77	1.75
6	CP-A19-6A	CP-A19-6B	16.27	300	Upvc	0.0040	0.860	1.020	0.260	0.195	0.60	0.83
	CP-A19-6B	CP-A19-6	13.40	300	Upvc	0.0040	1.020	1.020	0.195	0.141	0.83	0.88
7	CP-A33	CP-A34	16.20	375	Upvc	0.0050	1.350	1.200	0.750	0.669	0.60	0.53
	CP-A34	CP-A35	15.00	375	Upvc	0.0050	1.200	1.270	0.669	0.594	0.53	0.68

	CP-A35	CP-A36	15.00	375	Upvc	0.0050	1.270	1.270	0.594	0.519	0.68	0.75
	CP-A36	CP-A37	15.00	375	Upvc	0.0050	1.270	1.270	0.519	0.444	0.75	0.83
	CP-A37	CP-A38	15.00	375	Upvc	0.0050	1.270	1.240	0.444	0.369	0.83	0.87
	CP-A38	CP-A39	15.00	375	Upvc	0.0050	1.240	1.240	0.369	0.294	0.87	0.95
	CP-A39	CP-A40	15.00	375	Upvc	0.0050	1.240	1.180	0.294	0.219	0.95	0.96
	CP-A40	CP-A41	15.00	375	Upvc	0.0050	1.180	1.180	0.219	0.144	0.96	1.04
	CP-A41	CP-A42	15.00	375	Upvc	0.0050	1.180	1.150	0.144	0.069	1.04	1.08
	CP-A42	CP-A43	15.00	375	Upvc	0.0050	1.150	1.150	0.069	-0.006	1.08	1.16
	CP-A43	CP-A44	17.96	375	Upvc	0.0050	1.150	1.230	-0.006	-0.096	1.16	1.33
	CP-A44	CP-A45	17.04	375	Upvc	0.0050	1.230	1.050	-0.096	-0.181	1.33	1.23
	CP-A45	CP-A46	15.00	375	Upvc	0.0050	1.050	1.050	-0.181	-0.256	1.23	1.31
	CP-A46	CP-A47	15.00	375	Upvc	0.0050	1.050	0.990	-0.256	-0.331	1.31	1.32
	CP-A47	CP-A48	17.52	375	Upvc	0.0050	0.990	0.960	-0.331	-0.419	1.32	1.38
	CP-A48	CP-A49	12.48	375	Upvc	0.0050	0.960	1.020	-0.419	-0.481	1.38	1.50
	CP-A49	CP-A50	15.00	375	Upvc	0.0050	1.020	1.020	-0.481	-0.556	1.50	1.58
	CP-A50	CP-A51	15.00	375	Upvc	0.0050	1.020	1.020	-0.556	-0.631	1.58	1.65
	CP-A51	CP-A52	15.00	375	Upvc	0.0050	1.020	1.050	-0.631	-0.706	1.65	1.76
	CP-A52	CP-A53	15.00	375	Upvc	0.0050	1.050	1.050	-0.706	-0.781	1.76	1.83
	CP-A53	LS-02	15.00	375	Upvc	0.0050	1.050	0.980	-0.781	-0.856	1.83	1.84
	LS-02	CP-A54	15.00	375	Upvc	0.0050	0.980	0.980	0.380	0.305	0.60	0.68
	CP-A54	CP-A55	15.00	375	Upvc	0.0050	0.980	1.510	0.305	0.230	0.68	1.28
	CP-A55	LS-01	10.09	375	Upvc	0.0050	1.510	1.010	0.230	0.180	1.28	0.83
8	CP-A56	CP-A57	16.20	375	Upvc	0.0050	1.060	0.980	0.460	0.379	0.60	0.60
	CP-A57	CP-A58	15.00	375	Upvc	0.0050	0.980	0.980	0.379	0.304	0.60	0.68
	CP-A58	CP-A59	15.00	375	Upvc	0.0050	0.980	0.910	0.304	0.229	0.68	0.68
	CP-A59	LS-01	17.55	375	Upvc	0.0050	0.910	1.010	0.229	0.141	0.68	0.87
9	CP-A28-1	CP-A28-2	16.20	375	Upvc	0.0030	1.060	1.160	0.460	0.411	0.60	0.75
	CP-A28-2	CP-A28-3	15.00	375	Upvc	0.0030	1.160	1.160	0.411	0.366	0.75	0.79
	CP-A28-3	CP-A28-4	15.00	375	Upvc	0.0030	1.160	0.920	0.366	0.321	0.79	0.60
	CP-A28-4	CP-A28-5	15.00	375	Upvc	0.0030	0.920	0.920	0.321	0.276	0.60	0.64
	CP-A28-5	CP-A28-6	15.00	375	Upvc	0.0030	0.920	0.870	0.276	0.231	0.64	0.64
	CP-A28-6	CP-A28-7	15.00	375	Upvc	0.0030	0.870	0.870	0.231	0.186	0.64	0.68
	CP-A28-7	CP-A28-8	15.00	375	Upvc	0.0030	0.870	0.810	0.186	0.141	0.68	0.67
	CP-A28-8	CP-A28	21.03	375	Upvc	0.0030	0.810	0.890	0.141	0.078	0.67	0.81
10	CP-A28-9	CP-A28-10	16.20	375	Upvc	0.0050	1.030	0.980	0.430	0.349	0.60	0.63
	CP-A28-10	CP-A28-11	15.00	375	Upvc	0.0050	0.980	0.980	0.349	0.274	0.63	0.71
	CP-A28-11	CP-A28-12	15.00	375	Upvc	0.0050	0.980	0.950	0.274	0.199	0.71	0.75
	CP-A28-12	CP-A28	14.78	375	Upvc	0.0050	0.950	0.890	0.199	0.125	0.75	0.76
11	CP-A60	CP-A61	26.20	375	Upvc	0.0050	1.200	1.260	0.600	0.469	0.60	0.79
	CP-A61	CP-A62	25.00	375	Upvc	0.0050	1.260	1.300	0.469	0.344	0.79	0.96
	CP-A62	CP-A63	25.00	375	Upvc	0.0050	1.300	1.240	0.344	0.219	0.96	1.02
	CP-A63	CP-A64	22.52	375	Upvc	0.0050	1.240	1.150	0.219	0.106	1.02	1.04
	CP-A64	LS-03	3.77	375	Upvc	0.0050	1.150	1.240	0.106	0.088	1.04	1.15

**S.FEYDHOO STORM WATER NETWORK - CP-B**

Profile no.	Particulars of Flood		Length m	Dia. of pipe (ID) mm	Material	Slope	Cover Level		Invert Level		Pipe Depth	
	From CP	To CP					Upper CP	Lower CP	Upper CP	Lower CP	Upper CP	Lower CP
1	CP-B01	CP-B02	26.20	375	Upvc	0.0050	1.300	1.360	0.700	0.569	0.60	0.79
	CP-B02	CP-B03	25.00	375	Upvc	0.0050	1.360	1.350	0.569	0.444	0.79	0.91
	CP-B03	CP-B04	25.00	375	Upvc	0.0050	1.350	1.240	0.444	0.319	0.91	0.92
	CP-B04	CP-B05	25.00	375	Upvc	0.0050	1.240	1.240	0.319	0.194	0.92	1.05
	CP-B05	CP-B06	23.53	375	Upvc	0.0050	1.240	1.240	0.194	0.076	1.05	1.16
	CP-B06	CP-B07	15.60	375	Upvc	0.0050	1.240	1.120	0.076	-0.002	1.16	1.12
	CP-B07	CP-B08	15.00	375	Upvc	0.0050	1.120	1.020	-0.002	-0.077	1.12	1.10
	CP-B08	CP-B09	15.00	375	Upvc	0.0050	1.020	0.900	-0.077	-0.152	1.10	1.05
	CP-B09	CP-B10	18.05	375	Upvc	0.0050	0.900	1.340	-0.152	-0.242	1.05	1.58
	CP-B10	CP-B11	16.10	375	Upvc	0.0050	1.340	0.870	-0.242	-0.322	1.58	1.19
	CP-B11	CP-B12	15.00	375	Upvc	0.0050	0.870	0.840	-0.322	-0.397	1.19	1.24
	CP-B12	CP-B13	15.00	375	Upvc	0.0050	0.840	0.840	-0.397	-0.472	1.24	1.31
	CP-B13	CP-B14	15.00	375	Upvc	0.0050	0.840	0.930	-0.472	-0.547	1.31	1.48
	CP-B14	CP-B15	18.50	375	Upvc	0.0050	0.930	1.000	-0.547	-0.640	1.48	1.64
	CP-B15	CP-B16	14.25	375	Upvc	0.0050	1.000	1.020	-0.640	-0.711	1.64	1.73
	CP-B16	CP-B17	16.20	375	Upvc	0.0050	1.020	0.910	-0.711	-0.792	1.73	1.70
	CP-B17	CP-B18	15.00	375	Upvc	0.0050	0.910	1.020	-0.792	-0.867	1.70	1.89
	CP-B18	CP-B19	15.00	375	Upvc	0.0050	1.020	1.200	-0.867	-0.942	1.89	2.14
	CP-B19	CP-B20	15.00	375	Upvc	0.0050	1.200	1.140	-0.942	-1.017	2.14	2.16
	CP-B20	CP-B21	15.00	375	Upvc	0.0050	1.140	1.070	-1.017	-1.092	2.16	2.16
	CP-B21	CP-B22	15.00	375	Upvc	0.0050	1.070	1.200	-1.092	-1.167	2.16	2.37
	CP-B22	LS-04	17.23	375	Upvc	0.0050	1.200	1.250	-1.167	-1.253	2.37	2.50
	LS-04	CP-B24	16.20	375	Upvc	0.0050	1.250	1.260	0.650	0.569	0.60	0.69
	CP-B24	CP-B25	15.00	375	Upvc	0.0050	1.260	1.180	0.569	0.494	0.69	0.69
	CP-B25	CP-B26	15.00	375	Upvc	0.0050	1.180	1.240	0.494	0.419	0.69	0.82
	CP-B26	CP-B27	15.00	375	Upvc	0.0050	1.240	1.280	0.419	0.344	0.82	0.94
	CP-B27	CP-B28	15.00	375	Upvc	0.0050	1.280	1.270	0.344	0.269	0.94	1.00
	CP-B28	CP-B29	15.00	375	Upvc	0.0050	1.270	1.260	0.269	0.194	1.00	1.07
	CP-B29	CP-B30	5.99	375	Upvc	0.0050	1.260	1.220	0.194	0.164	1.07	1.06
	CP-B30	CP-B31	16.23	375	Upvc	0.0050	1.220	1.230	0.164	0.083	1.06	1.15
	CP-B31	CP-B32	15.00	375	Upvc	0.0050	1.230	1.290	0.083	0.008	1.15	1.28
	CP-B32	CP-B33	15.00	375	Upvc	0.0050	1.290	1.300	0.008	-0.067	1.28	1.37
	CP-B33	CP-B34	15.00	375	Upvc	0.0050	1.300	1.210	-0.067	-0.142	1.37	1.35
	CP-B34	CP-B35	8.57	375	Upvc	0.0050	1.210	1.180	-0.142	-0.185	1.35	1.36
	CP-B35	CP-B36	16.20	375	Upvc	0.0050	1.180	1.160	-0.185	-0.266	1.36	1.43
	CP-B36	CP-B37	15.00	375	Upvc	0.0050	1.160	1.160	-0.266	-0.341	1.43	1.50
	CP-B37	LS-05	22.53	375	Upvc	0.0050	1.160	1.320	-0.341	-0.454	1.50	1.77
2	CP-B6-1	CP-B6-2	16.20	300	Upvc	0.0050	1.400	1.400	0.800	0.719	0.60	0.68
	CP-B6-2	CP-B6-3	15.00	300	Upvc	0.0050	1.400	1.440	0.719	0.644	0.68	0.80
	CP-B6-3	CP-B6	15.10	300	Upvc	0.0050	1.440	1.240	0.644	0.569	0.80	0.67
3	CP-B10-1	CP-B10-2	16.20	375	Upvc	0.0050	1.040	1.030	0.440	0.359	0.60	0.67
	CP-B10-2	CP-B10-3	15.00	375	Upvc	0.0050	1.030	1.030	0.359	0.284	0.67	0.75
	CP-B10-3	CP-B10-4	15.00	375	Upvc	0.0050	1.030	1.710	0.284	0.209	0.75	1.50
	CP-B10-4	CP-B10-5	15.00	375	Upvc	0.0050	1.710	1.630	0.209	0.134	1.50	1.50
	CP-B10-5	CP-B10-6	15.00	375	Upvc	0.0050	1.630	0.790	0.134	0.059	1.50	0.73
	CP-B10-6	CP-B10	10.62	375	Upvc	0.0050	0.790	1.340	0.059	0.006	0.73	1.33
4	CP-B10-7	CP-B10-8	15.00	375	Upvc	0.0050	1.520	1.480	0.920	0.845	0.60	0.64
	CP-B10-8	CP-B10-9	15.00	375	Upvc	0.0050	1.480	1.420	0.845	0.770	0.64	0.65
	CP-B10-9	CP-B10	15.35	375	Upvc	0.0050	1.420	1.340	0.770	0.693	0.65	0.65
5	CP-B15-1	CP-B15-2	15.00	375	Upvc	0.0050	0.930	0.930	0.330	0.255	0.60	0.68
	CP-B15-2	CP-B15-3	15.00	375	Upvc	0.0050	0.930	1.000	0.255	0.180	0.68	0.82
	CP-B15-3	CP-B15	10.31	375	Upvc	0.0050	1.000	1.000	0.180	0.128	0.82	0.87
6	CP-B16-1	CP-B16-2	16.20	375	Upvc	0.0050	1.220	1.270	0.620	0.539	0.60	0.73



	CP-B16-2	CP-B16-3	15.00	375	Upvc	0.0050	1.270	1.280	0.539	0.464	0.73	0.82
	CP-B16-3	CP-B16-4	15.00	375	Upvc	0.0050	1.280	1.280	0.464	0.389	0.82	0.89
	CP-B16-4	CP-B16-5	14.96	375	Upvc	0.0050	1.280	1.080	0.389	0.314	0.89	0.77
	CP-B16-5	CP-B16-6	15.04	375	Upvc	0.0050	1.080	1.020	0.314	0.239	0.77	0.78
	CP-B16-6	CP-B16	10.51	375	Upvc	0.0050	1.020	1.020	0.239	0.186	0.78	0.83
7	CP-B23-1	CP-B23-2	16.20	375	Upvc	0.0050	1.320	1.180	0.720	0.639	0.60	0.54
	CP-B23-2	CP-B23-3	15.00	375	Upvc	0.0050	1.180	1.350	0.639	0.564	0.54	0.79
	CP-B23-3	CP-B23-4	15.00	375	Upvc	0.0050	1.350	1.270	0.564	0.489	0.79	0.78
	CP-B23-4	CP-B23-5	14.96	375	Upvc	0.0050	1.270	1.250	0.489	0.414	0.78	0.84
	CP-B23-5	CP-B23-6	15.04	375	Upvc	0.0050	1.250	1.220	0.414	0.339	0.84	0.88
	CP-B23-6	LS-04	10.87	375	Upvc	0.0050	1.220	1.250	0.339	0.285	0.88	0.97
8	CP-B23-7	CP-B23-8	15.00	375	Upvc	0.0050	1.220	1.200	0.620	0.545	0.60	0.66
	CP-B23-8	CP-B23-9	15.00	375	Upvc	0.0050	1.200	1.200	0.545	0.470	0.66	0.73
	CP-B23-9	LS-04	10.31	375	Upvc	0.0050	1.200	1.250	0.470	0.418	0.73	0.83
9	CP-B30-1	CP-B30-2	16.20	375	Upvc	0.0050	1.390	1.310	0.790	0.709	0.60	0.60
	CP-B30-2	CP-B30-3	15.00	375	Upvc	0.0050	1.310	1.370	0.709	0.634	0.60	0.74
	CP-B30-3	CP-B30-4	15.00	375	Upvc	0.0050	1.370	1.280	0.634	0.559	0.74	0.72
	CP-B30-4	CP-B30-5	14.96	375	Upvc	0.0050	1.280	1.280	0.559	0.484	0.72	0.80
	CP-B30-5	CP-B30-6	15.04	375	Upvc	0.0050	1.280	1.220	0.484	0.409	0.80	0.81
	CP-B30-6	CP-B30	10.87	375	Upvc	0.0050	1.220	1.220	0.409	0.355	0.81	0.87
10	CP-B30-7	CP-B30-8	15.00	375	Upvc	0.0050	1.060	1.090	0.460	0.385	0.60	0.71
	CP-B30-8	CP-B30-9	15.00	375	Upvc	0.0050	1.090	1.090	0.385	0.310	0.71	0.78
	CP-B30-9	CP-B30	18.50	375	Upvc	0.0050	1.090	1.220	0.310	0.218	0.78	1.00
11	CP-B35-1	CP-B35-2	15.00	375	Upvc	0.0050	1.030	1.080	0.430	0.355	0.60	0.73
	CP-B35-2	CP-B35-3	15.00	375	Upvc	0.0050	1.080	1.250	0.355	0.280	0.73	0.97
	CP-B35-3	CP-B35	18.50	375	Upvc	0.0050	1.250	1.180	0.280	0.188	0.97	0.99
12	CP-B39	CP-B40	25.01	375	Upvc	0.0050	1.230	1.260	0.630	0.505	0.60	0.76
	CP-B40	CP-B41	25.01	375	Upvc	0.0050	1.260	1.260	0.505	0.380	0.76	0.88
	CP-B41	CP-B42	26.09	375	Upvc	0.0050	1.260	1.320	0.380	0.249	0.88	1.07
	CP-B42	LS-05	11.13	375	Upvc	0.0050	1.320	1.320	0.249	0.194	1.07	1.13

**S.FEYDHOO STORM WATER NETWORK - CP-C**

Profile no.	Particulars of Flood		Length m	Dia. of pipe (ID) mm	Material	Slope	Cover Level		Invert Level		Pipe Depth	
	From CP	To CP					Upper CP	Lower CP	Upper CP	Lower CP	Upper CP	Lower CP
1	CP-C01	CP-C02	21.07	375	Upvc	0.0050	1.090	1.140	0.490	0.385	0.60	0.76
	CP-C02	CP-C03	20.00	375	Upvc	0.0050	1.140	1.180	0.385	0.285	0.76	0.90
	CP-C03	CP-C04	20.00	375	Upvc	0.0050	1.180	1.190	0.285	0.185	0.90	1.01
	CP-C04	CP-C05	20.00	375	Upvc	0.0050	1.190	1.180	0.185	0.085	1.01	1.10
	CP-C05	CP-C06	12.64	375	Upvc	0.0050	1.180	1.260	0.085	0.021	1.10	1.24
	CP-C06	CP-C07	21.20	375	Upvc	0.0050	1.260	1.180	0.021	-0.085	1.24	1.26
	CP-C07	CP-C08	20.00	375	Upvc	0.0050	1.180	1.230	-0.085	-0.185	1.26	1.41
	CP-C08	CP-C09	20.00	375	Upvc	0.0050	1.230	1.260	-0.185	-0.285	1.41	1.54
	CP-C09	CP-C10	20.00	375	Upvc	0.0050	1.260	1.810	-0.285	-0.385	1.54	2.19
	CP-C10	CP-C11	16.06	375	Upvc	0.0050	1.810	1.340	-0.385	-0.465	2.19	1.80
	CP-C11	CP-C12	24.29	375	Upvc	0.0050	1.340	1.440	-0.465	-0.586	1.80	2.03
	CP-C12	CP-C13	20.00	375	Upvc	0.0050	1.440	1.390	-0.586	-0.686	2.03	2.08
	CP-C13	CP-C14	13.89	375	Upvc	0.0050	1.390	1.310	-0.686	-0.756	2.08	2.07
	CP-C14	LS-06	20.00	375	Upvc	0.0050	1.310	1.290	-0.756	-0.856	2.07	2.15
	LS-06	CP-C15	20.00	375	Upvc	0.0050	1.290	1.630	0.690	0.590	0.60	1.04
	CP-C15	CP-C16	20.00	375	Upvc	0.0050	1.630	1.540	0.590	0.490	1.04	1.05
	CP-C16	CP-C17	23.07	375	Upvc	0.0050	1.540	1.530	0.490	0.375	1.05	1.16
	CP-C17	CP-C18	25.42	375	Upvc	0.0050	1.530	1.510	0.375	0.248	1.16	1.26
	CP-C18	CP-C19	20.00	375	Upvc	0.0050	1.510	1.500	0.248	0.148	1.26	1.35
	CP-C19	CP-C20	20.00	375	Upvc	0.0050	1.500	1.500	0.148	0.048	1.35	1.45
	CP-C20	CP-C21	20.00	375	Upvc	0.0050	1.500	1.350	0.048	-0.052	1.45	1.40
	CP-C21	LS-07	20.00	375	Upvc	0.0050	1.350	1.200	-0.052	-0.152	1.40	1.35
2	CP-C06-1	CP-C06-2	15.00	300	Upvc	0.0050	1.810	1.810	1.210	1.135	0.60	0.68
	CP-C06-2	CP-C06-3	15.00	300	Upvc	0.0050	1.810	1.780	1.135	1.060	0.68	0.72
	CP-C06-3	CP-C06-4	15.00	300	Upvc	0.0050	1.780	1.680	1.060	0.985	0.72	0.70
	CP-C06-4	CP-C06-5	15.00	300	Upvc	0.0050	1.680	1.800	0.985	0.910	0.70	0.89
	CP-C06-5	CP-C06	17.04	300	Upvc	0.0050	1.800	1.260	0.910	0.825	0.89	0.44
3	CP-C06-6	CP-C06-7	15.00	300	Upvc	0.0050	1.240	1.260	0.640	0.565	0.60	0.70
	CP-C06-7	CP-C06-8	15.00	300	Upvc	0.0050	1.260	1.260	0.565	0.490	0.70	0.77
	CP-C06-8	CP-C06-9	15.00	300	Upvc	0.0050	1.260	1.240	0.490	0.415	0.77	0.83
	CP-C06-9	CP-C06-10	15.00	300	Upvc	0.0050	1.240	1.220	0.415	0.340	0.83	0.88
	CP-C06-10	CP-C06	15.00	300	Upvc	0.0050	1.220	1.260	0.340	0.265	0.88	1.00
4	CP-C11-1	CP-C11-2	15.00	300	Upvc	0.0050	1.410	1.370	0.810	0.735	0.60	0.64
	CP-C11-2	CP-C11-3	15.00	300	Upvc	0.0050	1.370	1.380	0.735	0.660	0.64	0.72
	CP-C11-3	CP-C11-4	15.00	300	Upvc	0.0050	1.380	1.490	0.660	0.585	0.72	0.91
	CP-C11-4	CP-C11-5	15.00	300	Upvc	0.0050	1.490	1.370	0.585	0.510	0.91	0.86
	CP-C11-5	CP-C11-6	15.00	300	Upvc	0.0050	1.370	1.360	0.510	0.435	0.86	0.93
	CP-C11-6	CP-C11	17.04	300	Upvc	0.0050	1.360	1.340	0.435	0.350	0.93	0.99
5	CP-C11-7	CP-C11-8	15.00	300	Upvc	0.0050	1.350	1.240	0.750	0.675	0.60	0.57
	CP-C11-8	CP-C11-9	15.00	300	Upvc	0.0050	1.240	1.270	0.675	0.600	0.57	0.67
	CP-C11-9	CP-C11-10	15.00	300	Upvc	0.0050	1.270	1.240	0.600	0.525	0.67	0.72
	CP-C11-10	CP-C11-11	15.00	300	Upvc	0.0050	1.240	1.290	0.525	0.450	0.72	0.84
	CP-C11-11	CP-C11	13.90	300	Upvc	0.0050	1.290	1.340	0.450	0.381	0.84	0.96
6	CP-C22	CP-C23	24.99	375	Upvc	0.0050	1.330	1.260	0.730	0.605	0.60	0.65
	CP-C23	CP-C24	24.99	375	Upvc	0.0050	1.260	1.260	0.605	0.480	0.65	0.78
	CP-C24	CP-C25	24.99	375	Upvc	0.0050	1.260	1.270	0.480	0.355	0.78	0.91
	CP-C25	LS-07	26.09	375	Upvc	0.0050	1.270	1.200	0.355	0.225	0.91	0.98
7	CP-C26	CP-C27	26.23	375	Upvc	0.0050	1.190	1.320	0.590	0.459	0.60	0.86
	CP-C27	CP-C28	24.99	375	Upvc	0.0050	1.320	1.240	0.459	0.334	0.86	0.91
	CP-C28	LS-07	24.89	375	Upvc	0.0050	1.240	1.200	0.334	0.209	0.91	0.99

**S.FEYDHOO STORM WATER NETWORK - CP-D**

Profile no.	Particulars of Flood		Length m	Dia. of pipe (ID) mm	Material	Slope	Cover Level		Invert Level		Pipe Depth	
	From CP	To CP					Upper CP	Lower CP	Upper CP	Lower CP	Upper CP	Lower CP
1	CP-D01	CP-D02	15.00	375	Upvc	0.0050	1.770	1.800	1.170	1.095	0.60	0.71
	CP-D02	CP-D03	15.00	375	Upvc	0.0050	1.800	1.780	1.095	1.020	0.71	0.76
	CP-D03	CP-D04	15.00	375	Upvc	0.0050	1.780	1.820	1.020	0.945	0.76	0.88
	CP-D04	CP-D05	15.00	375	Upvc	0.0050	1.820	1.760	0.945	0.870	0.88	0.89
	CP-D05	CP-D06	15.00	375	Upvc	0.0050	1.760	1.840	0.870	0.795	0.89	1.05
	CP-D06	CP-D07	14.18	375	Upvc	0.0050	1.840	1.930	0.795	0.724	1.05	1.21
	CP-D07	CP-D08	21.06	375	Upvc	0.0050	1.930	1.320	0.724	0.619	1.21	0.70
	CP-D08	CP-D09	20.00	375	Upvc	0.0050	1.320	1.320	0.619	0.519	0.70	0.80
	CP-D09	CP-D10	20.00	375	Upvc	0.0050	1.320	1.380	0.519	0.419	0.80	0.96
	CP-D10	CP-D11	20.00	375	Upvc	0.0050	1.380	1.240	0.419	0.319	0.96	0.92
	CP-D11	CP-D12	15.26	375	Upvc	0.0050	1.240	1.280	0.319	0.243	0.92	1.04
	CP-D12	CP-D13	21.07	375	Upvc	0.0050	1.280	1.250	0.243	0.137	1.04	1.11
	CP-D13	CP-D14	20.00	375	Upvc	0.0050	1.250	1.240	0.137	0.037	1.11	1.20
	CP-D14	CP-D15	20.00	375	Upvc	0.0050	1.240	0.980	0.037	-0.063	1.20	1.04
	CP-D15	CP-D16	20.00	375	Upvc	0.0050	0.980	1.220	-0.063	-0.163	1.04	1.38
	CP-D16	CP-D17	18.24	375	Upvc	0.0050	1.220	1.220	-0.163	-0.254	1.38	1.47
	CP-D17	CP-D18	20.00	375	Upvc	0.0050	1.220	1.230	-0.254	-0.354	1.47	1.58
	CP-D18	CP-D19	20.00	375	Upvc	0.0050	1.230	1.120	-0.354	-0.454	1.58	1.57
	CP-D19	CP-D20	20.00	375	Upvc	0.0050	1.120	1.050	-0.454	-0.554	1.57	1.60
	CP-D20	CP-D21	10.38	375	Upvc	0.0050	1.050	1.110	-0.554	-0.606	1.60	1.72
	CP-D21	CP-D22	20.00	375	Upvc	0.0050	1.110	1.130	-0.606	-0.706	1.72	1.84
	CP-D22	CP-D23	20.00	375	Upvc	0.0050	1.130	1.200	-0.706	-0.806	1.84	2.01
	CP-D23	LS-08	21.96	375	Upvc	0.0050	1.200	1.250	-0.806	-0.916	2.01	2.17

2	CP-D07-1	CP-D07-2	16.58	300	Upvc	0.0010	1.400	1.930	0.800	0.783	0.60	1.15
	CP-D07-2	CP-D07-3	15.00	300	Upvc	0.0010	1.930	1.800	0.783	0.768	1.15	1.03
	CP-D07-3	CP-D07	16.20	300	Upvc	0.0010	1.800	1.930	0.768	0.752	1.03	1.18

3	CP-D12-1	CP-D12-2	15.00	300	Upvc	0.0020	1.310	1.260	0.710	0.680	0.60	0.58
	CP-D12-2	CP-D12-3	15.00	300	Upvc	0.0020	1.260	1.260	0.680	0.650	0.58	0.61
	CP-D12-3	CP-D12-4	15.00	300	Upvc	0.0020	1.260	1.350	0.650	0.620	0.61	0.73
	CP-D12-4	CP-D12-5	15.00	300	Upvc	0.0020	1.350	1.370	0.620	0.590	0.73	0.78
	CP-D12-5	CP-D12-6	15.00	300	Upvc	0.0020	1.370	1.330	0.590	0.560	0.78	0.77
	CP-D12-6	CP-D12-7	15.00	300	Upvc	0.0020	1.330	1.230	0.560	0.530	0.77	0.70
	CP-D12-7	CP-D12-8	15.00	300	Upvc	0.0020	1.230	1.330	0.530	0.500	0.70	0.83
	CP-D12-8	CP-D12-9	15.00	300	Upvc	0.0020	1.330	1.300	0.500	0.470	0.83	0.83
	CP-D12-9	CP-D12-10	15.00	300	Upvc	0.0020	1.300	1.220	0.470	0.440	0.83	0.78
	CP-D12-10	CP-D12-11	15.00	300	Upvc	0.0020	1.220	1.320	0.440	0.410	0.78	0.91
	CP-D12-11	CP-D12	16.30	300	Upvc	0.0020	1.320	1.280	0.410	0.377	0.91	0.90

4	CP-D12-13	CP-D12-14	15.00	300	Upvc	0.0050	1.460	1.310	0.860	0.785	0.60	0.53
	CP-D12-14	CP-D12-15	15.00	300	Upvc	0.0050	1.310	1.440	0.785	0.710	0.53	0.73
	CP-D12-15	CP-D12-16	15.00	300	Upvc	0.0050	1.440	1.300	0.710	0.635	0.73	0.67
	CP-D12-16	CP-D12-17	15.00	300	Upvc	0.0050	1.300	1.370	0.635	0.560	0.67	0.81
	CP-D12-17	CP-D12	14.08	300	Upvc	0.0050	1.370	1.280	0.560	0.490	0.81	0.79

5	CP-D25	CP-D26	24.32	375	Upvc	0.0050	1.330	1.340	0.730	0.608	0.60	0.73
	CP-D26	CP-D27	25.01	375	Upvc	0.0050	1.340	1.420	0.608	0.483	0.73	0.94
	CP-D27	CP-D28	20.28	375	Upvc	0.0050	1.420	1.250	0.483	0.382	0.94	0.87
	CP-D28	LS-08	104.00	375	Upvc	0.0050	1.250	1.250	0.382	-0.138	0.87	1.39