

SITE PLAN
SCALE 1:100



MALDIVES POLICE SERVICE MALE',
REPUBLIC OF MALDIVES
FINANCE DEPARTMENT
INFRASTRUCTURE UNIT

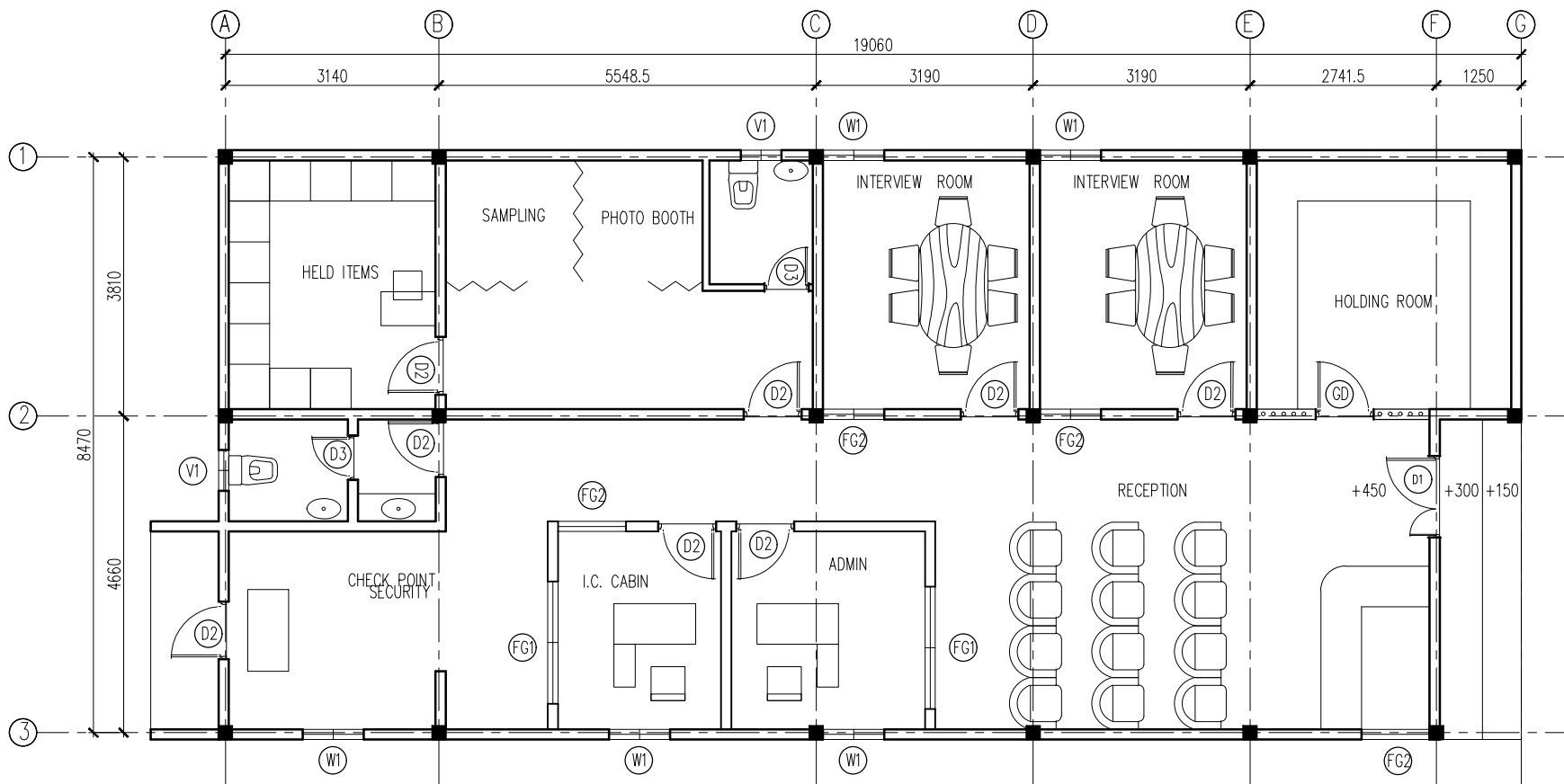
PROJECT: JUVENILE DETENTION (ARRESTATION FACILITY)

RECOMMENDATION APPROVED _____
MOHAMED JAMSHEED
ASSISTANT COMMISSIONER OF POLICE
HEAD OF INTEGRATED SERVICE COMMAND

DESIGN APPROVED _____
ABDULLA NASEER
CHIEF INSPECTOR OF POLICE
HEAD OF FINANCE DEPARTMENT

APPROVED _____
ALI RASHEEDH
ASSISTANT COMMISSIONER OF POLICE
HEAD OF SERVICE SUPPORT DIRECTORATE

A00



GROUND FLOOR PLAN

SCALE 1:100



MALDIVES POLICE SERVICE MALE',
REPUBLIC OF MALDIVES
FINANCE DEPARTMENT
INFRASTRUCTURE UNIT

PROJECT: JUVENILE DETENTION (ARRESTATION FACILITY)

RECOMMENDATION APPROVED

MOHAMED JAMSEED
ASSISTANT COMMISSIONER OF POLICE
HEAD OF INTEGRATED SERVICE COMMAND

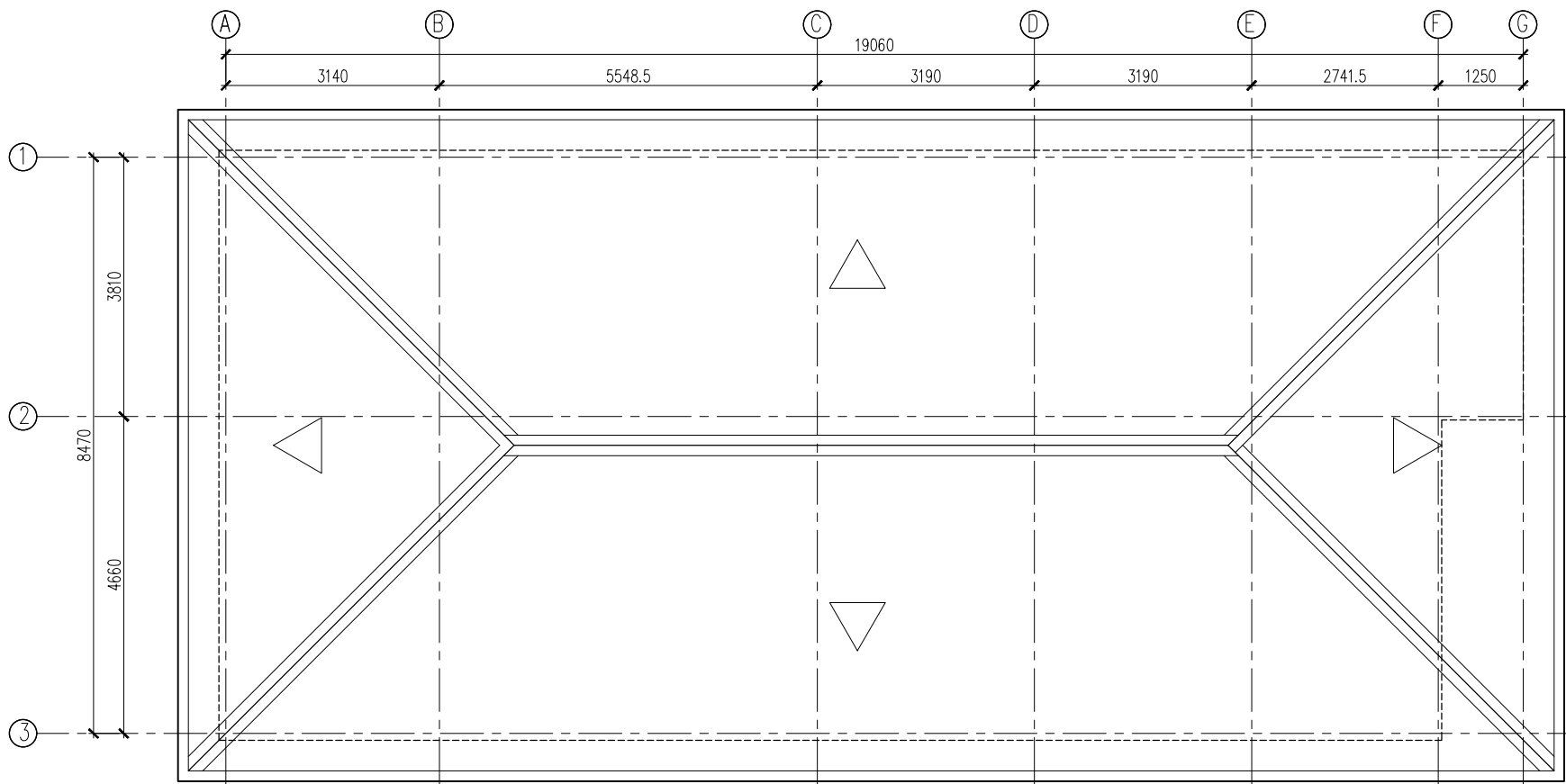
DESIGN APPROVED

ABDULLA NASEER
CHIEF INSPECTOR OF POLICE
HEAD OF FINANCE DEPARTMENT

APPROVED

ALI RASHEEDH
ASSISTANT COMMISSIONER OF POLICE
HEAD OF SERVICE SUPPORT DIRECTORATE

A01



ROOF PLAN
SCALE 1:100



MALDIVES POLICE SERVICE MALE',
REPUBLIC OF MALDIVES
FINANCE DEPARTMENT
INFRASTRUCTURE UNIT

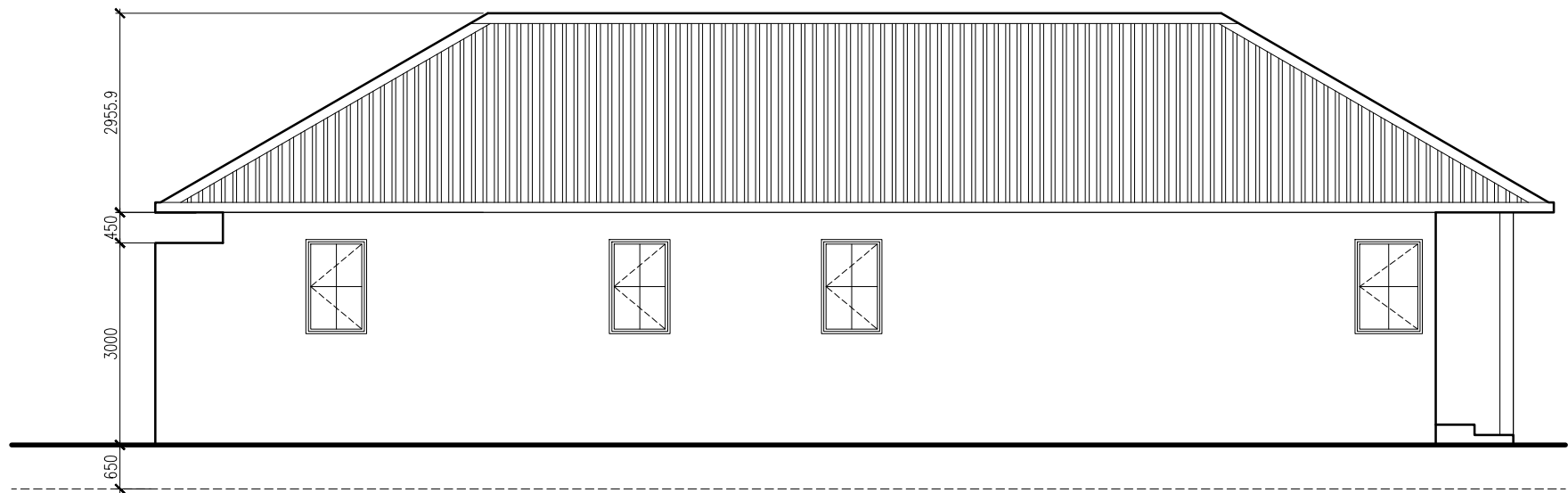
PROJECT: JUVENILE DETENTION (ARRESTATION FACILITY)

RECOMMENDATION APPROVED _____
MOHAMED JAMSHEED
ASSISTANT COMMISSIONER OF POLICE
HEAD OF INTEGRATED SERVICE COMMAND

DESIGN APPROVED _____
ABDULLA NASEER
CHIEF INSPECTOR OF POLICE
HEAD OF FINANCE DEPARTMENT

APPROVED _____
ALI RASHEEDH
ASSISTANT COMMISSIONER OF POLICE
HEAD OF SERVICE SUPPORT DIRECTORATE

A02



SIDE ELEVATION

SCALE 1:100



MALDIVES POLICE SERVICE MALE',
REPUBLIC OF MALDIVES
FINANCE DEPARTMENT
INFRASTRUCTURE UNIT

PROJECT: JUVENILE DETENTION (ARRESTATION FACILITY)

RECOMMENDATION APPROVED _____

MOHAMED JAMSHEED
ASSISTANT COMMISSIONER OF POLICE
HEAD OF INTEGRATED SERVICE COMMAND

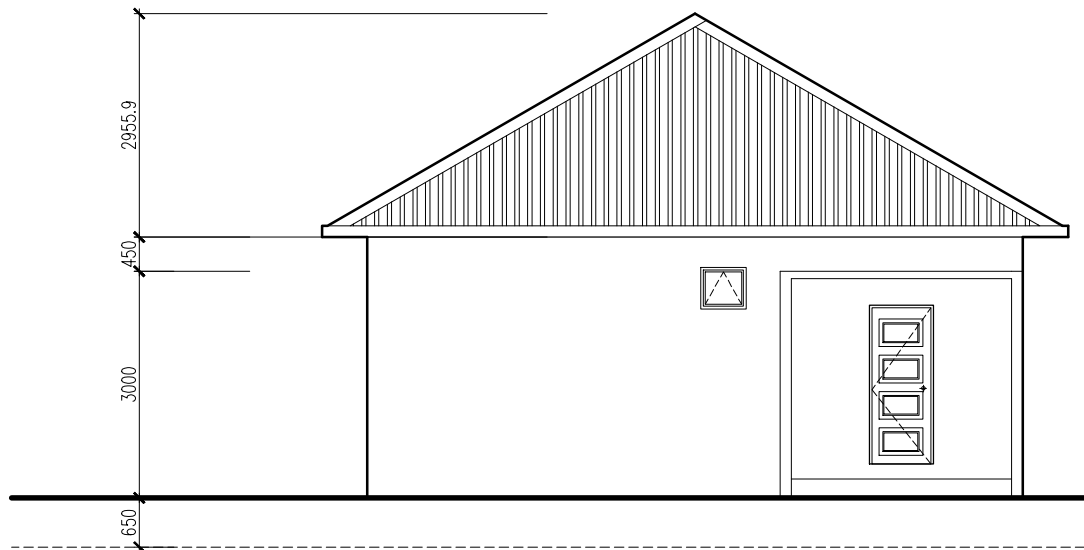
DESIGN APPROVED _____

ABDULLA NASEER
CHIEF INSPECTOR OF POLICE
HEAD OF FINANCE DEPARTMENT

APPROVED _____

ALI RASHEEDH
ASSISTANT COMMISSIONER OF POLICE
HEAD OF SERVICE SUPPORT DIRECTORATE

A03



BACK ELEVATION

SCALE 1:100



MALDIVES POLICE SERVICE MALE',
REPUBLIC OF MALDIVES
FINANCE DEPARTMENT
INFRASTRUCTURE UNIT

PROJECT: JUVENILE DETENTION (ARRESTATION FACILITY)

RECOMMENDATION APPROVED _____

MOHAMED JAMSHEED
ASSISTANT COMMISSIONER OF POLICE
HEAD OF INTEGRATED SERVICE COMMAND

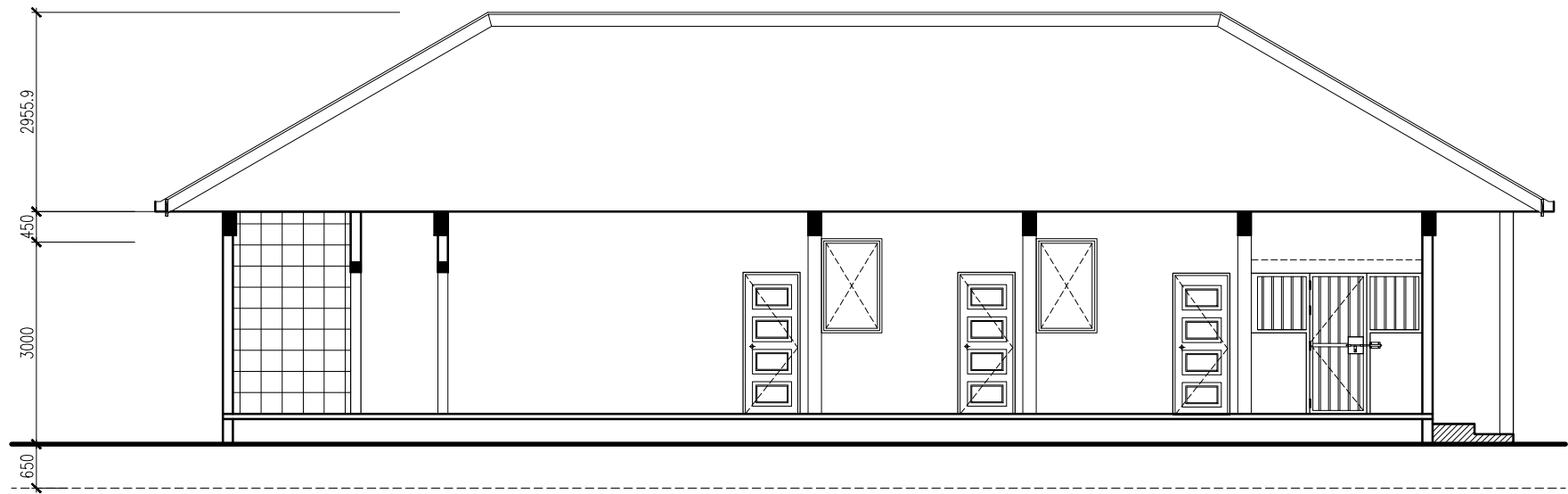
DESIGN APPROVED _____

ABDULLA NASEER
CHIEF INSPECTOR OF POLICE
HEAD OF FINANCE DEPARTMENT

APPROVED _____

ALI RASHEEDH
ASSISTANT COMMISSIONER OF POLICE
HEAD OF SERVICE SUPPORT DIRECTORATE

A04



SECTION X-X
SCALE 1:100



MALDIVES POLICE SERVICE MALE',
REPUBLIC OF MALDIVES
FINANCE DEPARTMENT
INFRASTRUCTURE UNIT

PROJECT: JUVENILE DETENTION (ARRESTATION FACILITY)

RECOMMENDATION APPROVED _____
MOHAMED JAMSHEED
ASSISTANT COMMISSIONER OF POLICE
HEAD OF INTEGRATED SERVICE COMMAND

DESIGN APPROVED _____
ABDULLA NASEER
CHIEF INSPECTOR OF POLICE
HEAD OF FINANCE DEPARTMENT

APPROVED _____
ALI RASHEEDH
ASSISTANT COMMISSIONER OF POLICE
HEAD OF SERVICE SUPPORT DIRECTORATE

A05

D01	AREA	-	D02	AREA	-	D03	AREA	-
	OPEN AREA	-		OPEN AREA	-		OPEN AREA	-
DESCRIPTION	DECORATIVE SOLID WOODEN DOOR		DESCRIPTION	DECORATIVE SOLID WOODEN DOOR		DESCRIPTION	DECORATIVE FIBER GLASS DOOR	
MATERIALS	SOLD WOOD,STAINLESS STEEL		MATERIALS	SOLID WOOD		MATERIALS	FIBER RESIN	
ACCESSORIES	<ul style="list-style-type: none"> - 5 NOS BEARING HINGE - MORTISE LOCK,PNEUMETIC DOOR CLOSER, - FLOOR FIX MAGNETIC DOOR STOPPER - BOTTOM SWEEP NYLON BRUSH 		ACCESSORIES	<ul style="list-style-type: none"> - 4 NOS BEARING HINGE - MORTISE LOCK,PNEUMETIC DOOR CLOSER, - FLOOR FIX MAGNETIC DOOR STOPPER - BOTTOM SWEEP NYLON BRUSH 		ACCESSORIES	<ul style="list-style-type: none"> - 4 NOS BEARING HINGE [WITH SS SCREWS] - KNOB LOCK, - FLOOR FIX MAGNETIC DOOR STOPPER 	
FINISHING	VERNISH		FINISHING	WHITE COLOR		FINISHING	WHITE COLOR	

1. CONFIRM ACTUAL MEASUREMENTS ON SITE BEFORE FABRICATION
2. SUBMIT ACCESSORIES SHOP DRAWINGS FOR APPROVAL
3. FOR DOOR SWING REFER FLOOR PLANES
4. INSTALL LINTEL BEAM ABOVE DOORS/WINDOWS NOT TOUCHING BEAM BOTTOM
5. INSTALL SILL BEAM BELOW WINDOWS
6. ALL DOOR/WINDOWS VIEWED FROM EXTERIOR

NGL= NATURAL GROUND LEVEL FFL= FINISHED FLOOR LEVEL FG= FIXED GLASS

WD=WOOD CG=CLEAR GLASS LW=LOUVERS

DOOR WINDOW SCHEDULE

SCALE 1:50



MALDIVES POLICE SERVICE MALE',
REPUBLIC OF MALDIVES
FINANCE DEPARTMENT
INFRASTRUCTURE UNIT

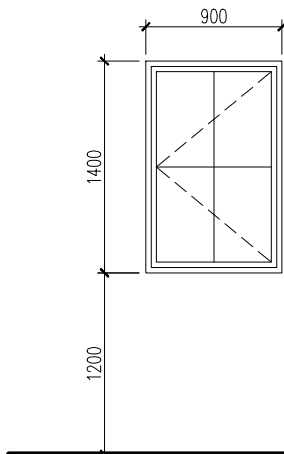
PROJECT: JUVENILE DETENTION (ARRESTATION FACILITY)

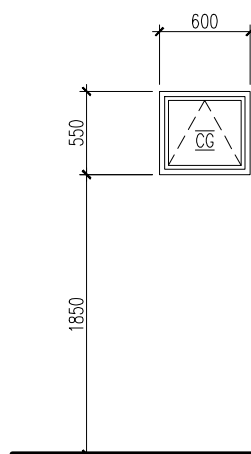
RECOMMENDATION APPROVED _____
MOHAMED JAMSHEED
ASSISTANT COMMISSIONER OF POLICE
HEAD OF INTEGRATED SERVICE COMMAND

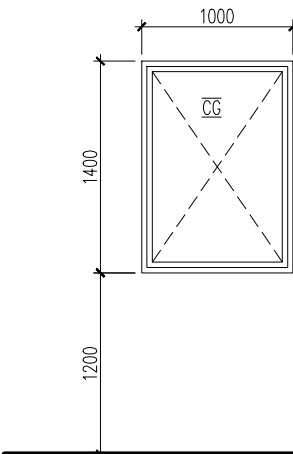
DESIGN APPROVED _____
ABDULLA NASEER
CHIEF INSPECTOR OF POLICE
HEAD OF FINANCE DEPARTMENT

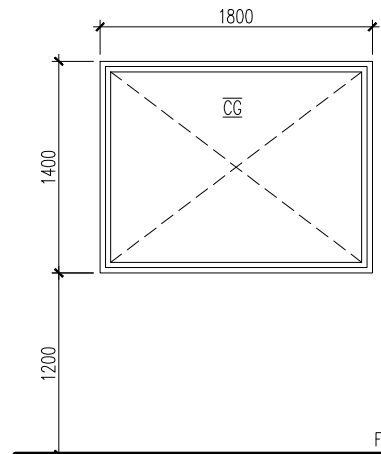
APPROVED _____
ALI RASHEEDH
ASSISTANT COMMISSIONER OF POLICE
HEAD OF SERVICE SUPPORT DIRECTORATE

A06

W1	AREA	-
	OPEN AREA	-
		
DESCRIPTION	SIDE HUNG WINDOW	
MATERIALS	ALUMINUM FRAME,GLASS	
ACCESSORIES	- WEATHER SEALING - DOOR LOCK, HANDLE AND HINGE	
FINISHING	POWDER COATED WHITE	

V01	AREA	-
	OPEN AREA	-
		
DESCRIPTION	TOP HUNG WINDOW	
MATERIALS	ALUMINUM FRAME,GLASS	
ACCESSORIES	- WEATHER SEALING - DOOR LOCK, HANDLE AND HINGE	
FINISHING	POWDER COATED WHITE	

FG	AREA	-
	OPEN AREA	-
		
DESCRIPTION	FIXED GLASS WINDOW	
MATERIALS	ALUMINUM FRAME,GLASS	
ACCESSORIES	- WEATHER SEALING - DOOR LOCK, HANDLE AND HINGE	
FINISHING	POWDER COATED WHITE	

FG	AREA	-
	OPEN AREA	-
		
DESCRIPTION	FIXED GLASS WINDOW	
MATERIALS	ALUMINUM FRAME,GLASS	
ACCESSORIES	- WEATHER SEALING - DOOR LOCK, HANDLE AND HINGE	
FINISHING	POWDER COATED WHITE	

1. CONFIRM ACTUAL MEASUREMENTS ON SITE BEFORE FABRICATION
 2. SUBMIT ACCESSORIES SHOP DRAWINGS FOR APPROVAL
 3. FOR DOOR SWING REFER FLOOR PLANES
 4. INSTALL LINTEL BEAM ABOVE DOORS/WINDOWS NOT TOUCHING BEAM BOTTOM
 5. INSTALL SILL BEAM BELOW WINDOWS
 6. ALL DOOR/WINDOWS VIEWED FROM EXTERIOR
- NGL= NATURAL GROUND LEVEL FFL= FINISHED FLOOR LEVEL FG= FIXED GLASS
WD=WOOD CG= CLEAR GLASS LW= LOUVERS

DOOR WINDOW SCHEDULE

SCALE 1:50



MALDIVES POLICE SERVICE MALE',
REPUBLIC OF MALDIVES
FINANCE DEPARTMENT
INFRASTRUCTURE UNIT

PROJECT: JUVENILE DETENTION (ARRESTATION FACILITY)

RECOMMENDATION APPROVED _____
MOHAMED JAMSHEED
ASSISTANT COMMISSIONER OF POLICE
HEAD OF INTEGRATED SERVICE COMMAND

DESIGN APPROVED _____
ABDULLA NASEER
CHIEF INSPECTOR OF POLICE
HEAD OF FINANCE DEPARTMENT

APPROVED _____
ALI RASHEEDH
ASSISTANT COMMISSIONER OF POLICE
HEAD OF SERVICE SUPPORT DIRECTORATE

A07

GD	AREA	-
	OPEN AREA	-
DESCRIPTION	GRILL JAIL DOOR	
MATERIALS	G.I. FRAME AND G.I PIPE	
ACCESSORIES	<ul style="list-style-type: none"> - 5NOS GATE HINGE, LOCKING MECHANISM - FIXING STUDS/HOOKS EMBEDDED INTO ADJACENT COLUMNS, LINTELS AND WALLS 	
FINISHING	POWDER COATED WHITE	

1. CONFIRM ACTUAL MEASUREMENTS ON SITE BEFORE FABRICATION
 2. SUBMIT ACCESSORIES SHOP DRAWINGS FOR APPROVAL
 3. FOR DOOR SWING REFER FLOOR PLANES
 4. INSTALL LINTEL BEAM ABOVE DOORS/WINDOWS NOT TOUCHING BEAM BOTTOM
 5. INSTALL SILL BEAM BELOW WINDOWS
 6. ALL DOOR/WINDOWS VIEWED FROM EXTERIOR
- NGL= NATURAL GROUND LEVEL FFL= FINISHED FLOOR LEVEL FG= FIXED GLASS
WD=WOOD CG=CLEAR GLASS LW=LOUVERS

DOOR WINDOW SCHEDULE

SCALE 1:50

	AREA	-
	OPEN AREA	-
DESCRIPTION	CONTROL ACCESS DOOR SYSTEM	
MATERIALS	ALUMINUM SHUTTER, FIBER GLASS DOOR	
ACCESSORIES	<ul style="list-style-type: none"> - DOOR: LOCK, HANDLE, SS BEARING HINGE, PNEUMATIC DOOR CLOSER - SHUTTER DOOR: LOCK, HANDLE AND HINGE, ELECTRONIC CLOSING MECHANISM - BOTH DOORS MUST HAVE ELECTRONIC CONTROL ACCESS SYSTEM INSTALLED - BOTH DOORS MUST BE EXTERIOR-GRADE 	
FINISHING	-WHITE COLOR	



MALDIVES POLICE SERVICE MALE',
REPUBLIC OF MALDIVES
FINANCE DEPARTMENT
INFRASTRUCTURE UNIT

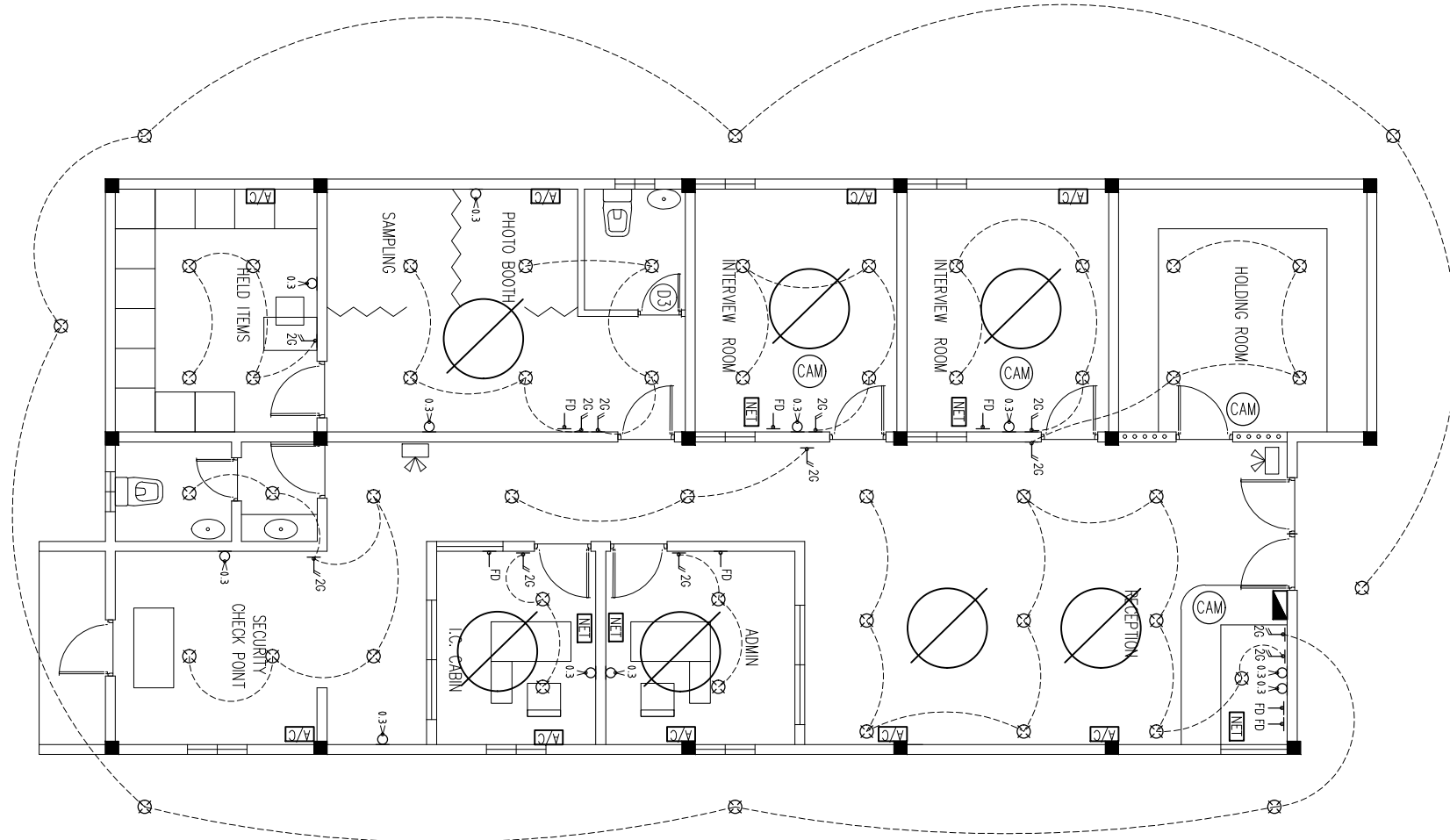
PROJECT: JUVENILE DETENTION (ARRESTATION FACILITY)

RECOMMENDATION APPROVED
MOHAMED JAMSEED
ASSISTANT COMMISSIONER OF POLICE
HEAD OF INTEGRATED SERVICE COMMAND

DESIGN APPROVED
ABDULLA NASEER
CHIEF INSPECTOR OF POLICE
HEAD OF FINANCE DEPARTMENT

APPROVED
ALI RASHEEDH
ASSISTANT COMMISSIONER OF POLICE
HEAD OF SERVICE SUPPORT DIRECTORATE

A08



ELECTRICAL PLAN

SCALE 1:100

[A/C] - AIR CONDITIONER [15A SOCKET AT 2.4M]

[DB] - DISTRIBUTION BOARD

[NET] - INTERNET/INTRA POINT

⊗ - CEILING RECESSED DOWN LIGHT
[WEATHER PROOF IF OUTDOOR]

(CAM) - CEILING MOUNT ANTI VANDAL CCTV
[WITH ALL ACCESSORIES]

⏏ - 1HR NON MAINTAINED EMERGENCY LIGHT

0.3 > - 2GANG POWER SOCKET AT 0.3M

⏏ - FAN DIMMER SWITCH

2G > - 2GANG SWITCH

⊗ - CEILING MOUNT FAN



MALDIVES POLICE SERVICE MALE',
REPUBLIC OF MALDIVES
FINANCE DEPARTMENT
INFRASTRUCTURE UNIT

PROJECT: JUVENILE DETENTION (ARRESTATION FACILITY)

RECOMMENDATION APPROVED _____

MOHAMED JAMSHEED
ASSISTANT COMMISSIONER OF POLICE
HEAD OF INTEGRATED SERVICE COMMAND

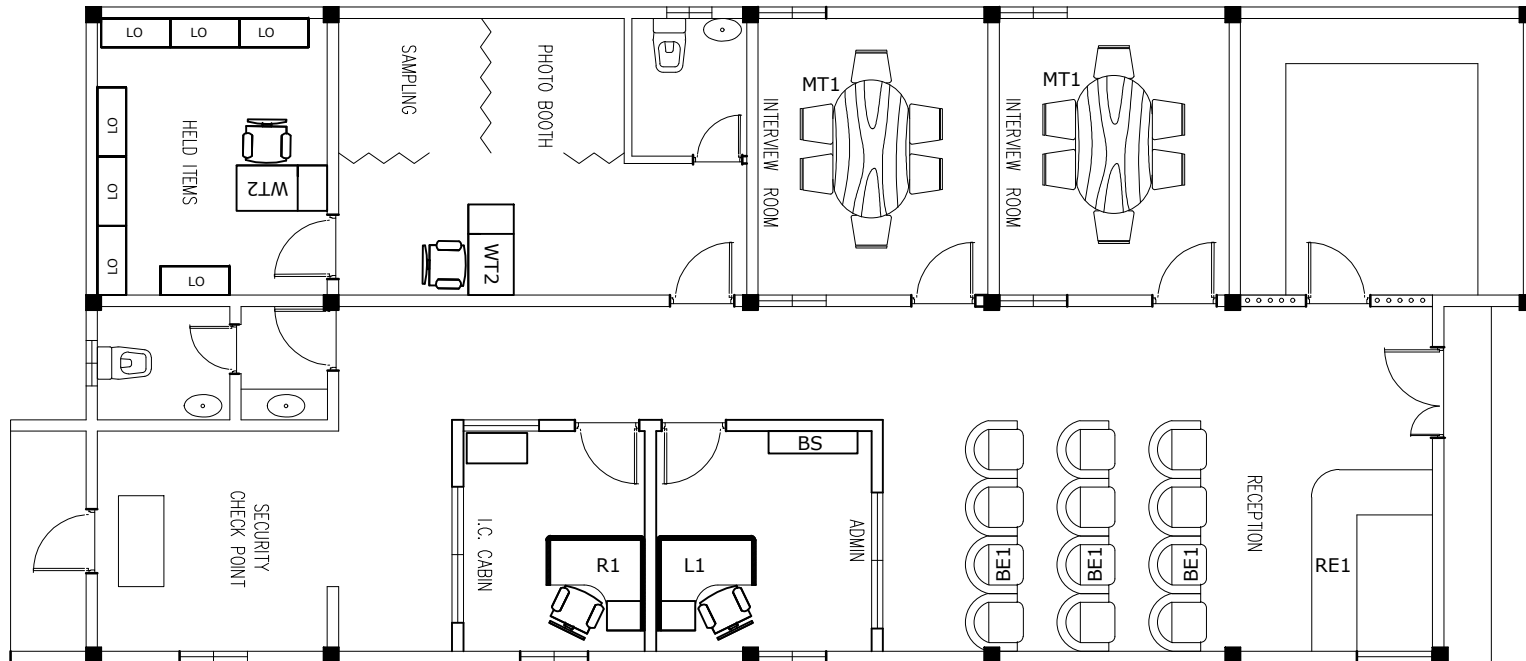
DESIGN APPROVED _____

ABDULLA NASEER
CHIEF INSPECTOR OF POLICE
HEAD OF FINANCE DEPARTMENT

APPROVED _____

ALI RASHEEDH
ASSISTANT COMMISSIONER OF POLICE
HEAD OF SERVICE SUPPORT DIRECTORATE

E01



FURNITURE PLAN

SCALE 1:100



MALDIVES POLICE SERVICE MALE',
REPUBLIC OF MALDIVES
FINANCE DEPARTMENT
INFRASTRUCTURE UNIT

PROJECT: JUVENILE DETENTION (ARRESTATION FACILITY)

RECOMMENDATION APPROVED _____

MOHAMED JAMSHEED
ASSISTANT COMMISSIONER OF POLICE
HEAD OF INTEGRATED SERVICE COMMAND

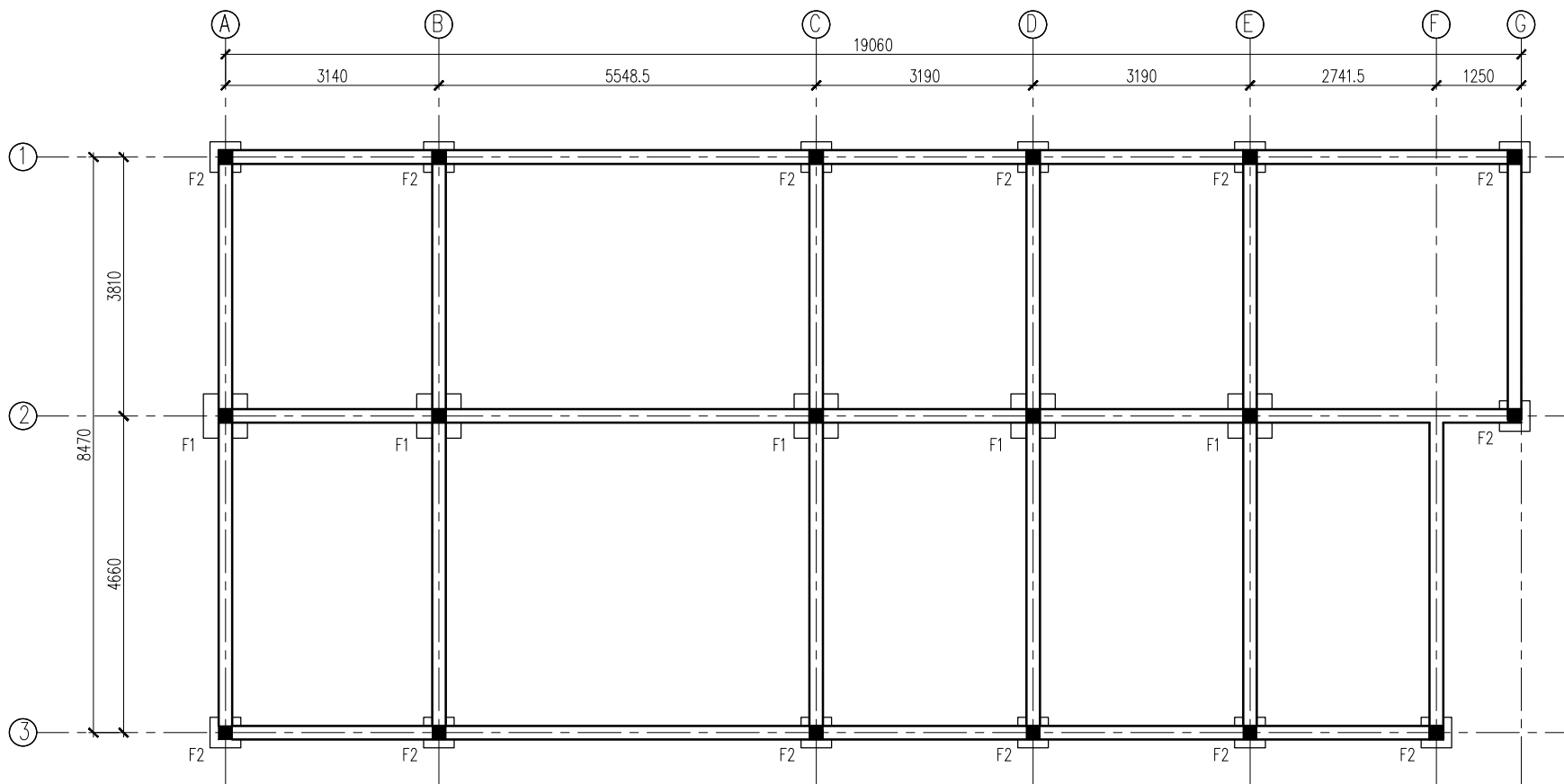
DESIGN APPROVED _____

ABDULLA NASEER
CHIEF INSPECTOR OF POLICE
HEAD OF FINANCE DEPARTMENT

APPROVED _____

ALI RASHEEDH
ASSISTANT COMMISSIONER OF POLICE
HEAD OF SERVICE SUPPORT DIRECTORATE

E02



FOUNDATION PLAN

SCALE 1:100



MALDIVES POLICE SERVICE MALE',
REPUBLIC OF MALDIVES
FINANCE DEPARTMENT
INFRASTRUCTURE UNIT

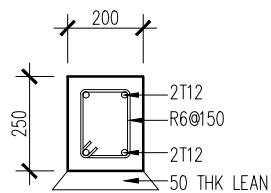
PROJECT: JUVENILE DETENTION (ARRESTATION FACILITY)

RECOMMENDATION APPROVED _____
MOHAMED JAMSHEED
ASSISTANT COMMISSIONER OF POLICE
HEAD OF INTEGRATED SERVICE COMMAND

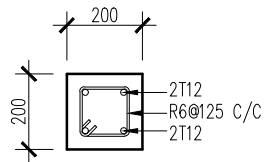
DESIGN APPROVED _____
ABDULLA NASEER
CHIEF INSPECTOR OF POLICE
HEAD OF FINANCE DEPARTMENT

APPROVED _____
ALI RASHEEDH
ASSISTANT COMMISSIONER OF POLICE
HEAD OF SERVICE SUPPORT DIRECTORATE

S01



GB

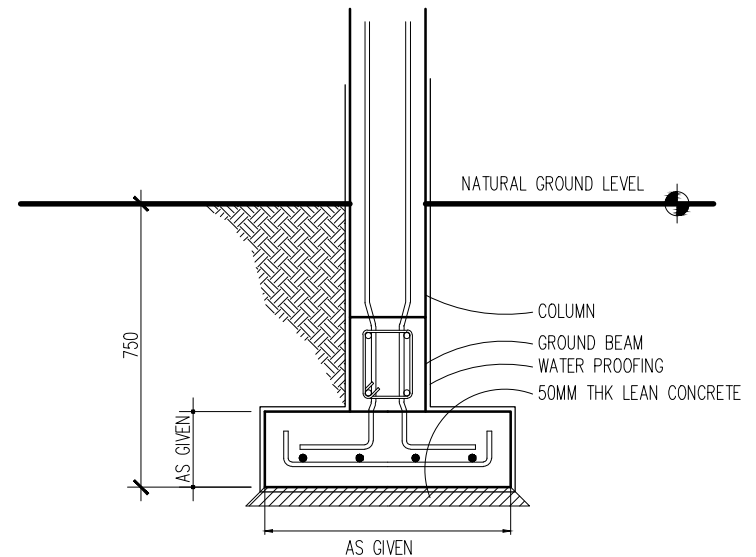


C2

TYPE	DIMENSIONS	REINFORCEMENT
F1	650MM x 650MM x 200MM	T12@250 C/C B/W (BOTTOM)
F2	450MM x 450MM x 200MM	T10@175 C/C B/W (BOTTOM)
FOUNDATION DEPTH = - 750 MM [BELOW GROUND]		

FOUNDATION DETAIL

SCALE 1:20



TYPICAL PAD FOOTING DETAIL

SCALE 1:20



MALDIVES POLICE SERVICE MALE',
REPUBLIC OF MALDIVES
FINANCE DEPARTMENT
INFRASTRUCTURE UNIT

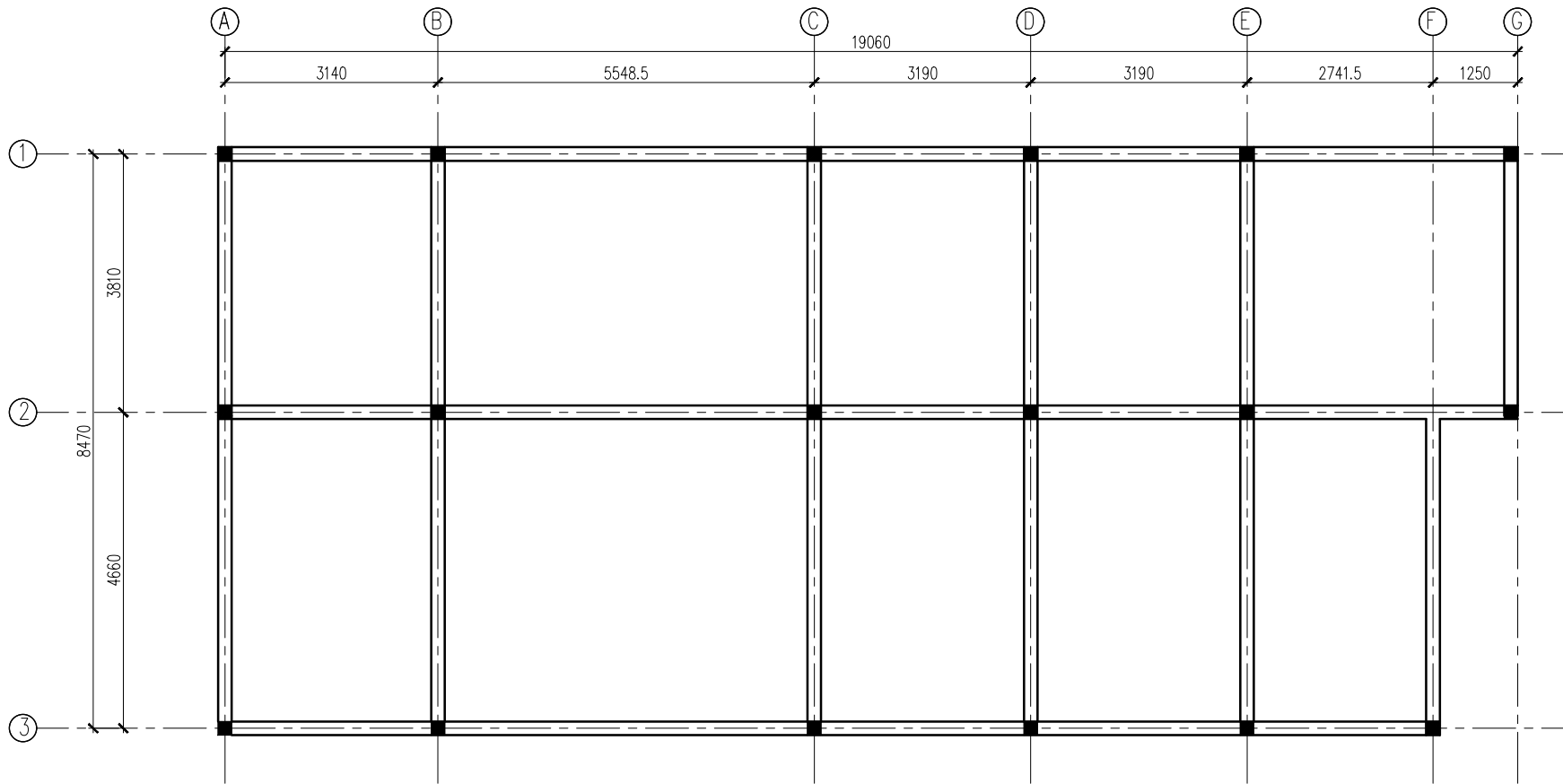
PROJECT: JUVENILE DETENTION (ARRESTATION FACILITY)

RECOMMENDATION APPROVED
MOHAMED JAMSHEED
ASSISTANT COMMISSIONER OF POLICE
HEAD OF INTEGRATED SERVICE COMMAND

DESIGN APPROVED
ABDULLA NASEER
CHIEF INSPECTOR OF POLICE
HEAD OF FINANCE DEPARTMENT

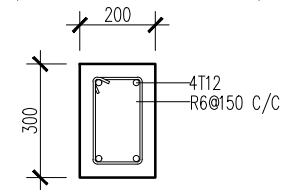
APPROVED
ALI RASHEEDH
ASSISTANT COMMISSIONER OF POLICE
HEAD OF SERVICE SUPPORT DIRECTORATE

S02



ROOF BEAM PLAN

SCALE 1:100



ROOF BEAMS



MALDIVES POLICE SERVICE MALE',
REPUBLIC OF MALDIVES
FINANCE DEPARTMENT
INFRASTRUCTURE UNIT

PROJECT: JUVENILE DETENTION (ARRESTATION FACILITY)

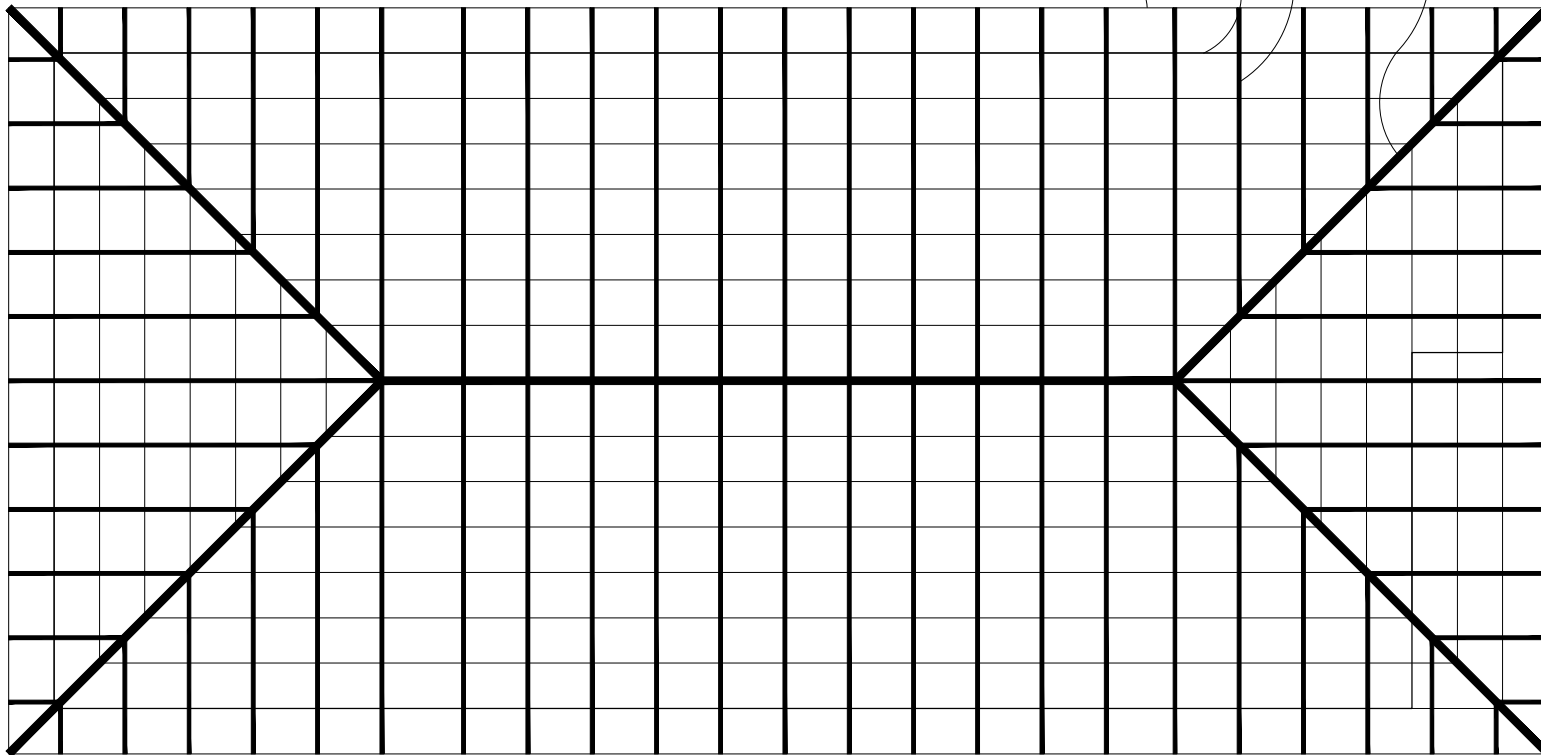
RECOMMENDATION APPROVED _____
MOHAMED JAMSHEED
ASSISTANT COMMISSIONER OF POLICE
HEAD OF INTEGRATED SERVICE COMMAND

DESIGN APPROVED _____
ABDULLA NASEER
CHIEF INSPECTOR OF POLICE
HEAD OF FINANCE DEPARTMENT

APPROVED _____
ALI RASHEEDH
ASSISTANT COMMISSIONER OF POLICE
HEAD OF SERVICE SUPPORT DIRECTORATE

S03

WOODEN RAFTERS 150X50@850 C/C
WOODEN RAFTERS 50X50@600 C/C
WOODEN FASCIA BOARD 35X250
RIDGE BEAM 50X175



ROOF STRUCTURE
SCALE 1:100



MALDIVES POLICE SERVICE MALE',
REPUBLIC OF MALDIVES
FINANCE DEPARTMENT
INFRASTRUCTURE UNIT

PROJECT: JUVENILE DETENTION (ARRESTATION FACILITY)

RECOMMENDATION APPROVED _____
MOHAMED JAMSHEED
ASSISTANT COMMISSIONER OF POLICE
HEAD OF INTEGRATED SERVICE COMMAND

DESIGN APPROVED _____
ABDULLA NASEER
CHIEF INSPECTOR OF POLICE
HEAD OF FINANCE DEPARTMENT

APPROVED _____
ALI RASHEEDH
ASSISTANT COMMISSIONER OF POLICE
HEAD OF SERVICE SUPPORT DIRECTORATE

S04