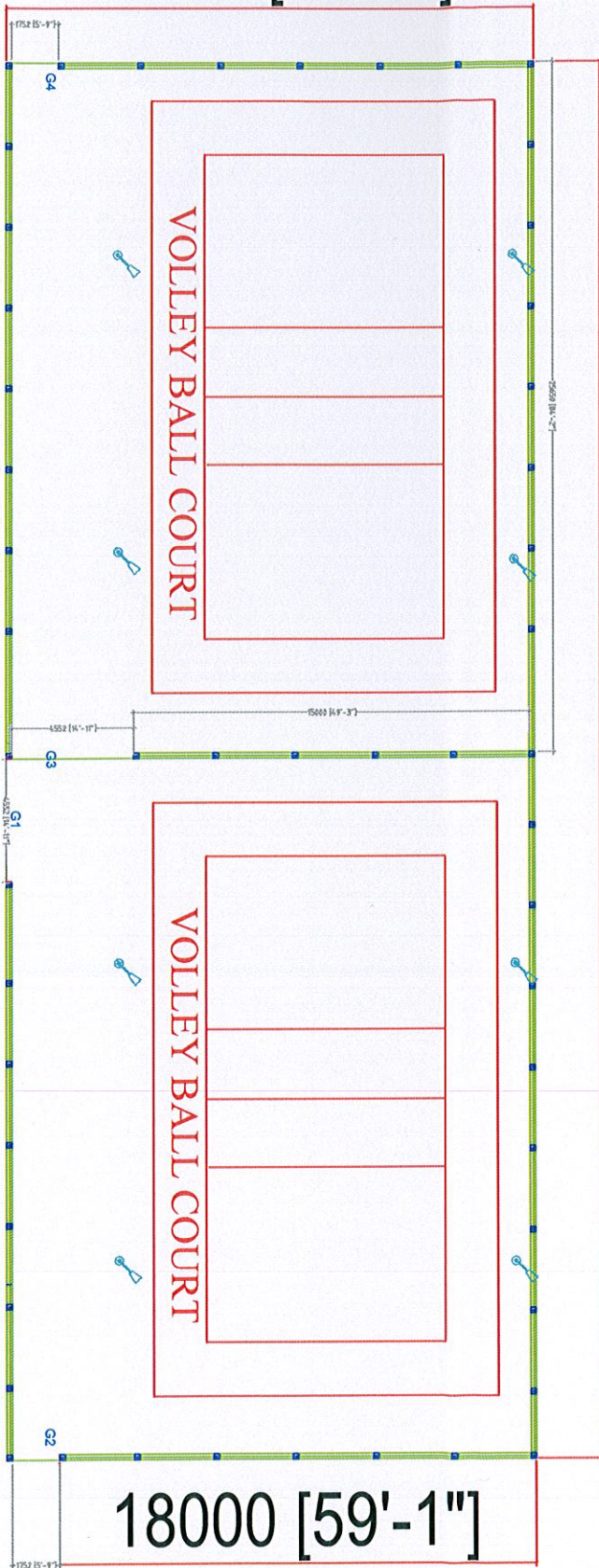


19952 [65'-6"]

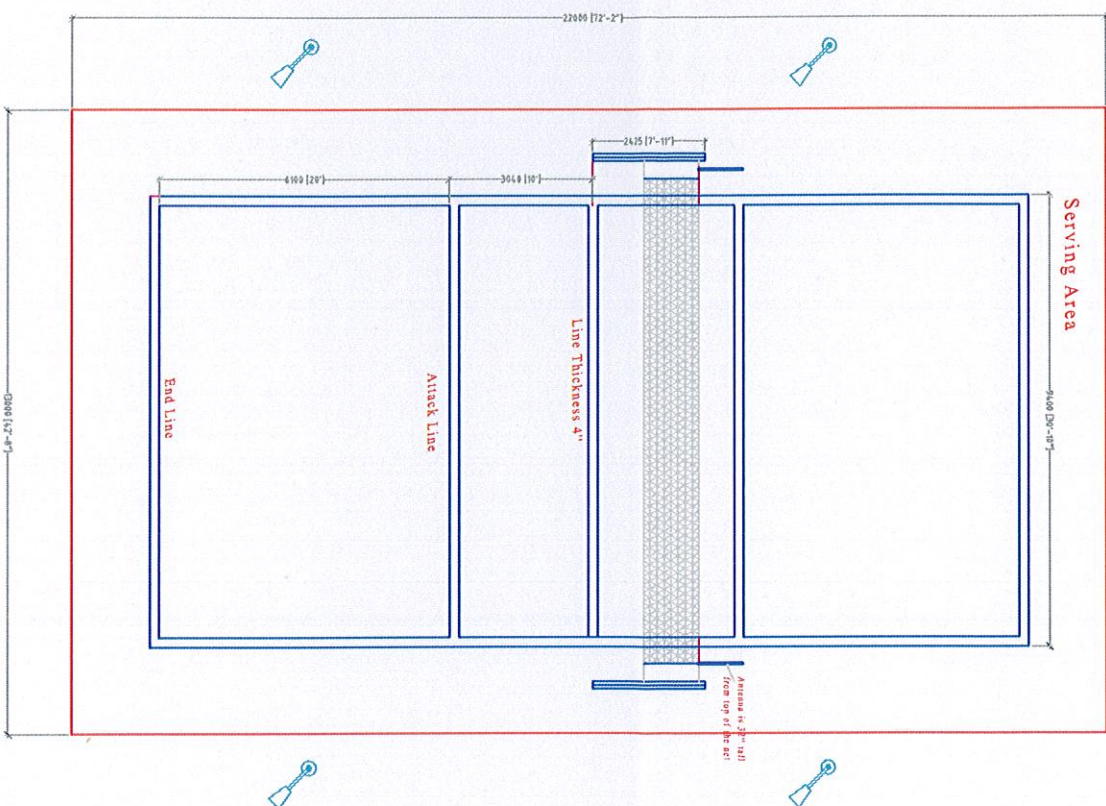
51850 [170'-1"]



VOLLEY BALL COURT FLOOR PLAN  
Scale - 1:250



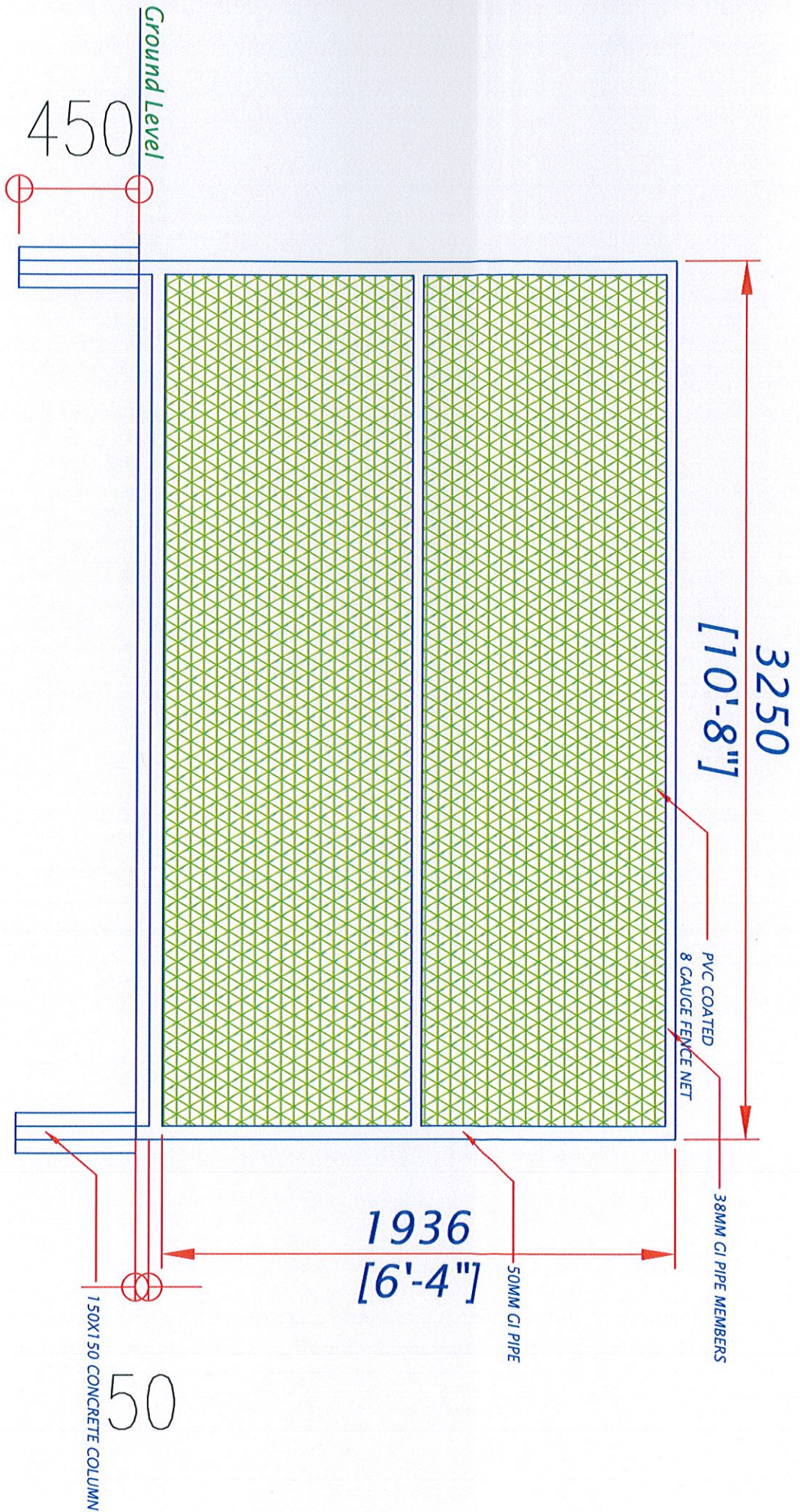




# **VOLLEY BALL COURT TOP VIEW** Scale - 1:150



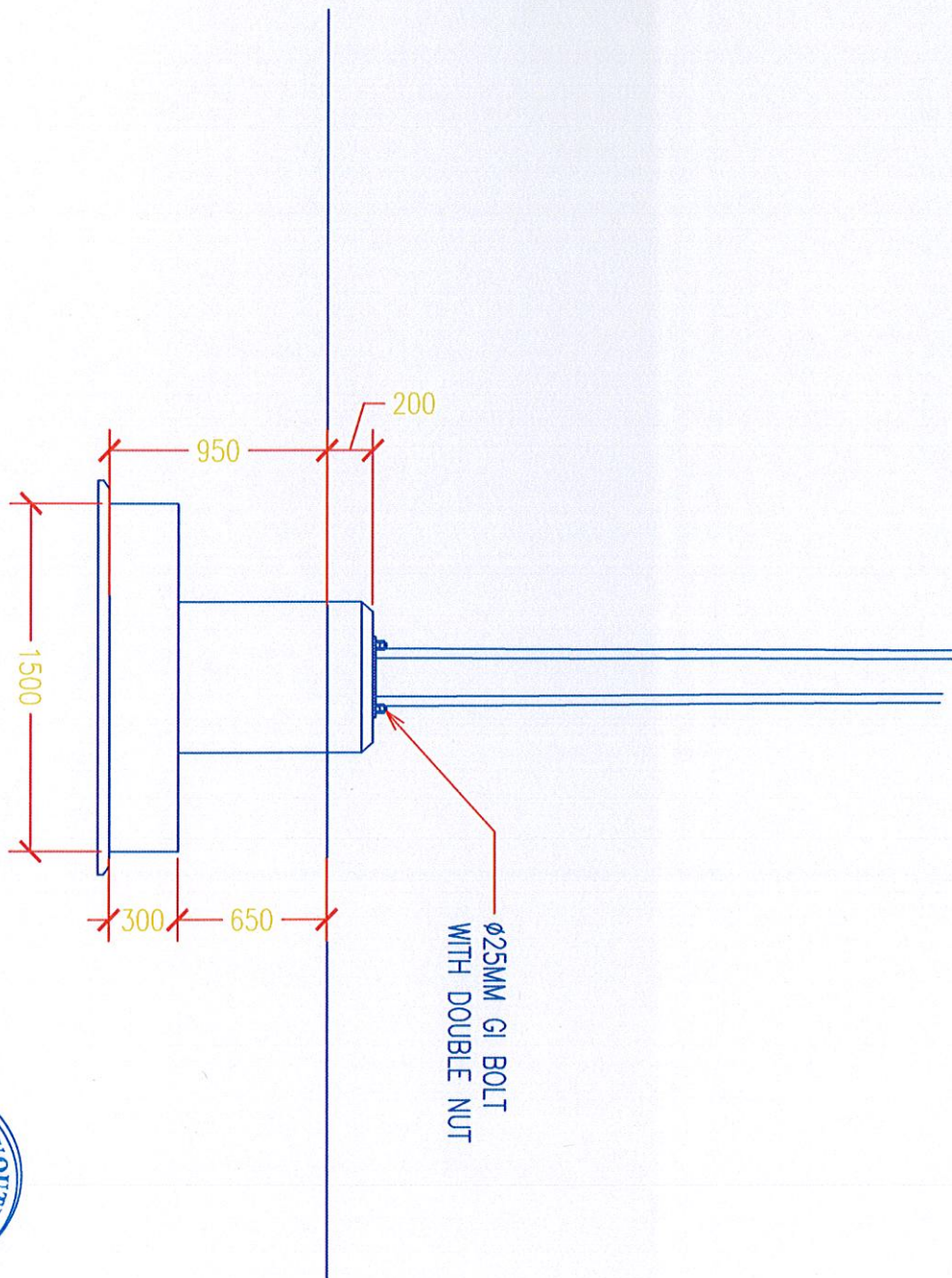




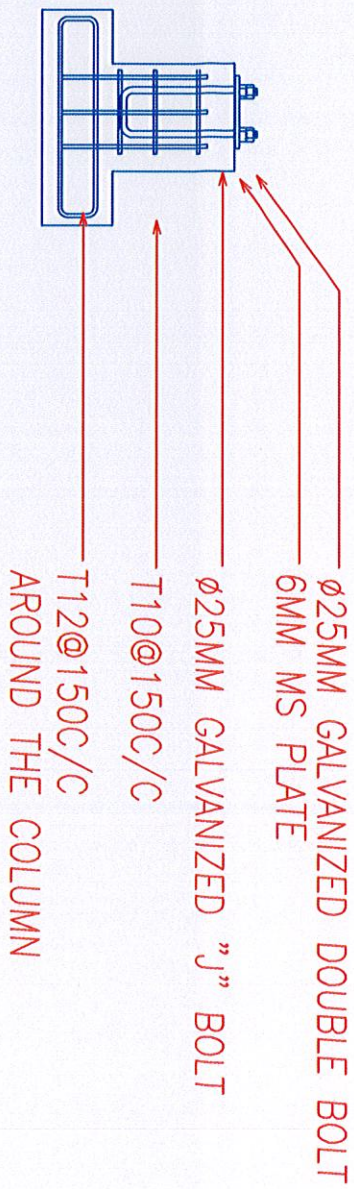
**DETAIL-PVC FENCE**  
Scale - 1:20







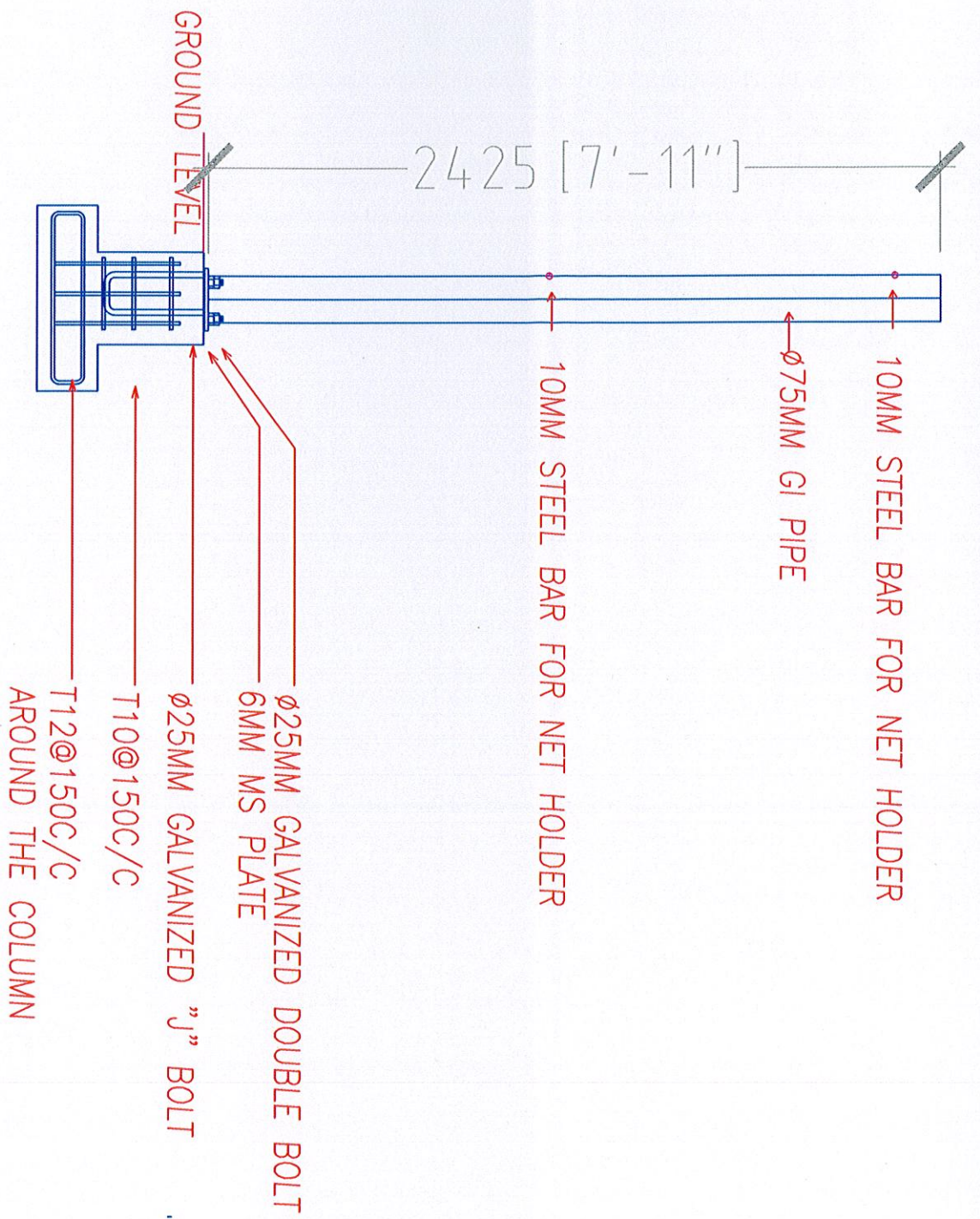




Volley Post  
Concrete Base  
Scale 1:20







Volley Post  
Concrete Base with post  
Scale 1:20









1000 LBS/FT (1000 LBS/FT)

