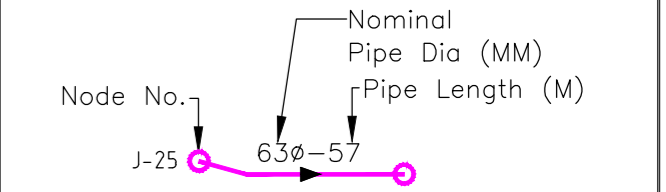





EXISTING CATCHMENTS AREA		
Rooftop details	RT	Area (Ha)
Maduvaree Health Centre	RT-1	0.0211
Maduvaree Stadium roof	RT-10	0.0078
Court	RT-2	0.0085
MASJIDHUL AMAANA MOSQUE	RT-3	0.0264
Pre school_Maduvaree	RT-4	0.0108
Council Office	RT-5	0.0086
Masjid Ulla Mosque	RT-6	0.0464
Maduvaree School-BCDEF	RT-7	0.0718
Maduvaree School-A	RT-8	0.0199
Maduvaree Police station	RT-9	0.0120
Total		0.2333

	BOUNDARY
	ROAD
	PROPOSED RAIN WATER CONVEYANCE SYSTEM
	SLUICE VALVE
	SCOUR VALVE
	WTP
	CATCHMENT ROOF



No.	DATE	DESCRIPTION	DRAWING No.	DESCRIPTION	
REVISION			REFERENCE DRAWINGS		

	MINISTRY OF ENVIRONMENT AND ENERGY MALE REPUBLIC OF MALDIVES			
	PROJECT CONSULTANCY SERVICES FOR DESIGN AND SUPERVISION OF WATER SUPPLY FACILITIES IN THE ISLAND R. MADUVUVAAREE, MALDIVES			
TITLE KEY PLAN OF PROPOSED RAIN WATER CONVEYANCE SYSTEM				
 SHAH TECHNICAL CONSULTANTS PVT. LTD., INDIA In Association With  DEVELOPMENT TECHNOLOGIES MALDIVES, MALDIVES				
APPROVED	CHECKED	DESIGNED	DRAWN	
SSS	SSS	SPP	PDP	
SCALE 1:1,000	DATE NOV 2017	DRAWING NUMBER R.MaduvuVaree/WS/04		REVISION 0