



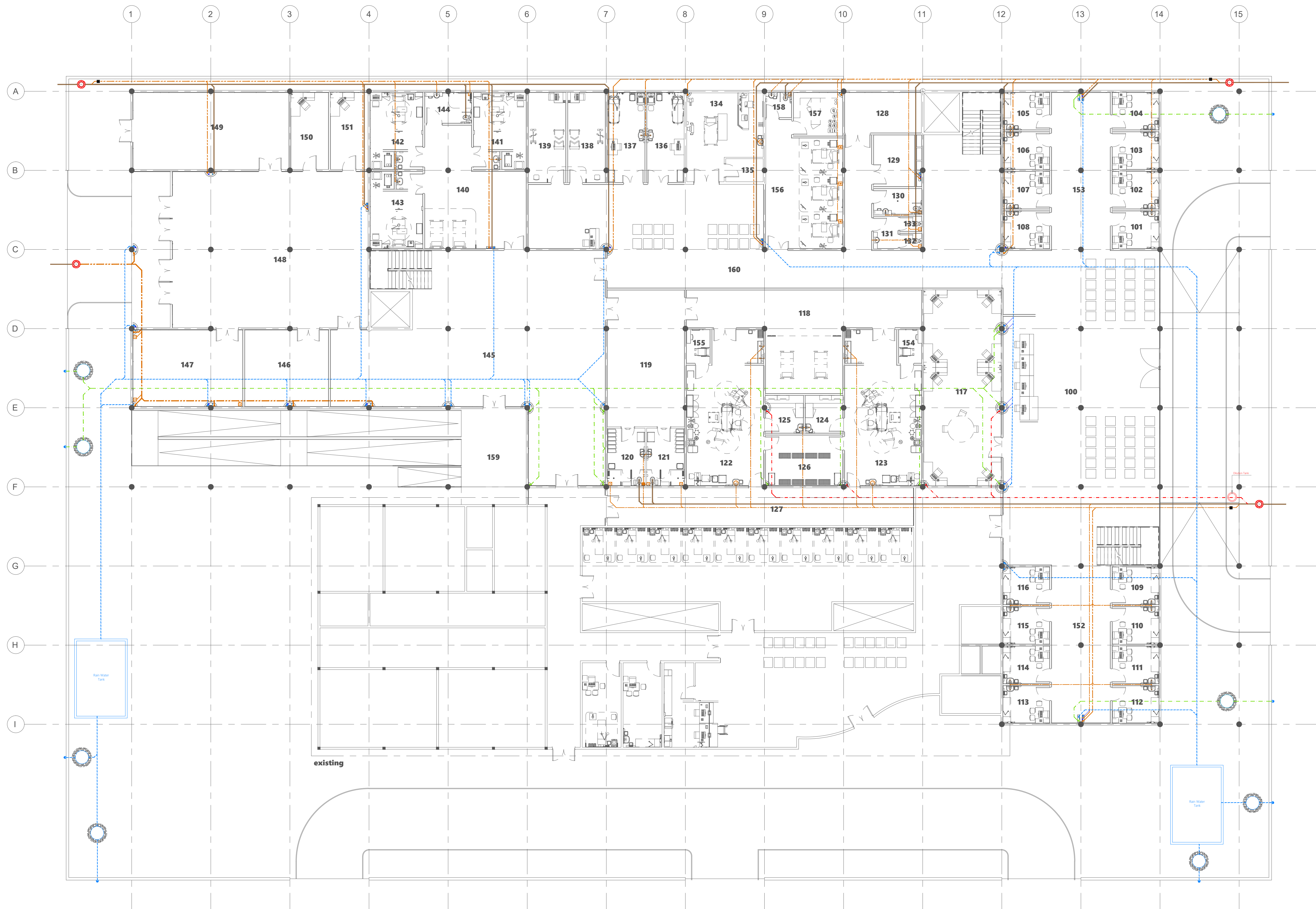
- Legend**
- 160 Cold Water Supply To Basin Faucet
 - 160 Cold Water Supply To Wall Tap
 - 160 Cold Water Supply To Sink Tap
 - 160 Cold Water Supply To Bidet Shower
 - 160 Cold Water Supply To Column
 - 160 Cold Water Supply & 150 Hot Water Supply To Shower Mixer
 - 160 Cold Water Supply & 150 Hot Water Supply To Basin Mixer Faucet
 - 200 Cold Water Supply & 150 Hot Water Supply To Bidet Mixer
 - 160 Cold Water Supply & 150 Hot Water Supply To Scrub Sink
 - Cold Water
 - Drop In Wall
 - Rise In Wall
 - 250 Cold Water Supply Pipes Running Underground
 - 200 Cold Water Supply Pipes Running In Wall
 - 200 Cold Water Supply Pipes Running Above False Ceiling
 - 160 Hot Water Supply (HWS) Pipes
 - 250 Hot Water Supply (HWS) Pipes
 - 250 Hot Water Supply Pipes
 - 200 Floor Standing Water Heater
 - 100 Wall-Hung Water Heater
 - 400 Hot Water Supply Pipes Running Underground
 - 150 Hot Water Supply Pipes Running In Wall
 - 150 Hot Water Supply Pipes Running Above False Ceiling
- Notes:**
- All Cold Water Pipes Should Be PVC
 - All Hot Water Pipes Should Be PPR

PROPOSED 03 STOREY BUILDING AT
**B. EYDHAFUSHI
HOSPITAL**

Client:
**MINISTRY OF HEALTH,
MALDIVES**

December 2019
Services By: Hussain Rasheed
Checked By: Mohamed Rassam
Drawn By: Hussain Rasheed

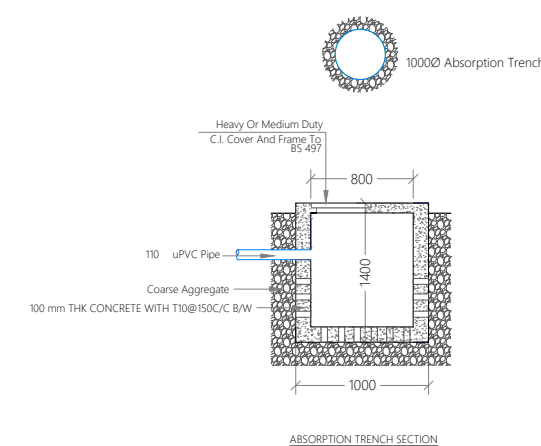




- Legend**
- Floor Drain
 - Floor Gully
 - 820 Stub For Washing Machine Or Tub
 - 1100 Soil Pipe (uPVC Pipe)
 - 1100 Soil Vent Pipe (uPVC Pipe)
 - 820 Waste Pipe (uPVC Pipe)
 - 820 Waste Vent Pipe (uPVC Pipe)
 - 400 Waste Pipe (uPVC Pipe)
 - 1100 Waste Pipe For Laundry (uPVC Pipe)
 - 630 Manhole Vent Pipe (uPVC Pipe)
 - 1100 Rain Water Pipes (uPVC Pipe)
 - 1100 Waste Pipes From Green Areas (uPVC Pipe)
 - 820 Lab Waste Pipe (CPVC Pipe)
 - 820 Lab Waste Vent Pipe (CPVC Pipe)
 - 900 Stub For Bed Pan Washer
 - 900 Stub For Dialysis Machine With Removable Cap
 - Manhole
 - Gully Trap
 - 1100 Rainwater Outlet Perforated Cowl
 - 1100 Rainwater Outlet
 - Bottle Trap

Notes :-

- All Drainage Pipes Should Have At A Slope Of 1/150
- All Floor Drains Should Have 'P' Traps



PROPOSED 03 STOREY BUILDING AT
B. EYDHAFUSHI HOSPITAL

Client:
**MINISTRY OF HEALTH,
MALDIVES**

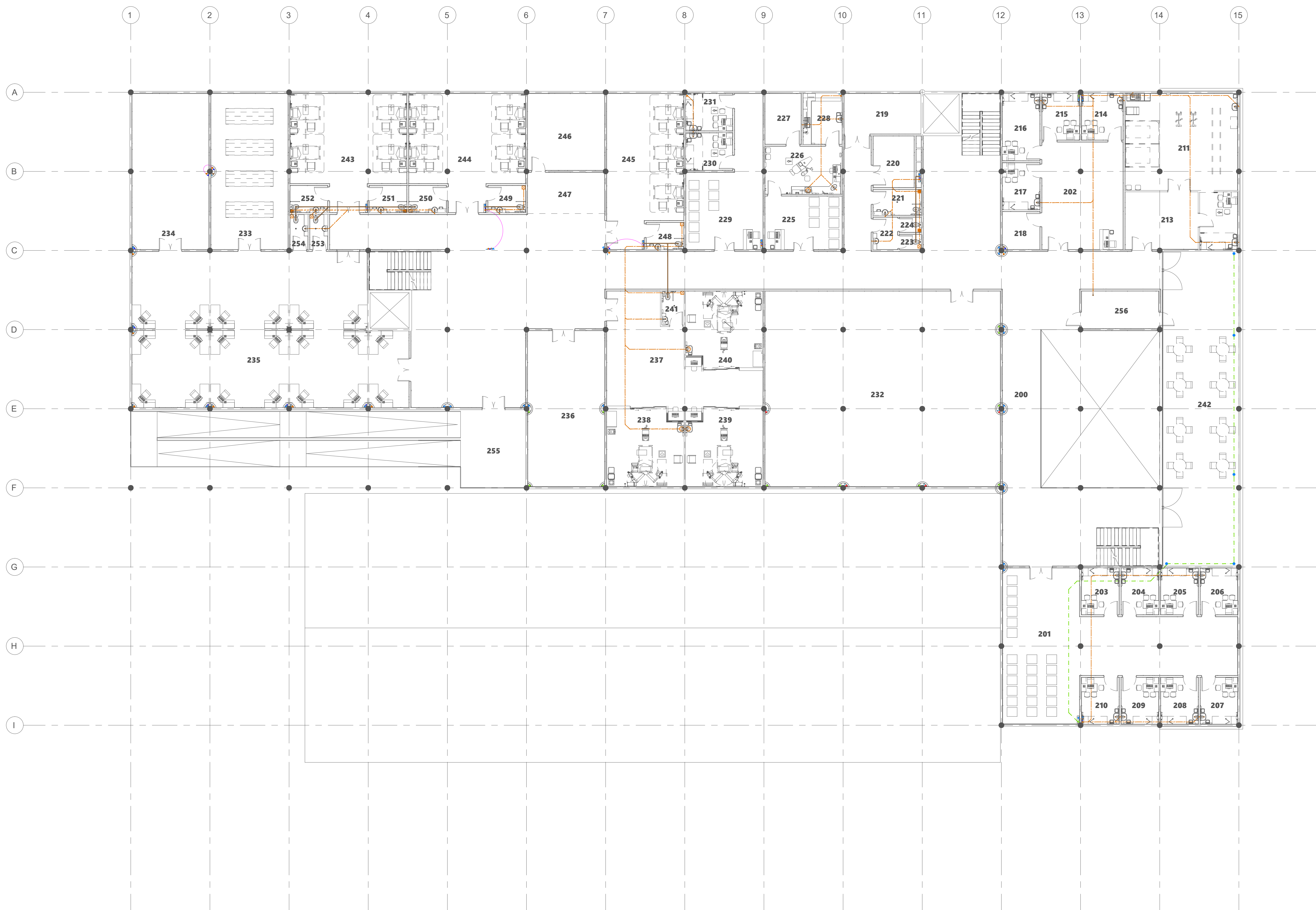
December 2019
Services By: Hussain Rasheed
Checked By: Mohamed Rassam
Drawn By: Hussain Rasheed



+960 333 3288 ■ info@epoch.asso.ve
www.epoch.asso.ve ■ 11, Independence
Road, Malé, Maldives ■ Page

Rev: _____
Date: _____
Page: _____

DR-01



- Legend
- Floor Drain
 - 820 Stub For Washing Machine Or Tub
 - 1100 Soil Pipe (uPVC Pipe)
 - 1100 Soil Vent Pipe (uPVC Pipe)
 - 820 Waste Pipe (uPVC Pipe)
 - 820 Waste Vent Pipe (uPVC Pipe)
 - 400 Waste Pipe (uPVC Pipe)
 - 1100 Waste Pipe For Laundry (uPVC Pipe)
 - 630 Manhole Vent Pipe (uPVC Pipe)
 - 1100 Rain Water Pipes (uPVC Pipe)
 - 1100 Waste Pipes From Green Areas (uPVC Pipe)
 - 820 Lab Waste Pipe (CPVC Pipe)
 - 820 Lab Waste Vent Pipe (CPVC Pipe)
 - 900 Stub For Bed Pan Washer
 - 900 Stub For Dialysis Machine With Removable Cap
 - Manhole
 - Gully Trap
 - 1100 Rainwater Outlet Perforated Cowl
 - 1100 Rainwater Outlet
 - Bottle Trap

Notes :-

- All Drainage Pipes Should Have At A Slope Of 1/150
- All Floor Drains Should Have 'P' Traps

PROPOSED 03 STOREY BUILDING AT
**B. EYDHAFUSHI
HOSPITAL**

Client:
**MINISTRY OF HEALTH,
MALDIVES**

December 2019
Services By: Hussain Rasheed
Checked By: Mohamed Rassam
Drawn By: Hussain Rasheed

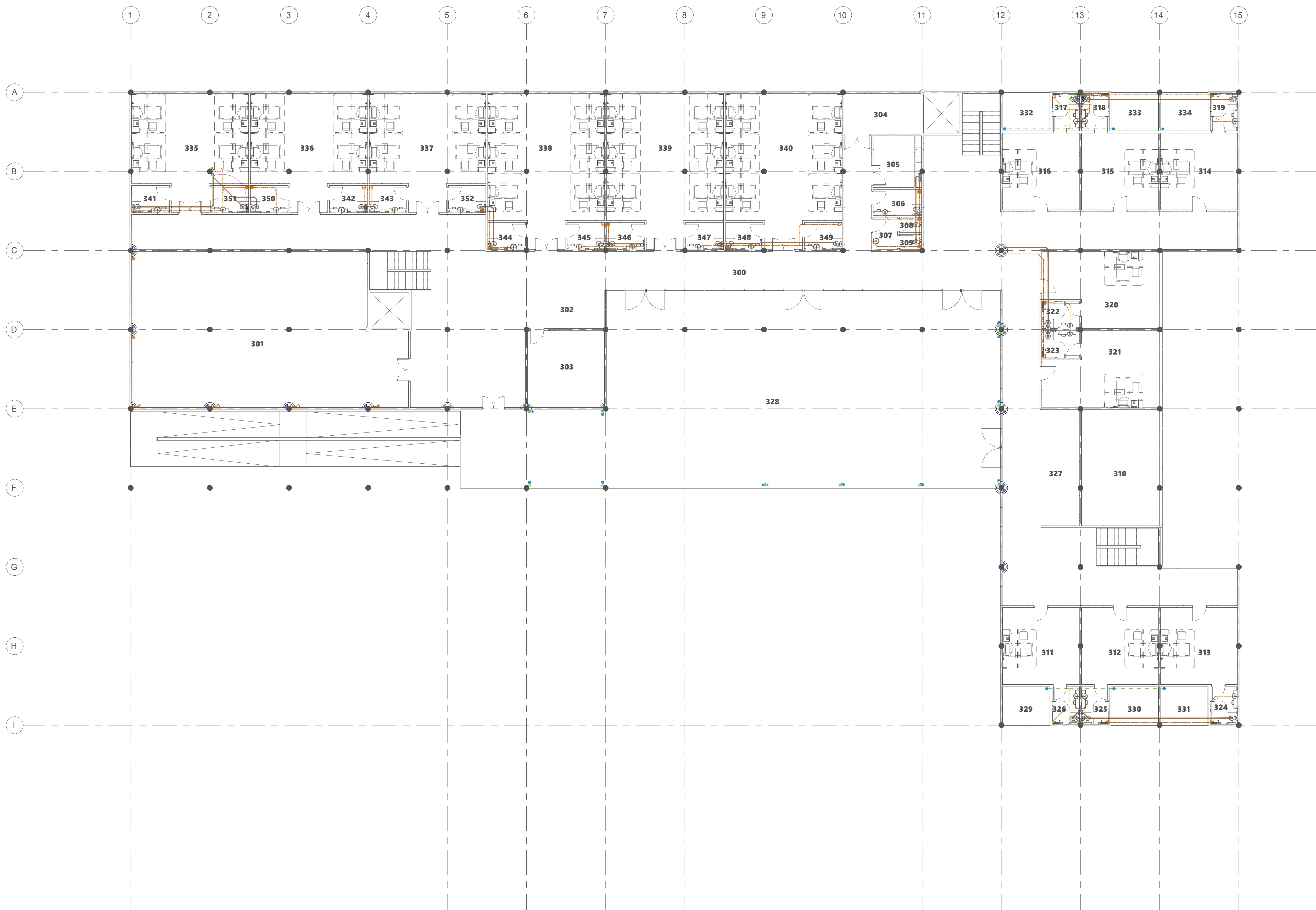


+960 333 3288 | info@epoch.asso
www.epoch.asso.mv | 11, Eymdhafushi
Maldives | Page

Rev: _____

Page

DR-02



- Legend
- Floor Drain
 - Floor Gully
 - 820 Stub For Washing Machine Or Tub
 - 1100 Soil Pipe (uPVC Pipe)
 - 1100 Soil Vent Pipe (uPVC Pipe)
 - 820 Waste Pipe (uPVC Pipe)
 - 820 Waste Vent Pipe (uPVC Pipe)
 - 400 Waste Pipe (uPVC Pipe)
 - 1100 Waste Pipe For Laundry (uPVC Pipe)
 - 630 Manhole Vent Pipe (uPVC Pipe)
 - 1100 Rain Water Pipes (uPVC Pipe)
 - 1100 Waste Pipes From Green Areas (uPVC Pipe)
 - 820 Lab Waste Pipe (CPVC Pipe)
 - 820 Lab Waste Vent Pipe (CPVC Pipe)
 - 900 Stub For Bed Pan Washer
 - 900 Stub For Dialysis Machine With Removable Cap
 - Manhole
 - Gully Trap
 - 1100 Rainwater Outlet Perforated Cowl
 - 1100 Rainwater Outlet
 - Bottle Trap

Notes:-

- All Drainage Pipes Should Have At A Slope Of 1/150
- All Floor Drains Should Have 'P' Traps

PROPOSED 03 STOREY BUILDING AT
**B. EYDHAFUSHI
HOSPITAL**

Client:
**MINISTRY OF HEALTH,
MALDIVES**

December 2019

Services By: Hussain Rasheed
Checked By: Mohamed Rassam
Drawn By: Hussain Rasheed

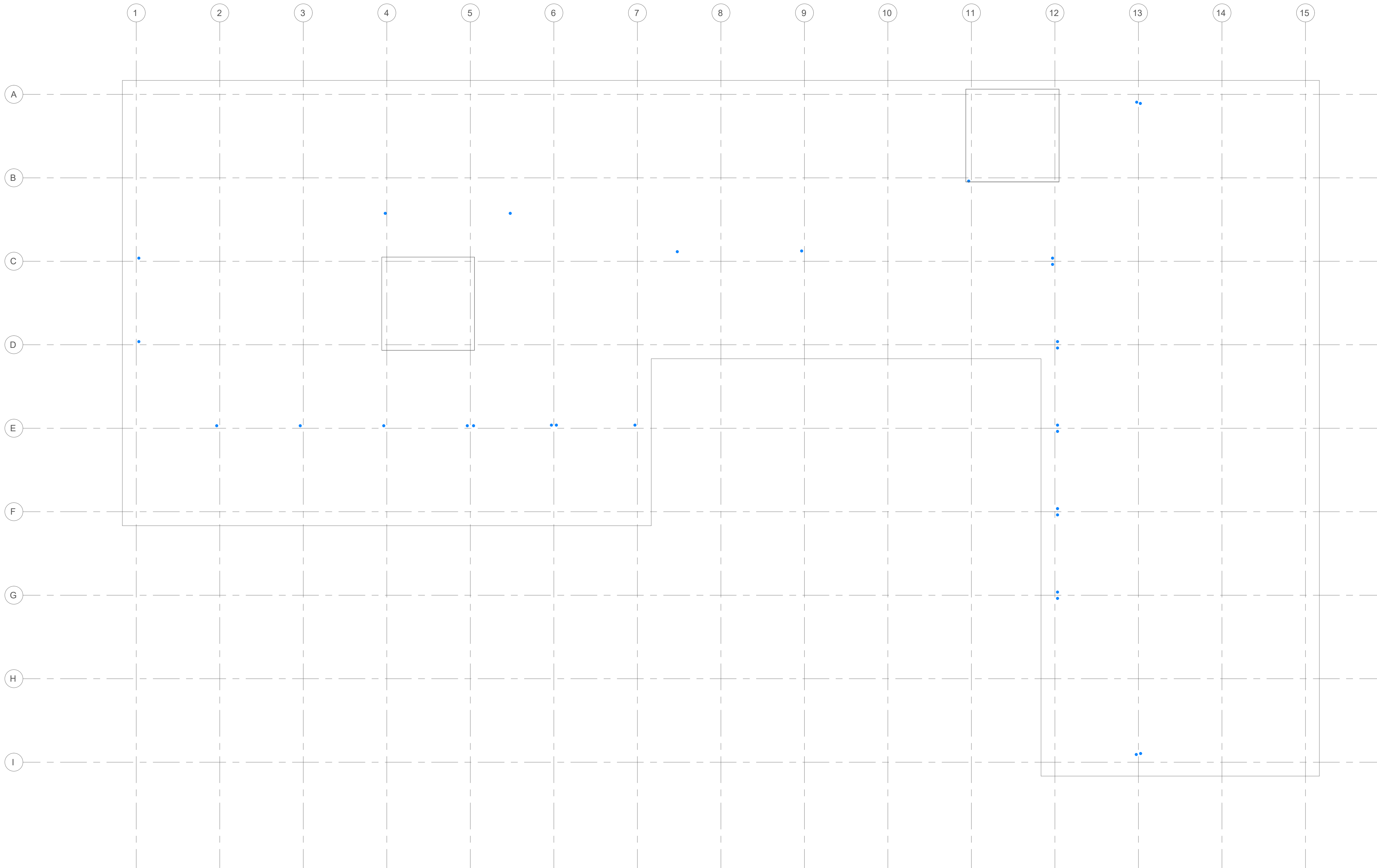


+960 333 3238 ■ info@epoch.asso.ve
■ www.epoch.asso.ve ■ 11, Eppaththuppalu
■ Maldives ■ Page

REV: 1:150

DR-03

SECOND FLOOR DRAINAGE LAYOUT



- Legend
- Floor Drain
 - Floor Gully
 - 820 Stub For Washing Machine Or Tub
 - 1100 Soil Pipe (uPVC Pipe)
 - 1100 Soil Vent Pipe (uPVC Pipe)
 - 820 Waste Pipe (uPVC Pipe)
 - 820 Waste Vent Pipe (uPVC Pipe)
 - 400 Waste Pipe (uPVC Pipe)
 - 1100 Waste Pipe For Laundry (uPVC Pipe)
 - 630 Manhole Vent Pipe (uPVC Pipe)
 - 1100 Rain Water Pipes (uPVC Pipe)
 - 1100 Waste Pipes From Green Areas (uPVC Pipe)
 - 820 Lab Waste Pipe (CPVC Pipe)
 - 820 Lab Waste Vent Pipe (CPVC Pipe)
 - 900 Stub For Bed Pan Washer
 - 900 Stub For Dialysis Machine With Removable Cap
 - Manhole
 - Gully Trap
 - 1100 Rainwater Outlet Perforated Cowl
 - 1100 Rainwater Outlet
 - Bottle Trap

Notes: -

- All Drainage Pipes Should Have At A Slope Of 1/150
- All Floor Drains Should Have 'P' Traps