

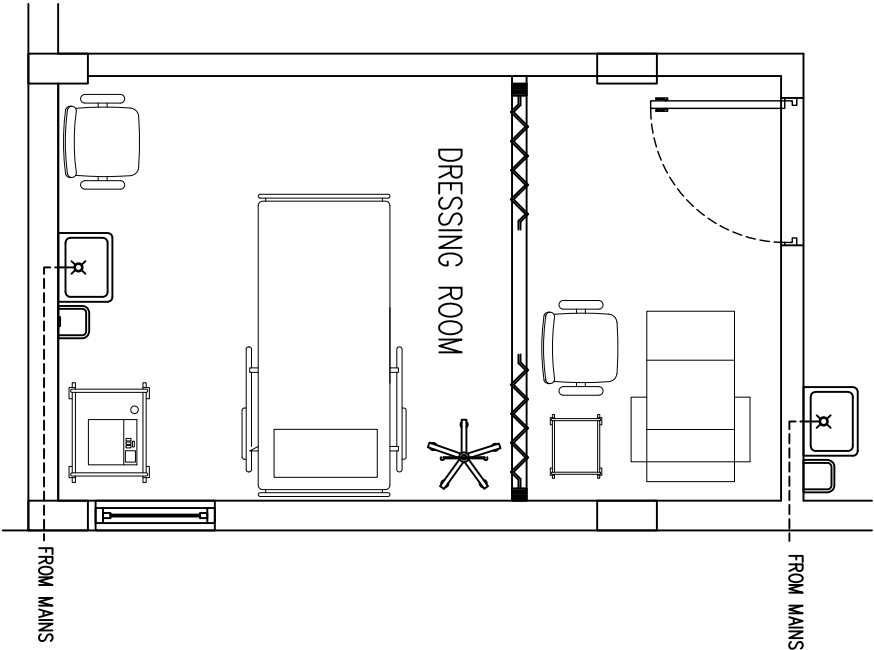
WATER SUPPLY

SYMBOL	DESCRIPTION
↯	TAP
↱↲	MUSLIM SHOWER
⋈	ISOLATING VALVE
----	MWSC WATER SUPPLY (ø12-ø35)
——	GROUND WATER SUPPLY (ø12-ø35)

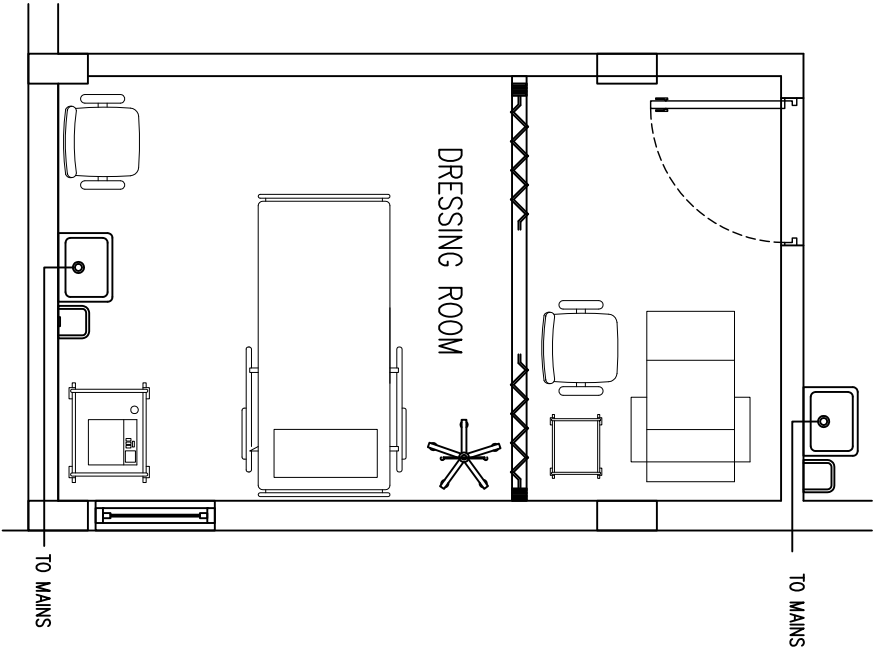
SEWAGE

SYMBOL	DESCRIPTION
■	FLOOR DRAIN
——	UPVC HIGH PRESSURE WASTE WATER PIPE (ø75-ø100)
====	SEWAGE DISPOSAL (ø100-ø150)
└	P TRAP

- NOTE:
- GROUND WATER FOR WC
 - MWSC WATER TAP NEAR WC (MUSLIM SHOWER)
 - MWSC WATER FOR SHOWER HEAD
 - MWSC WATER FOR WASH BASIN
 - ALL THE CONNECTIONS SHOULD BE DONE THROUGH GATE VALVES
 - MWSC WATER TO BE PROVIDED TO ALL KITCHENS SINKS



FRESH WATER SUPPLY PLAN
(GROUND FLOOR-DRESSING ROOM)
SCALE 1:50



SEWAGE AND WASTE DISPOSAL PLAN
(GROUND FLOOR-DRESSING ROOM)
SCALE 1:50