

BUILDING SERVICES DRAWINGS OF
PROPOSED 03 STOREY
**R. RASMAADHOO 6 CLASSROOMS, HEALTH ROOM
AND COUNSELING ROOM, ADMIN OFFICE, SCIENCE
LAB AND STORE**

For Ministry Of Education

By Epoch Associates Pvt. Ltd



EPOCH

T: +960 333 3528 **E:** info@epoch.associates **W:** www.epoch.associates
A: 3rd Floor, G.Rosary West, Husnuheena Magu, Male' Republic of Maldives

Legend

- 13A Twin Socket
- 13A Power Socket
- 15A Switched Socket @ H.L.
- Distribution Board
- HL.
- Computer Network Outlet
- Emergency Light
- WS
- Internet Switchboard
- M
- Electricity Meter
- Public Address System
- Computer Network Twin Outlet
- HDMI Socket
- Computer Network Twin Outlet In Floor Mount Pop-up Box
- Telephone Outlet In Floor Mount Pop-up Box
- 13A Twin Socket In Floor Mount Pop-up Box
- Telephone Outlet

- Main Incoming Cable For Power PVC Duct Below Ground
- 82Ø PVC Duct For Internet Cables Lead In Below Ground Slab

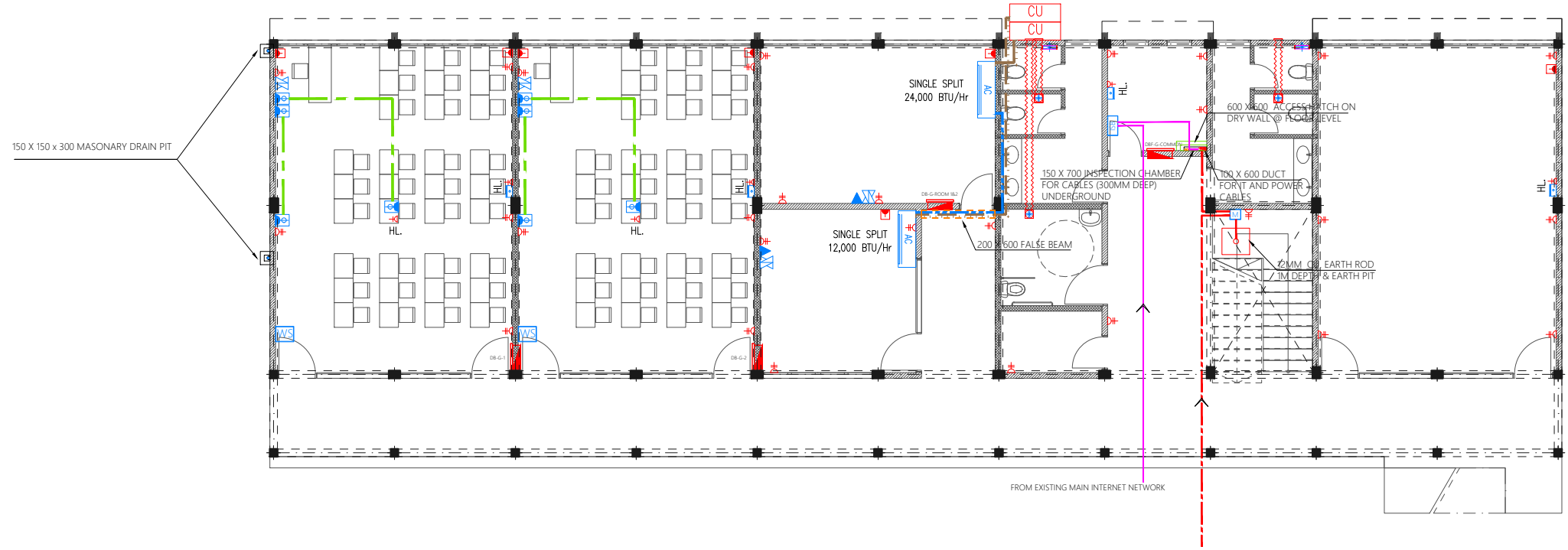
Notes: -

- All Twin Sockets At 300mm From F.F.L. Except Stated Otherwise
- All Computer, Telephone Points At 300mm From F.F.L.
- All electrical components shall be connected to respective Distribution Box in the same area as the component.
- All electrical components in common areas, corridors and staircase should be connected to Common Area DB
- Wall Speaker shall be connected to Public address system of school

- Ceiling Mounted Exhaust Fan 90m3/hr
- Wall Mounted Exhaust Fan
- AC
- CU
- Refrigerant Pipes
- 25Ø Condensate Drain Pipe
- 40Ø Condensate Drain Riser Pipe

Notes: -

Where Condensate Drain Pipes Are Connected To Wash Basin Or Kitchen Sink, 25 Ø Condensate Drain Pipe Is Extended In 32 Ø Flex Conduit Into 40 Ø Waste Pipe Of Respective Basin Or Sink



PROPOSED 03 STOREY

**6 Classrooms,
Health Room,
Counseling Room,
Admin Office,
Science Lab and
Store, R.**

Rasmaadhoo
Client:
Ministry Of Education

March 2021

Services By: Mohamed Rassam
Checked By:
Drawn By: Hussain Rasheed

EPOCH

T: +960 333 3528, E: info@epoch.associates
W: www.epoch.associates, A: G. Rosary West,
Husnuheena Magu, Male' Republic of Maldives

Rev:	Page:
---	PAC-01
---	---
---	---

Legend

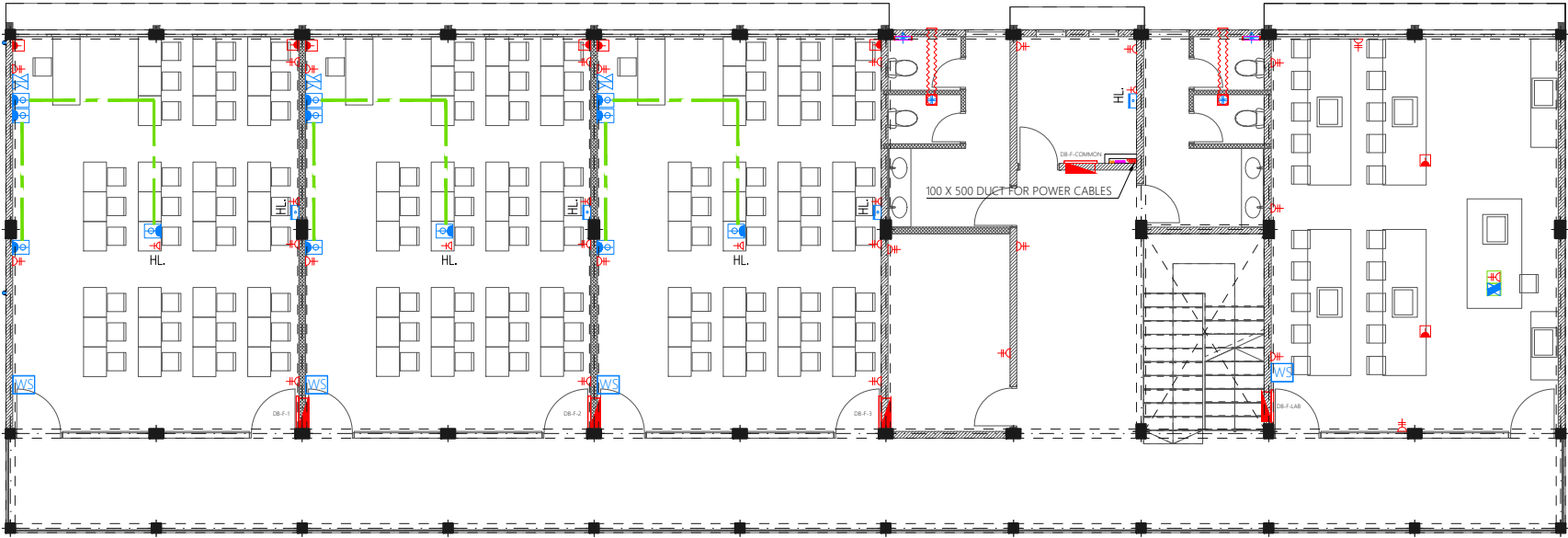
- 13A Twin Socket
- 13A Power Socket
- 15A Switched Socket @ H.L.
- Distribution Board
- HL. High Level
- Computer Network Outlet
- Emergency Light
- Wall Mounted Speaker
- Internet Switchboard
- Electricity Meter
- Public Address System
- Computer Network Twin Outlet
- HDMI Socket
- Computer Network Twin Outlet In Floor Mount Pop-up Box
- Telephone Outlet In Floor Mount Pop-up Box
- 13A Twin Socket In Floor Mount Pop-up Box
- Telephone Outlet

- Main Incoming Cable For Power PVC Duct Below Ground
- 82Ø PVC Duct For Internet Cables Lead In Below Ground Slab

Notes: -
- All Twin Sockets At 300mm From F.F.L. Except Stated Otherwise
- All Computer, Telephone Points At 300mm From F.F.L.
- All electrical components shall be connected to respective Distribution Box in the same area as the component.
- All electrical components in common areas, corridors and staircase should be connected to Common Area DB
- Wall Speaker shall be connected to Public address system of school

- Ceiling Mounted Exhaust Fan 90m3/hr
- Wall Mounted Exhaust Fan
- Wall Mount Air Conditioner
- Outdoor Condensing Unit
- Refrigerant Pipes
- 25Ø Condensate Drain Pipe
- 40Ø Condensate Drain Riser Pipe

Notes: -
Where Condensate Drain Pipes Are Connected To Wash Basin Or Kitchen Sink, 25 Ø Condensate Drain Pipe Is Extended In 32 Ø Flex Conduit Into 40 Ø Waste Pipe Of Respective Basin Or Sink



PROPOSED 03 STOREY
**6 Classrooms,
Health Room,
Counseling Room,
Admin Office,
Science Lab and
Store, R.
Rasmaadhoo**
Client:
Ministry Of Education

March 2021
Services By: Mohamed Rassam
Checked By:
Drawn By: Hussain Rasheed

EPOCH
T: +960 333 3528, E: info@epoch.associates
W: www.epoch.associates, A: G. Rosary West,
Husnuheenaa Magu, Male' Republic of Maldives

Rev: ---
Page: PAC-02

Legend

- 13A Twin Socket
- 13A Power Socket
- 15A Switched Socket @ H.L.
- Distribution Board
- HL. High Level
- Computer Network Outlet
- Emergency Light
- Wall Mounted Speaker
- Internet Switchboard
- Electricity Meter
- Public Address System
- Computer Network Twin Outlet
- HDMI Socket
- Computer Network Twin Outlet In Floor Mount Pop-up Box
- Telephone Outlet In Floor Mount Pop-up Box
- 13A Twin Socket In Floor Mount Pop-up Box
- Telephone Outlet

- Main Incoming Cable For Power PVC Duct Below Ground
- 82Ø PVC Duct For Internet Cables Lead In Below Ground Slab

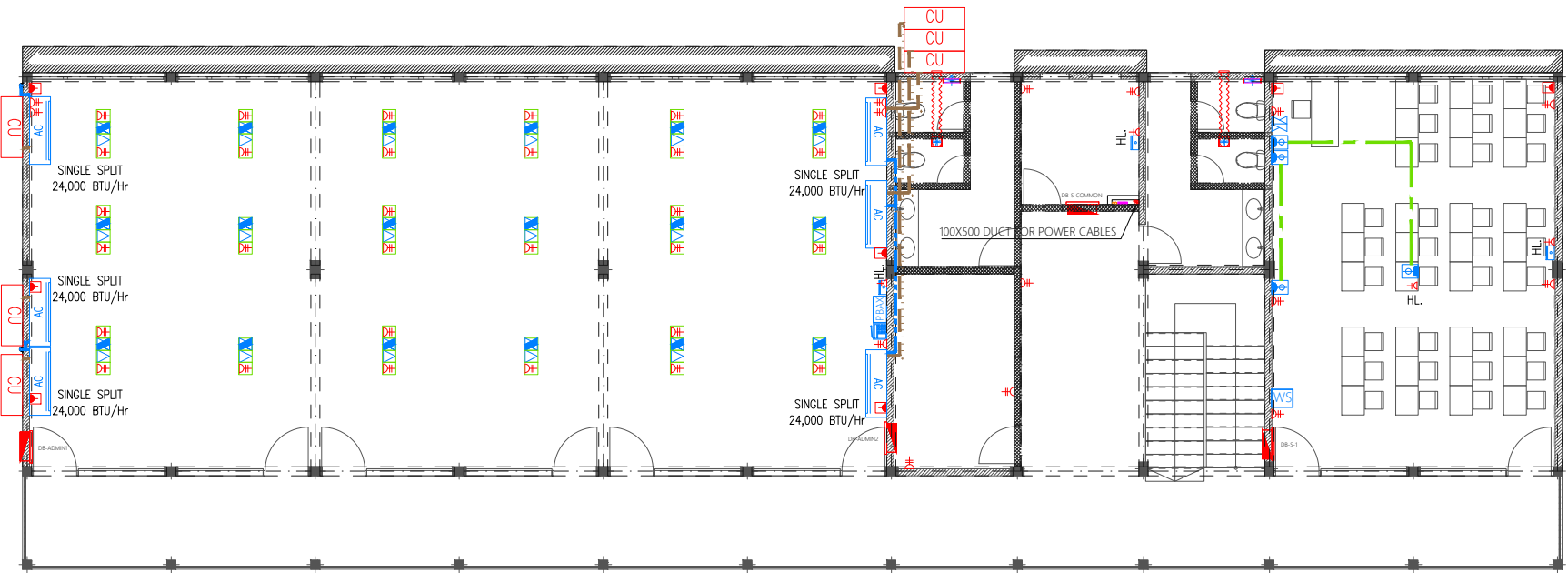
Notes: -

- All Twin Sockets At 300mm From F.F.L. Except Stated Otherwise
- All Computer, Telephone Points At 300mm From F.F.L.
- All electrical components shall be connected to respective Distribution Box in the same area as the component.
- All electrical components in common areas, corridors and staircase should be connected to Common Area DB
- Wall Speaker shall be connected to Public address system of school

- Ceiling Mounted Exhaust Fan 90m3/hr
- Wall Mounted Exhaust Fan
- Wall Mount Air Conditioner
- Outdoor Condensing Unit
- Refrigerant Pipes
- 25Ø Condensate Drain Pipe
- 40Ø Condensate Drain Riser Pipe

Notes: -

Where Condensate Drain Pipes Are Connected To Wash Basin Or Kitchen Sink, 25 Ø Condensate Drain Pipe Is Extended In 32 Ø Flex Conduit Into 40 Ø Waste Pipe Of Respective Basin Or Sink



SECOND FLOOR POWER AND ACV LAYOUT

1:150

PROPOSED 03 STOREY

**6 Classrooms,
Health Room,
Counseling Room,
Admin Office,
Science Lab and
Store, R.
Rasmaadhoo**
Client:
Ministry Of Education

March 2021

Services By: Mohamed Rassam
Checked By:
Drawn By: Hussain Rasheed












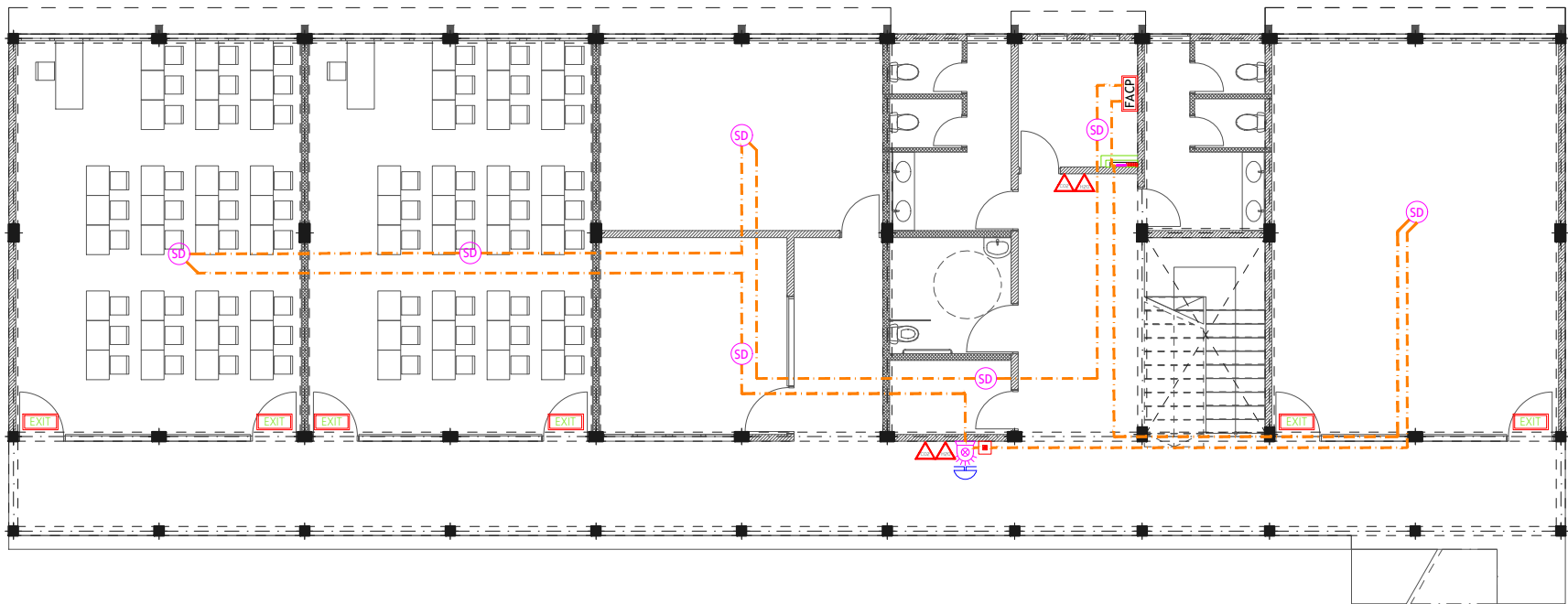
EPOCH

T: +960 333 3528, E: info@epoch.associates
W: www.epoch.associates, A: G. Rosary West,
Husnuheena Magu, Male' Republic of Maldives

Rev: Page:
PAC-03

Legend

-  CO₂ Extinguisher (load: 2kg) In Polycarbonate Enclosure
-  H₂O Extinguisher (load: 9L) In Polycarbonate Enclosure
-  Manual Call Point (At 1200mm from F.F.L.)
-  Smoke Detector
-  Beacon
-  Sounder Bell
-  2.5mm² Fire Retardant Low Smoke (FRLS) Cables In FRLS Conduits
-  Fire Alarm Control Panel
-  Exit Sign



GROUND FLOOR FDP LAYOUT
1:150

PROPOSED 03 STOREY
**6 Classrooms,
Health Room,
Counseling Room,
Admin Office,
Science Lab and
Store, R.
Rasmaadhoo**
Client:
Ministry Of Education










March 2021

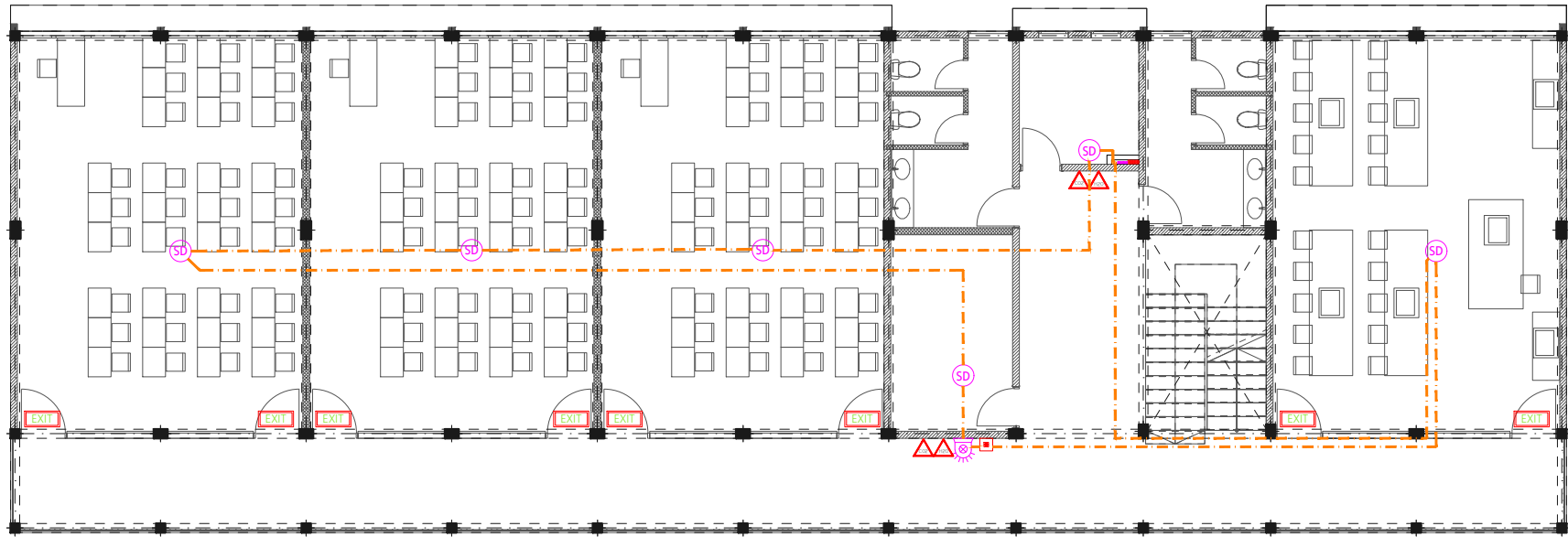
Services By: Mohamed Rassam
Checked By:
Drawn By: Hussain Rasheed


EPOCH
T: +960 333 3528, E: info@epoch.associates
W: www.epoch.associates, A: G. Rosary West,
Husnuheena Magu, Male' Republic of Maldives

Rev:	Page:
---	FDP -01

Legend

-  CO₂ Extinguisher (load: 2kg) In Polycarbonate Enclosure
-  H₂O Extinguisher (load: 9L) In Polycarbonate Enclosure
-  Manual Call Point (At 1200mm from F.F.L.)
-  Smoke Detector
-  Beacon
-  Sounder Bell
-  2.5mm² Fire Retardant Low Smoke (FRLS) Cables In FRLS Conduits
-  Fire Alarm Control Panel
-  Exit Sign



FIRST FLOOR FDP LAYOUT
1:150

PROPOSED 03 STOREY
**6 Classrooms,
Health Room,
Counseling Room,
Admin Office,
Science Lab and
Store, R.
Rasmaadhoo**
Client:
Ministry Of Education










March 2021

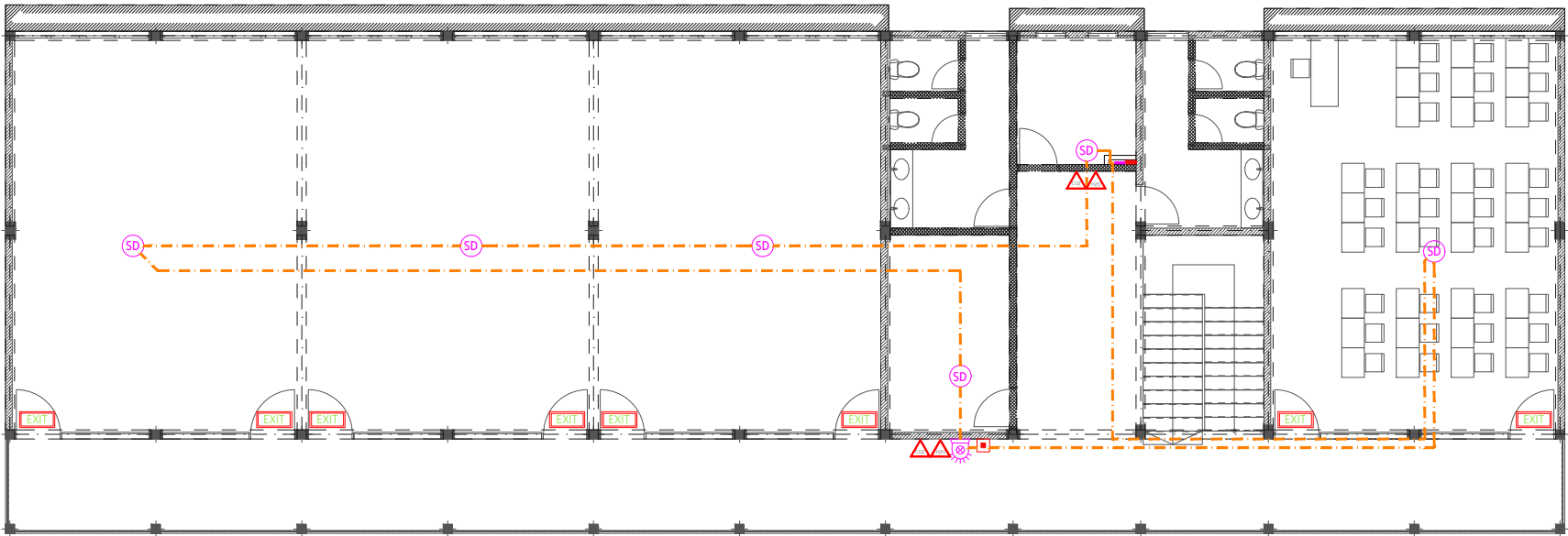
Services By: Mohamed Rassam
Checked By:
Drawn By: Hussain Rasheed


EPOCH
T: +960 333 3528, E: info@epoch.associates
W: www.epoch.associates, A: G. Rosary West,
Husnuheena Magu, Male' Republic of Maldives

Rev:	Page:
---	FDP -02

Legend

-  CO₂ Extinguisher (load: 2kg) In Polycarbonate Enclosure
-  H₂O Extinguisher (load: 9L) In Polycarbonate Enclosure
-  Manual Call Point (At 1200mm from F.F.L.)
-  Smoke Detector
-  Beacon
-  Sounder Bell
-  2.5mm² Fire Retardant Low Smoke (FRLS) Cables In FRLS Conduits
-  Fire Alarm Control Panel
-  Exit Sign



SECOND FLOOR FDP LAYOUT
1:150

PROPOSED 03 STOREY
**6 Classrooms,
Health Room,
Counseling Room,
Admin Office,
Science Lab and
Store, R.
Rasmaadhoo**
Client:
Ministry Of Education

March 2021

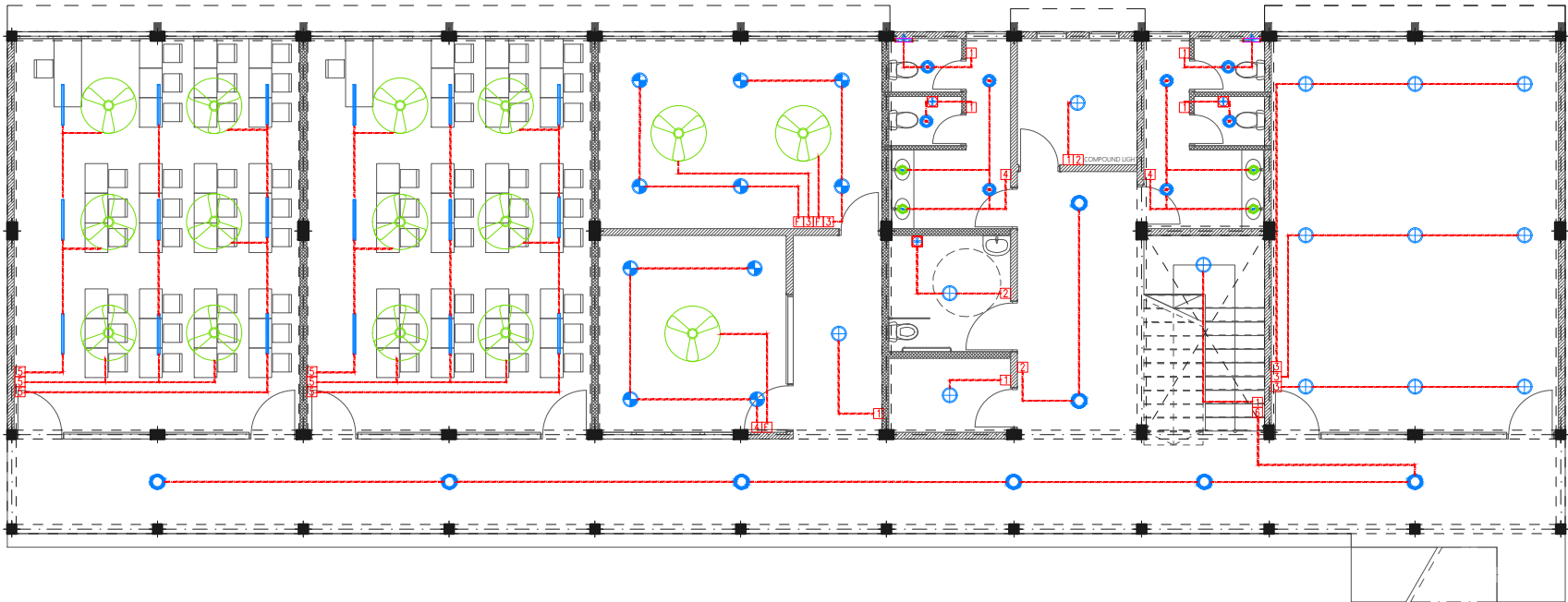
Services By: Mohamed Rassam
Checked By:
Drawn By: Hussain Rasheed


EPOCH
T: +960 333 3528, E: info@epoch.associates
W: www.epoch.associates, A: G. Rosary West,
Husnuheena Magu, Male' Republic of Maldives

Rev:	Page:
---	FDP -03

Legend

- Ceiling Light (18W)
- Ceiling Light (12W)
- Recessed Ceiling Light (12W)
- Ceiling Down Light (18W) - Weather Proof
- 3 Ft Led Tube Light
- 100W, HPS, Wall Mounted Light,IP 65
- Light and Fan Switch (1 Gang - 5 Gang)
- Ceiling Fan Switch With Controller
- Ceiling Mounted Exhaust Fan 90m3/hr
- 42" To 48" Ceiling Fan



GROUND FLOOR LIGHTING LAYOUT
1:150

PROPOSED 03 STOREY
**6 Classrooms,
Health Room,
Counseling Room,
Admin Office,
Science Lab and
Store, R.
Rasmaadhoo**
Client:
Ministry Of Education










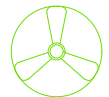
March 2021

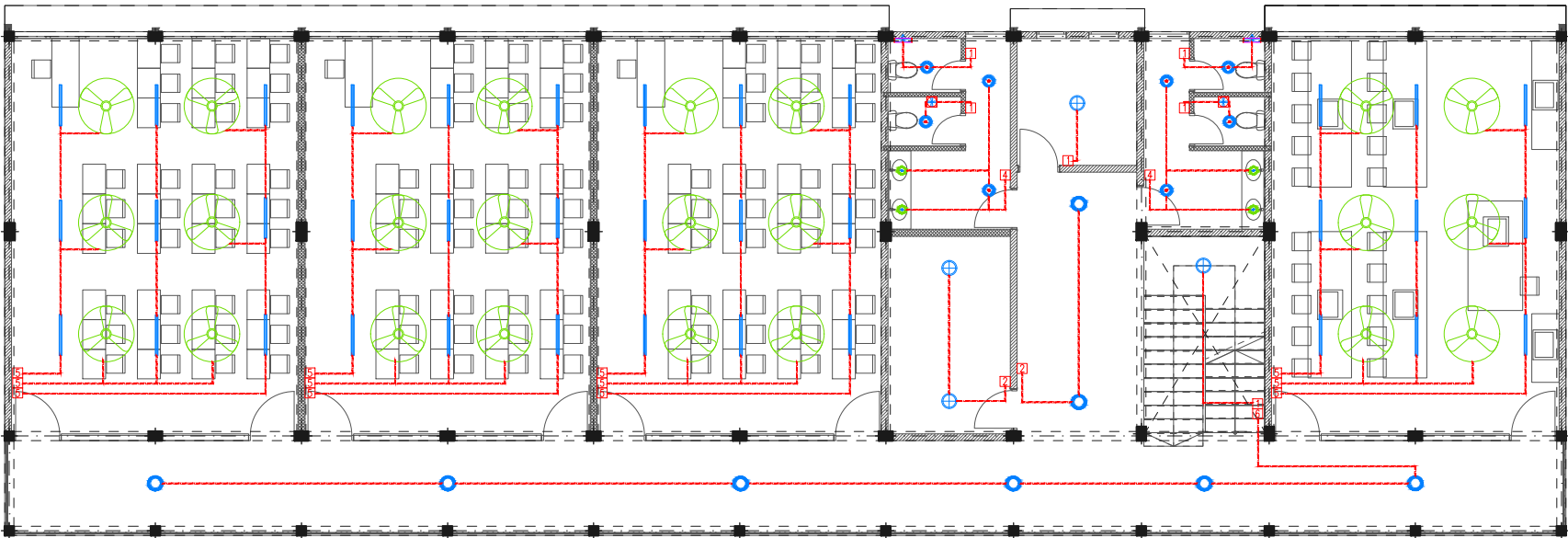
Services By: Mohamed Rassam
Checked By:
Drawn By: Hussain Rasheed


EPOCH
T: +960 333 3528, E: info@epoch.associates
W: www.epoch.associates, A: G. Rosary West,
Husnuheena Magu, Male' Republic of Maldives

Rev:	Page:
---	EL -01
---	---
---	---

Legend

-  Ceiling Light (18W)
-  Ceiling Light (12W)
-  Recessed Ceiling Light (12W)
-  Ceiling Down Light (18W) - Weather Proof
-  3 Ft Led Tube Light
-  100W, HPS, Wall Mounted Light, IP 65
-  Light and Fan Switch (1 Gang - 5 Gang)
-  Ceiling Fan Switch With Controller
-  Ceiling Mounted Exhaust Fan 90m3/hr
-  42" To 48" Ceiling Fan



FIRST FLOOR LIGHTING LAYOUT
1:150










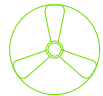
PROPOSED 03 STOREY
**6 Classrooms,
Health Room,
Counseling Room,
Admin Office,
Science Lab and
Store, R.
Rasmaadhoo**
Client:
Ministry Of Education

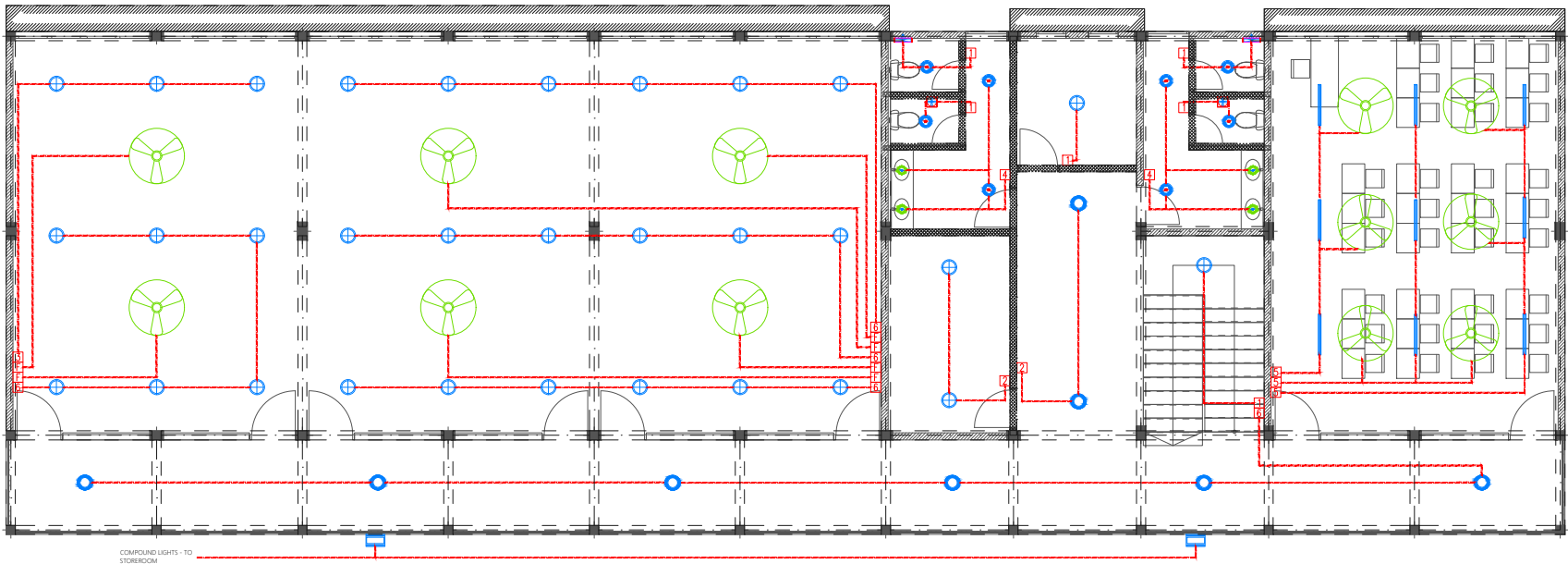
March 2021
Services By: Mohamed Rassam
Checked By:
Drawn By: Hussain Rasheed


EPOCH
T: +960 333 3528, E: info@epoch.associates
W: www.epoch.associates, A: G. Rosary West,
Husnuheena Magu, Male' Republic of Maldives

Rev:	Page:
---	EL -02
---	---
---	---

Legend

-  Ceiling Light (18W)
-  Ceiling Light (12W)
-  Recessed Ceiling Light (12W)
-  Ceiling Down Light (18W) - Weather Proof
-  3 Ft Led Tube Light
-  100W, HPS, Wall Mounted Light, IP 65
-  Light and Fan Switch (1 Gang - 5 Gang)
-  Ceiling Fan Switch With Controller
-  Ceiling Mounted Exhaust Fan 90m3/hr
-  42" To 48" Ceiling Fan



SECOND FLOOR LIGHTING LAYOUT
1:150

PROPOSED 03 STOREY
**6 Classrooms,
Health Room,
Counseling Room,
Admin Office,
Science Lab and
Store, R.
Rasmaadhoo**
Client:
Ministry Of Education

March 2021
Services By: Mohamed Rassam
Checked By:
Drawn By: Hussain Rasheed

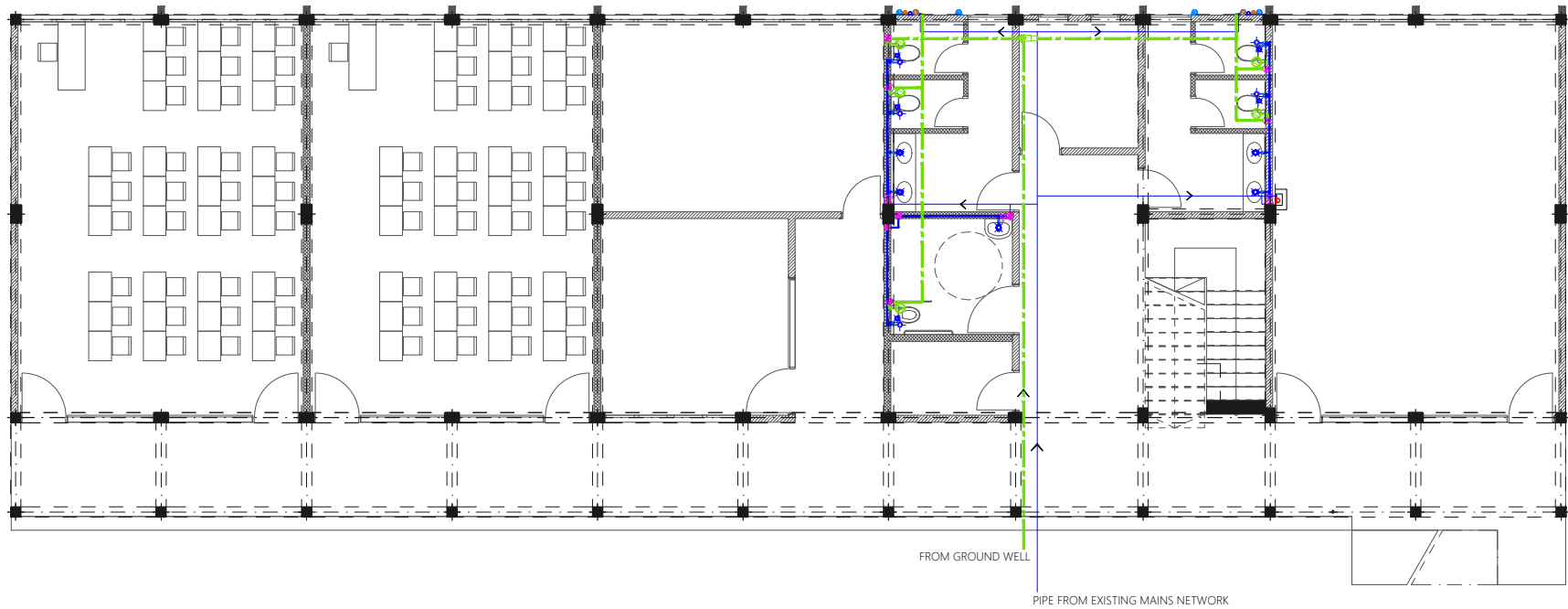

EPOCH
T: +960 333 3528, E: info@epoch.associates
W: www.epoch.associates, A: G. Rosary West,
Husnuheena Magu, Male' Republic of Maldives

Rev: ---
Page: EL -03

- Legend
- 16Ø Cold Water Supply To Basin Faucet
 - 16Ø Cold Water Supply To Bidet Shower
 - 16Ø Cold Water Supply To Cistern
 - Gate Valve
 - Rise In Wall
 - Drop In Wall
 - Angle Valve with cap for Ground Water Supply
 - 25Ø Cold Water Supply Pipes Running Underground
 - 20Ø Cold Water Supply Pipes Running In Wall
 - 20Ø Cold Water Supply Pipes Running Above False Ceiling
 - 20Ø Cold Water Supply Pipes Running Underground
 - 25Ø Ground Water Supply Pipes

Notes: -

- All Cold Water Pipes Should Be PVC
- SII Hot Water Pipes Should Be PPR



GROUND FLOOR PLUMBING LAYOUT
1:150

PROPOSED 03 STOREY
**6 Classrooms,
Health Room,
Counseling Room,
Admin Office,
Science Lab and
Store, R.
Rasmaadhoo**
Client:
Ministry Of Education

March 2021

Services By: Mohamed Rassam
Checked By:
Drawn By: Hussain Rasheed


EPOCH
T: +960 333 3528, E: info@epoch.associates
W: www.epoch.associates, A: G. Rosary West,
Husnuheena Magu, Male' Republic of Maldives

Rev:	Page:
---	PL -01

Legend

- 16Ø Cold Water Supply To Basin Faucet
- 16Ø Cold Water Supply To Bidet Shower
- 16Ø Cold Water Supply To Cistern
- 16Ø Cold Water Supply To Sink Tap
- Gate Valve
- Rise Through Slab
- Drop In Wall
- Angle Valve with cap for Ground Water Supply
- 25Ø Cold Water Supply Pipes Running Underground
- 20Ø Cold Water Supply Pipes Running In Wall
- 20Ø Cold Water Supply Pipes Running Above False Ceiling
- 20Ø Cold Water Supply Pipes Running Below Slab
- 25Ø Ground Water Supply Pipes

Notes: -

- All Cold Water Pipes Should Be PVC
- Sll Hot Water Pipes Should Be PPR



FIRST FLOOR PLUMBING LAYOUT
1:150

PROPOSED 03 STOREY
**6 Classrooms,
Health Room,
Counseling Room,
Admin Office,
Science Lab and
Store, R.
Rasmaadhoo**
Client:
Ministry Of Education

March 2021
Services By: Mohamed Rassam
Checked By:
Drawn By: Hussain Rasheed

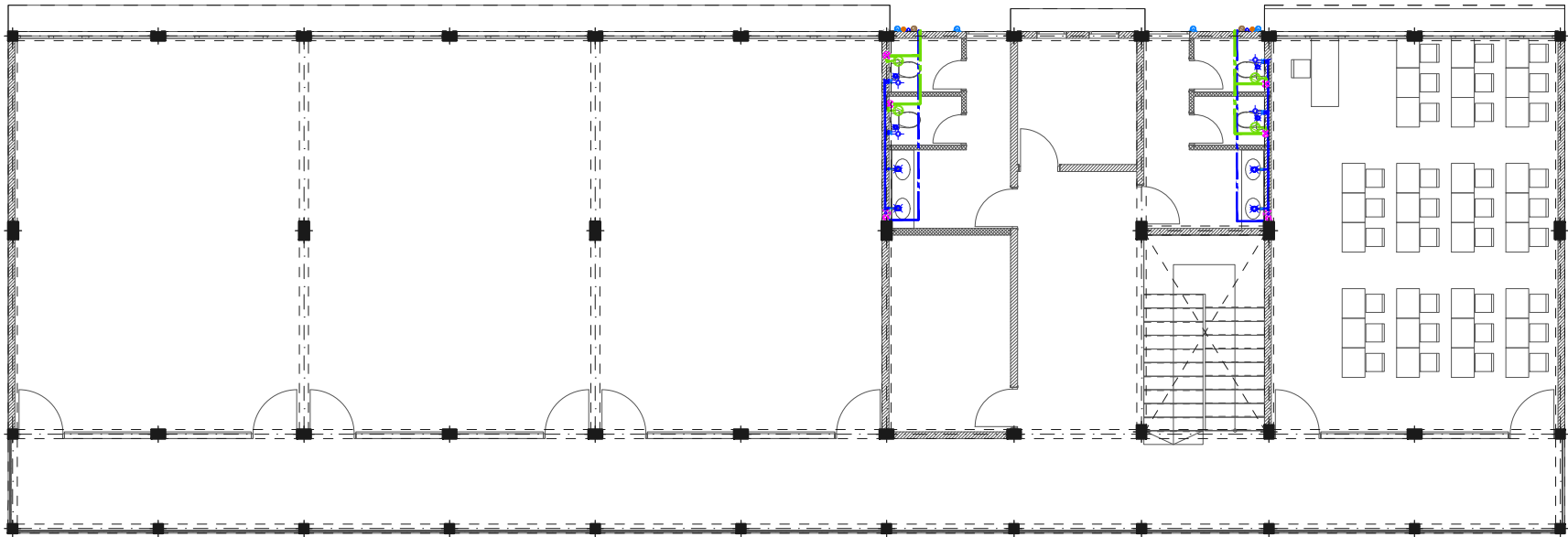
EPOCH
T: +960 333 3528, E: info@epoch.associates
W: www.epoch.associates, A: G. Rosary West,
Husnuheena Magu, Male' Republic of Maldives

Rev: ---
Page: PL -02

- Legend
- 16Ø Cold Water Supply To Basin Faucet
 - 16Ø Cold Water Supply To Bidet Shower
 - 16Ø Cold Water Supply To Cistern
 - Gate Valve
 - Rise In Wall
 - Drop In Wall
 - Angle Valve with cap for Ground Water Supply
 - 25Ø Cold Water Supply Pipes Running Underground
 - 20Ø Cold Water Supply Pipes Running In Wall
 - 20Ø Cold Water Supply Pipes Running Above False Ceiling
 - 20Ø Cold Water Supply Pipes Running Underground
 - 25Ø Ground Water Supply Pipes

Notes: -

- All Cold Water Pipes Should Be PVC
- SII Hot Water Pipes Should Be PPR



SECOND FLOOR PLUMBING LAYOUT
1:150

PROPOSED 03 STOREY
**6 Classrooms,
Health Room,
Counseling Room,
Admin Office,
Science Lab and
Store, R.
Rasmaadhoo**
Client:
Ministry Of Education

March 2021

Services By: Mohamed Rassam
Checked By:
Drawn By: Hussain Rasheed

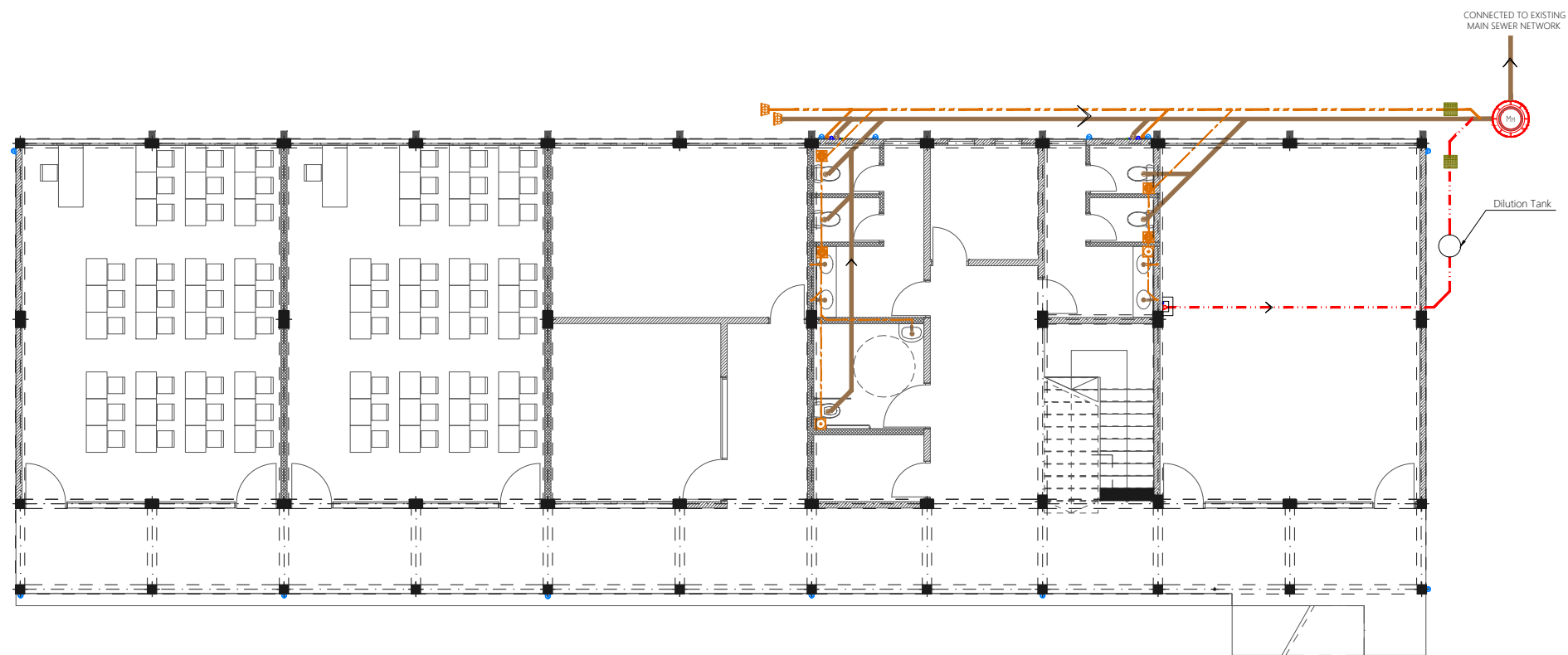

EPOCH
T: +960 333 3528, E: info@epoch.associates
W: www.epoch.associates, A: G. Rosary West,
Husnuheena Magu, Male' Republic of Maldives

Rev:	Page:
---	PL -03

- Legend
- Floor Drain
 - Floor Gully
 - 110Ø Soil Pipe (uPVC Pipe)
 - 110Ø Soil Vent Pipe (uPVC Pipe)
 - 82Ø Waste Pipe (uPVC Pipe)
 - 82Ø Waste Vent Pipe (uPVC Pipe)
 - 40Ø Waste Pipe (uPVC Pipe)
 - 82Ø Lab Waste Pipe (CPVC Pipe)
 - 82Ø Lab Waste Vent Pipe (CPVC Pipe)
 - 63Ø Manhole Vent Pipe (uPVC Pipe)
 - 110Ø Rain Water Pipes (uPVC Pipe)
 - Clean Out Point
 - Bottle Trap
 - Manhole
 - Gully Trap

Notes: -

- All Drainage Pipes Should Have At A Slope Of 1/150
- All Floor Drains Should Have 'P' Traps



GROUND FLOOR DRAINAGE LAYOUT

1:150

PROPOSED 03 STOREY
**6 Classrooms,
Health Room,
Counseling Room,
Admin Office,
Science Lab and
Store, R.
Rasmaadhoo**
Client:
Ministry Of Education

March 2021

Services By: Mohamed Rassam
Checked By:
Drawn By: Hussain Rasheed



EPOCH

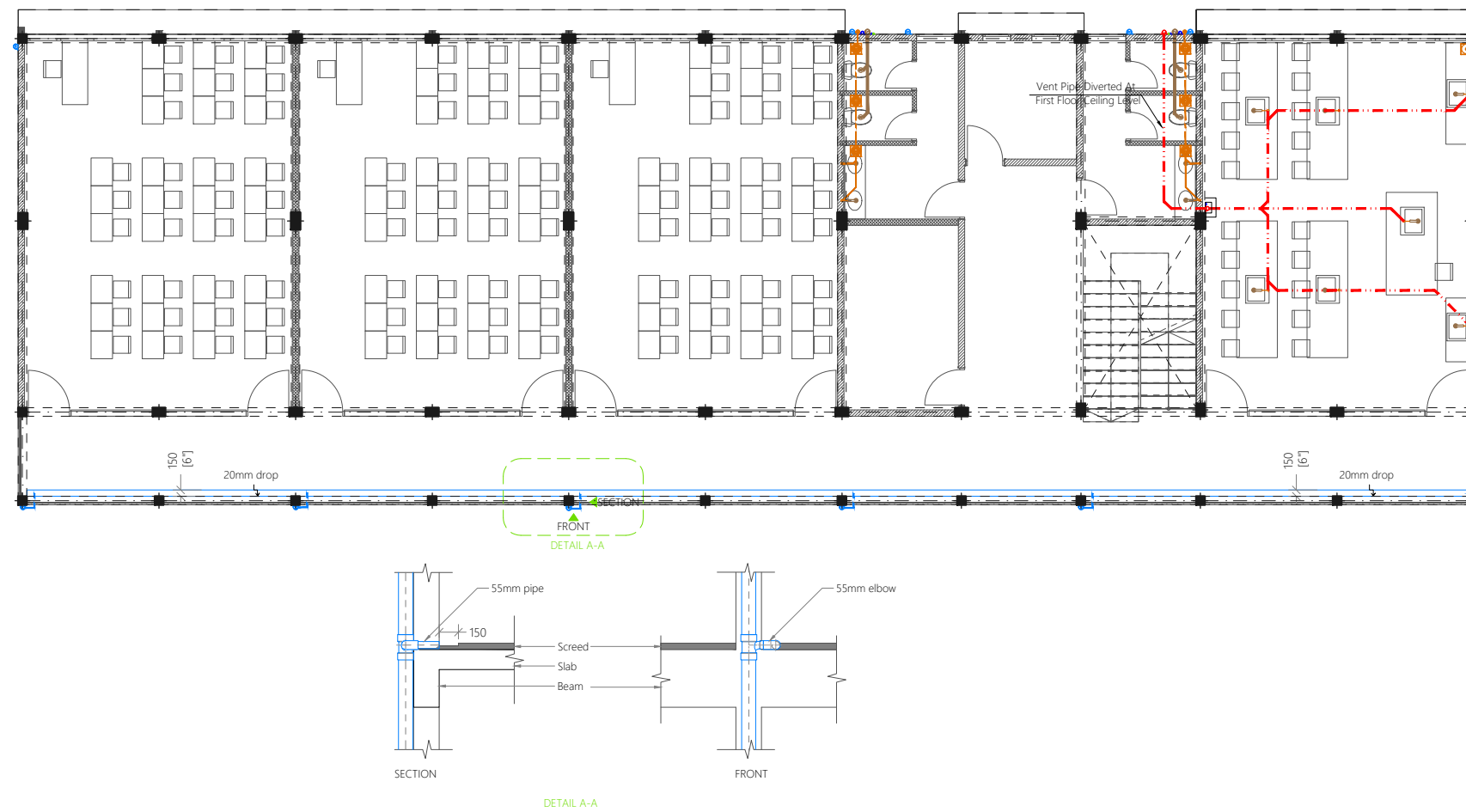
T: +960 333 3528, E: info@epoch.associates
W: www.epoch.associates, A: G. Rosary West,
Husnuheena Magu, Male' Republic of Maldives

Rev: ---
Page: DR -01

- Legend
- Floor Drain
 - Floor Gully
 - 110Ø Soil Pipe (uPVC Pipe)
 - 110Ø Soil Vent Pipe (uPVC Pipe)
 - 82Ø Waste Pipe (uPVC Pipe)
 - 82Ø Waste Vent Pipe (uPVC Pipe)
 - 40Ø Waste Pipe (uPVC Pipe)
 - 82Ø Lab Waste Pipe (CPVC Pipe)
 - 82Ø Lab Waste Vent Pipe (CPVC Pipe)
 - 63Ø Manhole Vent Pipe (uPVC Pipe)
 - 110Ø Rain Water Pipes (uPVC Pipe)
 - Clean Out Point
 - Bottle Trap
 - Manhole
 - Gully Trap

Notes: -

- All Drainage Pipes Should Have At A Slope Of 1/150
- All Floor Drains Should Have 'P' Traps



PROPOSED 03 STOREY
**6 Classrooms,
Health Room,
Counseling Room,
Admin Office,
Science Lab and
Store, R.
Rasmaadhoo**
Client:
Ministry Of Education

March 2021

Services By: Mohamed Rassam
Checked By:
Drawn By: Hussain Rasheed



EPOCH

T: +960 333 3528, E: info@epoch.associates
W: www.epoch.associates, A: G. Rosary West,
Husnuheenaa Magu, Male Republic of Maldives

Rev:	Page:
---	DR -02

FIRST FLOOR DRAINAGE LAYOUT

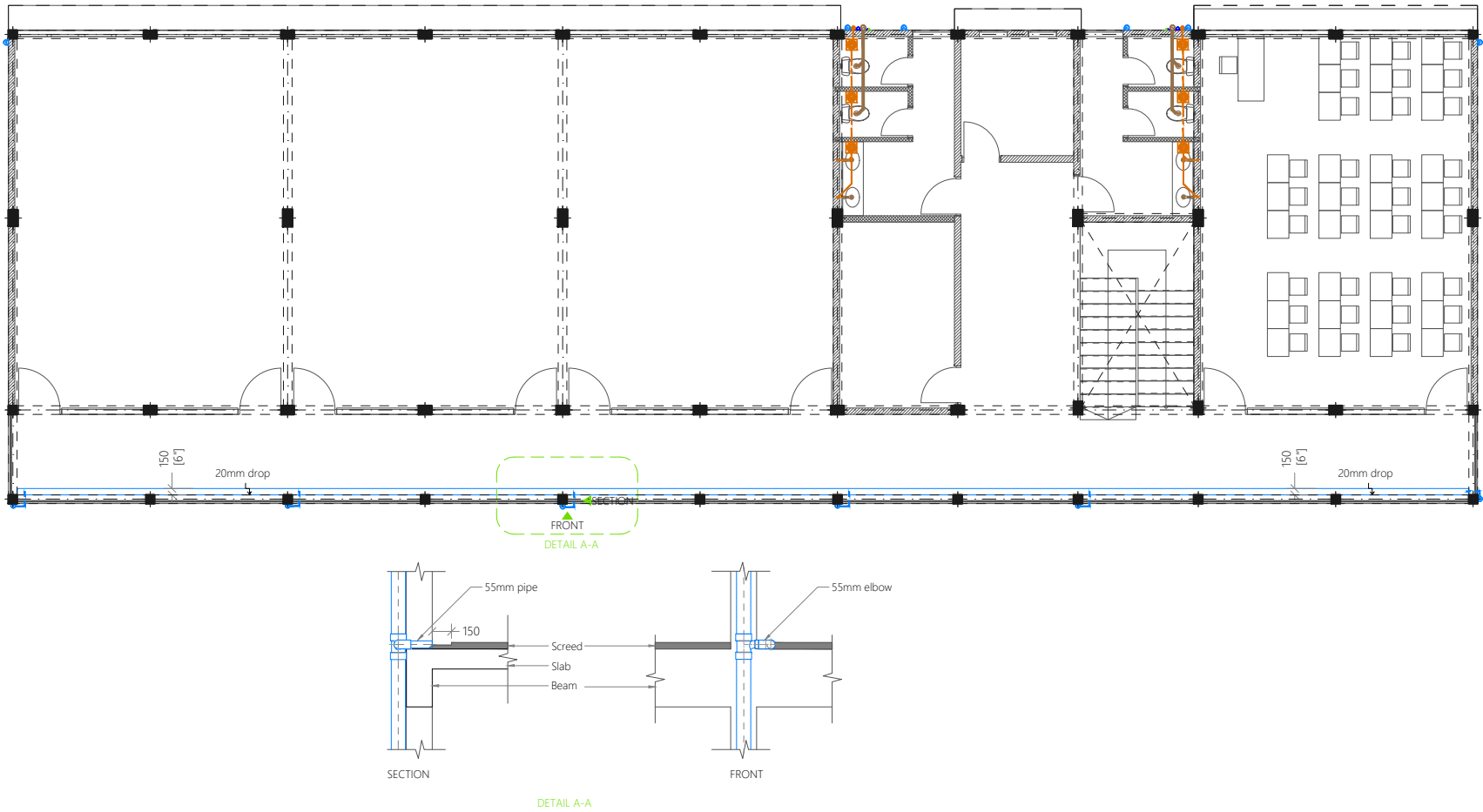
1:150

Legend

- Floor Drain
- Floor Gully
- 110Ø Soil Pipe (uPVC Pipe)
- 110Ø Soil Vent Pipe (uPVC Pipe)
- 82Ø Waste Pipe (uPVC Pipe)
- 82Ø Waste Vent Pipe (uPVC Pipe)
- 40Ø Waste Pipe (uPVC Pipe)
- 82Ø Lab Waste Pipe (CPVC Pipe)
- 82Ø Lab Waste Vent Pipe (CPVC Pipe)
- 63Ø Manhole Vent Pipe (uPVC Pipe)
- 110Ø Rain Water Pipes (uPVC Pipe)
- Clean Out Point
- Bottle Trap
- Manhole
- Gully Trap

Notes: -

- All Drainage Pipes Should Have At A Slope Of 1/150
- All Floor Drains Should Have 'P' Traps




PROPOSED 03 STOREY
**6 Classrooms,
Health Room,
Counseling Room,
Admin Office,
Science Lab and
Store, R.
Rasmaadhoo**
Client:
Ministry Of Education


March 2021
Services By: Mohamed Rassam
Checked By:
Drawn By: Hussain Rasheed


EPOCH
T: +960 333 3528, E: info@epoch.associates
W: www.epoch.associates, A: G. Rosary West,
Husnuheenaa Magu, Male' Republic of Maldives


Rev: ---


Page: DR -03


- Legend
-  Floor Drain


 Floor Gully


 110Ø Soil Pipe (uPVC Pipe)


 110Ø Soil Vent Pipe (uPVC Pipe)


 82Ø Waste Pipe (uPVC Pipe)


 82Ø Waste Vent Pipe (uPVC Pipe)


 40Ø Waste Pipe (uPVC Pipe)


 82Ø Lab Waste Pipe (CPVC Pipe)


 82Ø Lab Waste Vent Pipe (CPVC Pipe)


 63Ø Manhole Vent Pipe (uPVC Pipe)

 110Ø Rain Water Pipes (uPVC Pipe)

 Clean Out Point

 Bottle Trap

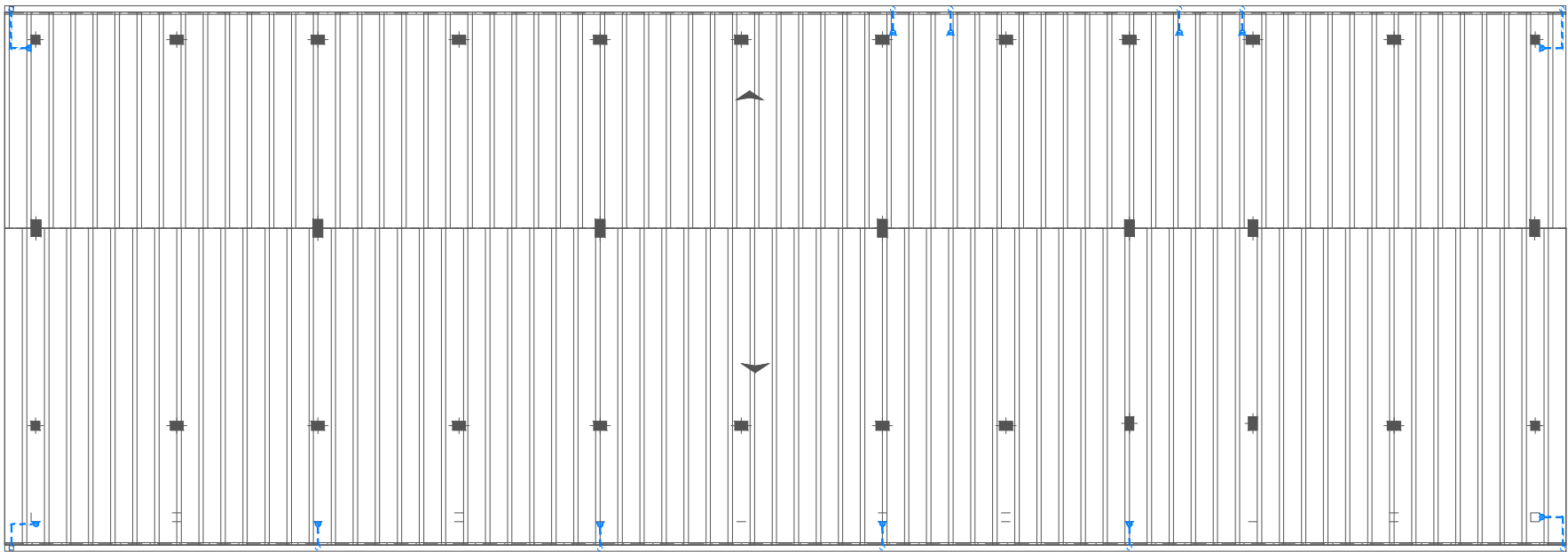
 Manhole

 Gully Trap

Notes: -

-All Drainage Pipes Should Have At A Slope Of 1/150

-All Floor Drains Should Have 'P' Traps



PROPOSED 03 STOREY

**6 Classrooms,
Health Room,
Counseling Room,
Admin Office,
Science Lab and
Store, R.
Rasmaadhoo**

Client:
Ministry Of Education

March 2021

Services By: **Mohamed Rassam**

Checked By:

Drawn By: **Hussain Rasheed**


EPOCH

T: +960 333 3528, **E:** info@epoch.associates
W: www.epoch.associates, **A:** G.Rosary West,
Husnuheenaa Magu, Male' Republic of Maldives

Rev:	Page:
---	DR -04

