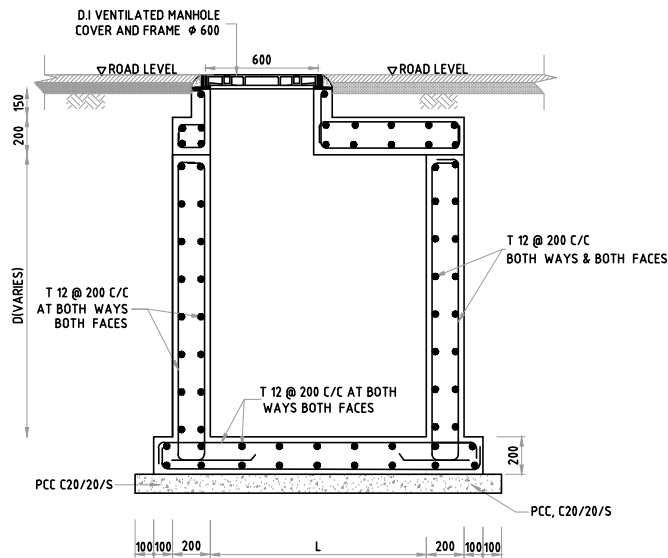


SECTION A-A
SCALE 1:20



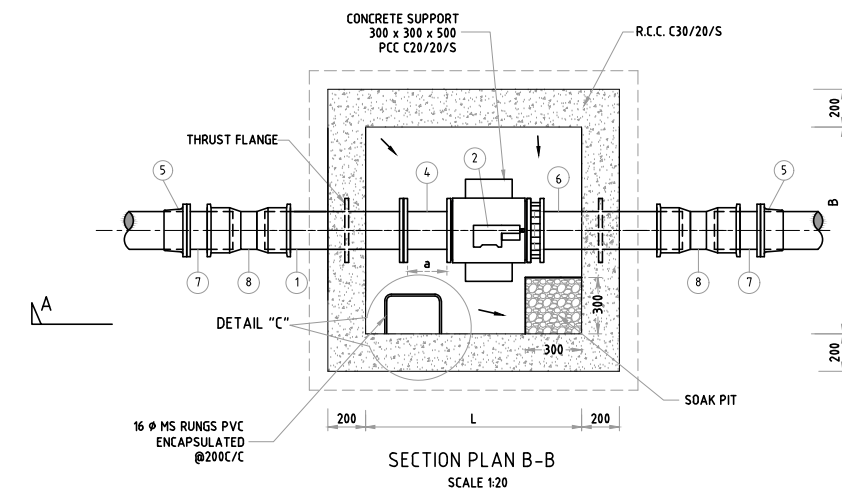
REINFORCEMENT DETAILS AT SECTION C-C
SCALE 1:20

SCHEDULE OF SPECIALS AND FITTINGS

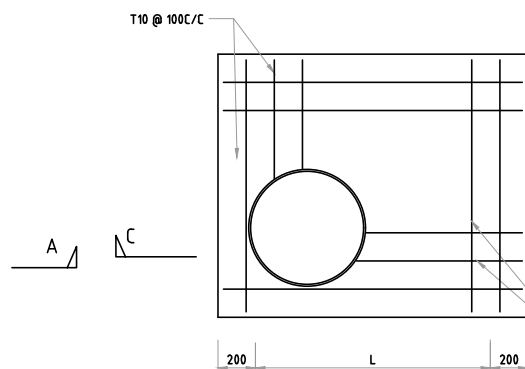
| ITEM | SPECIALS AND FITTINGS | QTY |
|------|--|-----|
| 1 | DI - SPIGOT PIPE WITH WELDED THRUST FLANGE | 1 |
| 2 | FLOW METER | 1 |
| 3 | FLANGED ADAPTOR | 1 |
| 4 | DI FLANGED-SPIGOT PIECE | 1 |
| 5 | DI/PE ADAPTOR | 2 |
| 6 | DI FLANGED SPIGOT PIPE WITH WELDED PUDDLE FLANGE | 1 |
| 7 | DI SHORT LENGTH FLANGED SPIGOT PIECE | 2 |
| 8 | DI COLLAR | 2 |

DIMENSIONS OF VALVE CHAMBER

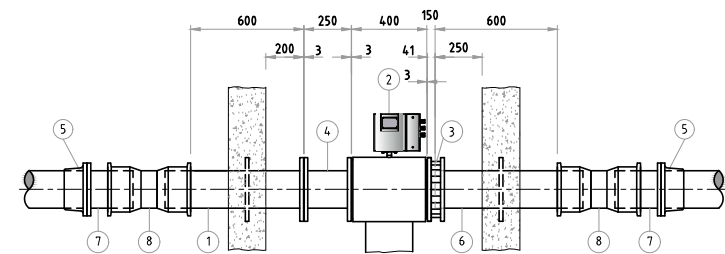
| Dia of Pipe (d) | L | B | a |
|-----------------|------|------|------|
| 80-200 | 1200 | 1200 | 250 |
| 250 | 1450 | 1250 | 425 |
| 300 | 1750 | 1300 | 650 |
| 350 | 2000 | 1350 | 875 |
| 400 | 2300 | 1400 | 1100 |
| 450 | 2500 | 1450 | 1325 |
| 500 | 2850 | 1500 | 1575 |



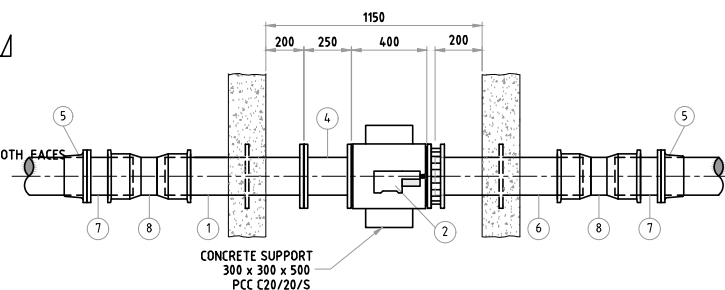
SECTION PLAN B-B
SCALE 1:20



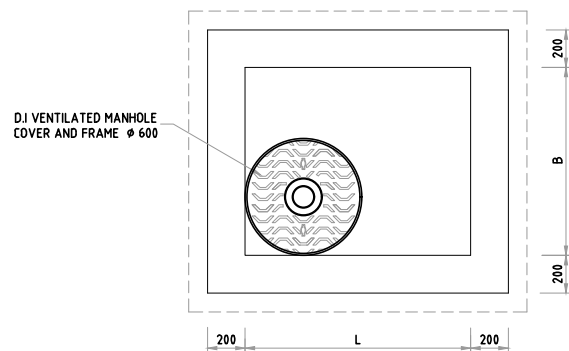
REINFORCEMENT DETAILS OF COVER SLAB
SCALE 1:20



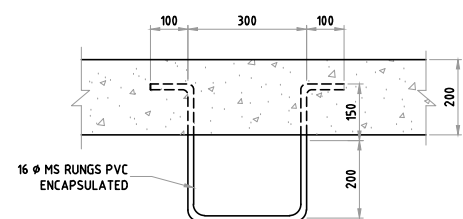
ELEVATION



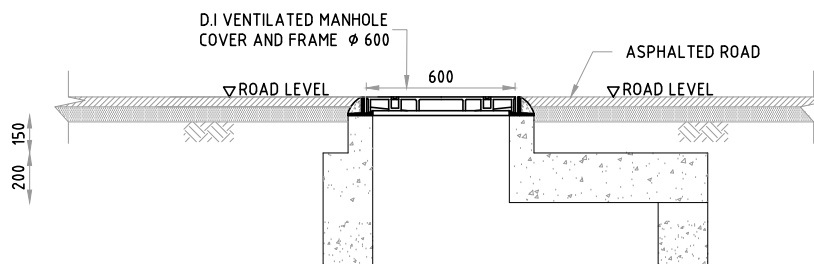
PLAN
GENERAL ARRANGEMENT & FITTINGS OF FLOW METER FOR Ø200 PIPE
SCALE 1:20



ROOF PLAN
SCALE 1:20



DETAIL - C
T16 MS RUNGS PVC ENCAPSULATED
SCALE 1:10



DETAILS OF COVER IN ASPHALT PAVEMENT
SCALE 1:15

TENDER PURPOSE

- All dimensions are in mm
- For location and depths of Gate valve chamber refer to drawings of pipeline plans and profiles.
- The specials and pipe fittings shall be selected to suit the supply pipe line
- All the valves, specials and pipes inside the chamber should be of Ductile iron
- Flow meter shall comply with BS 5150
- DI pipe & Fitting shall comply with BS 4772
- Building materials:-
Description of building materials is as follows
C 30 / 20 / S
Compressive strength of concrete Sulphate resistant cement
maximum size of aggregate

- Concrete:
a. mixes shall comply with BS 8110
b. minimum 28 day characteristic strength in accordance with BS 8110
- Cover to reinforcement to be 50mm.
- The steel used shall be of fy 350 grade.
- The tanking shall be with two layers of Bituminous Paint for external surfaces of Valve chamber
- Gate Valve Chamber to be provided for Pipe dia 200 to 300 mm
- MH Cover Should Comply to BS EN 124 Class D400

ABBREVIATIONS

- PIL - PIPE INVERT LEEL.
MS - MILD STEEL.
DI - DUCTILE IRON.
PE - POLY ETHYLENE
RCC - REINFORCED CEMENT CONCRETE
PCC - PLAIN CEMENT CONCRETE

| | | | | | | | |
|--|--|--|--|--|--|--|--|
| | | | | CLIENT MINISTRY OF ENVIRONMENT AND ENERGY MALE REPUBLIC OF MALDIVES | | | |
| | | | | PROJECT PROVISION OF RAINWATER HARVESTING SYSTEM IN 10 ISLANDS | | | |
| | | | | ASSIGNMENT CONSULTANCY SERVICES FOR DESIGN AND SUPERVISION OF RAINWATER HARVESTING SYSTEM IN SH. NOOMARA, SH. BILEHVAH, SH. FEYDHOO, SH. FEEVAH, SH. NARUDHOO, SH. LHAIMAGU, SH. FUNADHOO, N. HENBATHOO, N. LHOHL, N. MAGOODHOO, MALDIVES [PACKAGE - 2] | | | |
| | | | | DRAWING TITLE STANDARD DRAWING OF BULK FLOW METER CHAMBER | | | |
| | | | | REVISION | | | |
| | | | | APPROVED SSS CHECKED SSS DESIGNED SPP DRAWN PDP | | | |
| | | | | SCALE AS SHOWN DATE FEB 2018 DRAWING NUMBER WS/STD/01 REVISION 0 | | | |