



INFRASTRUCTURE UNIT

MALDIVES POLICE SERVICE

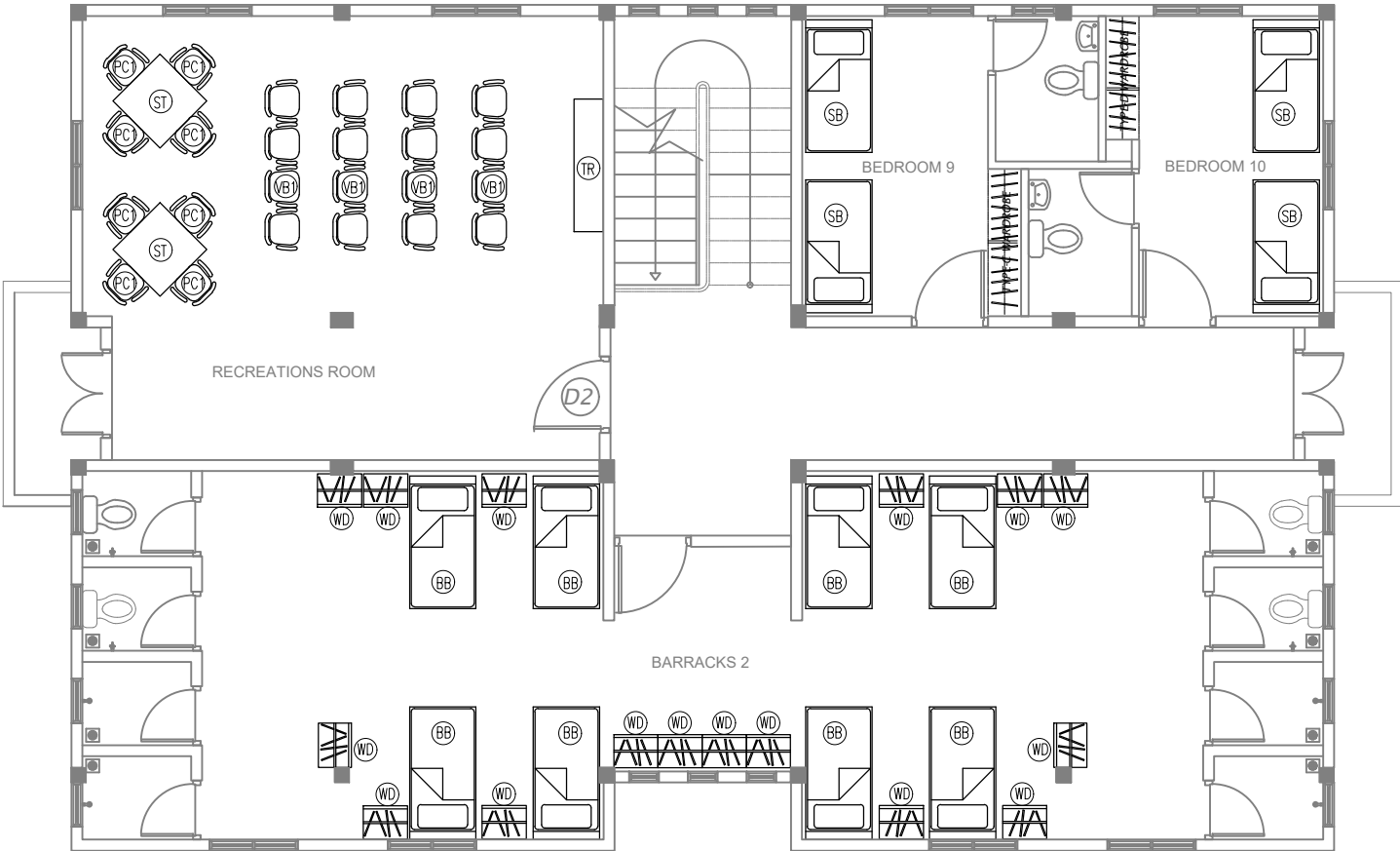
GAN POLICE 4 STOREY
POLICE ACCOMMODATION BUILDING

DESIGN APPROVED BY:

THE DRAWINGS, CONCEPT AND DESIGN CONTAINED AREA
THE PROPERTIES OF MALDIVES POLICE SERVICE. USE OF
ANY KIND OR COPY OF WHOLE OR PART OF THIS
DRAWING CONCEPT OR DESIGN OR USE ON OTHER
PROJECTS OR SITES OTHER THAN THAT SPECIFIED ON
THIS DRAWINGS IS STRICTLY PROHIBITED

CHECKED BY	CHECKED BY
------------	------------

A-04



SCALE 1:100