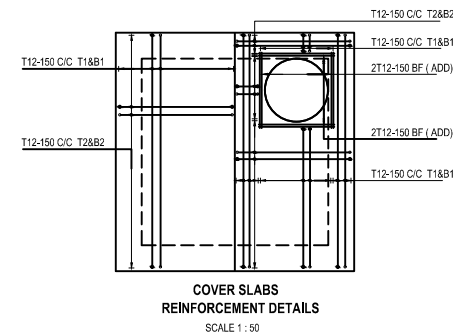
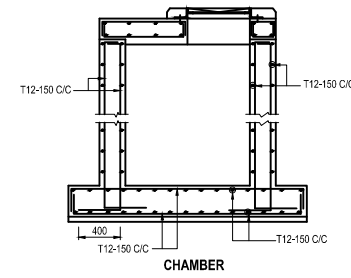


PIPE SCHEDULE			
No.	DESCRIPTION	LENGTH (mm)	QTY.
-	-	-	-
-	-	-	-
-	-	-	-
-	-	-	-

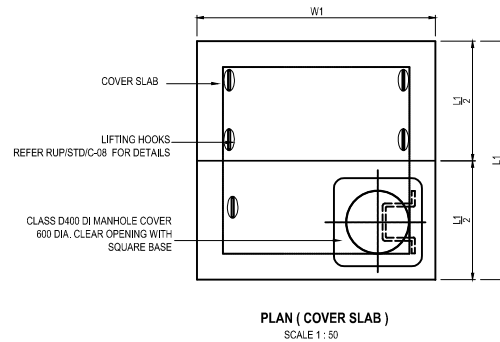
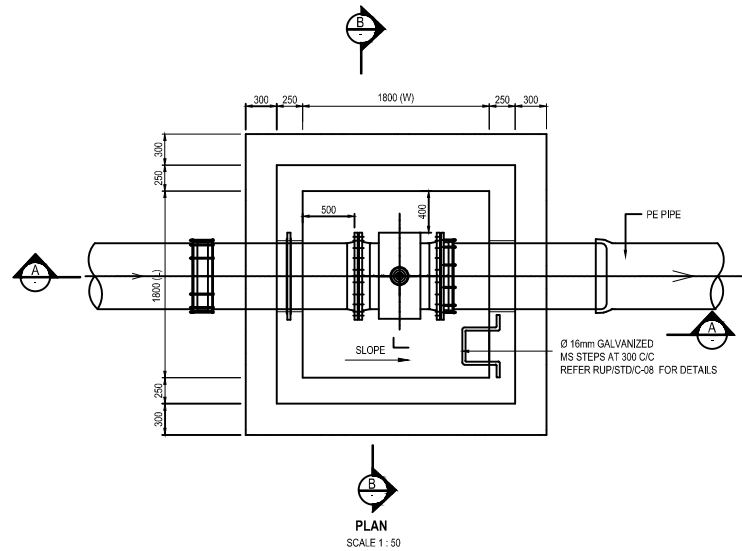
CHAMBER DETAILS		
PIPE DIA.	CHAMBER SIZE (mm)	SLAB SIZE (mm)
-	-	-
-	-	-
-	-	-



NOTES :

- MANHOLE COVERS SHALL BE OF HINGED HEAVY-DUTY (CLASS-D 400) WITH 600DIA. MINIMUM CLEAR OPENING.
- MANHOLE FRAME SHALL BE FIRMLY FIXED TO THE CHAMBER WITH 4 NOS. RAG BOLTS OR SIMILAR MANNER.
- STRUCTURAL CONCRETE SHALL BE GRADE 25.
- ALL INSITU CONCRETE SUPPORTS AND THRUST RESTRAINTS SHALL BE GRADE 20 UNLESS OTHERWISE STATED.
- CHAMBER TOP LEVEL TO BE MATCHED WITH FINAL ROAD FORMATION LEVEL.

SECTION A
SCALE 1 : 50



CLIENT:
MINISTRY OF ENVIRONMENT
AND ENERGY

CONSULTANCY SERVICES FOR DESIGN OF WATER SUPPLY FACILITIES IN Ha.HORAFUSHI,
Hdh.HANIMAADHOO,Sh.MILANDHOO,R.UNGOOFAARU,Lh.NAIFARU,Dh,KUDAHUVADHOO
,Th.GURAI DHOO AND Ga.VILLINGILI , MALDIVES

DESIGN

DRAWN

CHECKED

APPROVED

SL.NO

DRWING NO

DESCRIPTION

ENGINEER

DESIGN CHIEF

DATE

DRG.NO: FLOOR METRE CHAMBER

SCALE: NTS



GREENTECH CONSULTANTS (Pvt.) Ltd IN ASSOCIATION WITH
DEVELOPMENT COLLABORATION PARTNERSHIP (Pvt.) Ltd MALDIVES
AND OPTIMUM SOLOUTIONS (Pvt) Ltd, MALDIVES

TITLE:
FIOOR METRE CHAMBER