

LEGEND




FLUORESCENT LAMP C/W PFC CAPACITORS  
(230V, 50Hz, 4x36W)



ONE-WAY TWO GANG SWITCH  
230V, 10A, WITH EARTH TERMINAL



LIGHTING PANEL



SWITCHED SOCKET OUTLET 15A



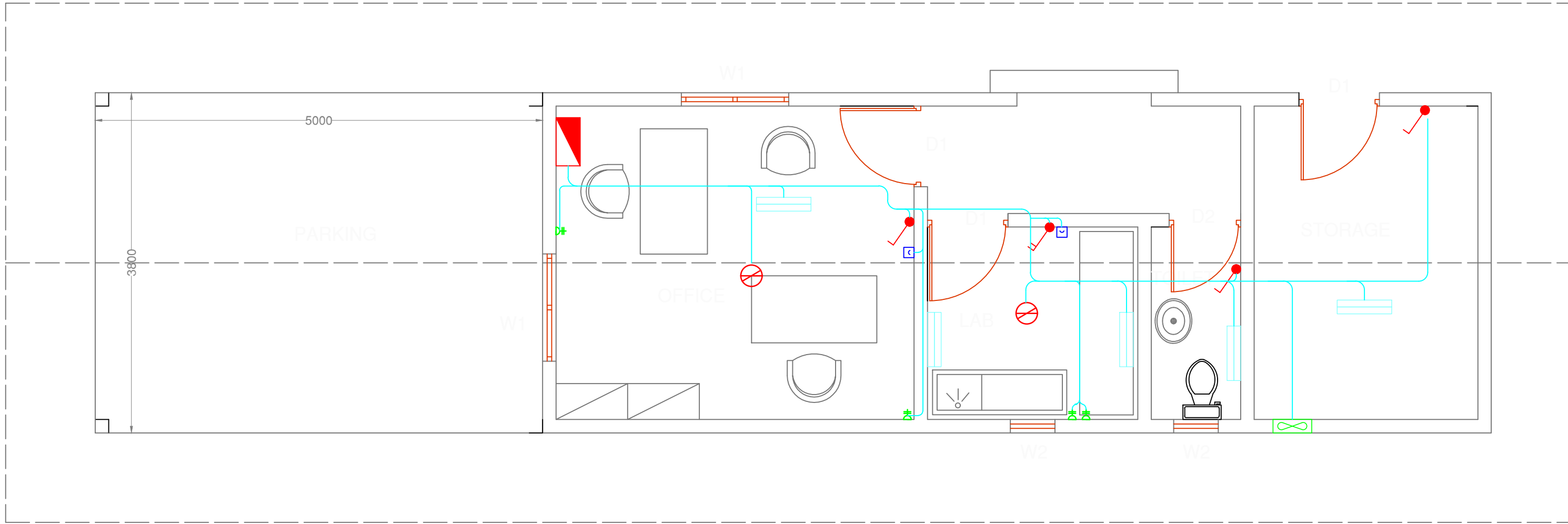
VENTILATOR FAN





CEILING FAN (1400mm)



FAN REGULATOR



FLOOR PLAN

	CLIENT: MINISTRY OF ENVIRONMENT AND ENERGY	CONSULTANCY SERVICES FOR DESIGN OF WATER SUPPLY FACILITIES IN Ha.HORAFUSHI, Hdh.HANIMAADHOO,Sh.MILANDHOO,R.UNGOOFAARU,Lh.NAIFARU,Dh,KUDAHUVADHOO ,Th.GUR Aidhoo AND Ga.VILLINGILI , MALDIVES	DESIGN	DRAWN	CHECKED	APPROVED	SL.NO	DRWING NO	DESCRIPTION
			ENGINEER			DESIGN CHIEF			
			DATE	DRG.NO: HOARAFUSHI/ADMIN/ELE SCALE: 1 : 500					
	GREENTECH CONSULTANTS (Pvt.) Ltd IN ASSOCIATION WITH DEVELOPMENT COLLABORATION PARTNERSHIP (Pvt.) Ltd MALDIVES AND OPTIMUM SOLOUTIONS (Pvt) Ltd, MALDIVES	REVERSE OSMOSIS UNIT STRUCTURAL PLANS HOARAFUSHI							