

BUILDING SERVICES DRAWINGS OF  
PROPOSED 03 STOREY  
**MULTI PURPOSE HALL AND FOUR CLASSROOM  
BLOCK, N. LANDHOO**  
For Ministry Of Education

By Epoch Associates Pvt. Ltd



**EPOCH**

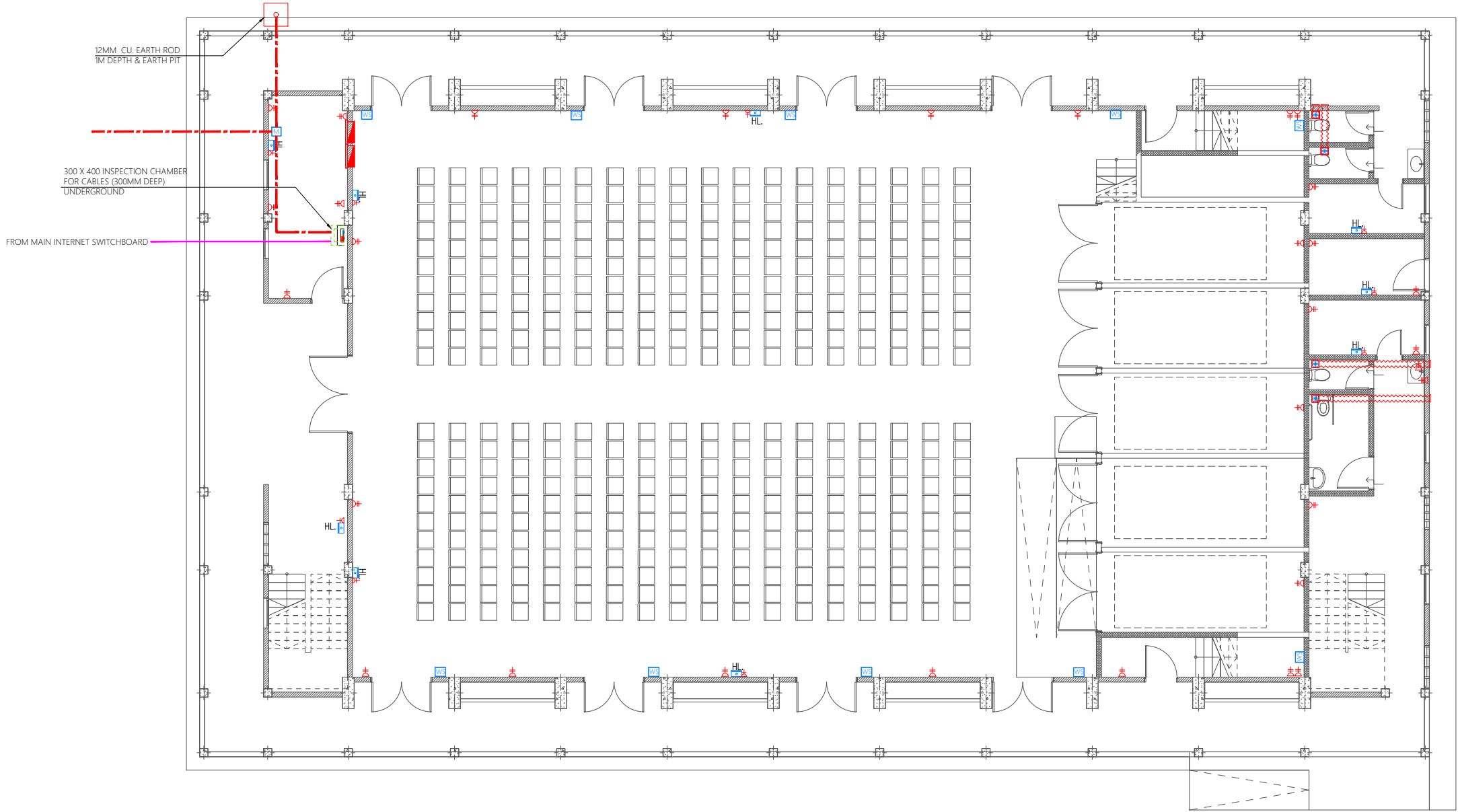
**T:** +960 333 3528 **E:** info@epoch.associates **W:** www.epoch.associates  
**A:** 3rd Floor, G.Rosary West, Husnuheena Magu, Male' Republic of Maldives

Legend

- 13A Twin Socket
- 13A Power Socket
- Distribution Board
- HL. High Level
- Computer Network Outlet
- Emergency Light
- Wall Mounted Speaker
- Electricity Meter
- Public Address System
- Computer Network Twin Outlet
- HDMI Socket

- Ceiling Mounted Exhaust Fan 90m3/hr
- Main Incoming Cable For Power PVC Duct Below Ground
- 82Ø PVC Duct For Internet Cables Lead In Below Ground Slab

Notes: -  
- All Twin Sockets At 300mm From F.F.L. Except Stated Otherwise  
- All Computer, Telephone Points At 300mm From F.F.L.  
- All electrical components shall be connected to respective Distribution Box in the same area as the component.  
- All electrical components in common areas, corridors and staircase should be connected to Common Area DB  
- Wall Speaker shall be connected to Public address system of school



GROUND FLOOR POWER AND ACV LAYOUT  
1:150




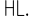







PROPOSED 03 STOREY  
**MULTIPURPOSE  
HALL AND FOUR  
CLASSROOM  
BLOCK,  
N. LANDHOO**  
Client:  
**Ministry Of Education**




June 2021  
Services By: **Mohamed Rassam**  
Checked By:  
Drawn By: **Hussain Rasheed**

**EPOCH**  
T: +960 333 3528, E: info@epoch.associates  
W: www.epoch.associates, A: G. Rosary West,  
Husnuheena Magu, Male' Republic of Maldives

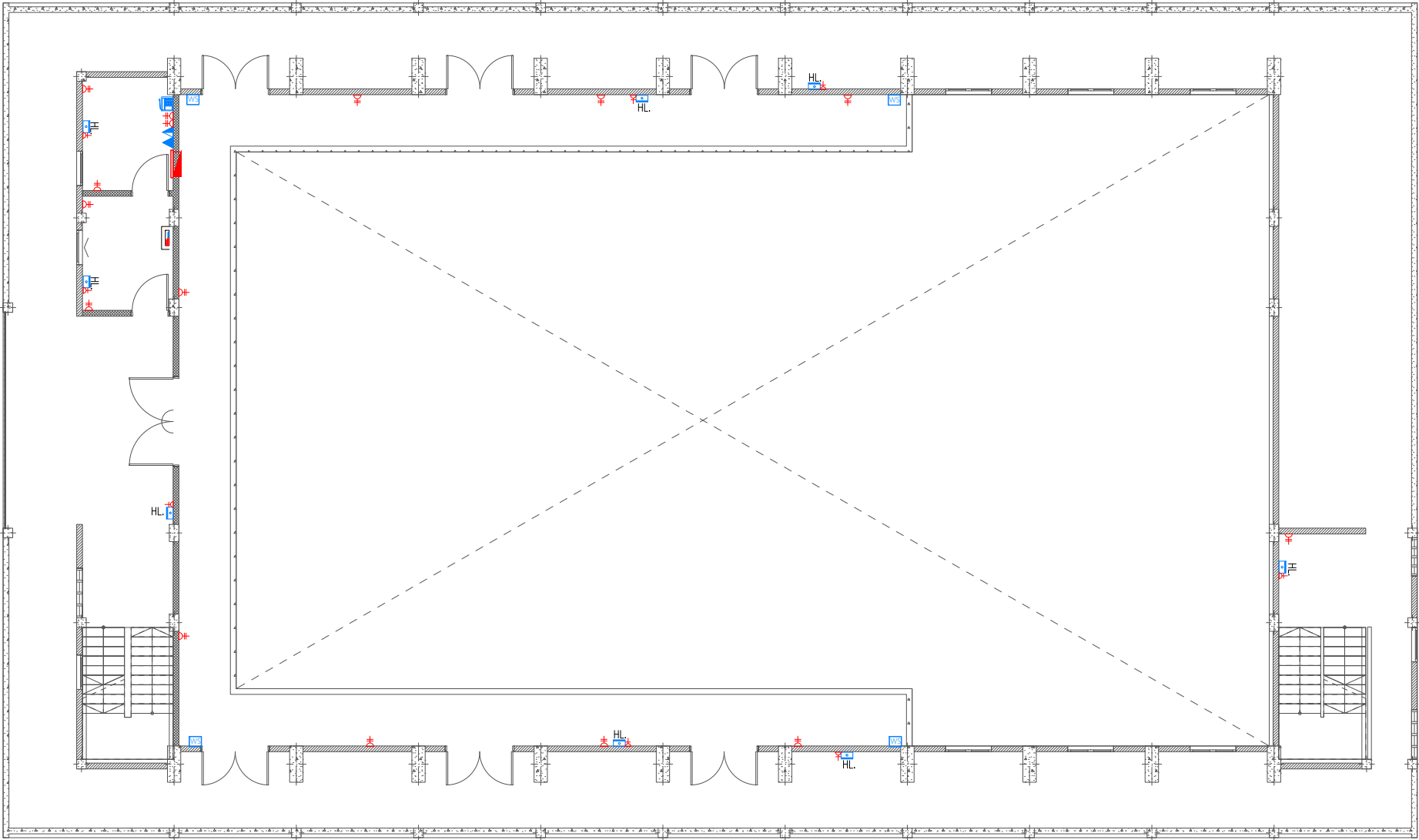
Rev: ---  
Page: PAC-01

Legend

-  13A Twin Socket
-  13A Power Socket
-  Distribution Board
-  HL. High Level
-  Computer Network Outlet
-  Emergency Light
-  WS Wall Mounted Speaker
-  M Electricity Meter
-  Public Address System
-  Computer Network Twin Outlet
-  HDMI Socket

-  Ceiling Mounted Exhaust Fan 90m3/hr
-  Main Incoming Cable For Power PVC Duct Below Ground
-  82Ø PVC Duct For Internet Cables Lead In Below Ground Slab

Notes: -  
- All Twin Sockets At 300mm From F.F.L. Except Stated Otherwise  
- All Computer, Telephone Points At 300mm From F.F.L.  
- All electrical components shall be connected to respective Distribution Box in the same area as the component.  
- All electrical components in common areas, corridors and staircase should be connected to Common Area DB  
- Wall Speaker shall be connected to Public address system of school



FIRST FLOOR POWER AND ACV LAYOUT  
1:150

PROPOSED 03 STOREY  
**MULTIPURPOSE  
HALL AND FOUR  
CLASSROOM  
BLOCK,  
N. LANDHOO**  
Client:  
**Ministry Of Education**

June 2021  
Services By: Mohamed Rassam  
Checked By:  
Drawn By: Hussain Rasheed

  
**EPOCH**  
T: +960 333 3528, E: info@epoch.associates  
W: www.epoch.associates, A: G. Rosary West,  
Husnuheena Magu, Male' Republic of Maldives

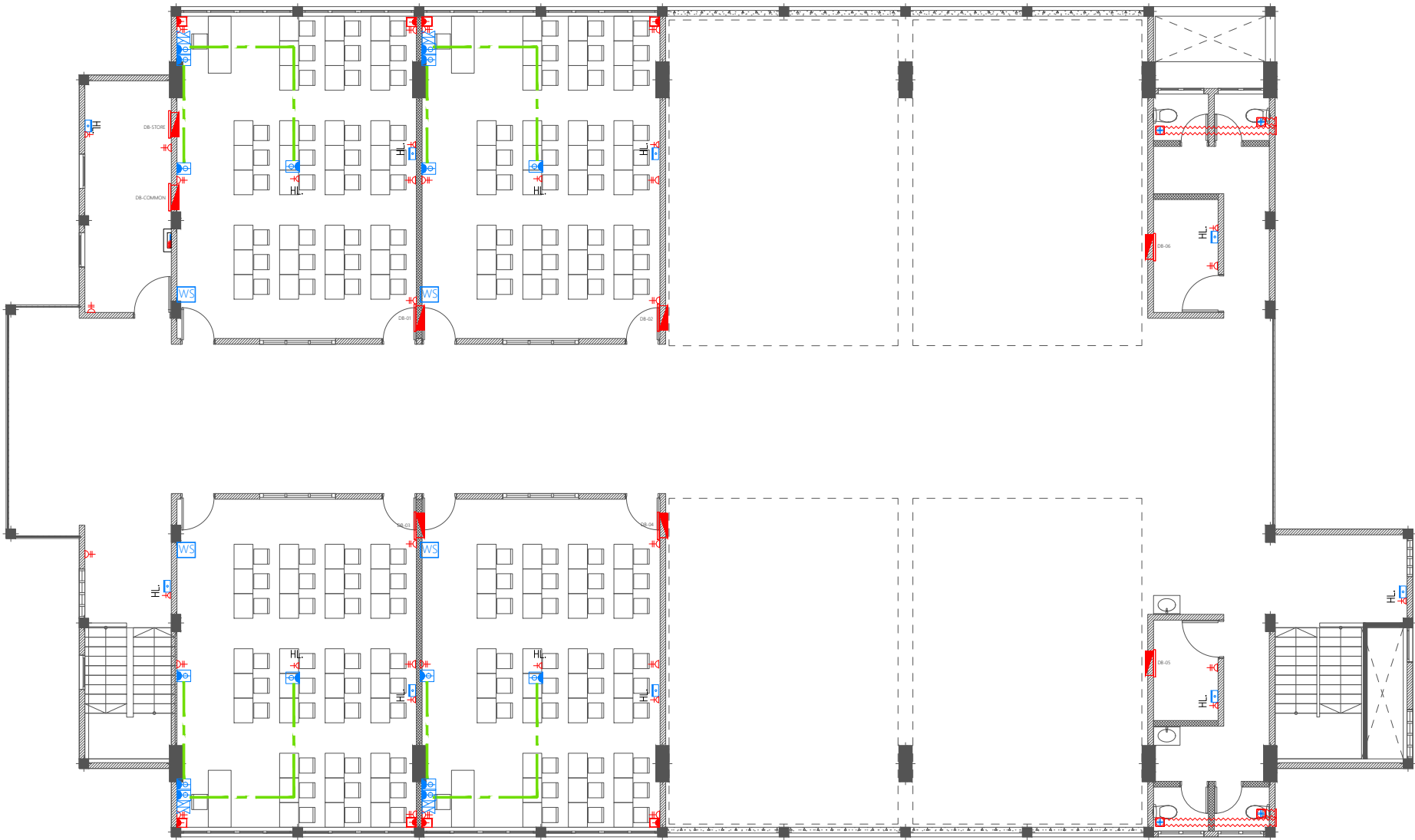
Rev: ---  
Page: PAC-02

Legend

- 13A Twin Socket
- 13A Power Socket
- 15A Switched Socket @ H.L.
- Distribution Board
- HL. High Level
- Computer Network Outlet
- Emergency Light
- WS Wall Mounted Speaker
- M Electricity Meter
- Public Address System
- Computer Network Twin Outlet
- HDMI Socket

- Ceiling Mounted Exhaust Fan 90m3/hr
- Main Incoming Cable For Power PVC Duct Below Ground
- 82Ø PVC Duct For Internet Cables Lead In Below Ground Slab

Notes: -  
- All Twin Sockets At 300mm From F.F.L. Except Stated Otherwise  
- All Computer, Telephone Points At 300mm From F.F.L.  
- All electrical components shall be connected to respective Distribution Box in the same area as the component.  
- All electrical components in common areas, corridors and staircase should be connected to Common Area DB  
- Wall Speaker shall be connected to Public address system of school



SECOND FLOOR POWER AND ACV LAYOUT  
1:150












PROPOSED 03 STOREY  
**MULTIPURPOSE  
HALL AND FOUR  
CLASSROOM  
BLOCK,  
N. LANDHOO**  
Client:  
**Ministry Of Education**

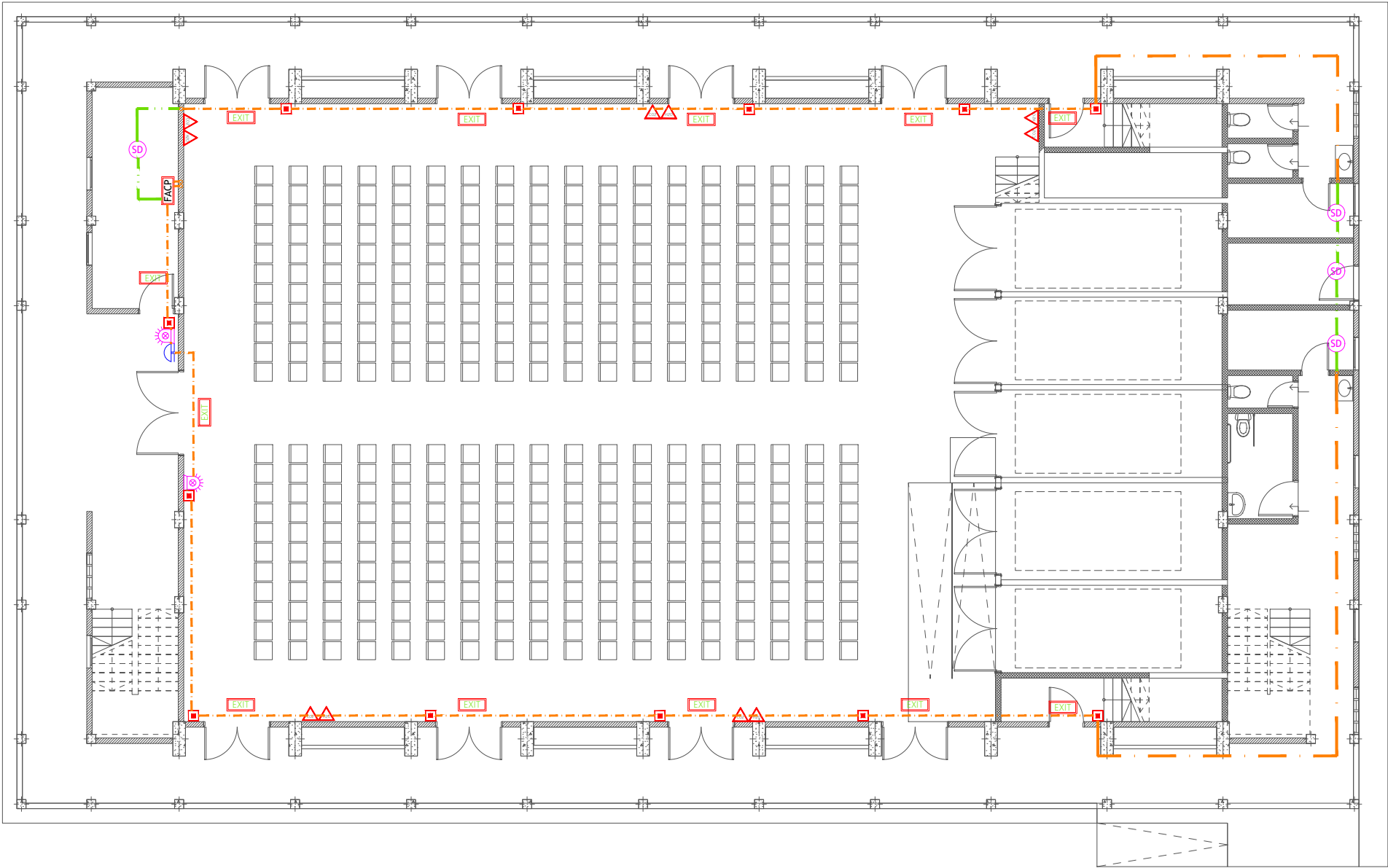
June 2021  
Services By: **Mohamed Rassam**  
Checked By:  
Drawn By: **Hussain Rasheed**

  
**EPOCH**  
T: +960 333 3528, E: info@epoch.associates  
W: www.epoch.associates, A: G. Rosary West,  
Husnuheena Magu, Male' Republic of Maldives

Rev: ---  
Page: PAC-03

Legend

-  CO<sub>2</sub> Extinguisher (load: 2kg) In Polycarbonate Enclosure
-  DCP Extinguisher (load: 6kg) In Polycarbonate Enclosure
-  H<sub>2</sub>O Extinguisher (load: 9L) In Polycarbonate Enclosure
-  Manual Call Point (At 1200mm from F.F.L.)
-  Smoke Detector
-  Beacon
-  Sounder Bell
-  2.5mm<sup>2</sup> Fire Retardant Low Smoke (FRLS) Cables In FRLS Conduits (Running Underground)
-  2.5mm<sup>2</sup> Fire Retardant Low Smoke (FRLS) Cables In FRLS Conduits (Above False Ceiling or Through Slab)
-  Fire Alarm Control Panel
-  Exit Sign



GROUND FLOOR FDP LAYOUT  
1:150












PROPOSED 03 STOREY  
**MULTIPURPOSE  
HALL AND FOUR  
CLASSROOM  
BLOCK,  
N. LANDHOO**  
Client:  
**Ministry Of Education**

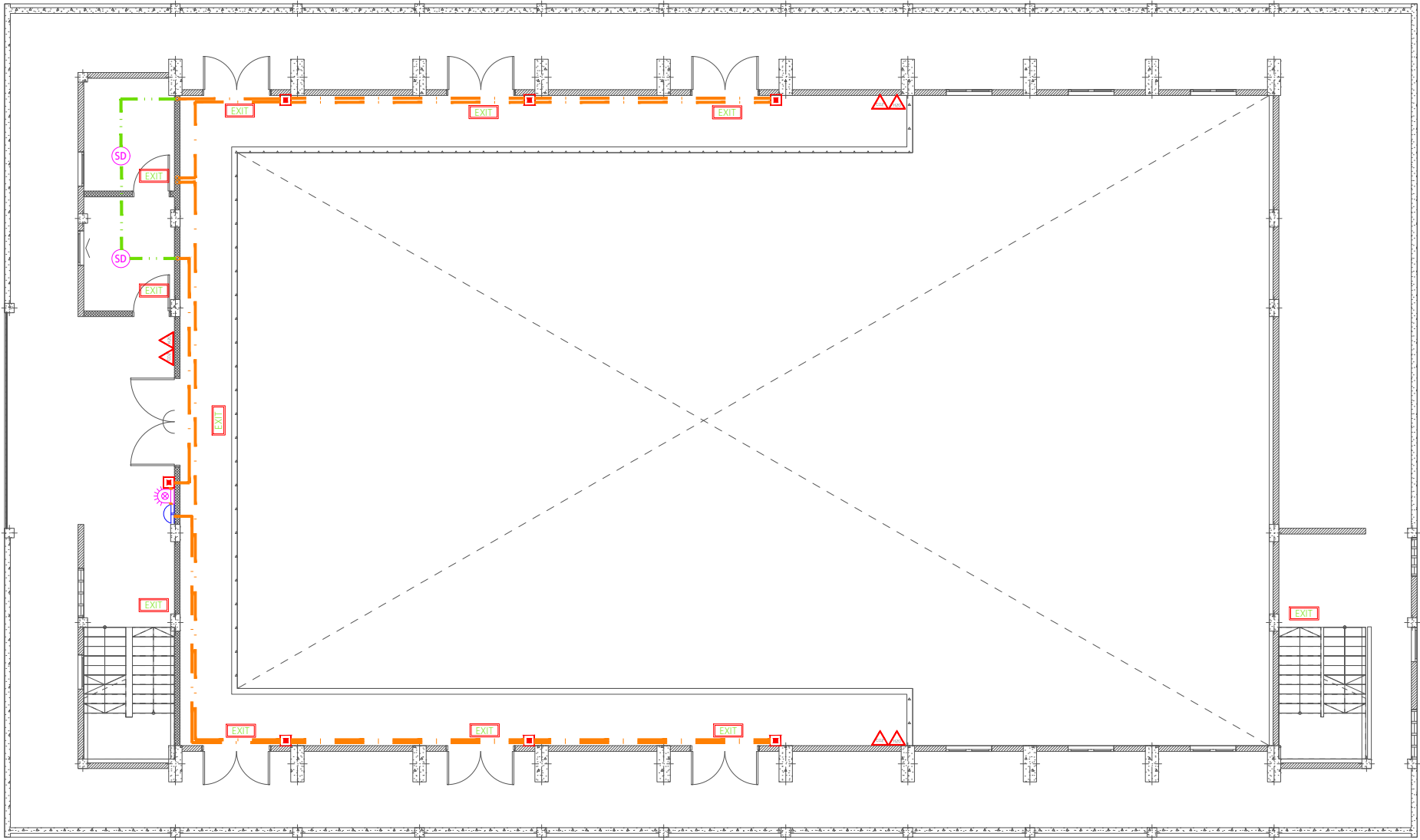
June 2021  
Services By: Mohamed Rassam  
Checked By:  
Drawn By: Hussain Rasheed

  
**EPOCH**  
T: +960 333 3528, E: info@epoch.associates  
W: www.epoch.associates, A: G. Rosary West,  
Husnuheena Magu, Male' Republic of Maldives

Rev:	Page:
---	FDP -01
---	---
---	---

Legend

-  CO<sub>2</sub> Extinguisher (load: 2kg) In Polycarbonate Enclosure
-  DCP Extinguisher (load: 6kg) In Polycarbonate Enclosure
-  H<sub>2</sub>O Extinguisher (load: 9L) In Polycarbonate Enclosure
-  Manual Call Point (At 1200mm from F.F.L.)
-  Smoke Detector
-  Beacon
-  Sounder Bell
-  2.5mm<sup>2</sup> Fire Retardant Low Smoke (FRLS) Cables In FRLS Conduits (Running Underground)
-  2.5mm<sup>2</sup> Fire Retardant Low Smoke (FRLS) Cables In FRLS Conduits (Above False Ceiling or Through Slab)
-  Fire Alarm Control Panel
-  Exit Sign



FIRST FLOOR FDP LAYOUT  
1:150

PROPOSED 03 STOREY  
**MULTIPURPOSE  
HALL AND FOUR  
CLASSROOM  
BLOCK,  
N. LANDHOO**  
Client:  
**Ministry Of Education**












June 2021

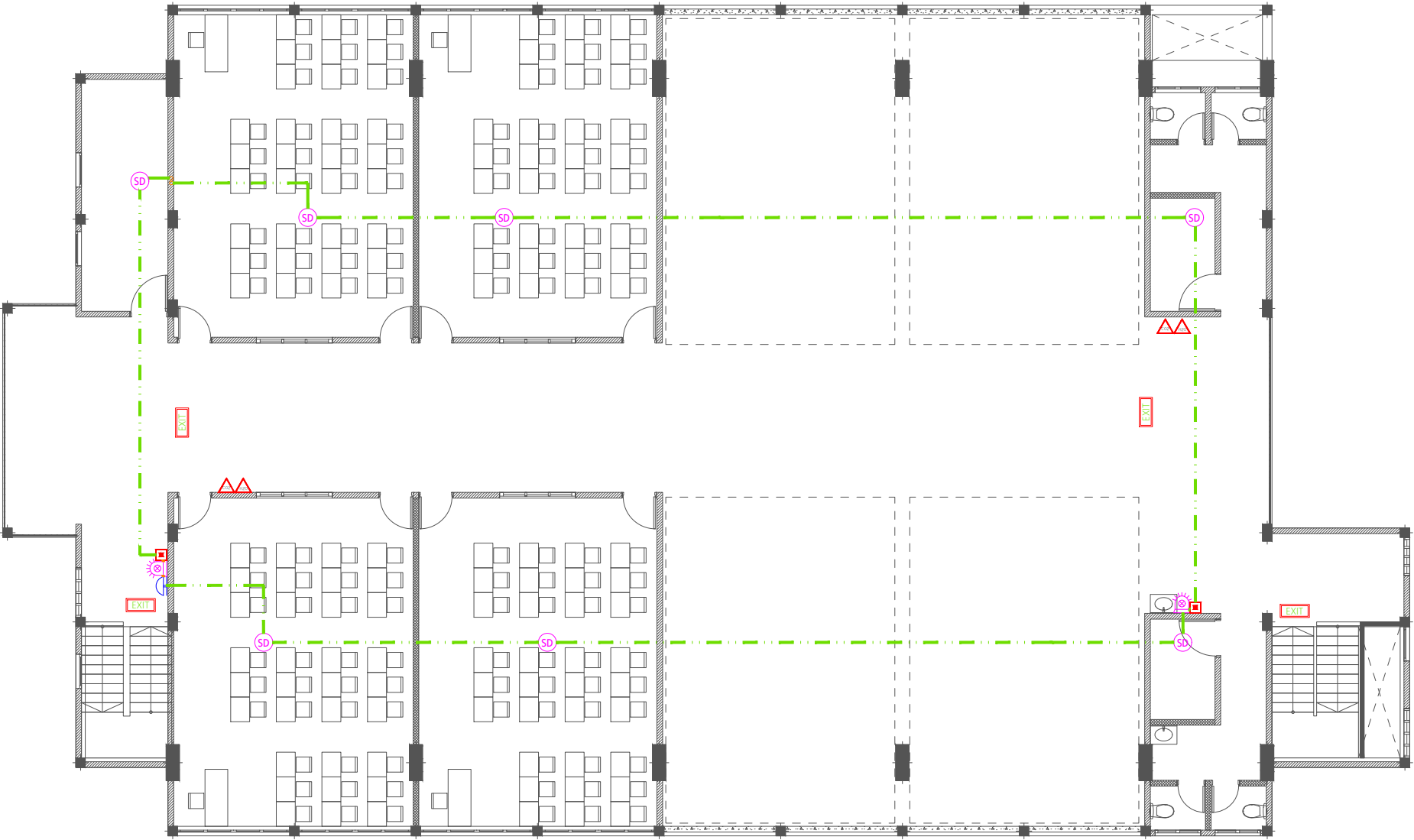
Services By: Mohamed Rassam  
Checked By:  
Drawn By: Hussain Rasheed

  
**EPOCH**  
T: +960 333 3528, E: info@epoch.associates  
W: www.epoch.associates, A: G. Rosary West,  
Husnuheena Magu, Male' Republic of Maldives

Rev:	Page:
---	FDP -02
---	---
---	---

Legend

-  CO<sub>2</sub> Extinguisher (load: 2kg) In Polycarbonate Enclosure
-  DCP Extinguisher (load: 6kg) In Polycarbonate Enclosure
-  H<sub>2</sub>O Extinguisher (load: 9L) In Polycarbonate Enclosure
-  Manual Call Point (At 1200mm from F.F.L.)
-  Smoke Detector
-  Beacon
-  Sounder Bell
-  2.5mm<sup>2</sup> Fire Retardant Low Smoke (FRLS) Cables In FRLS Conduits (Running Underground)
-  2.5mm<sup>2</sup> Fire Retardant Low Smoke (FRLS) Cables In FRLS Conduits (Above False Ceiling or Through Slab)
-  Fire Alarm Control Panel
-  Exit Sign



SECOND FLOOR FDP LAYOUT  
1:150

PROPOSED 03 STOREY  
**MULTIPURPOSE  
HALL AND FOUR  
CLASSROOM  
BLOCK,  
N. LANDHOO**  
Client:  
**Ministry Of Education**











June 2021

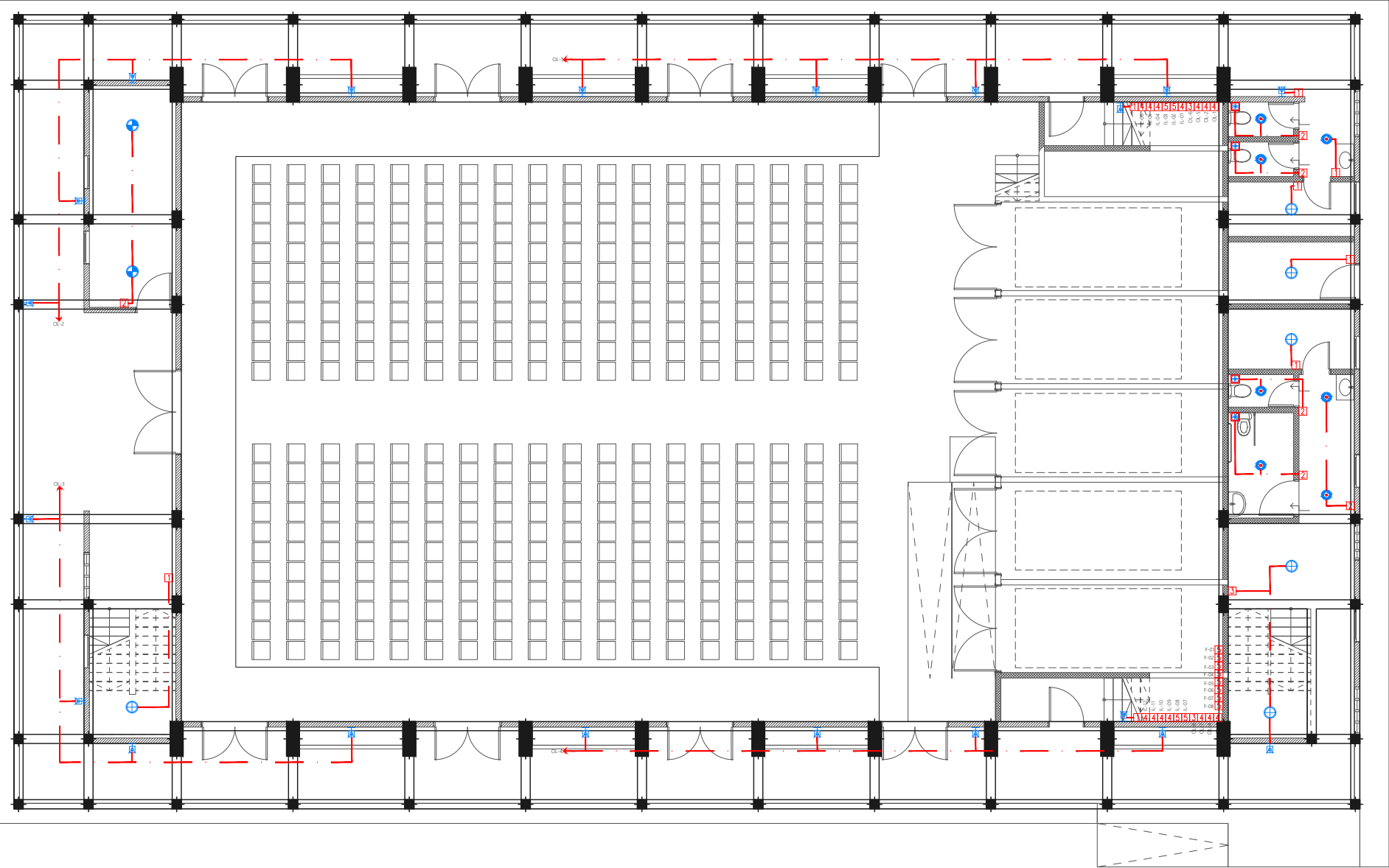
Services By: Mohamed Rassam  
Checked By:  
Drawn By: Hussain Rasheed

  
**EPOCH**  
T: +960 333 3528, E: info@epoch.associates  
W: www.epoch.associates, A: G. Rosary West,  
Husnuheena Magu, Male' Republic of Maldives

Rev:	Page:
---	FDP -03
---	
---	

Legend

-  Ceiling Light (18W)
-  Ceiling Light (12W)
-  Recessed Ceiling Light (12W)
-  Ceiling Down Light (18W) - Weather Proof
-  Weather Proof Wall Light IP55 (12W)
-  3 Ft Led Tube Light
-  2 x 50W PLL Tube Light
-  Light and Fan Switch (1 Gang - 5 Gang)
-  42" To 48" Ceiling Fan
-  Ceiling Mounted Exhaust Fan 90m3/hr



GROUND FLOOR LIGHTING LAYOUT  
1:150

PROPOSED 03 STOREY  
**MULTIPURPOSE  
HALL AND FOUR  
CLASSROOM  
BLOCK,  
N. LANDHOO**  
Client:  
**Ministry Of Education**











June 2021  
Services By: **Mohamed Rassam**  
Checked By:  
Drawn By: **Hussain Rasheed**

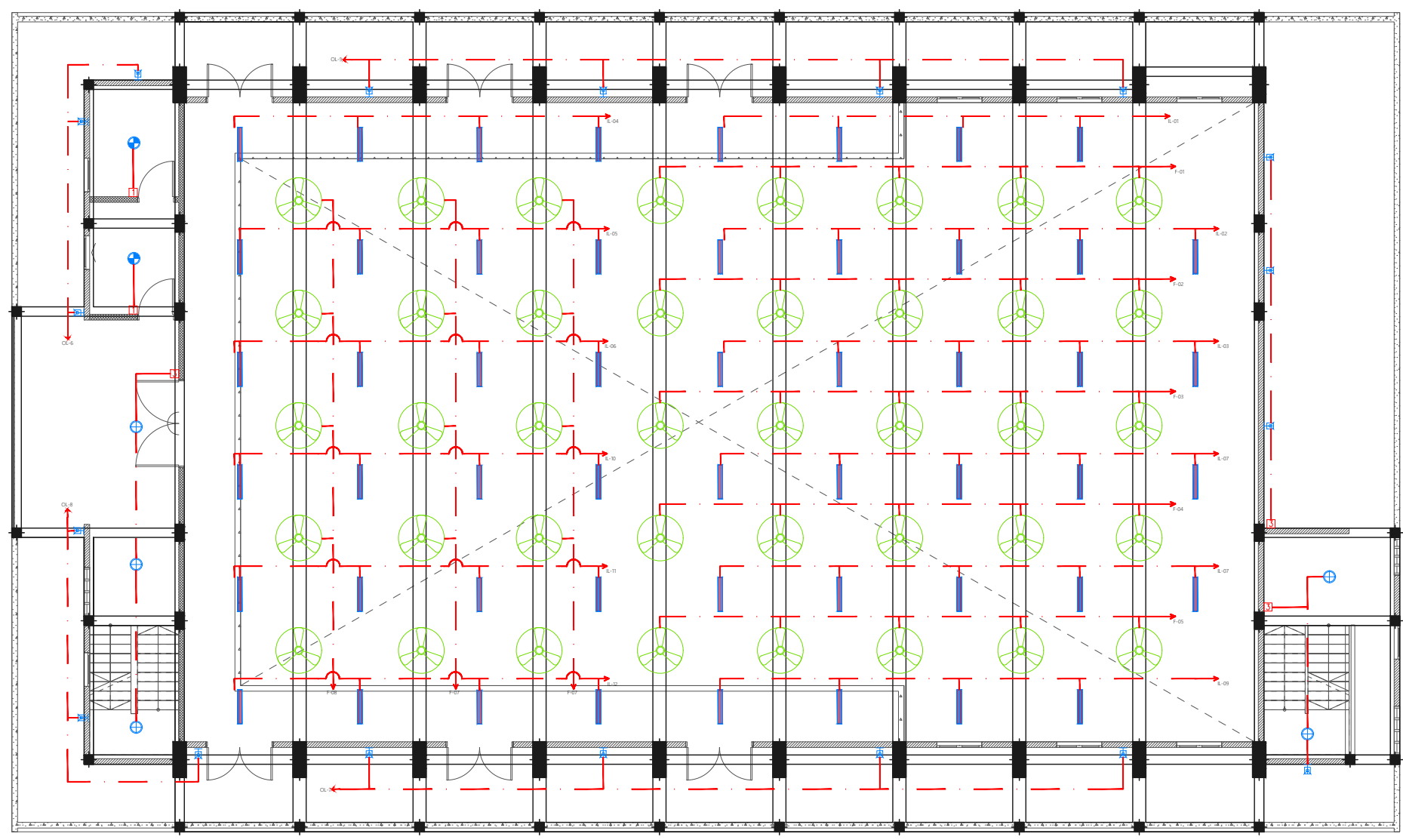
  
**EPOCH**  
T: +960 333 3528, E: info@epoch.associates  
W: www.epoch.associates, A: G. Rosary West,  
Husnuheena Magu, Male' Republic of Maldives

Rev:	Page:
---	EL -01
---	
---	



Legend

-  Ceiling Light (18W)
-  Ceiling Light (12W)
-  Recessed Ceiling Light (12W)
-  Ceiling Down Light (18W) - Weather Proof
-  Weather Proof Wall Light IP55 (12W)
-  3 Ft Led Tube Light
-  2 x 50W PLL Tube Light
-  Light and Fan Switch (1 Gang - 5 Gang)
-  42" To 48" Ceiling Fan
-  Ceiling Mounted Exhaust Fan 90m3/hr













PROPOSED 03 STOREY  
**MULTIPURPOSE  
HALL AND FOUR  
CLASSROOM  
BLOCK,  
N. LANDHOO**  
Client:  
**Ministry Of Education**

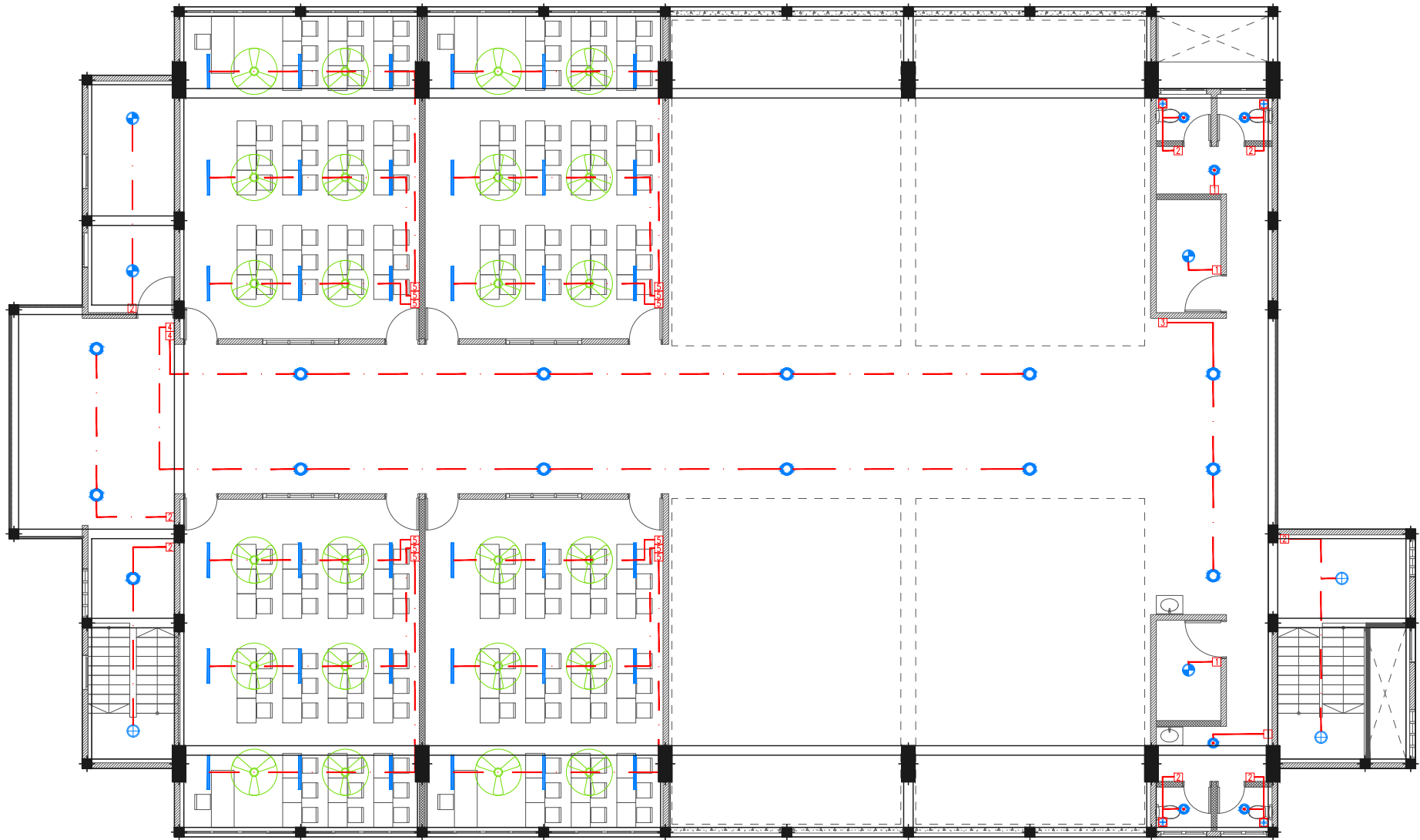
June 2021  
Services By: Mohamed Rassam  
Checked By:  
Drawn By: Hussain Rasheed

  
**EPOCH**  
T: +960 333 3528, E: info@epoch.associates  
W: www.epoch.associates, A: G. Rosary West,  
Husnuheena Magu, Male' Republic of Maldives

Rev:	Page:
---	EL -02
---	
---	

Legend

-  Ceiling Light (18W)
-  Ceiling Light (12W)
-  Recessed Ceiling Light (12W)
-  Ceiling Down Light (18W) - Weather Proof
-  Weather Proof Wall Light IP55 (12W)
-  3 Ft Led Tube Light
-  2 x 50W PLL Tube Light
-  Light and Fan Switch (1 Gang - 5 Gang)
-  42" To 48" Ceiling Fan
-  Ceiling Mounted Exhaust Fan 90m3/hr



SECOND FLOOR LIGHTING LAYOUT  
1:150

PROPOSED 03 STOREY  
**MULTIPURPOSE  
HALL AND FOUR  
CLASSROOM  
BLOCK,  
N. LANDHOO**  
Client:  
**Ministry Of Education**

June 2021  
Services By: Mohamed Rassam  
Checked By:  
Drawn By: Hussain Rasheed

  
**EPOCH**  
T: +960 333 3528, E: info@epoch.associates  
W: www.epoch.associates, A: G. Rosary West,  
Husnuheena Magu, Male' Republic of Maldives

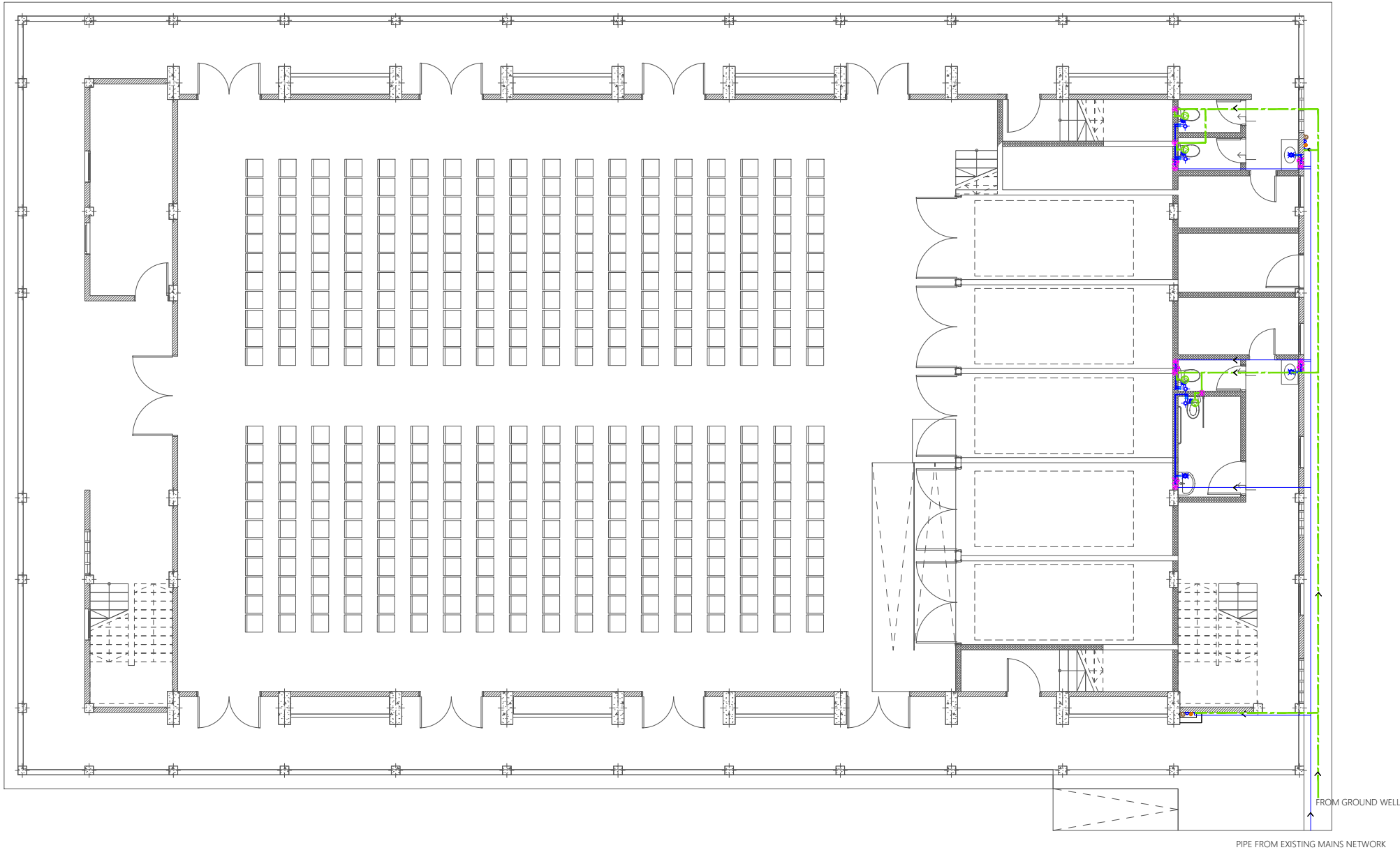
Rev:	Page:
---	EL -03
---	---
---	---

Legend

- 16Ø Cold Water Supply To Basin Faucet
- 16Ø Cold Water Supply To Bidet Shower
- 16Ø Cold Water Supply To Cistern
- Gate Valve
- Rise In Wall
- Drop In Wall
- Angle Valve with cap for Ground Water Supply
- 25Ø Cold Water Supply Pipes Running Underground
- 20Ø Cold Water Supply Pipes Running In Wall
- 20Ø Cold Water Supply Pipes Running Above False Ceiling
- 20Ø Cold Water Supply Pipes Running Underground
- 25Ø Ground Water Supply Pipes

Notes: -

- All Cold Water Pipes Should Be PVC
- SII Hot Water Pipes Should Be PPR



GROUND FLOOR PLUMBING LAYOUT

1:150

PROPOSED 03 STOREY  
**MULTIPURPOSE  
HALL AND FOUR  
CLASSROOM  
BLOCK,  
N. LANDHOO**  
Client:  
**Ministry Of Education**

June 2021

Services By: **Mohamed Rassam**  
Checked By:  
Drawn By: **Hussain Rasheed**



**EPOCH**

T: +960 333 3528, E: info@epoch.associates  
W: www.epoch.associates, A: G. Rosary West,  
Husnuheena Magu, Male' Republic of Maldives

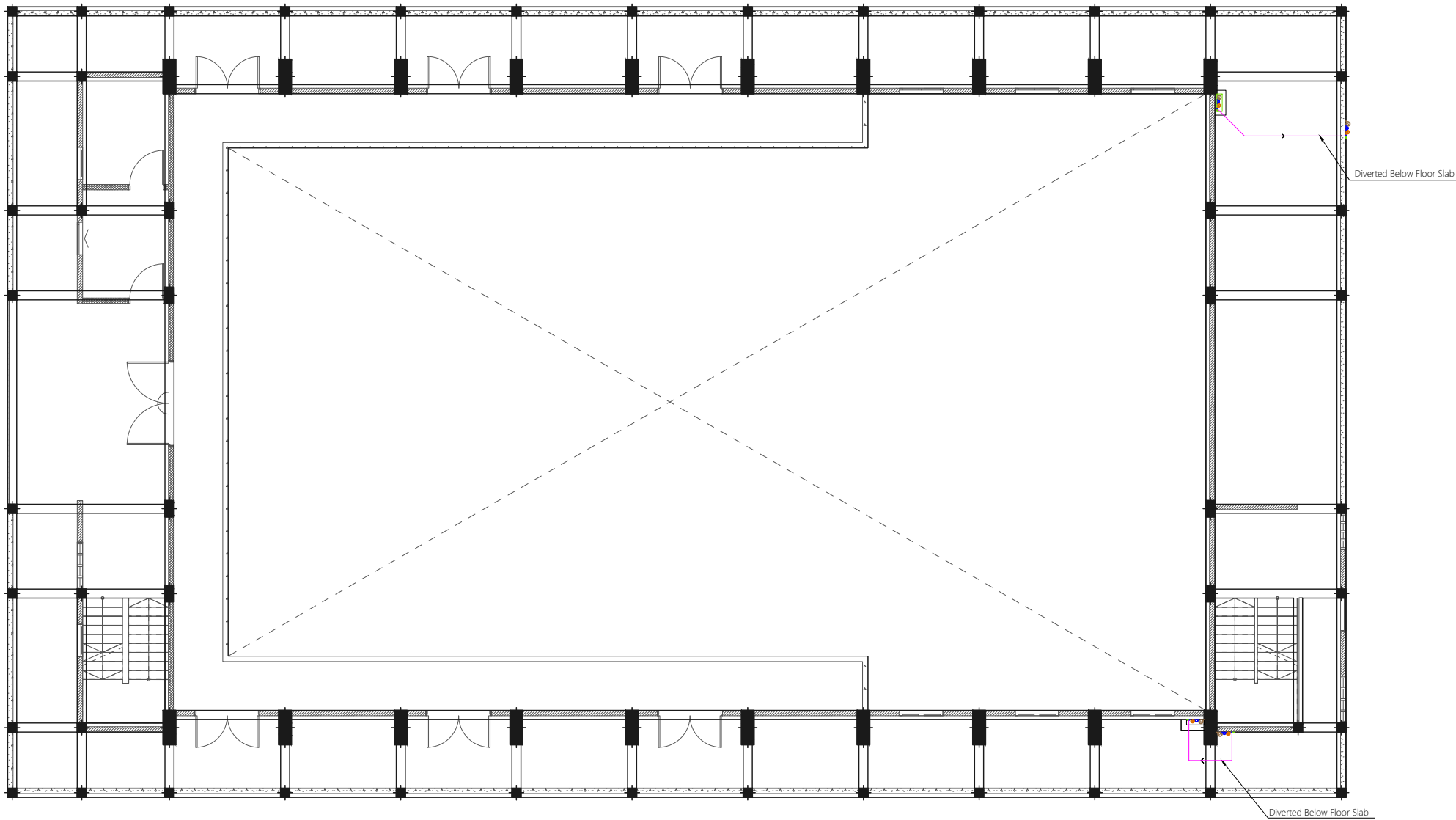
Rev:	Page:
---	PL -01
---	
---	

Legend

- 16Ø Cold Water Supply To Basin Faucet
- 16Ø Cold Water Supply To Bidet Shower
- 16Ø Cold Water Supply To Cistern
- Gate Valve
- Rise In Wall
- Drop In Wall
- Angle Valve with cap for Ground Water Supply
- 25Ø Cold Water Supply Pipes Running Underground
- 20Ø Cold Water Supply Pipes Running In Wall
- 20Ø Cold Water Supply Pipes Running Above False Ceiling
- 20Ø Cold Water Supply Pipes Running Underground
- 25Ø Ground Water Supply Pipes

Notes: -

- All Cold Water Pipes Should Be PVC
- SII Hot Water Pipes Should Be PPR



FIRST FLOOR PLUMBING LAYOUT  
1:150

PROPOSED 03 STOREY  
**MULTIPURPOSE  
HALL AND FOUR  
CLASSROOM  
BLOCK,  
N. LANDHOO**  
Client:  
**Ministry Of Education**

June 2021  
Services By: **Mohamed Rassam**  
Checked By:  
Drawn By: **Hussain Rasheed**

  
**EPOCH**  
T: +960 333 3528, E: info@epoch.associates  
W: www.epoch.associates, A: G. Rosary West,  
Husnuheena Magu, Male' Republic of Maldives

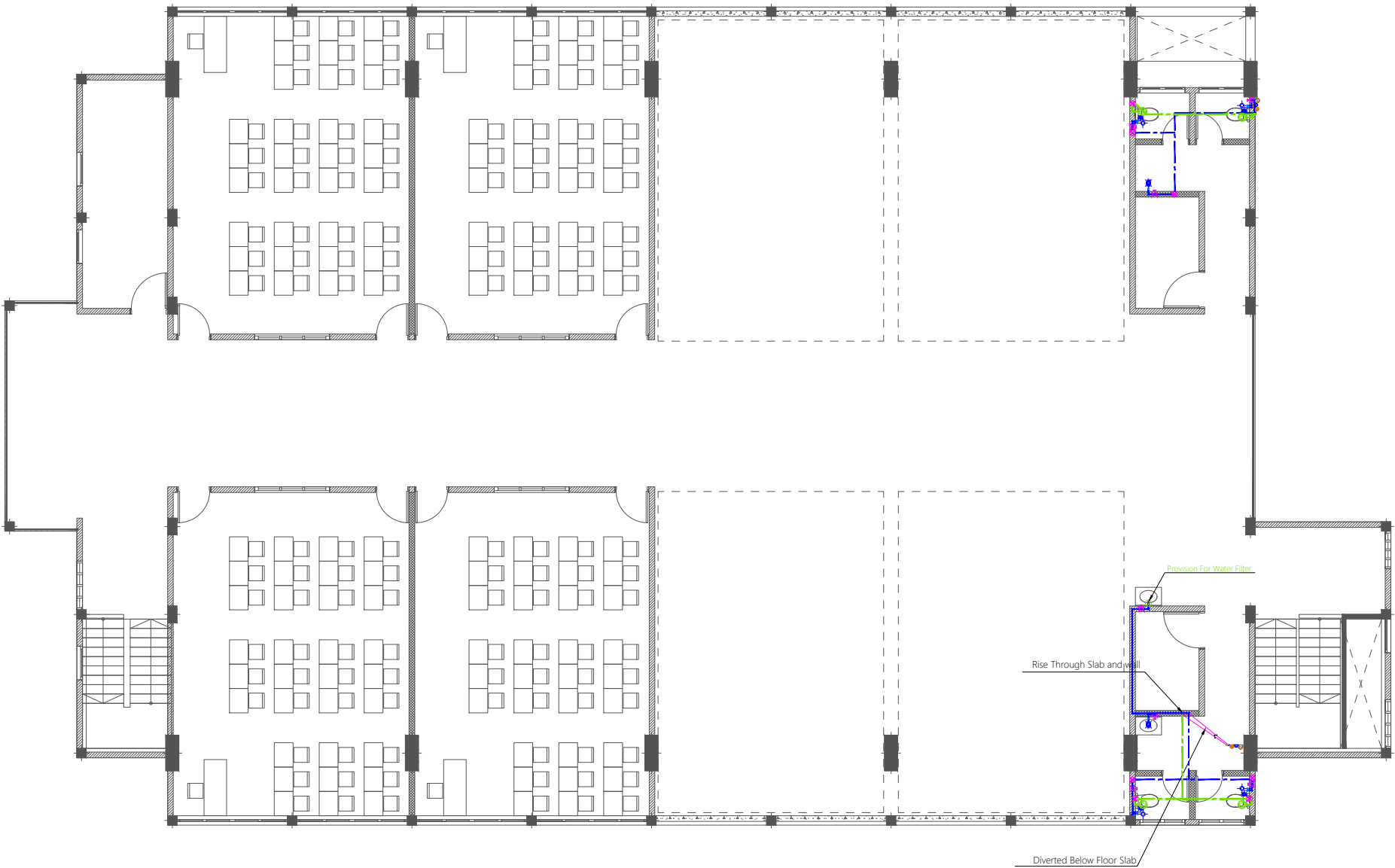
Rev:	Page:
---	PL -02
---	
---	

Legend

- 16Ø Cold Water Supply To Basin Faucet
- 16Ø Cold Water Supply To Bidet Shower
- 16Ø Cold Water Supply To Cistern
- Gate Valve
- Rise In Wall
- Drop In Wall
- Angle Valve with cap for Ground Water Supply
- 25Ø Cold Water Supply Pipes Running Underground
- 20Ø Cold Water Supply Pipes Running In Wall
- 20Ø Cold Water Supply Pipes Running Above False Ceiling
- 20Ø Cold Water Supply Pipes Running Underground
- 25Ø Ground Water Supply Pipes

Notes: -

- All Cold Water Pipes Should Be PVC
- SII Hot Water Pipes Should Be PPR



SECOND FLOOR PLUMBING LAYOUT

1:150

PROPOSED 03 STOREY  
**MULTIPURPOSE  
HALL AND FOUR  
CLASSROOM  
BLOCK,  
N. LANDHOO**

Client:  
**Ministry Of Education**

June 2021

Services By: **Mohamed Rassam**  
Checked By:  
Drawn By: **Hussain Rasheed**



**EPOCH**

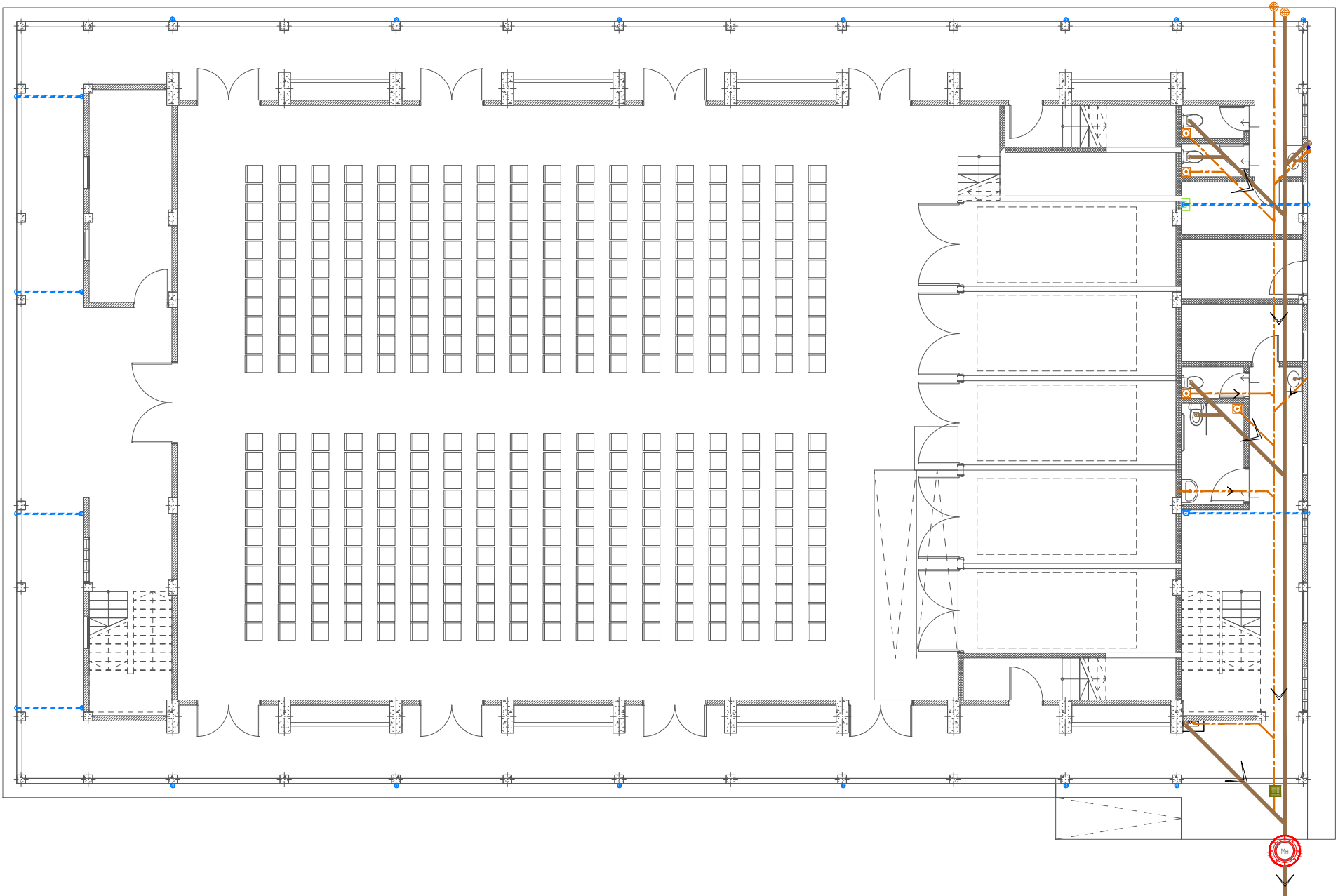
T: +960 333 3528, E: info@epoch.associates  
W: www.epoch.associates, A: G. Rosary West,  
Husnuheena Magu, Male' Republic of Maldives

Rev:	Page:
---	PL -03
---	
---	

- Legend
- Floor Drain
  - Floor Gully
  - 110Ø Soil Pipe (uPVC Pipe)
  - 110Ø Soil Vent Pipe (uPVC Pipe)
  - 82Ø Waste Pipe (uPVC Pipe)
  - 82Ø Waste Vent Pipe (uPVC Pipe)
  - 40Ø Waste Pipe (uPVC Pipe)
  - 63Ø Manhole Vent Pipe (uPVC Pipe)
  - 110Ø Rain Water Pipes (uPVC Pipe)
  - Bottle Trap
  - Manhole
  - Gully Trap

Notes: -

- All Drainage Pipes Should Have At A Slope Of 1/150
- All Floor Drains Should Have 'P' Traps



CONNECTED TO EXISTING MAIN SEWER NETWORK

GROUND FLOOR DRAINAGE LAYOUT

1:150

PROPOSED 03 STOREY  
**MULTIPURPOSE  
HALL AND FOUR  
CLASSROOM  
BLOCK,  
N. LANDHOO**  
Client:  
**Ministry Of Education**











June 2021

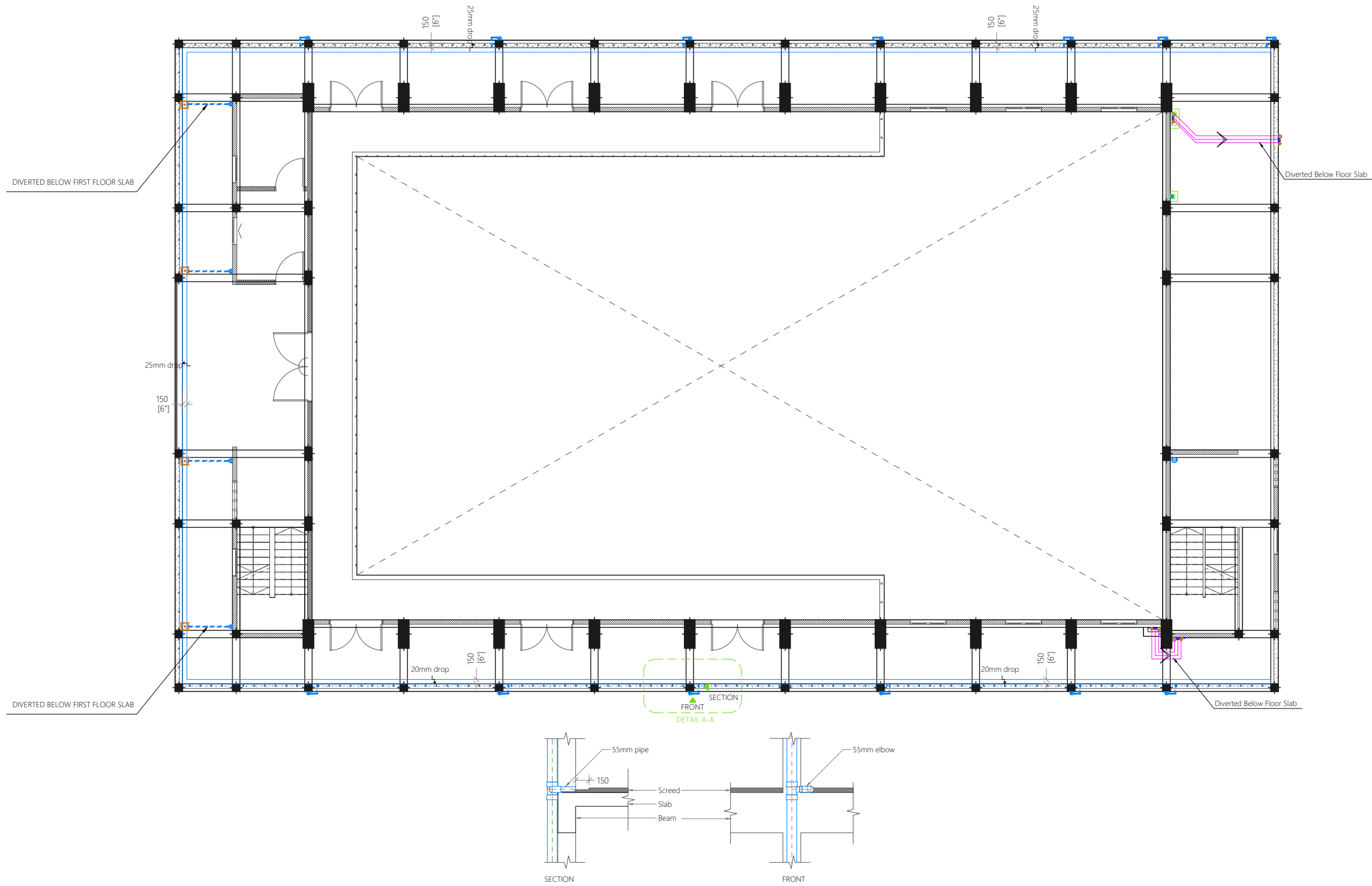
Services By: **Mohamed Rassam**  
Checked By:  
Drawn By: **Hussain Rasheed**

  
**EPOCH**  
T: +960 333 3528, E: info@epoch.associates  
W: www.epoch.associates, A: G. Rosary West,  
Husnuheena Magu, Male' Republic of Maldives

Rev:	Page:
---	DR -01
---	
---	

Legend

-  Floor Drain
-  Floor Gully
-  110Ø Soil Pipe (uPVC Pipe)
-  110Ø Soil Vent Pipe (uPVC Pipe)
-  82Ø Waste Pipe (uPVC Pipe)
-  82Ø Waste Vent Pipe (uPVC Pipe)
-  40Ø Waste Pipe (uPVC Pipe)
-  63Ø Manhole Vent Pipe (uPVC Pipe)
-  110Ø Rain Water Pipes (uPVC Pipe)
-  Bottle Trap



FIRST FLOOR DRAINAGE LAYOUT  
1:150

PROPOSED 03 STOREY  
**MULTIPURPOSE  
HALL AND FOUR  
CLASSROOM  
BLOCK,  
N. LANDHOO**  
Client:  
**Ministry Of Education**

June 2021  
Services By: **Mohamed Rassam**  
Checked By:  
Drawn By: **Hussain Rasheed**

  
**EPOCH**  
T: +960 333 3528, E: info@epoch.associates  
W: www.epoch.associates, A: G. Rosary West,  
Husnuheena Magu, Male' Republic of Maldives

Rev:	Page:
---	DR -02
---	
---	

Legend

- Floor Drain
- Floor Gully
- 110Ø Soil Pipe (uPVC Pipe)
- 110Ø Soil Vent Pipe (uPVC Pipe)
- 82Ø Waste Pipe (uPVC Pipe)
- 82Ø Waste Vent Pipe (uPVC Pipe)
- 40Ø Waste Pipe (uPVC Pipe)
- 63Ø Manhole Vent Pipe (uPVC Pipe)
- 110Ø Rain Water Pipes (uPVC Pipe)
- Bottle Trap



PROPOSED 03 STOREY  
**MULTIPURPOSE  
HALL AND FOUR  
CLASSROOM  
BLOCK,  
N. LANDHOO**  
Client:  
**Ministry Of Education**

June 2021  
Services By: **Mohamed Rassam**  
Checked By:  
Drawn By: **Hussain Rasheed**

  
**EPOCH**  
T: +960 333 3528, E: info@epoch.associates  
W: www.epoch.associates, A: G. Rosary West,  
Husnuheena Magu, Male' Republic of Maldives

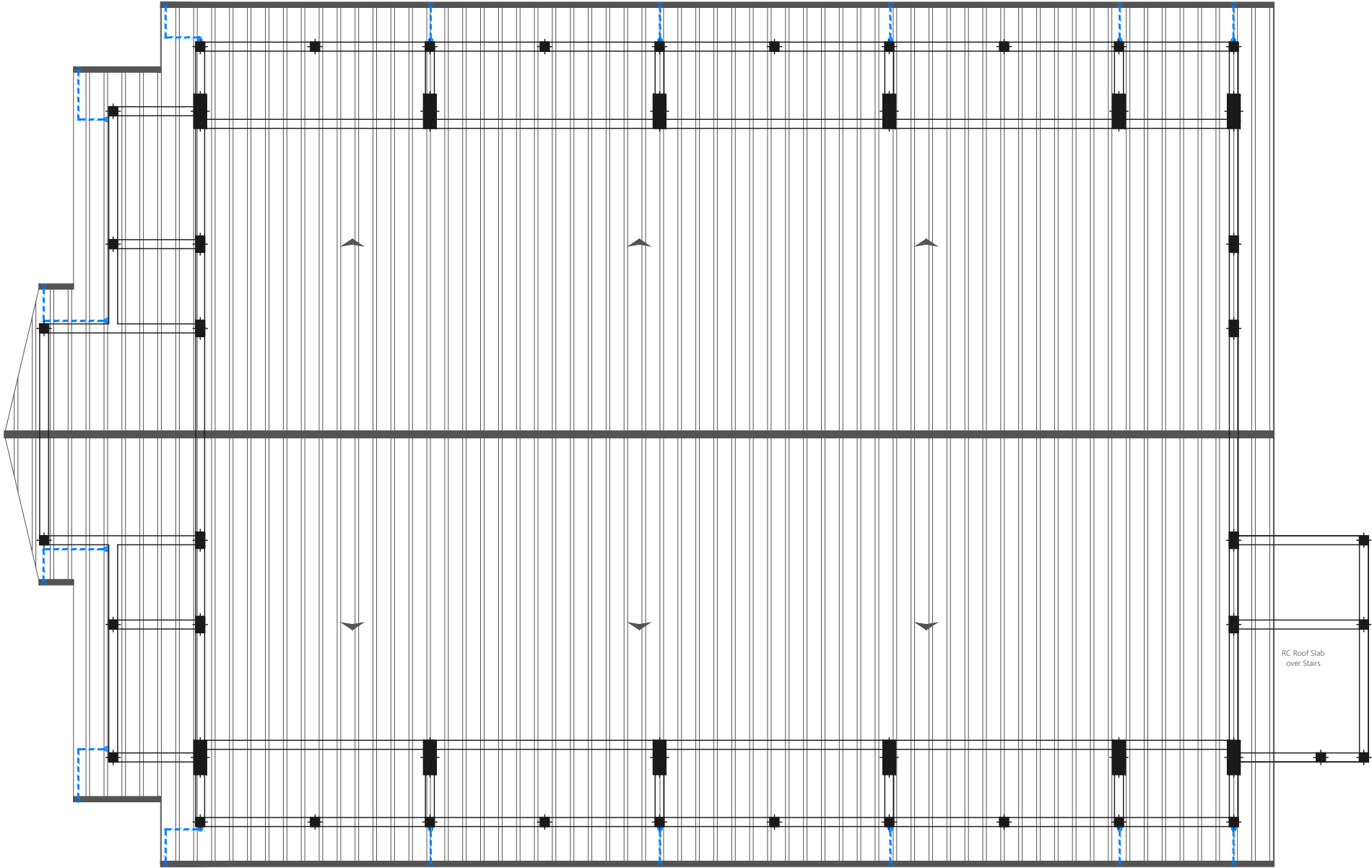
Rev:	Page:
---	DR -03
---	
---	

**SECOND FLOOR DRAINAGE LAYOUT**  
1:150



Legend

110Ø Rain Water Pipes (uPVC Pipe)



ROOF DRAINAGE LAYOUT  
1:150

PROPOSED 03 STOREY  
**MULTIPURPOSE  
HALL AND FOUR  
CLASSROOM  
BLOCK,  
N. LANDHOO**  
Client:  
**Ministry Of Education**

June 2021  
Services By: Mohamed Rassam  
Checked By:  
Drawn By: Hussain Rasheed

  
**EPOCH**  
T: +960 333 3528, E: info@epoch.associates  
W: www.epoch.associates, A: G. Rosary West,  
Husnuheena Magu, Male Republic of Maldives

Rev:	Page:
---	DR -04
---	
---	