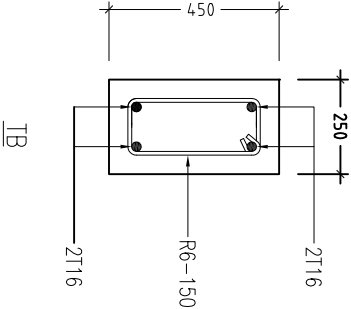


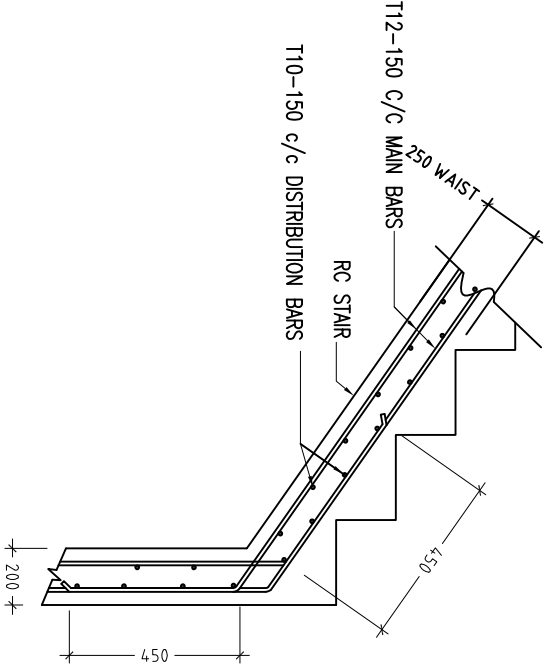
				REINFORCEMENT
FOOTING	LENGTH/mm	WIDTH/mm	DEPTH/mm	
F1	1900	1900	450	T12@150mm C/C BW BOTTOM
F2	2750	2750	450	T16@150mm C/C BW BOTTOM
F3	2600	4800	450	T16@150mm C/C BW TOP & BOTTOM
F4	2300	2300	450	T16@150mm C/C BW BOTTOM
F5	2450	2450	450	T16@150mm C/C BW BOTTOM
F6	2200	2200	450	T12@125mm C/C BW BOTTOM
F7	2000	4300	450	T12@150mm C/C BW TOP & BOTTOM
F8	AS GIVEN			T12@150mm C/C BW TOP & BOTTOM
F9	1400	1400	450	T12@150mm C/C BW BOTTOM
F10	AS GIVEN			T12@150mm C/C BW TOP & BOTTOM
F11	AS GIVEN			T12@150mm C/C BW TOP & BOTTOM

FOOTING DETAILS



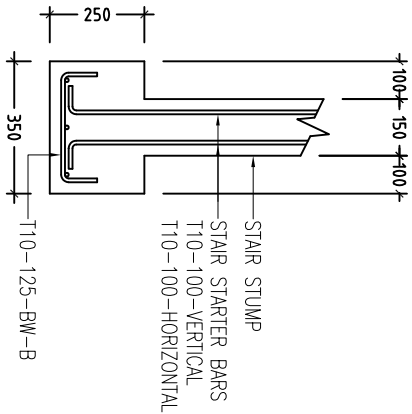
FOUNDATION BEAM DETAILS

SCALE 1:20



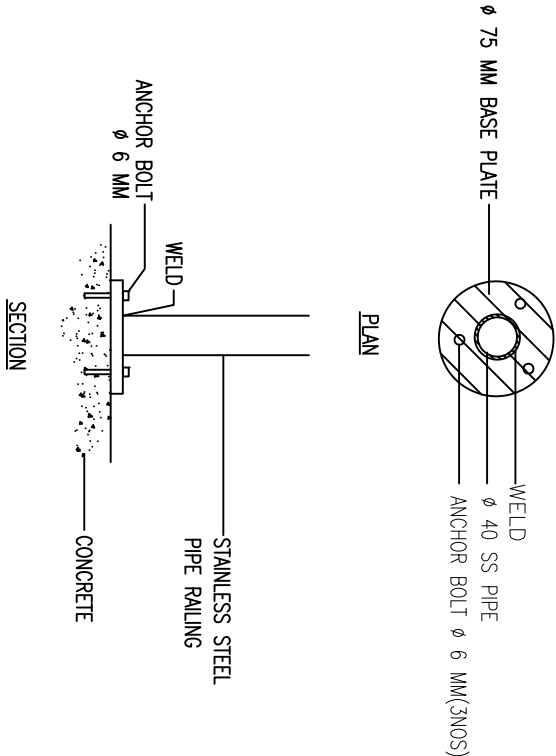
TYPICAL STAIR RFT DETAIL

SCALE 1:20



DETAIL C (STAIRCASE FOOTING)

SCALE 1:20



DETAIL D (STAIR RAILING)

SCALE 1:20