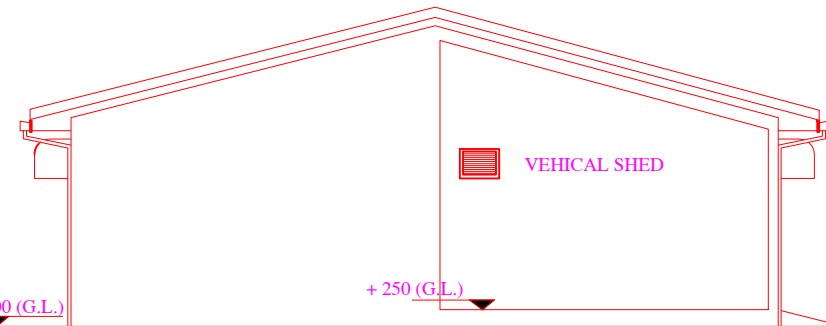
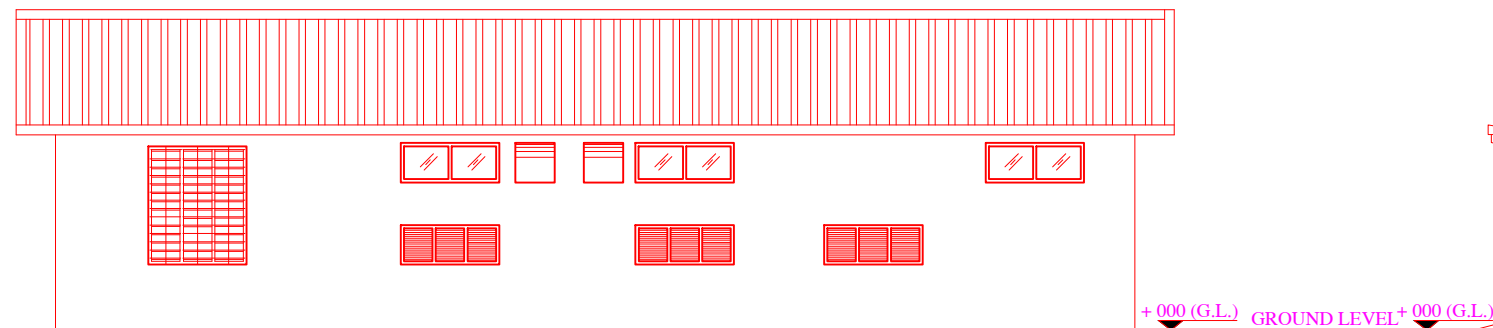


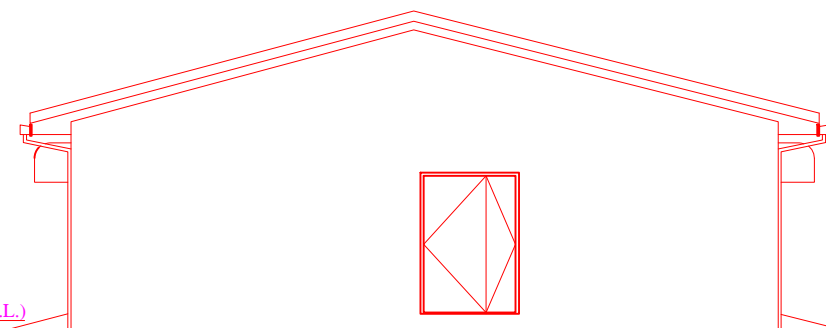
**ELEVATION A-A**  
SCALE 1:100



**ELEVATION -C**  
SCALE 1:100



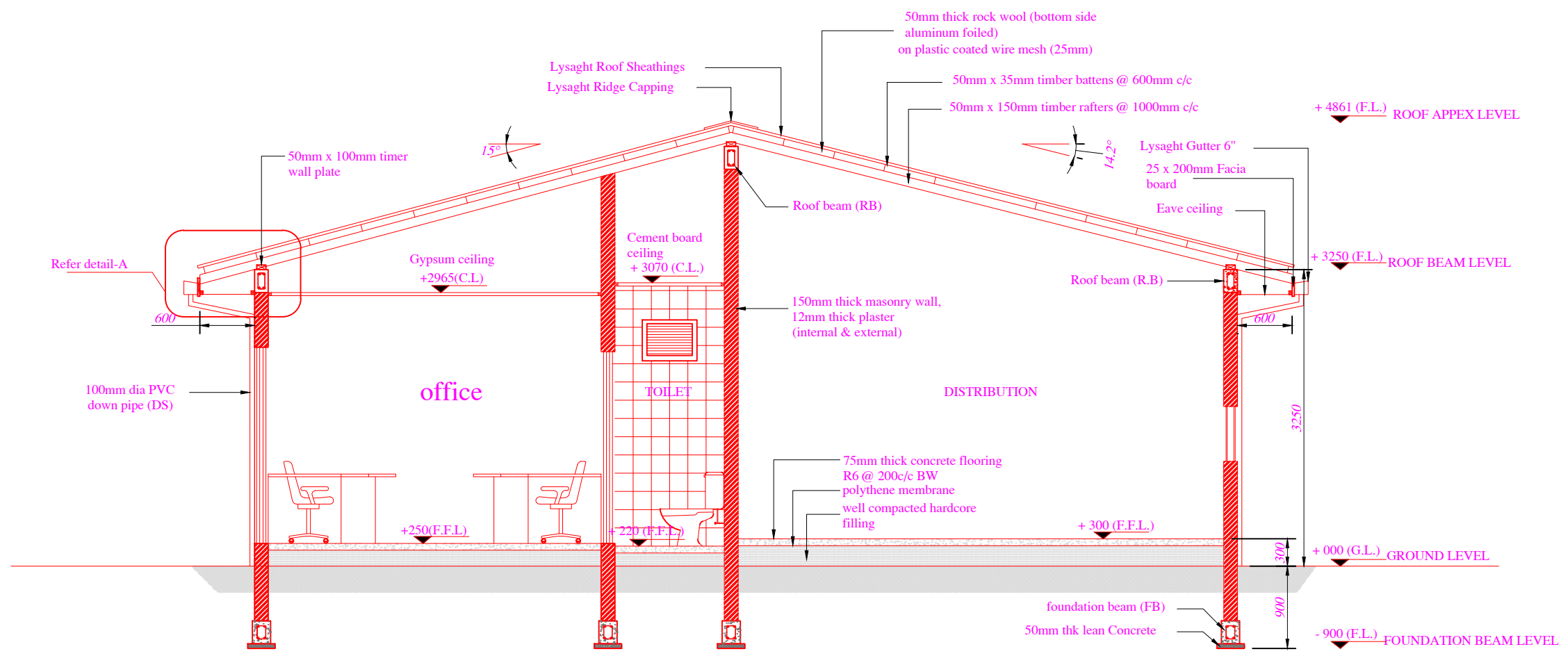
**ELEVATION B**  
SCALE 1:100



**ELEVATION -D**  
SCALE 1:100

NOTES:  
1. ALL DIMENSIONS ARE IN MM UNLESS AND OTHERWISE SPECIFIED.

		CLIENT		MINISTRY OF ENVIRONMENT AND ENERGY MALE REPUBLIC OF MALDIVES	
		PROJECT		CONSULTANCY SERVICES FOR DESIGN AND SUPERVISION OF WATER SUPPLY FACILITIES IN THE ISLANDS R. MADUNYAREE, B. DHARAVANDHOQ, S. FOAKADHOQ, H. NOLHIVARANFARU MALDIVES	
		TITLE		TYPICAL DRAWING OF RO AND ADMINISTRATION BUILDING - ELEVATION	
		DESIGNED BY		SHAH TECHNICAL CONSULTANTS PVT. LTD., INDIA In Association With	
		DRAWN BY		DEVELOPMENT TECHNOLOGIES MALDIVES, MALDIVES	
		APPROVED	CHECKED	DESIGNED	DRAWN
		SSS	SSS	SPP	PDP
		SCALE	DATE	DRAWING No.	REVISION
		1:100	NOV 2017	TYP/ADMIN-BUILD/WS/03	0
REVISION		REFERENCE DRAWINGS		AS-LANDSCAPE	



**SECTION Y-Y**  
SCALE 1:50

NOTES:  
1. ALL DIMENSIONS ARE IN MM UNLESS AND OTHERWISE SPECIFIED.

No.		DATE	DESCRIPTION	DRAWING No.	DESCRIPTION
REVISION				REFERENCE DRAWINGS	
APPROVED		CHECKED	DESIGNED	DRAWN	REVISION
SSS		SSS	SPP	PDP	0
SCALE		DATE	DRAWING No.		
1:100		NOV 2017	TYP/ADMIN-BUILD/WS/02		

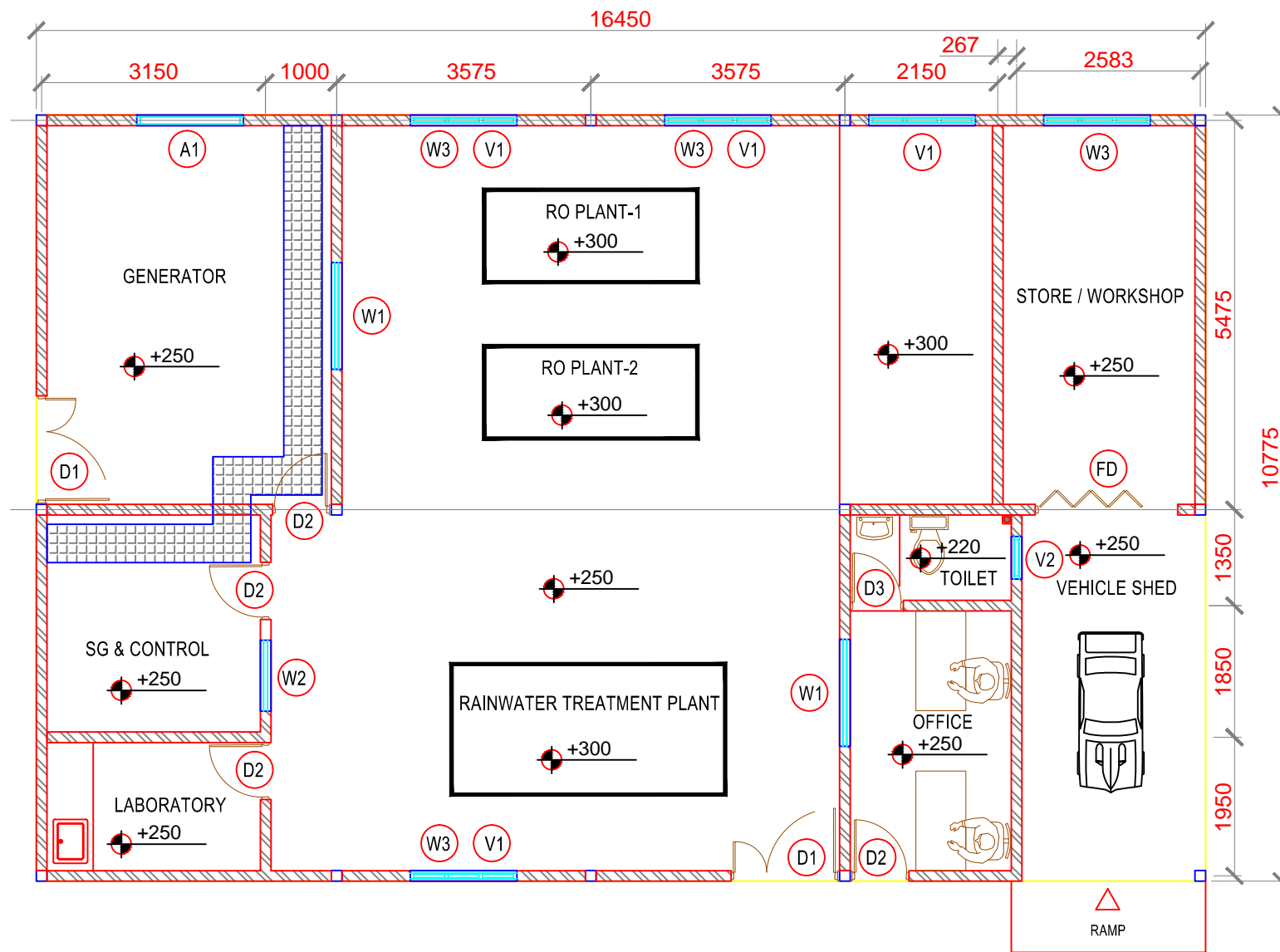
CLIENT: MINISTRY OF ENVIRONMENT AND ENERGY  
MALE REPUBLIC OF MALDIVES

PROJECT: CONSULTANCY SERVICES FOR DESIGN AND SUPERVISION OF WATER SUPPLY FACILITIES IN THE ISLANDS R. MADUVYAREE, B. DHARAVANDHOQ, S. FOAKADHOQ, H. NOLHIVARANFARU MALDIVES

TITLE: TYPICAL DRAWING OF RO AND ADMINISTRATION BUILDING - SECTION

DESIGNED BY: SHAH TECHNICAL CONSULTANTS PVT. LTD., INDIA  
In Association With  
DEVELOPMENT TECHNOLOGIES MALDIVES, MALDIVES

SCALE: 1:100  
DATE: NOV 2017  
DRAWING No.: TYP/ADMIN-BUILD/WS/02  
REVISION: 0



**LEGEND**

150mm thick solid cement block masonry wall



450mm Wide Cable Trench

Underground 100mmØ PVC pipe x 2  
(for service line)

Underground 100mmØ PVC pipe x 1  
(for service line)

**GROUND FLOOR PLAN**  
SCALE 1:100

NOTES:  
1. ALL DIMENSIONS ARE IN MM UNLESS AND OTHERWISE SPECIFIED.

		<b>CLIENT</b> MINISTRY OF ENVIRONMENT AND ENERGY MALDIVES REPUBLIC OF MALDIVES	
		<b>PROJECT</b> CONSULTANCY SERVICES FOR DESIGN AND SUPERVISION OF WATER SUPPLY FACILITIES IN THE ISLANDS R. MADUVVAREE, B. DHARAVANDHO, S. FOAKADHO, H.B. NOLHIVARANFARU MALDIVES	
		<b>TITLE</b> TYPICAL DRAWING OF RO AND ADMINISTRATION BUILDING - FLOOR PLAN	
		<b>DESIGNER</b> SHAH TECHNICAL CONSULTANTS PVT. LTD., INDIA In Association With	
		<b>CLIENT</b> DEVELOPMENT TECHNOLOGIES MALDIVES, MALDIVES	
<b>APPROVED</b>	<b>CHECKED</b>	<b>DESIGNED</b>	<b>DRAWN</b>
SSS	SSS	SPP	PDP
<b>SCALE</b>	<b>DATE</b>	<b>DWING No.</b>	<b>REVISION</b>
1:100	NOV 2017	TYP/ADMIN-BUILD/WS/01	0
<b>REVISION</b>		<b>REFERENCE DRAWINGS</b>	