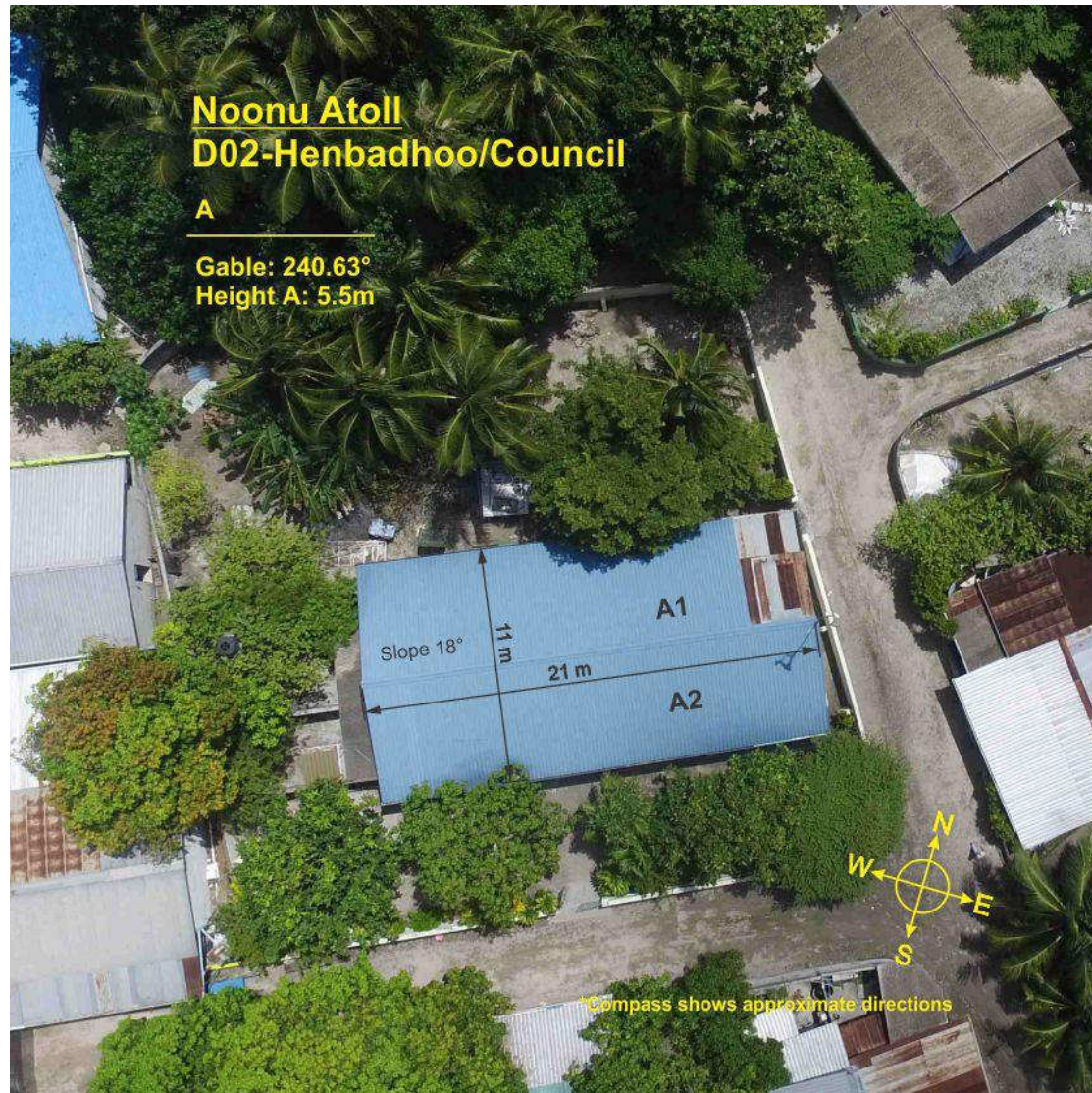


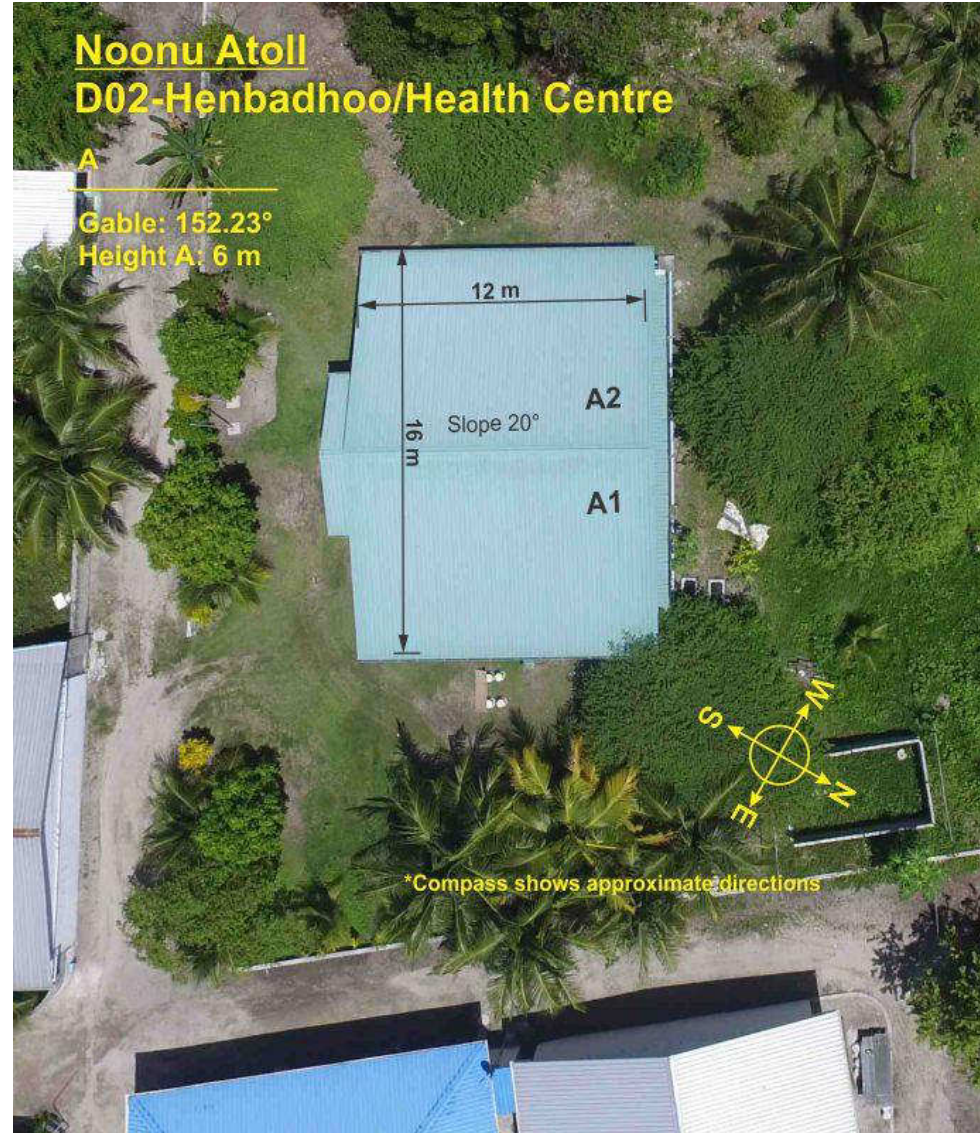
# Noonu Atoll

## D02\_Henbadhoo

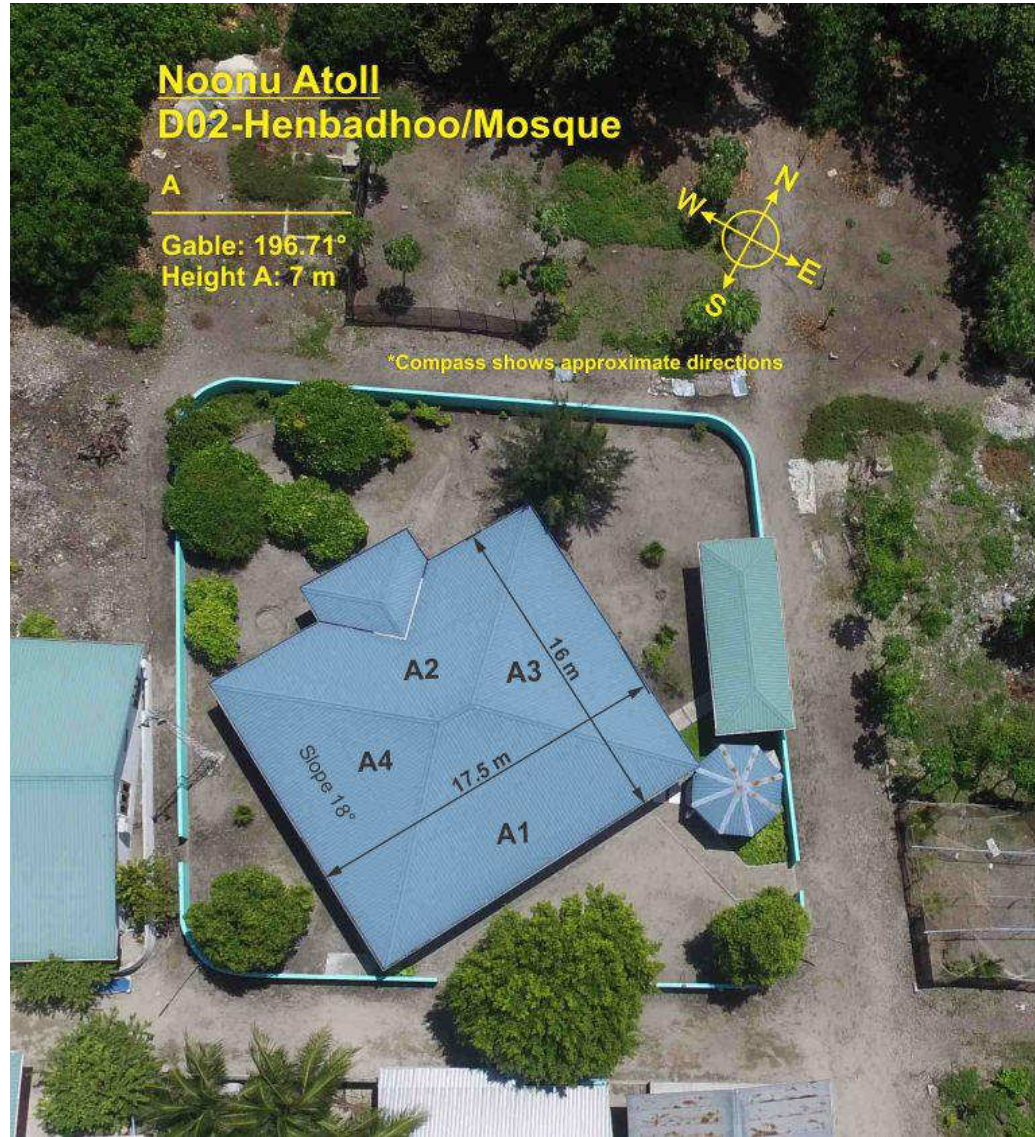
### Council



## Health Centre



## Mosque



## School



## D03\_Kendnikulhudhoo

### Council



## School



# D05\_Maalhendhoo

## School and Healthcentre





# D06\_Kudafari

## School



# D07\_Landhoo

## Council



## Powerhouse



## School



# D08\_Maafaru

## Council



## Youth Centre and Health Post



## Powerhouse



## School





# D09\_Lhohi

## Council



## Health Centre



## School

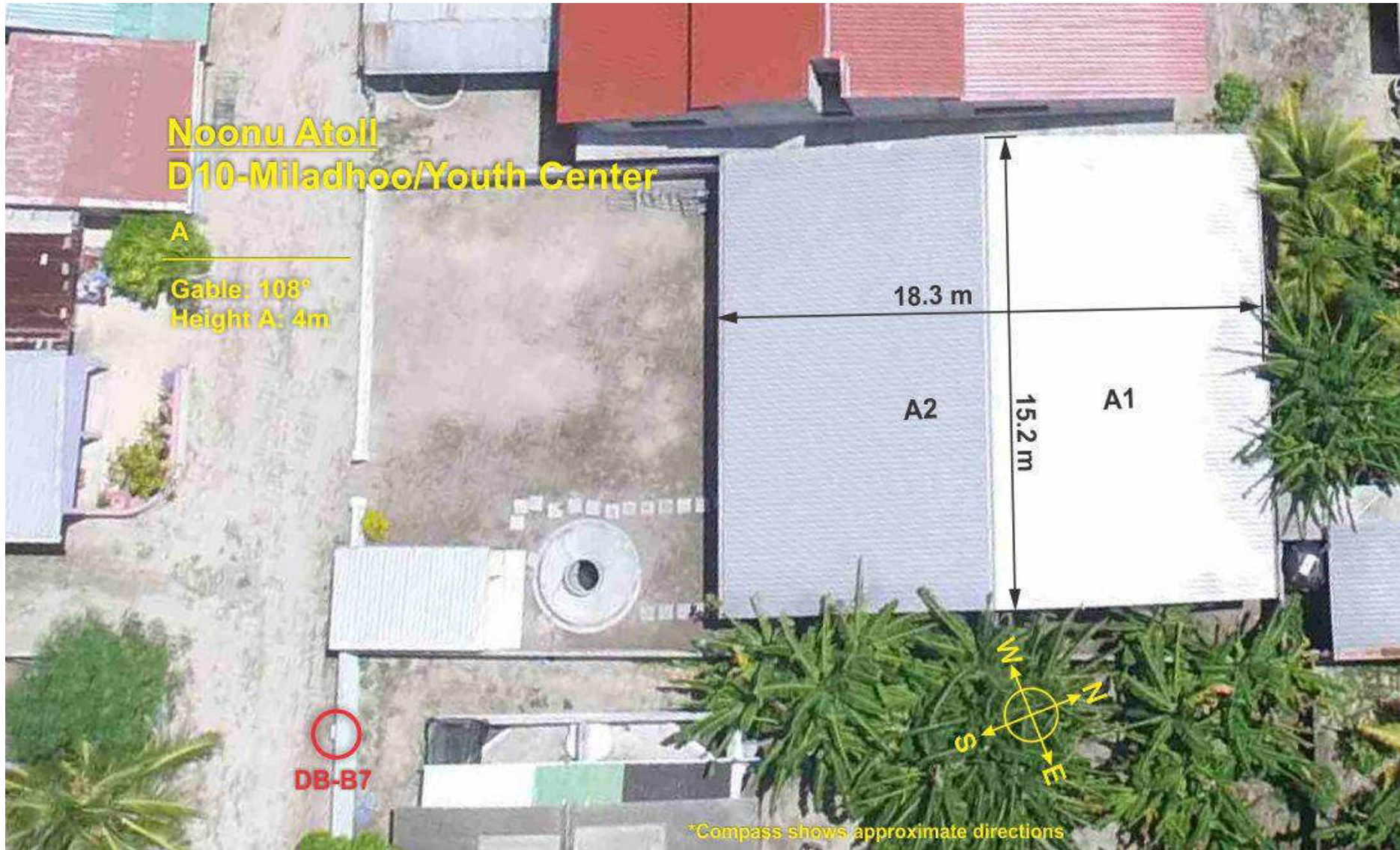


# D10\_Miladhoo

## Mosque Furqan



## Youth Centre



## School



# D11\_Magoodhoo

## Council and School



## Health Centre



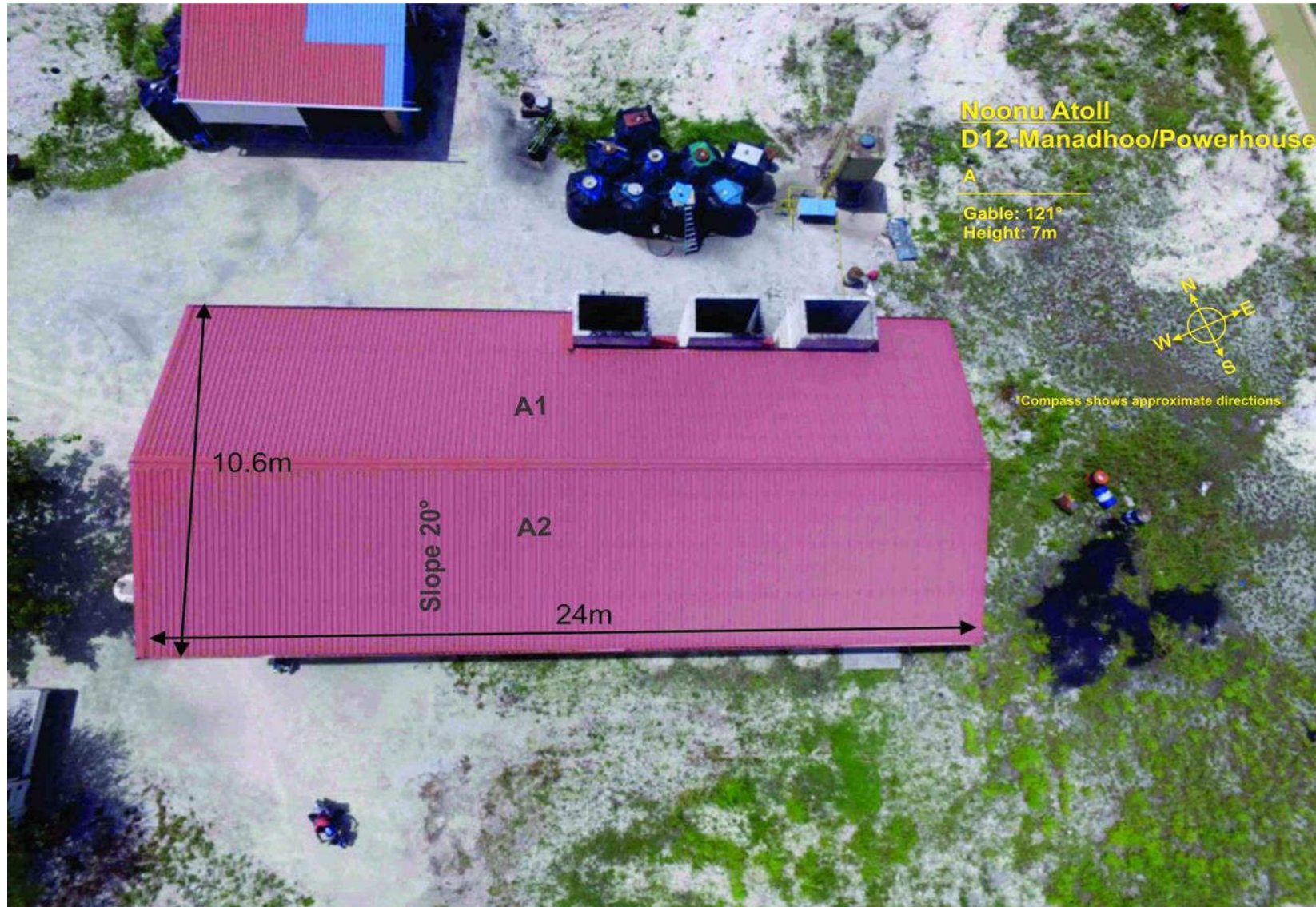


## D12\_Manadhoo

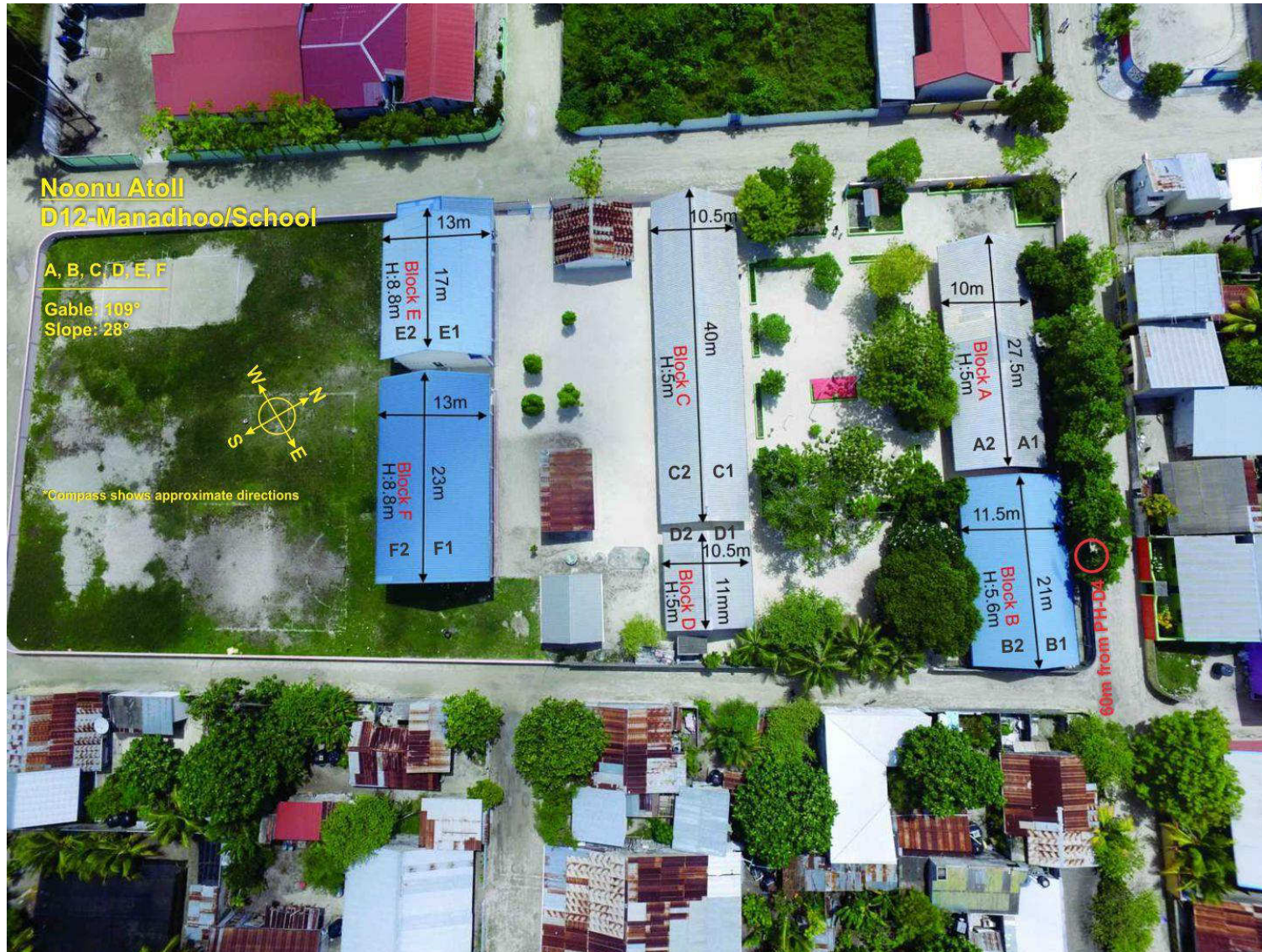
### Atoll Council



## Powerhouse



## School



## Sewerage Plant



# Free Field



**PV Power Plant**

Total Power DC (STC)	72.8 kW
Module Power (STC)	250 Wp
Number of Modules	290
Modules per String	23
Strings per Table	1
Number of Tables	14
Row distance	1.0 m

SCALE 1 : 200

0m 10m 20m

*"Copies of this document and photos taken from it may be used for information purposes only. They do not constitute an offer or a contract. The user assumes full responsibility for the use of the information. All rights are reserved by the owner of the copyright. A patent or the registration of a utility model or design."*

0	21.07.2016	First Issue	SD/DESIGNER	REVISOR	APPROVER
REV	DATE	ISSUE, SCOPE OF REVISION	PREPARED	CHECKED	APPROVED

CLIENT:

Ministry of Environment and Energy, Maldives

PROJECT:

Preparing Outer Islands for Sustainable Energy Development (POISED)

ENGINEERING CONTRACTOR:

ILF Consulting Engineers  
Werner-Eckert-Straße 7, D-81829 Munich, Germany

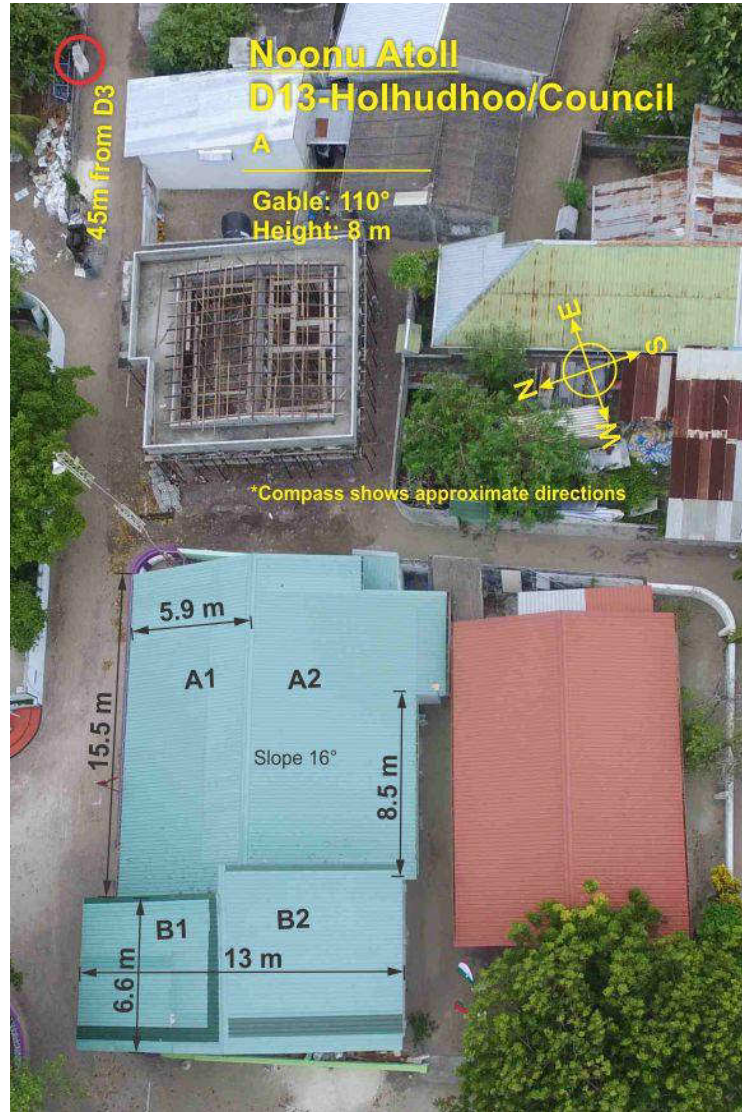
DRAWING TITLE:

Free Field Layout  
D12 Manadhoo, 72.8 kW

SCALE:	PROJECT:	DRAWING NO.:	SHEET:	OF:
1:200	J431	J431-ILFM-AD-0016	1	1

# D13\_Holhudhoo

## Council



## Health Centre



## Masjidul Ihulas

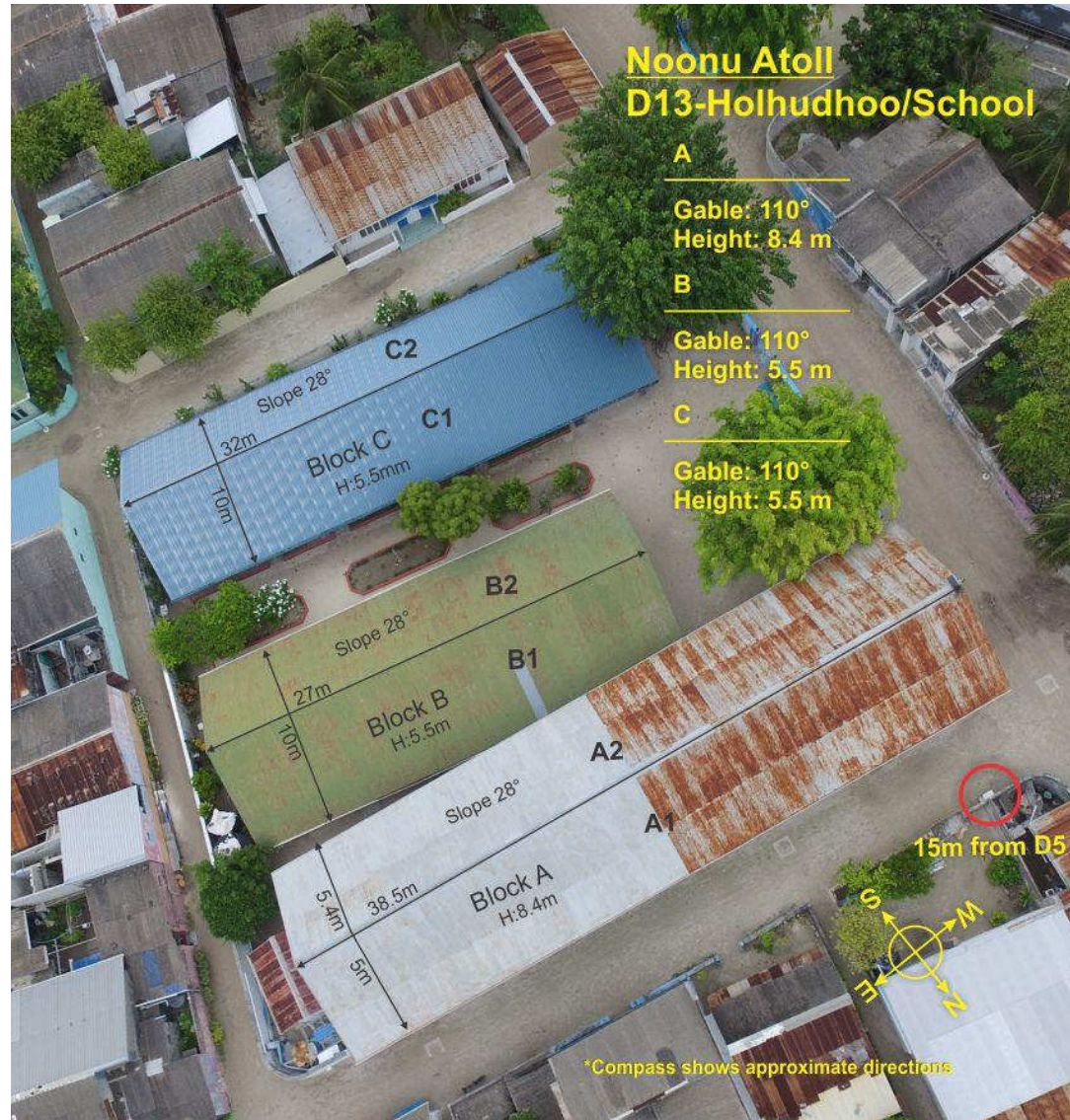




## Powerhouse



## School Block A, B, C



## School Block D and Pre-School



## Free Field



# D14\_Fodhdhoo

## School



Free Field



**PV Power Plant**

Total Power DC (STC)	67.2 MW
Module Power (STC)	260 Wp
Number of Modules	229
Modules per String	23
Strings per Table	1
Number of Tables	11
Row distance	1.0 m

SCALE 1 : 200

0m 10m 20m

**DISCLAIMER:**  
 "Copying of this document and/or photos is to volume and for use or reproduction of the contents without the written consent of the copyright holder. All rights are reserved to the extent of the copyright and the reproduction of a utility model or design."

REV	DATE	ISSUE, SCOPE OF REVISION	PREPARED	CHECKED	APPROVED
0	21.07.2018	First Issue	Seemaween	Ream	Flugover

CLIENT:  
**Ministry of Environment and Energy, Maldives**

PROJECT:  
**Preparing Outer Islands for Sustainable Energy Development (POISED)**

ENGINEERING CONTRACTOR:  
**ILF Consulting Engineers**  
 Werner-Eckert-Straße 7, D-81829 Munich, Germany

DRAWING TITLE:  
**Free Field Layout**  
**D14 Fodhdhoo, 57.2 kW**

SCALE	PROJECT	DRAWING NO.	SHEET	OF
1:200	J431	J431-ILFM-AD-0018	1	1

# D15\_Velidhoo

## Council



## Health Centre





## Powerhouse



## School



## Youth Centre

