

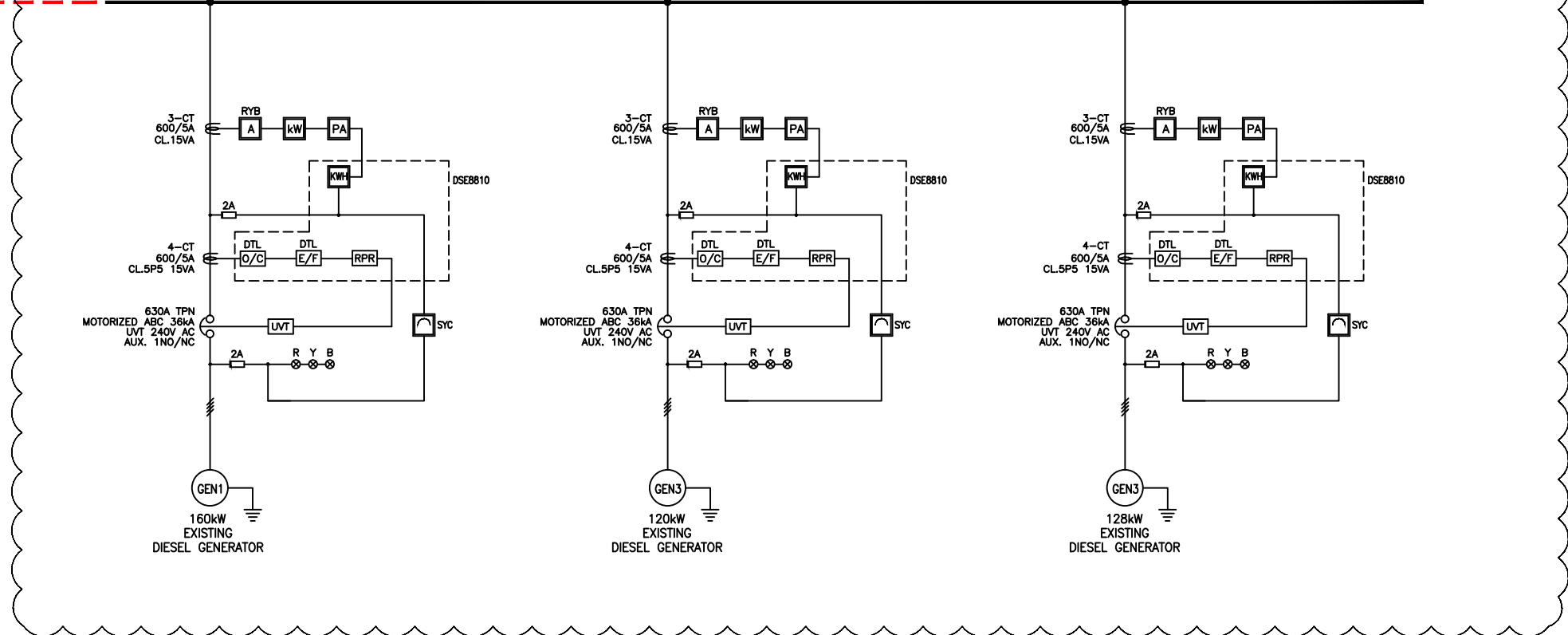
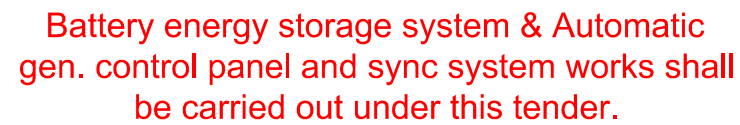
The diagram illustrates a 1600A busbar system with eight feeders. Each feeder is connected to a common TINNED COPPER BUSBAR (1600A) at the bottom. The feeders are labeled as follows:

- FEEDER-1 POWERHOUSE
- FEEDER-2 A
- FEEDER-3 B
- FEEDER-4 C
- FEEDER-5 D
- FEEDER-6 E
- FEEDER-7 F
- FEEDER-8 SPARE

Each feeder circuit includes the following components (from top to bottom):

- 4 WAY T.B. (Terminal Block)
- 2A (Fuse)
- 3-CT 200/5A CL.3 (Current Transformer)
- PM (Potential Transformer)
- ZCT (Zero Current Transformer)
- 160A, TPN MCCB 25kA (Magnetic Circuit Breaker)
- ELR 0-10A 0-0.35SEC (Electronic Load Relay)
- SHT (Switching Transformer)

The busbar is labeled TINNED COPPER BUSBAR (1600A). A spare terminal block (2A R Y B) is shown at the bottom right.



1. THESE DRAWINGS ARE PRELIMINARY AND ARE FOR TENDERING PURPOSES ONLY.
2. CONTRACTOR SHALL CARRY OUT DETAILED SITE SURVEY AND ENGINEERING / STUDY TO EVALUATE AND PROPOSE THE EXTENT OF REPLACEMENT / MODIFICATION REQUIRED IN THE EXISTING DISTRIBUTION NETWORK. THIS IS SUBJECT TO REVIEW AND APPROVAL BY THE EMPLOYER DURING THE ENGINEERING PHASE OF THE PROJECT.

	PURPOSE OF SUBMISSION	REV	AUTHORISED BY	DATE	DRAWING TITLE		DESIGN : ESM	SCALE : N.T.S
	FIRST REVISION	A	SWK	08/08/16	CONCEPTUAL SCHEMATIC DIAGRAM FOR LV DISTRIBUTION BOARD OF POWER HOUSE (C04-FEYDH00)		DRAWN : DAI/MBA	DRW NO. : J431-GOPA-069-CR-E-S-0001-Rev.B
		A	A.M	20/12/16	PROJECT	CLIENT:	LICENCE NO:	ISLAND NAME : GOIDH00
					PREPARING OUTER ISLANDS SUSTAINABLE DEVELOPMENT	GOVERNMENT OF THE REPUBLIC OF MALDIVES	DATE: : 08AUG16	PAGE : 1/1