

Proposed Multipurpose Hall Building at Th.Omadhoo School

SERVICES DRAWINGS
Client: Ministry of Education

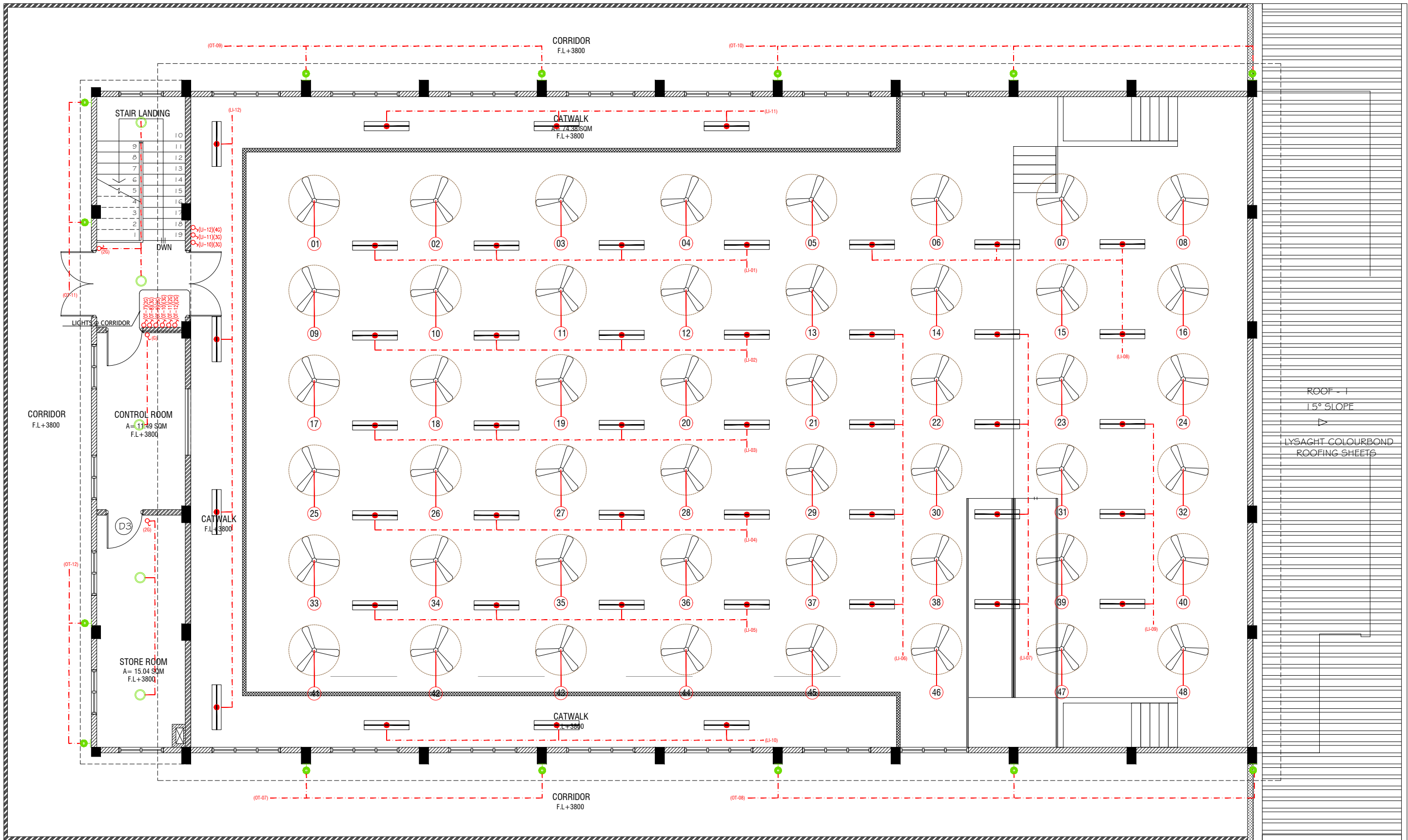


RIYAN PRIVATE LIMITED

t : +9603315049 f : +9603310776
e : info@riyan.com.mv
w : www.riyan.com.mv
3rd floor, H. Azum, Armeeneemagu, Male'

TABLE OF CONTENTS

DRAWING No.	TITLE	REVISION No.	DATE	REMARKS
S E R V I C E S		---	---	---
EL - 01 / 02	GROUND FLOOR LIGHTING LAYOUT	---	---	---
EL - 02 / 02	1ST FLOOR LIGHTING LAYOUT	---	---	---
EP - 01 / 02	GROUND FLOOR POWER LAYOUT	---	---	---
EP - 02 / 02	1ST FLOOR POWER LAYOUT	---	---	---
DR - 01 /04	GROUND FLOOR PLUMBING & DRAINAGE LAYOUT	---	---	---
DR - 02 /04	1ST FLOOR DRAINAGE LAYOUT	---	---	---
DR - 03 /04	ROOF PLAN -1 DRAINAGE LAYOUT	---	---	---
DR - 04 /04	ROOF PLAN -2 DRAINAGE LAYOUT	---	---	---
FDP - 01 / 02	GROUND FLOOR FDP LAYOUT	---	---	---
FDP - 02 / 02	1ST FLOOR FDP LAYOUT	---	---	---



FIRST FLOOR LIGHTING LAYOUT

SCALE 1:100



LEGEND

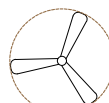


4 x 55W PLL Lamps
(Wire guard, Polycarbonate diffuser, Emergency and dimming versions)

C2



LED CEILING DOWN LIGHT (18W)



CEILING FAN (52" - 54")

WPD



40W (IP 65) OUT DOOR WALL LIGHT

ML



MIRROR LIGHT (7W LED LIGHT)



LIGHT SWITCH



CEILING FAN SWITCH (4G)



CIRCUIT LINE



SWITCHING LINE

NOTE:

- ALL WIRING TO BE OF STELCO APPROVED STANDARDS
- SWITCH CONTROL = 1200MM FROM FLOOR FIN. LEVEL
- ALL LIGHTING POINTS CONNECTED TO THEIR RESPECTIVE DB
- POLYCARBONATE ENCLOSURE TO ALL SWITCH AND SOCKET WHICH ARE LOCATED AT THE OUTDOORS

NOTE:

- THE DOWNROD OF THE FANS IN THE HALL SHOULD BE NOT LESS THAN 60"

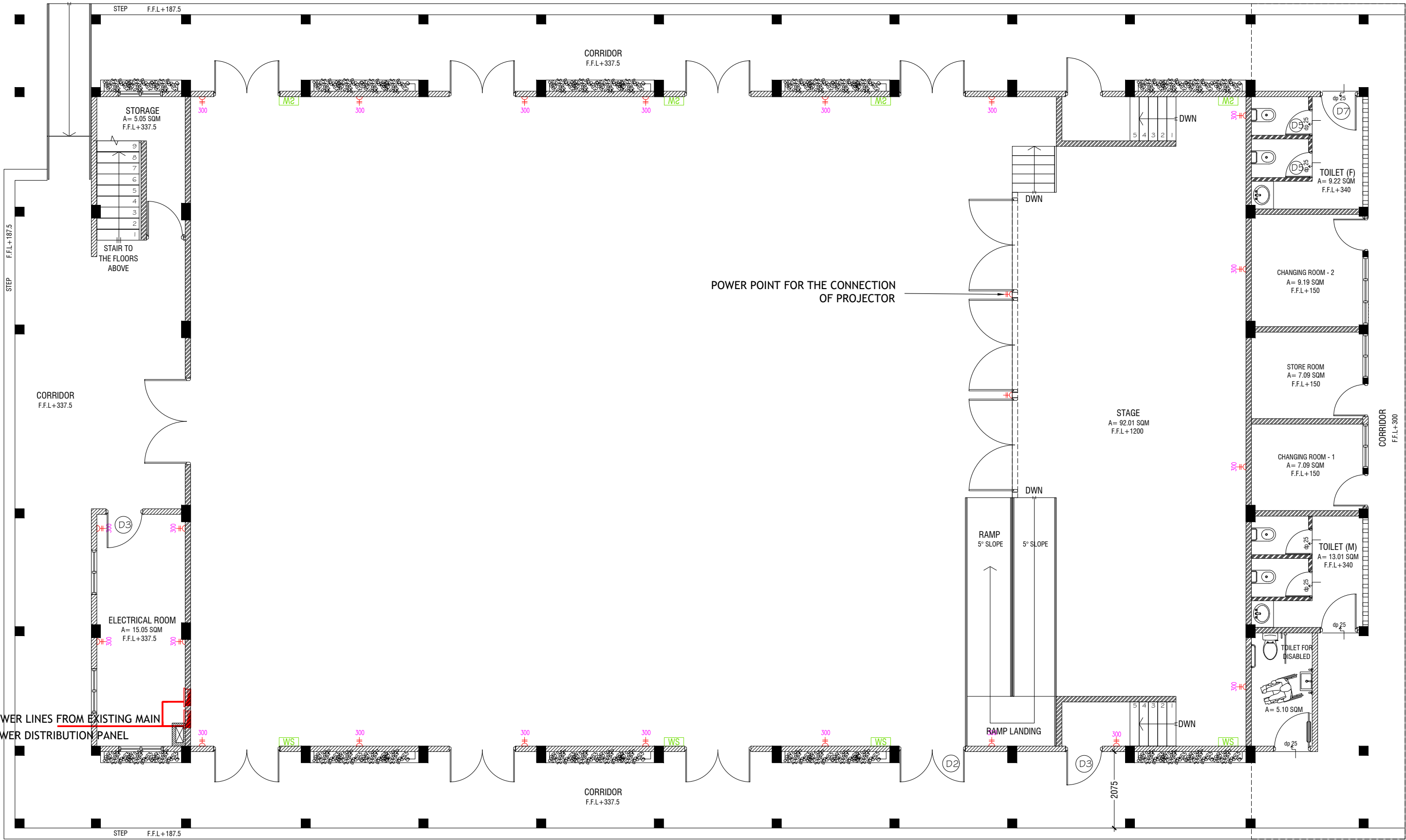
Th.Omadhoo School Hall
Client: Ministry of Education

Project Number: R/2020/006
Date: March 2021
Architect: Maniyam Indira Shanley
Engineer: Maniyam Leeyan Jaleel
Drawn by: Maniyam Leeyan Jaleel
Services: Alubatt Ahmed
Interior: -

1: +9603315049 F: +9603310776
E: info@riyan.com.mv
W: www.riyan.com.mv
3rd Floor, H. Aarun, Amaraa, Maldives

Title: 1st Floor
Lighting Layout
Page: EL - 02/02

The contents of these drawings remain as a property of Riyan Private Limited. Any use other than those expressly stated is a violation of this copyright.



GROUND FLOOR POWER LAYOUT

SCALE 1:100



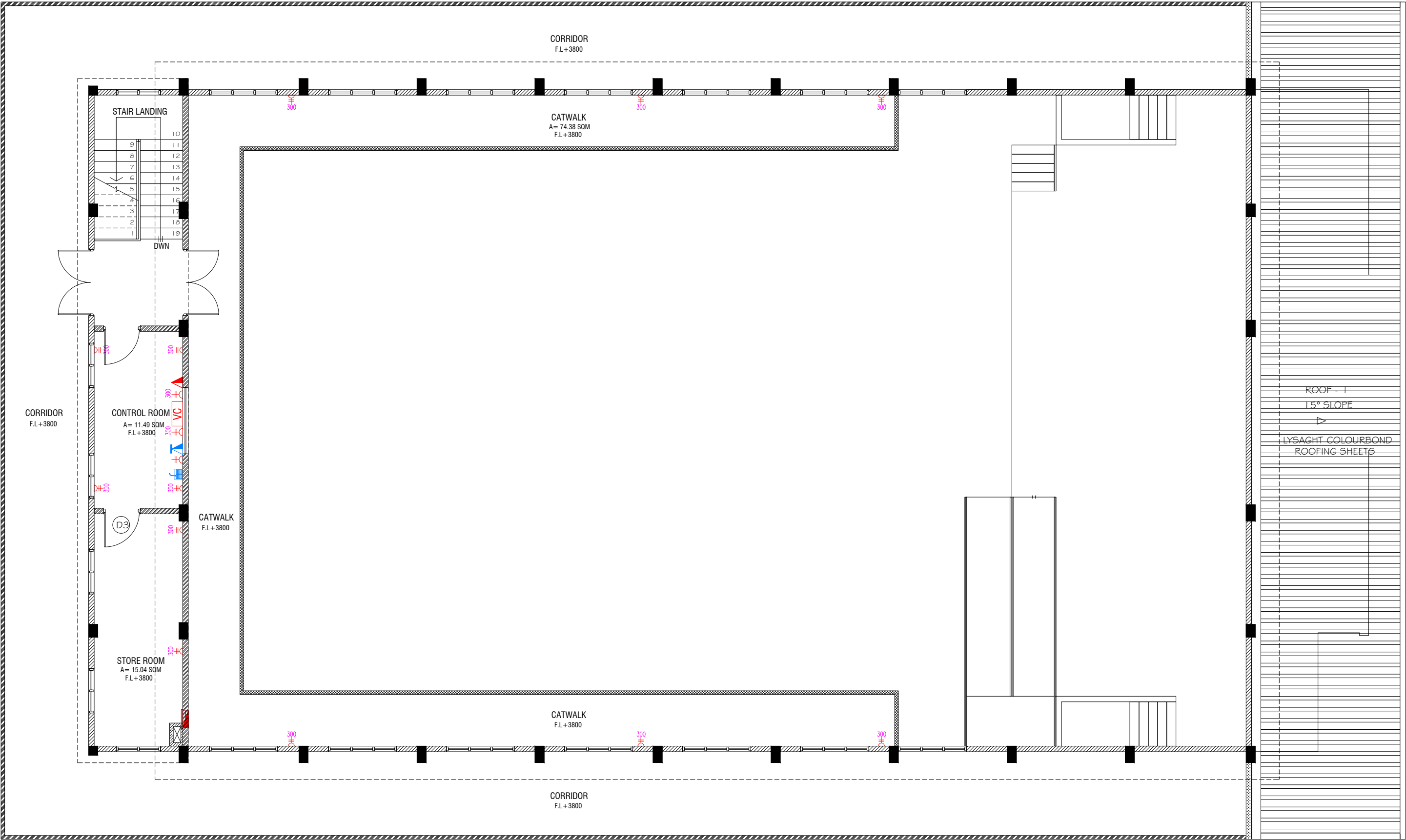
- PHONE EXTENSION
- COMPUTER NETWORK OUTLET (RJ 45 CONNECTORS)
- TELEPHONE OUTLET (RJ11, CONNECTOR)
- 13A POWER POINT
- 13A TWIN SOCKET OUTLET
- 15A.SWITCHED/ SPUR UNIT @ H.L.
- DISTRIBUTION BOX
- WALL SPEAKERS AT CEILING LEVEL

- NOTE:
- ALL WIRING TO BE OF APPROVED STANDARDS
 - POWER/IT/COMPUTER SOCKETS = 300MM - 450MM FROM FLOOR FIN. LEVEL
 - SWITCH CONTROL / SOCKET = 1100MM - 1200MM FROM FLOOR FIN. LEVEL
 - KITCHEN SOCKETS / PANTRY SOCKETS = 1150MM - 1250MM FROM FLOOR FIN. LEVEL
 - AC = 2500MM - 2700MM FROM FLOOR FIN. LEVEL

ALL ELECTRICAL COMPONENT TO BE CONNECTED TO THEIR RESPECTIVE DB

SPEAKERS TO BE CONNECTED TO THE MAIN PA SYSTEM OF THE SCHOOL

TO CHECK IF THE EXISTING MAIN PANEL BOARD CAN CATER THE PROPOSED BUILDING, IF NOT, TO SUPPLY AND INSTALL PANEL BOARD WITH kWh METER. WIRING AND CONNECTION TO MAIN PANEL BOARD FROM MAIN ELECTRICAL NETWORK TO BE DECIDED ON SITE



FIRST FLOOR POWER LAYOUT

SCALE 1:100



- PUBLIC ADDRESS SYSTEM
- PHONE EXTENSION
- COMPUTER NETWORK OUTLET (RJ 45 CONNECTORS)
- TELEPHONE OUTLET (RJ11, CONNECTOR)
- 13A POWER POINT
- 13A TWIN SOCKET OUTLET
- 15A.SWITCHED/ SPUR UNIT @ H.L.
- DISTRIBUTION BOX
- WALL SPEAKERS AT CEILING LEVEL
- VOLUME CONTROLLER

NOTE:

- ALL WIRING TO BE OF APPROVED STANDARDS
- POWER/IT/COMPUTER SOCKETS = 300MM - 450MM FROM FLOOR FIN. LEVEL
- SWITCH CONTROL / SOCKET = 1100MM - 1200MM FROM FLOOR FIN. LEVEL
- KITCHEN SOCKETS / PANTRY SOCKETS = 1150MM - 1250MM FROM FLOOR FIN. LEVEL
- AC = 2500MM - 2700MM FROM FLOOR FIN. LEVEL

ALL ELECTRICAL COMPONENT TO BE CONNECTED TO THEIR RESPECTIVE DB

SPEAKERS TO BE CONNECTED TO THE MAIN PA SYSTEM OF THE SCHOOL

Th.Omadhoo School Hall
Client: Ministry of Education

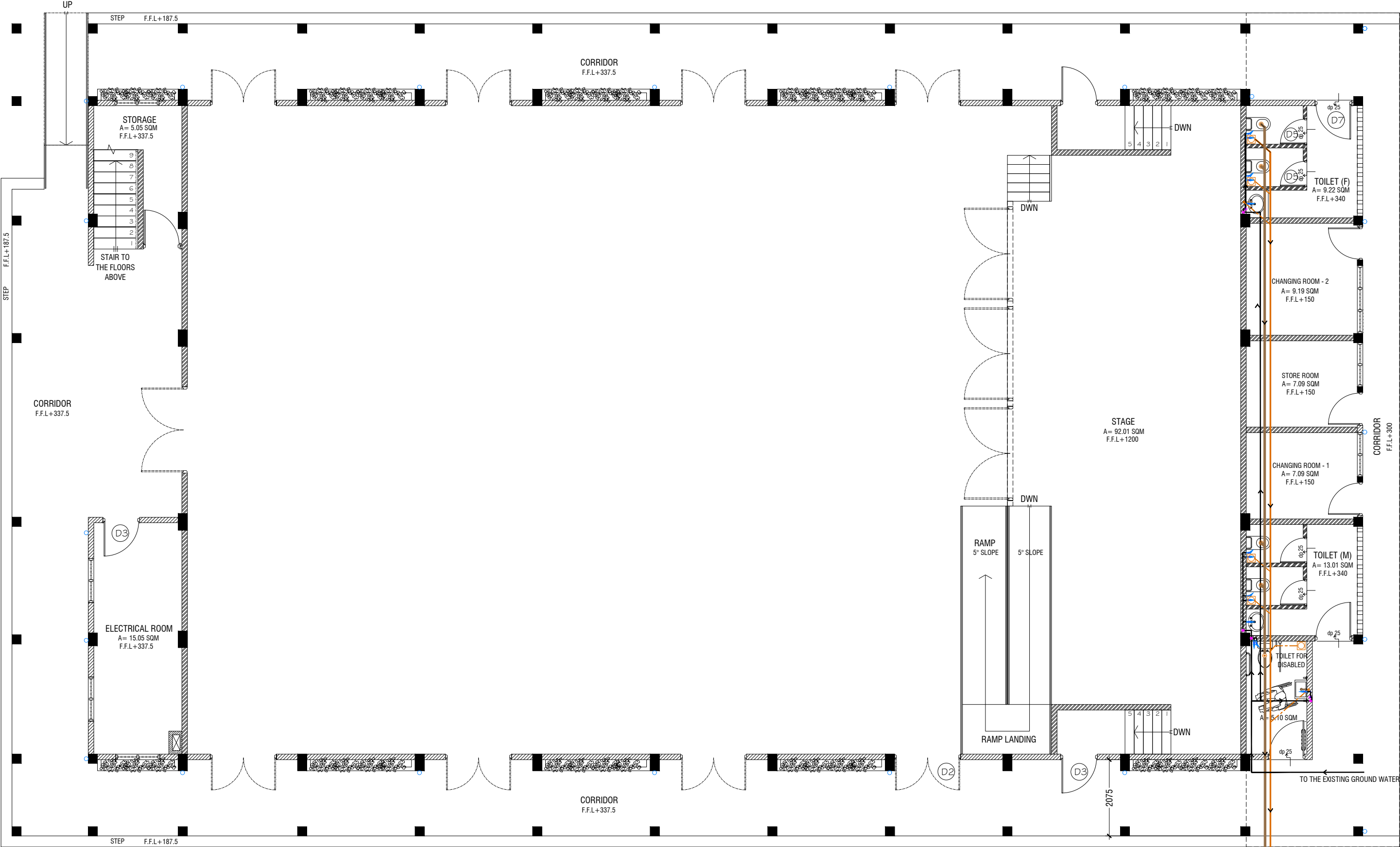
Project Number: R/02/02/006
Date: March 2021
Architect: Maniyam Taha Sharief
Engineer: Maniyam Taha Sharief
Drawn by: Maniyam Leeyan Jaleel
Services: Alubath Ahmed
Interior: -



RYAN PRIVATE LIMITED
T: +965315040 F: +965315076
E: info@ryan.com.om
W: www.ryan.com.om
3rd Floor, H. Al-Ain, Al-Musalla, Muscat

Title: 1st Floor
Power Layout
Page: EP - 02/02

The contents of these drawings remain as a property of Ryan Private Limited. Any use other than those expressly stated is a violation of this copyright.



GROUND FLOOR PLUMBING & DRAINAGE LAYOUT

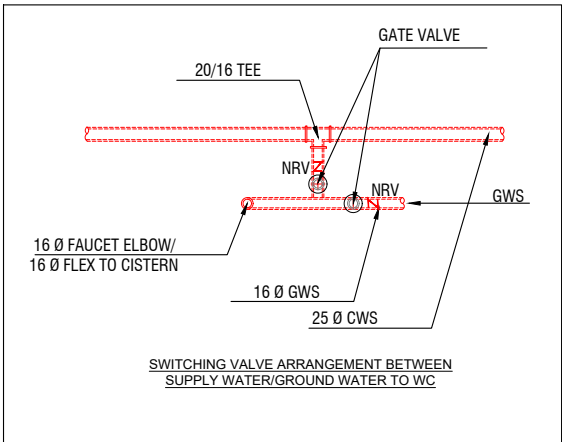
SCALE 1:100

LEGEND

- FC

160 COLD WATER SUPPLY FAUCET / WALL TAP/SINK
- GV

GATE VALVE
- RISE IN WALL
- DROP IN WALL
- 320 COLD WATER SUPPLY PIPES RUNNING UNDERGROUND
- 250 COLD WATER SUPPLY PIPES RUNNING IN WALLS
- 250 COLD WATER SUPPLY PIPES RUNNING UNDERGROUND
- 250 COLD WATER SUPPLY PIPES RUNNING ABOVE FALSE CEILING
- FLOOR DRAIN
- FLOOR GULLY
- 1100 SOIL PIPE (CPVC PIPE)
- 820 WASTE PIPE (CPVC PIPE)
- 400 WASTE PIPE (CPVC PIPE)
- 500 WASTE PIPE (CPVC PIPE)
- 820 MANHOLE VENT PIPE (CPVC PIPE)
- BOTTLE TRAP
- GROUND WATER SUPPLY



NOTE:

- ALL RAINWATER PIPES TO BE AT GROUND LEVEL DISCHARGED THROUGH A PERFORATED COWL OR TO A SOAK PIT
- ALL SOIL AND WASTE PIPES TO BE AT GROUND LEVEL, UNDER THE SLAB.
- ALL COLD WATER PIPES SHOULD BE CPVC

NOTE:

- THE WELL SHALL BE RELOCATED ACCORDING TO THE SALINITY OF THE GROUND WATER.
- BASED ON WELL LOCATION PUMP CAPACITY AND LOACTION TO BE DECIDED

Th.Omadhoo School Hall

Client: Ministry of Education

Project Number: R/2020/006

Date: March 2021

Architect: Maniyam Indira Shanil

Engineer: Maniyam Leeyan Jaleel

Drawn by: Maniyam Leeyan Jaleel

Services: Alubath Ahmed

Interior: -

Rev no

Date

1

1603101040

2

1603101076

3

1603101076

4

1603101076

5

1603101076

6

1603101076

7

1603101076

8

1603101076

9

1603101076

10

1603101076

11

1603101076

12

1603101076

13

1603101076

14

1603101076

15

1603101076

16

1603101076

17

1603101076

18

1603101076

19

1603101076

20

1603101076

21

1603101076

22

1603101076

23

1603101076

24

1603101076

25

1603101076

26

1603101076

27

1603101076

28

1603101076

29

1603101076

30

1603101076

31

1603101076

32

1603101076

33

1603101076

34

1603101076

35

1603101076

36

1603101076

37

1603101076

38

1603101076

39

1603101076

40

1603101076

41

1603101076

42

1603101076

43

1603101076

44

1603101076

45

1603101076

46

1603101076

47

1603101076

48

1603101076

49

1603101076

50

1603101076

51

1603101076

52

1603101076

53

1603101076

54

1603101076

55

1603101076

56

1603101076

57

1603101076

58

1603101076

59

1603101076

60

1603101076

61

1603101076

62

1603101076

63

1603101076

64

1603101076

65

1603101076

66

1603101076

67

1603101076

68

1603101076

69

1603101076

70

1603101076

71

1603101076

72

1603101076

73

1603101076

74

1603101076

75

1603101076

76

1603101076

77

1603101076

78

1603101076

79

1603101076

80

1603101076

81

1603101076

82

1603101076

83

1603101076

84

1603101076

85

1603101076

86

1603101076

87

1603101076

88

1603101076

89

1603101076

90

1603101076

91

1603101076

92

1603101076

93

1603101076

94

1603101076

95

1603101076

96

1603101076

97

1603101076

98

1603101076

99

1603101076

100

1603101076

1

1603101040

2

1603101076

3

1603101076

4

1603101076

5

1603101076

6

1603101076

7

1603101076

8

1603101076

9

1603101076

10

1603101076

11

1603101076

12

1603101076

13

1603101076

14

1603101076

15

1603101076

16

1603101076

17

1603101076

18

1603101076

19

1603101076

20

1603101076

21

1603101076

22

1603101076

23

1603101076

24

1603101076

25

1603101076

26

1603101076

27

1603101076

28

1603101076

29

1603101076

30

1603101076

31

1603101076

32

1603101076

33

1603101076

34

1603101076

35

1603101076

36

1603101076

37

1603101076

38

1603101076

39

1603101076

40

1603101076

41

1603101076

42

1603101076

43

1603101076

44

1603101076

45

1603101076

46

1603101076

47

1603101076

48

1603101076

49

1603101076

50

1603101076

51

1603101076

52

1603101076

53

1603101076

54

1603101076

55

1603101076

56

1603101076

57

1603101076

58

1603101076

59

1603101076

60

1603101076

61

1603101076

62

1603101076

63

1603101076

64

1603101076

65

1603101076

66

1603101076

67

1603101076

68

1603101076

69

1603101076

70

1603101076

71

1603101076

72

1603101076

73

1603101076

74

1603101076

75

1603101076

76

1603101076

77

1603101076

78

1603101076

79

1603101076

80

1603101076

81

1603101076

82

1603101076

83

1603101076

84

1603101076

85

1603101076

86

1603101076

87

1603101076

88

1603101076

89

1603101076

90

1603101076

91

1603101076

92

1603101076

93

1603101076

94

1603101076

95

1603101076

96

1603101076

97

1603101076

98

1603101076

99

1603101076

100

1603101076

1

1603101040

2

1603101076

3

1603101076

4

1603101076

5

1603101076

6

1603101076

7

1603101076

8

1603101076

9

1603101076

10

1603101076

11

1603101076

12

1603101076

13

1603101076

14

1603101076

15

1603101076

16

1603101076

17

1603101076

18

1603101076

19

1603101076

20

1603101076

21

1603101076

22

1603101076

23

1603101076

24

1603101076

25

1603101076

26

1603101076

27

1603101076

28

1603101076

29

1603101076

30

1603101076

31

1603101076

32

1603101076

33

1603101076

34

1603101076

35

1603101076

36

1603101076

37

1603101076

38

1603101076

39

1603101076

40

1603101076

41

1603101076

42

1603101076

43

1603101076

44

1603101076

45

1603101076

46

1603101076

47

1603101076

48

1603101076

49

1603101076

50

1603101076

51

1603101076

52

1603101076

53

1603101076

54

1603101076

55

1603101076

56

1603101076

57

1603101076

58

1603101076

59

1603101076

60

1603101076

61

1603101076

62

1603101076

63

1603101076

64

1603101076

65

1603101076

66

1603101076

67

1603101076

68

1603101076

69

1603101076

70

1603101076

71

1603101076

72

1603101076

73

1603101076

74

1603101076

75

1603101076

76

1603101076

77

1603101076

78

1603101076

79

1603101076

80

1603101076

81

1603101076

82

1603101076

83

1603101076

84

1603101076

85

1603101076

86

1603101076

87

1603101076

88

1603101076

89

1603101076

90

1603101076

91

1603101076

92

1603101076

93

1603101076

94

1603101076

95

1603101076

96

1603101076

97

1603101076

98

1603101076

99

1603101076

100

1603101076

1

1603101040

2

1603101076

3

1603101076

4

1603101076

5

1603101076

6

1603101076

7

1603101076

8

1603101076

9

1603101076

10

1603101076

11

1603101076

12

1603101076

13

1603101076

14

1603101076

15

1603101076

16

1603101076

17

1603101076

18

1603101076

19

1603101076

20

1603101076

21

1603101076

22

1603101076

23

1603101076

24

1603101076

25

1603101076

26

1603101076

27

1603101076

28

1603101076

29

1603101076

30

1603101076

31

1603101076

32

1603101076

33

1603101076

34

1603101076

35

1603101076

36

1603101076

37

1603101076

38

1603101076

39

1603101076

40

1603101076

41

1603101076

42

1603101076

43

1603101076

44

1603101076

45

1603101076

46

1603101076

47

1603101076

48

1603101076

49

1603101076

50

1603101076

51

1603101076

52

1603101076

53

1603101076

54

1603101076

55

1603101076

56

1603101076

57

1603101076

58

1603101076

59

1603101076

60

1603101076

61

1603101076

62

1603101076

63

1603101076

64

1603101076

65

1603101076

66

1603101076

67

1603101076

68

1603101076

69

1603101076

70

1603101076

71

1603101076

72

1603101076

73

1603101076

74

1603101076

75

1603101076

76

1603101076

77

1603101076

78

1603101076

79

1603101076

80

1603101076

81

1603101076

82

1603101076

83

1603101076

84

1603101076

85

1603101076

86

1603101076

87

1603101076

88

1603101076

89

1603101076

90

1603101076

91

1603101076

92

1603101076

93

1603101076

94

1603101076

95

1603101076

96

1603101076

97

1603101076

98

1603101076

99

1603101076

100

1603101076

1

1603101040

2

1603101076

3

1603101076

4

1603101076

5

1603101076

6

1603101076

7

1603101076

8

1603101076

9

1603101076

10

1603101076

11

1603101076

12

1603101076

13

1603101076

14

1603101076

15

1603101076

16

1603101076

17

1603101076

18

1603101076

19

1603101076

20

1603101076

21

1603101076

22

1603101076

23

1603101076

24

1603101076

25

1603101076

26

1603101076

27

1603101076

28

1603101076

29

1603101076

30

1603101076

31

1603101076

32

1603101076

33

1603101076

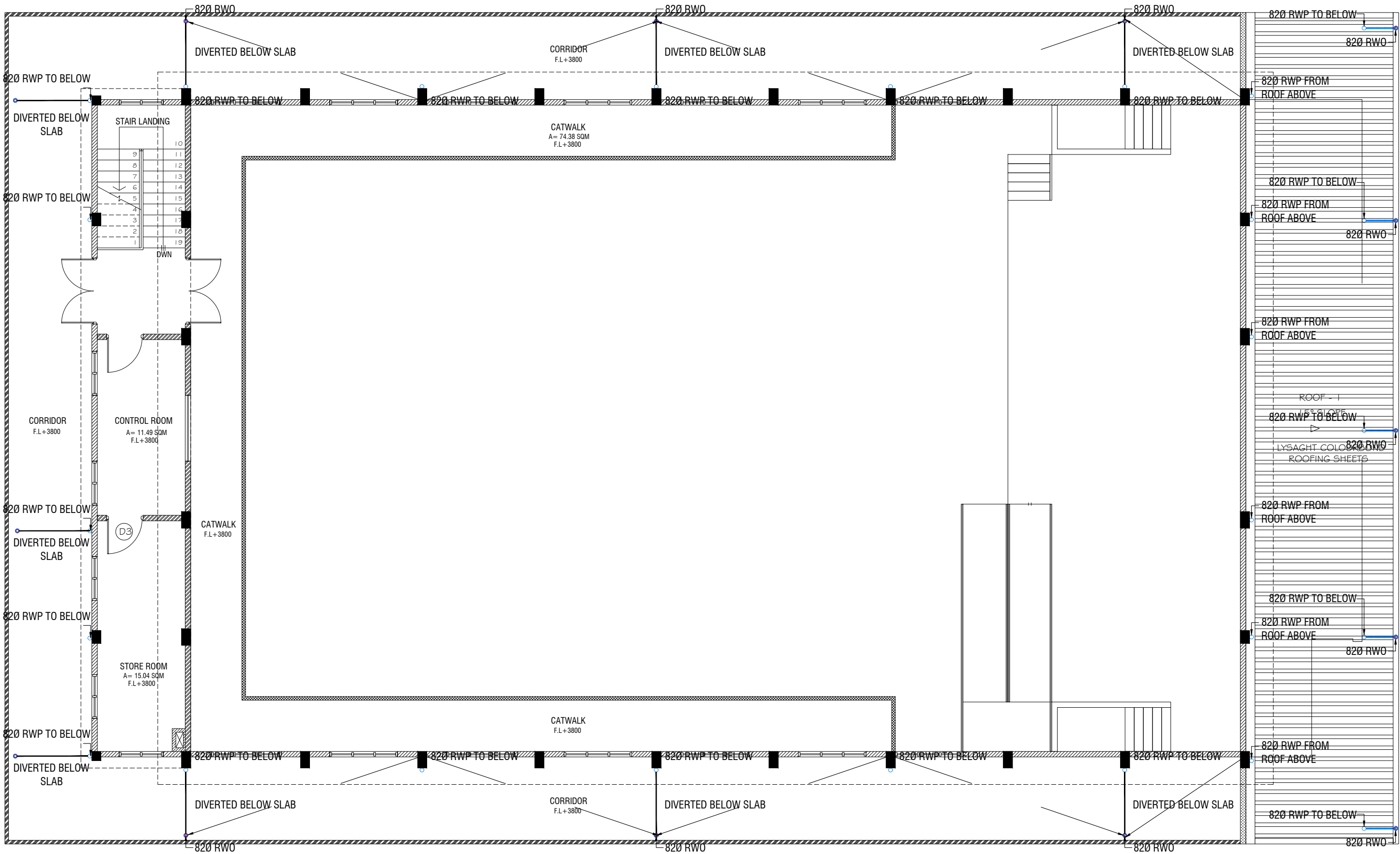
34

1603101076

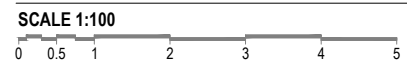
35

1603101076

36

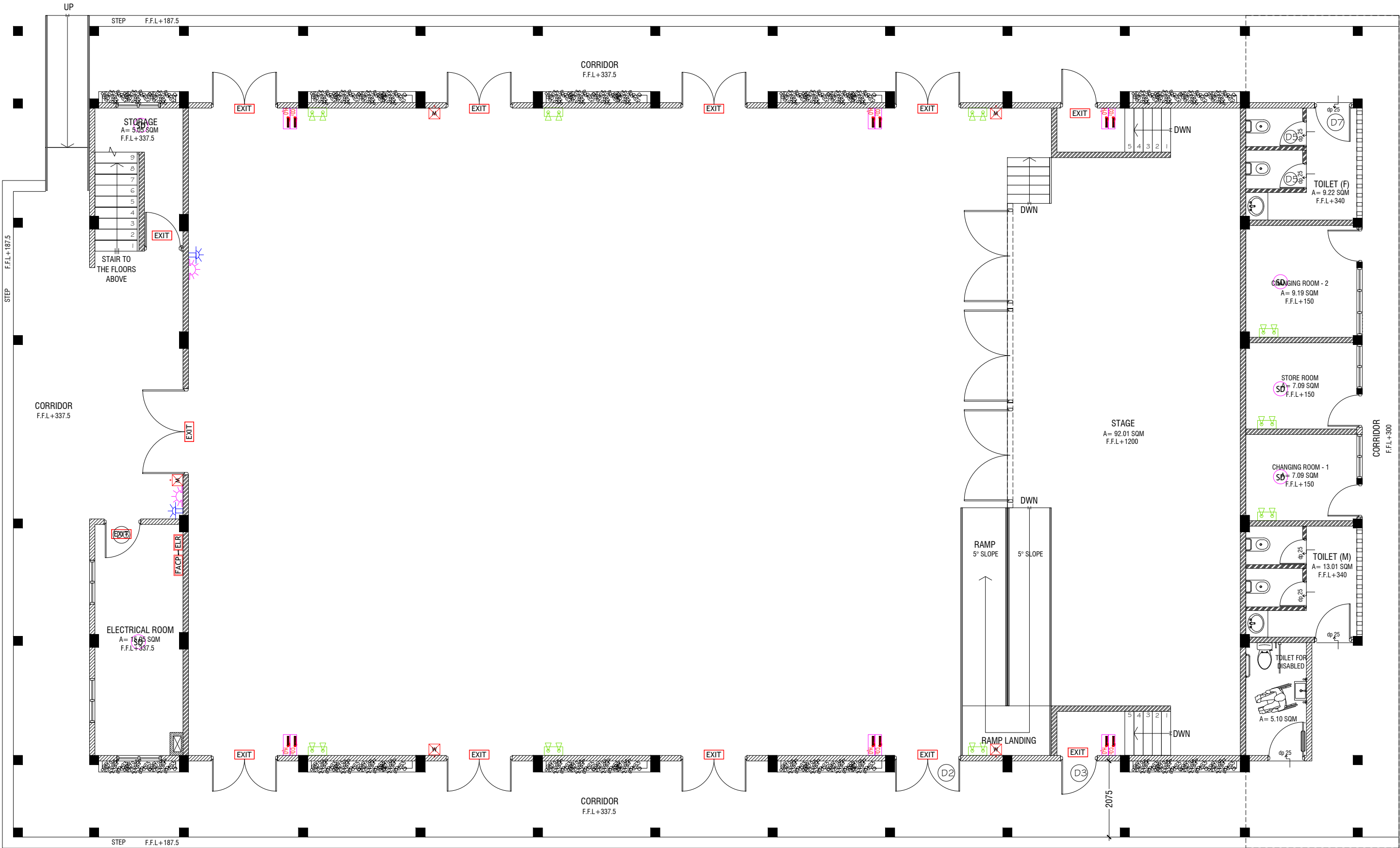


FIRST FLOOR DRAINAGE LAYOUT



- RWP 82/50 Ø RAINWATER PIPE
- RWO 82/50 Ø DRAIN OUTLET
- CD 25 Ø DRAIN PIPE
- MHVP 50 Ø MANHOLE VENT PIPE

NOTE:
- ALL RAINWATER PIPES TO BE AT GROUND LEVEL
DISCHARGED THROUGH A PERFORATED COWL OR TO A SOAK PIT



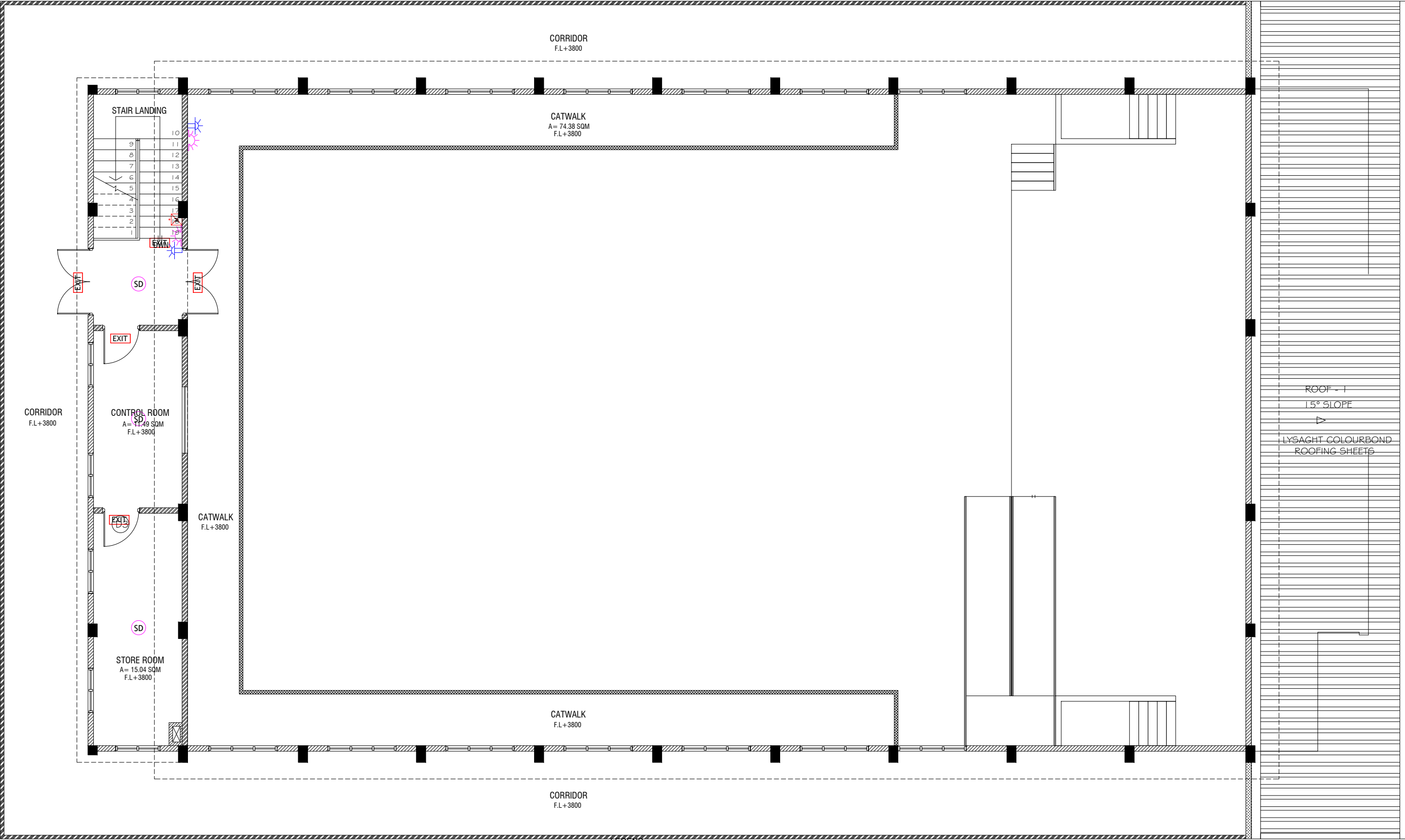
GROUND FLOOR FDP LAYOUT

SCALE 1:100



- LEGEND**
- SD SMOKE DETECTOR
 - HD HEAT DETECTOR
 - EXIT EXIT SIGN
 - EM EMERGENCY LIGHT
 - CO₂ EXTINGUISHER (LOAD: 2KG) IN POLYCARBONATE ENCLOSURE (TYP.)
 - WET CHEMICAL FIRE EXTINGUISHER (LOAD 7.2KG)
 - H₂O EXTINGUISHER (LOAD: 9L) IN POLYCARBONATE ENCLOSURE (TYP.)
 - ELR END OF LINE RESISTANCE
 - FACP FIRE ALARM CONTROL PANEL
 - MANUAL CALL POINT (RESETTABLE)
 - BEACON
 - SOUNDER/BELL (85 DB)

- ALL FIRE RATED DOOR SHOULD COME WITH PACKING (EXPANSION SEAL TRAP)
1. ALL PIPES SHOULD BE GALVANIZED SCHEDULE 40.
 2. ALL PIPE SHALL BE PAINTED IN RED AS PER REGULATION.
 3. ALL SUPPORT/BRACKET SHALL BE HOT DIPPED GALVANIZED TO 100MM.
 4. ALL FIRE EXTINGUISHER INSIDE CABINETS. (CABINET SHOULD BE PROVIDED)



FIRST FLOOR FDP LAYOUT

SCALE 1:100

- LEGEND
- SD SMOKE DETECTOR
 - HD HEAT DETECTOR
 - EXIT EXIT SIGN
 - EM EMERGENCY LIGHT
 - CO₂ EXTINGUISHER (LOAD: 2KG) IN POLYCARBONATE ENCLOSURE (TYP.)
 - WET CHEMICAL FIRE EXTINGUISHER (LOAD 7.2KG)
 - H₂O EXTINGUISHER (LOAD: 9L) IN POLYCARBONATE ENCLOSURE (TYP.)
 - ELR END OF LINE RESISTANCE
 - FACP FIRE ALARM CONTROL PANEL
 - MANUAL CALL POINT (RESETTABLE)
 - BEACON
 - SOUNDER/BELL (85 DB)

- ALL FIRE RATED DOOR SHOULD COME WITH PACKING (EXPANSION SEAL TRAP)
- 1. ALL PIPES SHOULD BE GALVANIZED SCHEDULE 40.
- 2. ALL PIPE SHALL BE PAINTED IN RED AS PER REGULATION.
- 3. ALL SUPPORT/BRACKET SHALL BE HOT DIPPED GALVANIZED TO 100MM
- 4. ALL FIRE EXTINGUISHER INSIDE CABINETS. (CABINET SHOULD BE PROVIDED)