



PROJECT: LOT 20518

Scale: N.T.S

Drawn by: Shadheen

Checked by: Zinaf

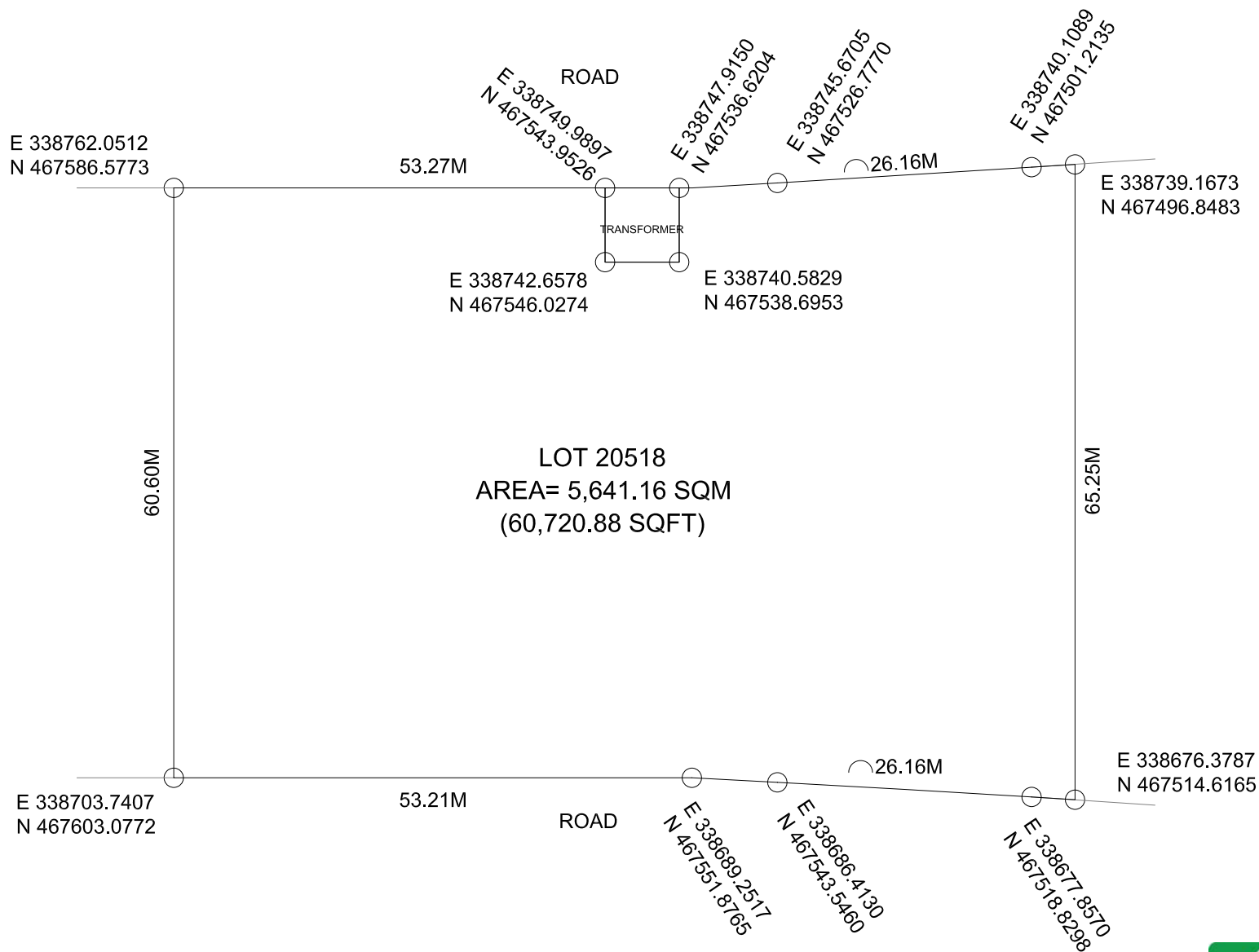
Date: 30th July 2019

Remarks:

DRAWING: LOCATION MAP



PLANNING AND DEVELOPMENT DEPARTMENT  
3RD FLOOR, HDC BUILDING HULHUMALE'  
REPUBLIC OF MALDIVES  
TEL. +(960)3353535, FAX +(960)3358892  
EMAIL : planning@hdc.com.mv



PROJECT: LOT 20518

Scale: N.T.S

Drawn by: Shadheen

Checked by: Zinaf

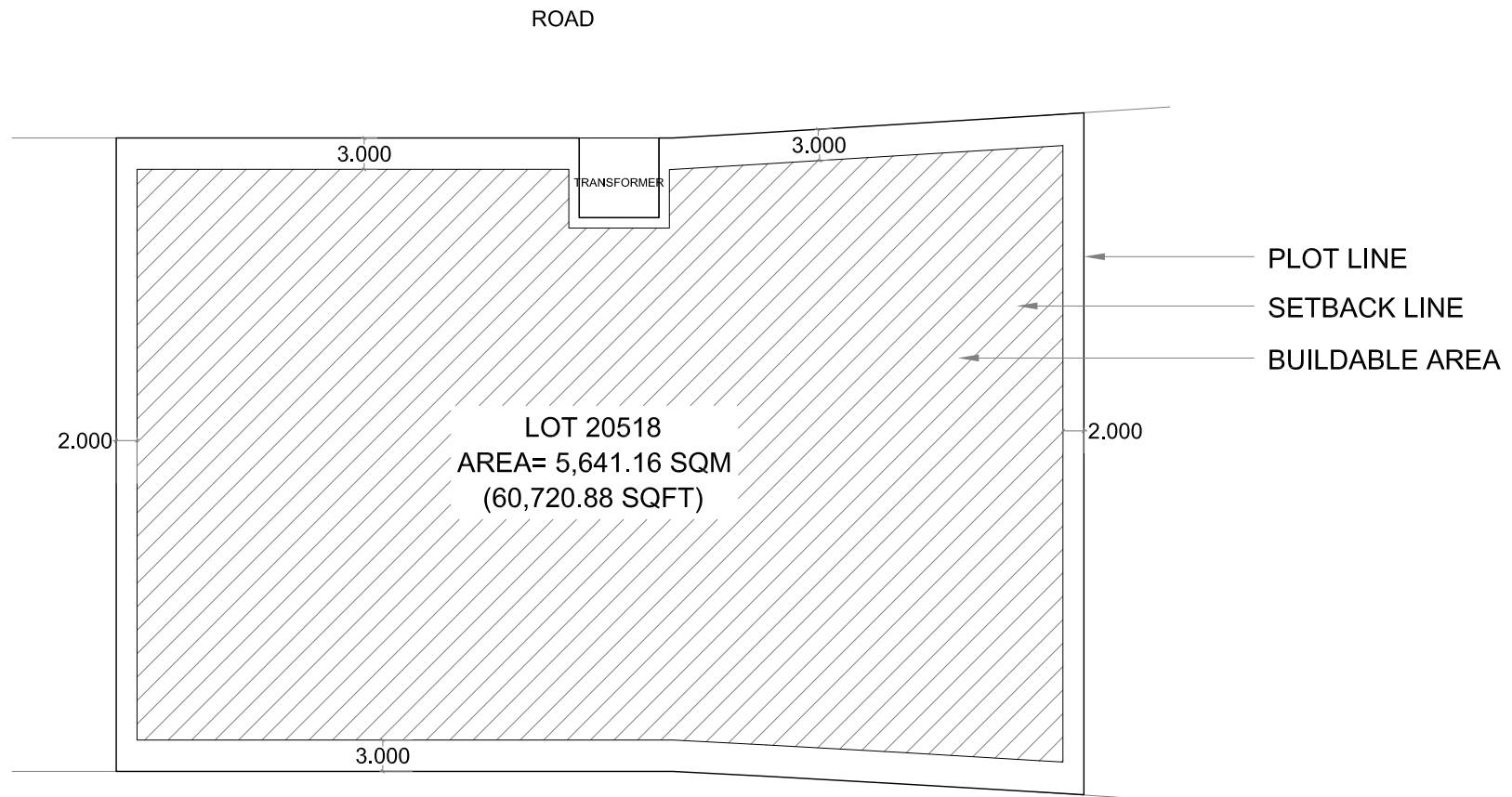
Date: 30th July 2019

Remarks:

DRAWING: PLOT MAP



HOUSING  
DEVELOPMENT  
CORPORATION  
PLANNING AND DEVELOPMENT DEPARTMENT  
3RD FLOOR, HDC BUILDING HULHUMALE'  
REPUBLIC OF MALDIVES  
TEL. +(960)3353535, FAX +(960)3358892  
EMAIL : planning@hdc.com.mv



Lot Number	Parcel Number	Description	Land Use	Plot Area	Foot Print	Gross Floor Area (G.F.A)	Plot Ratio (F.S.I)	Site Coverage	Max Height / Floors
20518	N5-32	School	Educational	5,641.16 SQM	3,384.70 SQM	18,277.36 SQM	3.2	60%	6 Floors / 25.5m
				60,720.88 SQFT	36,432.53 SQFT	196,735.66 SQFT			21m bldg+4m Lift Machine Room