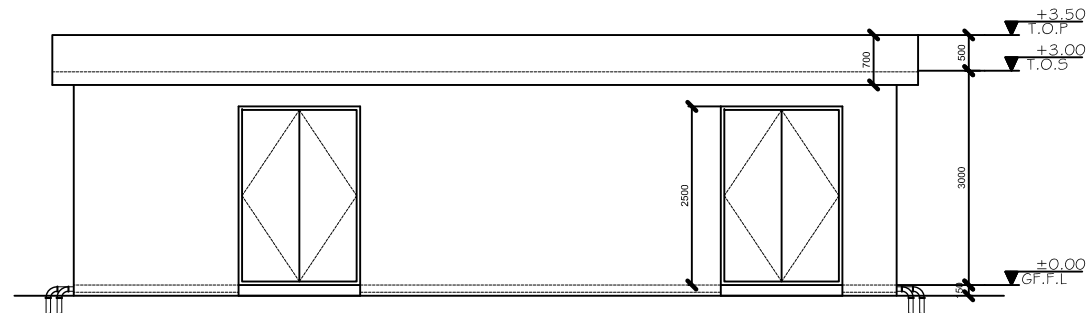


RO PLANT BUILDING
SCALE 1:100

RO PLANT SCHEDULE FOR xxxxxxxx ISLAND

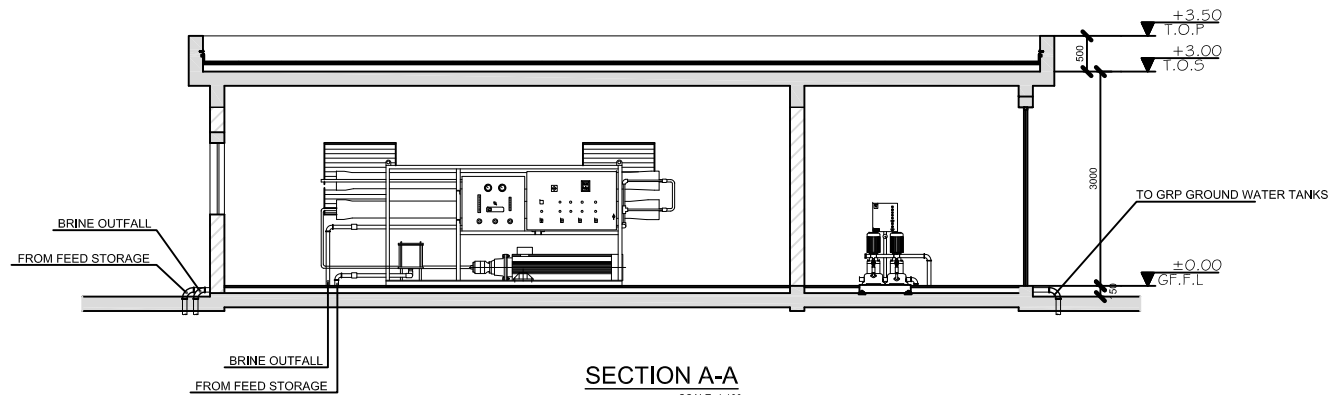
| NO. | PUMP CAPACITY | MOTOR | POWER SUPPLY | REMARKS |
|-----|-------------------------|------------------|--------------|---|
| 01 | 25.0M ³ /HRS | 35 KW(46.90 BHP) | 400-415/3/50 | TWO NOS OF RO PLANT WORKING ACCORDING TO FLOAT SENSOR |



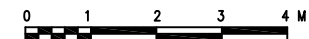
VIEW-1
SCALE 1:100

DOOR & LOUVER SCHEDULE

| D1 | WIDTH | HEIGHT | DESCRIPTION | D2 | WIDTH | HEIGHT | DESCRIPTION | W1 | WIDTH | HEIGHT | DESCRIPTION |
|----|-------|--------|-------------------------|----|-------|--------|-------------------------|----|-------|--------|--------------------------|
| | 2000 | 2500 | STEEL DOOR WITH LOUVERS | | 800 | 2000 | STEEL DOOR WITH LOUVERS | | 1000 | 1000 | STEEL FRAME WITH LOUVERS |



SECTION A-A
SCALE 1:100



1. ALL DIMENSION ARE IN MILLIMETER (MM),UNLESS OTHERWISE NOTED
2. ALL LEVELS SHOWN ARE IN METERS.
3. THIS DRAWING TO BE READ IN CONJUNCTION WITH ALL OTHER RELEVANT DRAWINGS,GENERAL NOTES AND SPECIFICATIONS.

REFERENCE DRAWINGS

| SL.No | DRAWING No. | DESCRIPTION |
|-------|-------------|-------------|
| | | |
| | | |
| | | |
| | | |

| REV. | DATE | DESCRIPTION | DRAWN | CHKD. | APPRD. |
|------|----------|-------------------|-------|-------|--------|
| 0 | 08.02.10 | ISSUED FOR TENDER | JP | AT | MA |

REVISION

CLIENT
MINISTRY OF ENVIRONMENT & ENERGY
REPUBLIC OF MALDIVES

CONSULTANT:
Al-Habshi Consultants Office
Tel: 2430103 / 2433131 - Fax: 2431136
P.O.Box 27154 Safat 13132 - Kuwait

PROJECT:
Provision of Water Supply Facilities in 04 islands and
Sewerage Facilities in 05 islands -
N.Velidhoo Island - Republic of Maldives

DRAWING TITLE:
REVERSE OSMOSIS UNIT DETAILS

| | | | | | |
|-------------|-----------|-------------|----------|-------|----------|
| DESIGNED | DRAWN | CHECKED | APPROVED | SCALE | DATE |
| SK | JP | SS | MA | 1:50 | 15.09.15 |
| PROJECT No. | SHEET No. | DRAWING No. | | | |
| K-619 | 1 OF 1 | NV-WS-123 | | | |
| REV. No. | 0 | | | | |