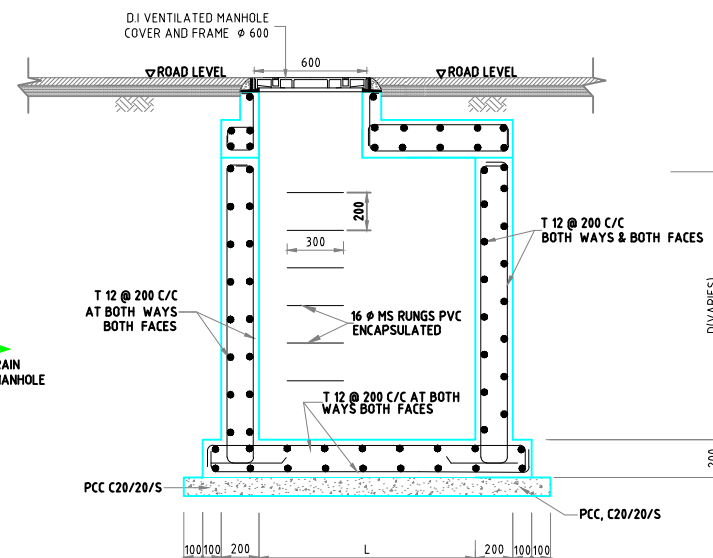
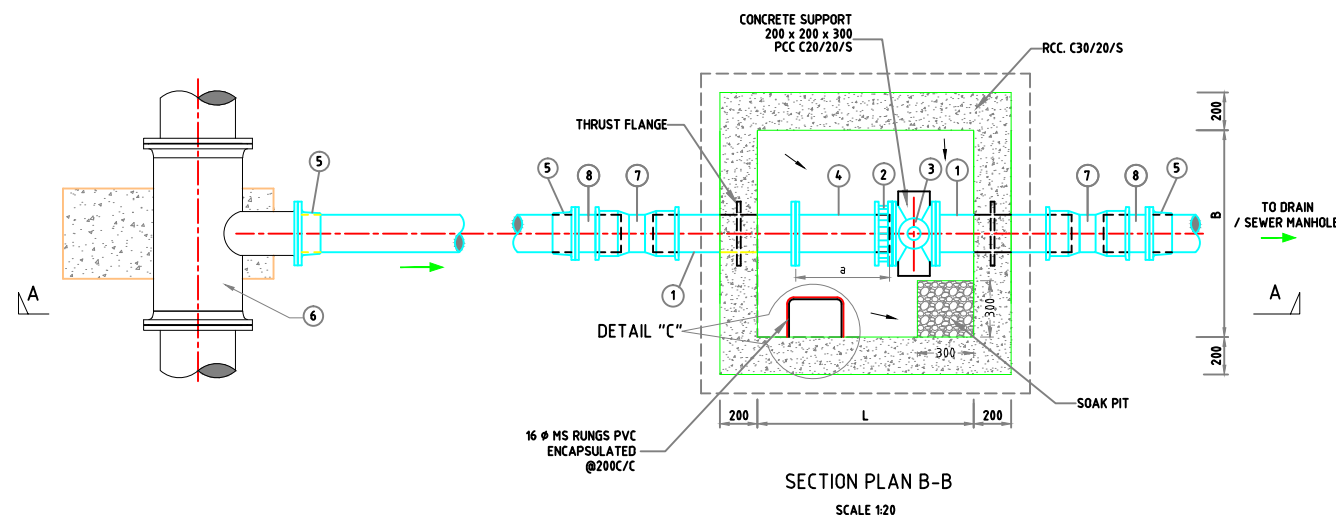


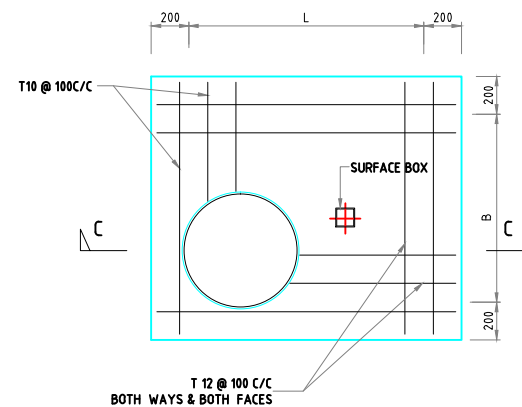
SECTION A-A
SCALE 1:20



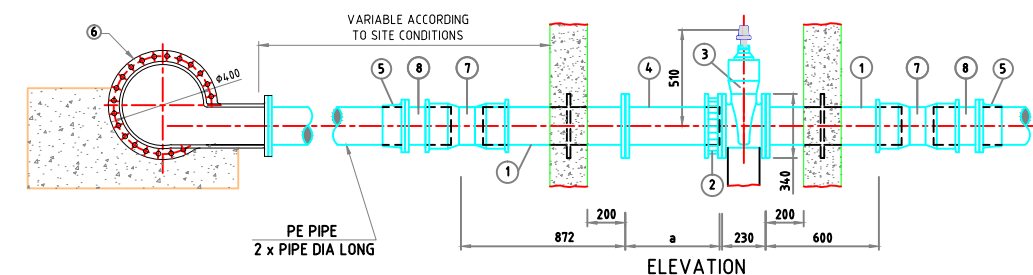
REINFORCEMENT DETAILS AT SECTION C-C
SCALE 1:20



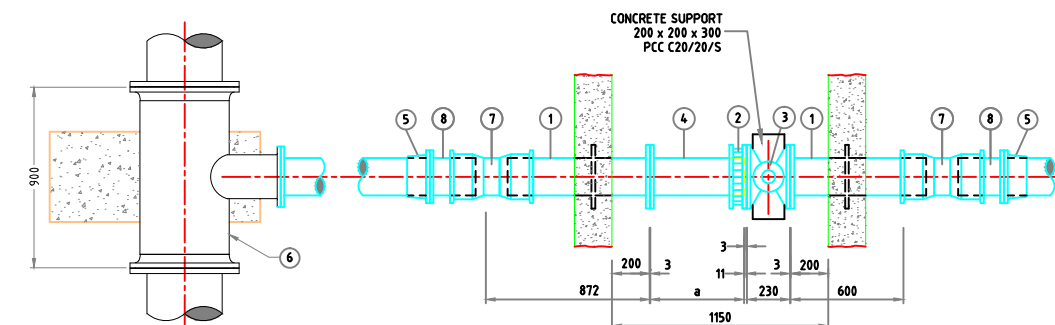
SECTION PLAN B-B
SCALE 1:20



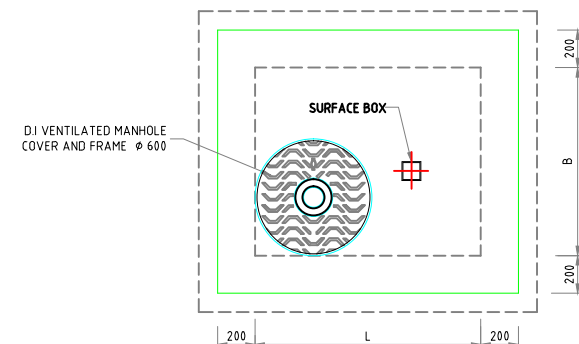
REINFORCEMENT DETAILS OF COVER SLAB
SCALE 1:20



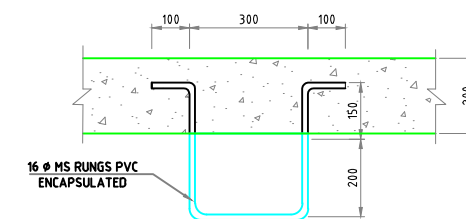
ELEVATION



PLAN & ELEVATION OF VALVE & FITTINGS
SCALE 1:20



ROOF PLAN
SCALE 1:20



DETAIL - C
MS RUNGS
SCALE 1:10

CLIENT MINISTRY OF ENVIRONMENT AND ENERGY MALE REPUBLIC OF MALDIVES			
PROJECT CONSULTANCY SERVICES FOR SURVEY, DESIGN OF WATER SUPPLY FACILITIES IN THE ISLAND HDH. NOLHIVARANFARU, MALDIVES			
TITLE TYPICAL DRAWING OF SCOUR VALVE CHAMBER			
STC SHAH TECHNICAL CONSULTANTS PVT. LTD., INDIA In Association With djm DEVELOPMENT TECHNOLOGIES MALDIVES, MALDIVES			
APPROVED	CHECKED	DESIGNED	DRAWN
SSS	SSS	RKC	SSN
SCALE	DATE	DRAWING No.	REVISION
AS SHOWN	APRIL 2017	HDh.Nolhivaranfaru/WS/10	0

NOTES:

- ALL DIMENSIONS ARE IN MM
- FOR LOCATION AND DEPTHS OF GATE VALVE CHAMBER REFER TO DRAWINGS OF PIPELINE PLANS AND PROFILES.
- THE SPECIALS AND PIPE FITTINGS SHALL BE SELECTED TO SUIT THE SUPPLY PIPE LINE
- ALL THE VALVES, SPECIALS AND PIPES INSIDE THE CHAMBER SHOULD BE OF DUCTILE IRON
- GATE VALVE SHALL COMPLY WITH BS 5150
- DI PIPE & FITTING SHALL COMPLY WITH BS 4772
- BUILDING MATERIALS:-
DESCRIPTION OF BUILDING MATERIALS IS AS FOLLOWS

COMPRESSIVE STRENGTH OF CONCRETE	C 30 / 20 / S
SULPHATE RESISTANT CEMENT	
MAXIMUM SIZE OF AGGREGATE	

- CONCRETE:
A. MIXES SHALL COMPLY WITH BS 8110
B. MINIMUM 28 DAY CHARACTERISTIC STRENGTH IN ACCORDANCE WITH BS 8110
- COVER TO REINFORCEMENT TO BE 50MM.
- THE STEEL USED SHALL BE OF FY 350 GRADE.
- THE TANKING SHALL BE WITH TWO LAYERS OF BITUMINOUS PAINT FOR EXTERNAL SURFACES OF VALVE CHAMBER
- GATE VALVE CHAMBER TO BE PROVIDED FOR PIPE DIA 200 TO 300 MM
- MH COVER SHOULD COMPLY TO BS EN 124 CLASS D400

ABBREVIATIONS

- PIL - PIPE INVERT LEVEL.
MS - MILD STEEL.
DI - DUCTILE IRON.
PE - POLY ETHYLENE
RCC - REINFORCED CEMENT CONCRETE
PCC - PLAIN CEMENT CONCRETE

No.	DATE	DESCRIPTION	DRG. No.	DESCRIPTION
REVISION		REFERENCE DRAWINGS		